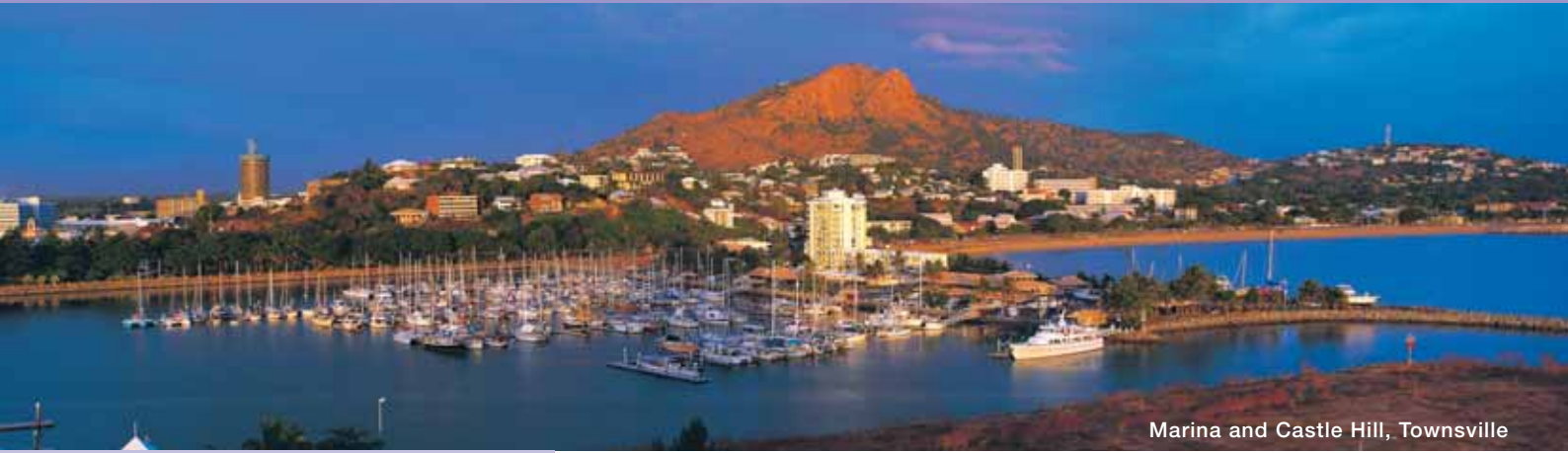


# Townsville and Magnetic Island



Marina and Castle Hill, Townsville

## Must See & Do

- Visit Townsville Strand
- Take a day tour to the Great Barrier Reef
- See Australian wildlife at Billabong Sanctuary
- Visit Reef HQ, the world's largest living reef aquarium
- Head up Castle Hill for a 360° view
- Hire a mini moke and explore Magnetic Island
- Snorkel Magnetic Island's fringing reef

Townsville and Magnetic Island offer the best of all worlds, combining the lure of the tropics with the attractions of a city. Surrounded by a rich hinterland of tropical rainforests and waterfalls, Townsville is also gateway to historic gold mining towns and the outback, islands and the Great Barrier Reef.

Discover the spectacular Strand beachfront promenade, the world's largest living coral reef aquarium, the native wildlife Billabong Sanctuary, art galleries, museums, parks and restaurants. Townsville features three main restaurant precincts – Flinders Street East, the Strand and Palmer Street, where fresh seafood and North Queensland steaks are a must.

Beautiful Magnetic Island lies just 20 minutes across the bay from Townsville. The contrasting landscape of this World Heritage Listed island makes it truly distinctive. Discover the rocky headlands, bays and beaches in a Mini Moke, snorkel the fringing reef or explore the endless walking tracks through the national parks.

## Transfer to Magnetic Island



Sunferries is your quickest link to Magnetic Island, providing 17 scheduled services daily on a high-speed catamaran.

Scheduled transfers depart from the Breakwater Terminal, Townsville and arrive at Nelly Bay, Magnetic Island. Travel time takes less than 20 minutes.

All vessels are equipped with a licensed bar for your convenience.

Price per person from Breakwater Terminal (return).

<b>PRICE:</b>	
<b>Adult</b>	\$28
<b>Child</b> 5-15 years	\$14
<b>Concession</b>	\$14
<b>Family</b> 2 adults and up to 3 children	\$60

Lower prices apply 1 Apr – 31 Aug 08. Ask your travel agent for details.

SUNFERRIES

SUNTSV

## Sunsea Reef Experience



Snorkel through the crystal clear waters of the Great Barrier Reef and discover the unbelievable colours of tropical fish and coral, dive and get even closer.

### TOUR INCLUDES:

- Full day cruise to Kelso Reef
- Tropical buffet lunch
- Use of snorkelling equipment
- Morning and afternoon tea
- Presentation by marine biologist
- Glass bottom boat tour
- Optional extras – introductory and certified scuba dive, guided snorkelling tour (extra charge)

**Operates:** Fri – Tue from Breakwater Terminal, Townsville and Nelly Bay Jetty, Magnetic Island

**Departs:** Townsville 8:30am, Magnetic Island 9am

**Returns:** Magnetic Island 5pm, Townsville 5:30pm

<b>PRICE:</b>	
<b>Adult</b>	\$144
<b>Child</b> 5-15 years	\$89
<b>Family</b> 2 adults and 2 children	\$371
Environmental Management Charge and Administration Fee payable direct.	

SUNFERRIES

SUNTSV

## Wildlife and Reef Encounter



Encounter the world's largest living coral reef aquarium and Australia's best interactive wildlife park on this great value two tour pass.

### BILLABONG SANCTUARY

See Australian native animals displayed over 25 acres in their natural habitat of eucalypt, rainforest and wetlands. Pat koalas and wombats or hold a python or a crocodile. Enjoy 17 interactive wildlife talks with qualified rangers including crocodile feeding daily.

### REEF HQ

Come face to face with the wonders of the Great Barrier Reef at the world's largest living coral reef aquarium and view thousands of coral, fish and marine creatures. With lots of amazing exhibits to explore, it's the ultimate reef experience up close.

**Open:** Billabong Sanctuary: 8am – 5pm daily except Christmas Day

Reef HQ: 9:30am – 5pm daily except Christmas Day

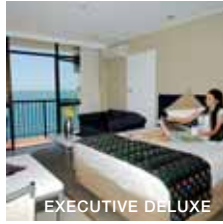


<b>PRICE:</b>	
<b>Adult</b>	\$50
<b>Child</b> 5-16 years	\$28
<b>Family</b> 2 adults and up to 3 children	\$142

BILLABONG SANCTUARY

BILTSV

## Aquarius on the Beach ★★★☆



Situated on The Strand with panoramic ocean views from all rooms. The perfect location for your next holiday.

**Beach 20m**  
**City centre 1.5km**  
**Map 6 Page 102 Ref. 2**

75 The Strand, Townsville

### PROPERTY FEATURES:

- Pool
- Lift
- Internet café
- Laundry/dry cleaning service
- Parking

### ACCOMMODATION FEATURES:

- Air-conditioning
- Cable TV
- Balcony
- Ironing facilities
- Limited cooking facilities with microwave
- CD player (Executive Deluxe only)

Room serviced daily



**From \$170** PER ROOM PER NIGHT

ROOM TYPE	ADULTS	1 NT	3 NTS	5 NTS
1 Apr 08 – 31 Mar 09				
Studio	1 to 3	170	510	850
Horizon View	1 to 3	190	570	950
Executive Deluxe	1 to 3	230	690	1150
Studio Interconnecting	1 to 5	260	780	1300

**Children** 0 to 2 years – cot free of charge.  
3 to 14 years – adult prices apply.

**Max capacity** Studio/Horizon View/Executive Deluxe – 3,  
Studio Interconnecting – 5.

**AQTSV**

## Hotel Ibis Townsville ★★★☆



This modern contemporary hotel is close to Flinders Mall and conveniently located in the heart of the city's dining precinct.

**Beach 2km**  
**City centre 700m**  
**Map 6 Page 102 Ref. 5**

12-14 Palmer Street, Townsville

### PROPERTY FEATURES:

- 24 hour reception
- Internet café
- Restaurant
- Bar
- Lift
- Laundry/dry cleaning service
- Parking

### ACCOMMODATION FEATURES:

- Air-conditioning
- Tea/coffee making facilities
- Ironing facilities
- Internet access (broadband)

Room serviced daily



**From \$131** PER ROOM PER NIGHT

ROOM TYPE	ADULTS	1 NT	3 NTS	5 NTS
1 Apr – 11 Jul, 13 Jul – 25 Oct, 27 Oct – 19 Dec 08, 2 Feb – 31 Mar 09				
MONDAY TO THURSDAY				
Standard Queen/Twin	1 to 2	140	420	700
Standard King	1 to 2	151	453	755
FRIDAY TO SUNDAY				
Standard Queen/Twin	1 to 2	131	393	673
Standard King	1 to 2	140	420	722
20 Dec 08 – 1 Feb 09				
Standard Queen/Twin	1 to 2	131	393	655
Standard King	1 to 2	140	420	700

Other prices apply 12 Jul and 26 Oct 08. Ask your travel agent for details.

**Children** 0 to 11 years – free when sharing with an adult and using existing bedding.

**Max capacity** 2.

**IBITSV**

## City Oasis Inn ★★★★★



Located in the city centre with a large range of room types. Your very own oasis in the city.

**Beach 1km**  
**City centre 300m**  
**Map 6 Page 102 Ref. 3**

143 Wills Street, Townsville

### PROPERTY FEATURES:

- Barbecue area
- Pool
- Spas (2 – 1 heated)
- Children's playground
- Café/bar
- Room service (limited)
- Laundry/dry cleaning service
- Parking

### ACCOMMODATION FEATURES:

- Air-conditioning
- Fan
- Cable TV
- Mini bar (Executive rooms only)
- Limited cooking facilities with microwave (Kitchenettes only)

Room serviced daily

Standard ★★★☆

All other rooms ★★★★★

**From \$114** PER ROOM PER NIGHT

ROOM TYPE	ADULTS	1 NT	2 NTS	5 NTS
1 Apr – 31 May, 1 Oct 08 – 31 Mar 09				
Standard	1 to 2	140	238	570
Executive	1 to 2	175	300	720
Executive Kitchenette	1 to 2	180	308	745
Loft	1 to 4	220	400	1000
2 Brm Executive Kitchenette	1 to 4	345	616	1540
1 Jun – 30 Sep 08				
Standard	1 to 2	140	248	595
Executive	1 to 2	175	308	745
Executive Kitchenette	1 to 2	180	318	770
Loft	1 to 4	220	400	1000
2 Brm Executive Kitchenette	1 to 4	345	616	1540

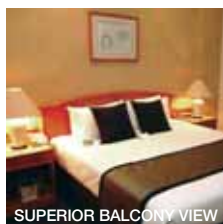
Standard Family and Standard Family Kitchen prices also available. Ask your travel agent for details.

**Children** 0 to 2 years – cot/bed charge payable direct.  
3 to 14 years – adult prices apply.

**Max capacity** Standard/Executive/Executive Kitchenette – 3,  
Loft/2 Bedroom Executive Kitchenette – 4.

**CITTSV**

## Holiday Inn Townsville ★★★★★



Situated in the heart of the CBD, offering stunning views of Magnetic Island, the city and Coral Sea. Close to all attractions.

**Beach 1.5km**  
**City centre 20m**  
**Map 6 Page 102 Ref. 4**

Flinders Mall, Townsville

### PROPERTY FEATURES:

- Pool (rooftop)
- Restaurant
- Lift
- Laundry/dry cleaning service
- 24 hour reception
- Business centre
- Room service (24 hour)
- Bar
- Parking (undercover – extra charge)

### ACCOMMODATION FEATURES:

- Air-conditioning
- Hair dryer
- Tea/coffee making facilities
- Cable TV
- Ironing facilities
- Safe
- Internet access (broadband)

Room serviced daily

**From \$147** PER ROOM PER NIGHT

ROOM TYPE	ADULTS	1 NT	3 NTS	5 NTS
1 Apr – 31 Oct 08, 1 Feb – 31 Mar 09				
Standard	1 to 2	160	480	800
Superior Balcony View	1 to 2	180	540	900
1 Bedroom Suite	1 to 2	200	600	1000
1 Nov 08 – 31 Jan 09				
Standard	1 to 2	147	441	735
Superior Balcony View	1 to 2	167	501	835
1 Bedroom Suite	1 to 2	187	561	935

**Children** 0 to 19 years – free when sharing with an adult and using existing bedding.

**Max capacity** Standard/Superior Balcony View – 3, 1 Bedroom Suite – 3 adults or 2 adults/2 children.

**HOLTSV**

### BONUS OFFER

- Stay 3 nights and the 4th night is FREE, valid 1 Nov – 30 Dec 08, 1 – 31 Jan 09.

## Mercure Inn, Townsville ★★★★★



This resort style hotel is set amongst lush tropical gardens with relaxing views over the pool, gardens or lake.

Beach 5km  
City centre 4km  
Map 6 Page 102

Woolcock Street, Townsville

### PROPERTY FEATURES:

- Restaurant
- Bar
- 24 hour reception
- Pool ■ Spa
- Tennis court
- Parking

### ACCOMMODATION FEATURES:

- Air-conditioning
- Tea/coffee making facilities
- Ironing facilities
- Cable TV
- In-room movies (pay to view)
- Internet access

Room serviced daily



From \$149 PER ROOM PER NIGHT

ROOM TYPE	ADULTS	1 NT	3 NTS	5 NTS
1 Apr – 23 Oct, 27 Oct 08 – 31 Mar 09				
Standard	1 to 2	149	447	745
Superior Resort	1 to 2	164	492	820
Suite	1 to 2	169	507	845
Deluxe	1 to 2	179	537	895
24 Oct – 26 Oct 08				
Standard	1 to 2	199	597	995
Superior Resort	1 to 2	214	642	1070
Suite	1 to 2	219	657	1095
Deluxe	1 to 2	229	687	1145

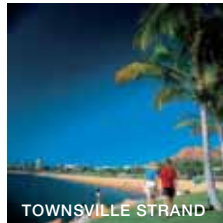
**Children** 0 to 15 years – up to two children stay free when sharing with adults and using existing bedding.

**Max capacity** Standard/Deluxe – 2, Superior Resort – 2 adults/1 child, Suite – 4. **MERTSV**

### BONUS OFFER

- Up to two children 0 to 15 years eat breakfast FREE when dining with paying adults.

## Park Regis Anchorage ★★★★★



Park Regis Anchorage is only a short stroll away from the Palmer Street dining precinct.

Beach 2km  
City centre 700m  
Map 6 Page 102 Ref. 7

51 Palmer Street, Townsville

### PROPERTY FEATURES:

- Pools (2)
- Restaurant
- Barbecue area
- Parking

### ACCOMMODATION FEATURES:

- Air-conditioning
- Kitchen (1 and 2 Bedrooms only)
- Tea/coffee making facilities

Room serviced daily



From \$120 PER ROOM PER NIGHT

ROOM TYPE	ADULTS	1 NT	3 NTS	7 NTS
1 Apr – 24 Jul, 27 Jul – 11 Sep, 14 Sep – 31 Oct 08, 1 – 31 Mar 09				
Studio	1 to 2	156	417	903
1 Bedroom	1 to 2	206	570	1239
2 Bedroom 1 Bathroom	1 to 4	223	618	1358
2 Bedroom 2 Bathroom	1 to 4	244	687	1512
1 Nov – 23 Dec 08, 6 Jan – 28 Feb 09				
Studio	1 to 2	147	393	840
1 Bedroom	1 to 2	194	540	1183
2 Bedroom 1 Bathroom	1 to 4	210	582	1288
2 Bedroom 2 Bathroom	1 to 4	231	648	1442

Other prices apply 25 – 26 Jul, 12 – 13 Sep, 24 Dec 08 – 5 Jan 09. Ask your travel agent for details.

**Children** 0 to 12 years – free when sharing with an adult and using existing bedding.

**Max capacity** Studio/1 Bedroom – 3, 2 Bedroom 1 Bathroom – 4, 2 Bedroom 2 Bathroom – 5. **PARTSV**

## Rydges Southbank Townsville ★★★★★



Situated in the restaurant strip of Townsville, this quality hotel is a few minutes walk to the city centre.

Beach 2km  
City centre 700m  
Map 6 Page 102 Ref. 6

17-29 Palmer Street, Townsville

### PROPERTY FEATURES:

- Restaurant ■ Bar ■ Pool
- Spa ■ Guest laundry ■ Lift
- 24 hour reception
- Room service (limited)
- Parking (undercover security)

### ACCOMMODATION FEATURES:

- Air-conditioning
- Hair dryer ■ Mini bar
- In-room movies (free)
- Tea/coffee making facilities
- Cable TV
- Internet access
- Ironing facilities

Room serviced daily



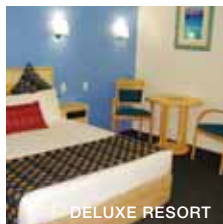
From \$171 PER ROOM PER NIGHT

ROOM TYPE	ADULTS	1 NT	3 NTS	5 NTS
1 Apr 08 – 31 Mar 09				
Standard Queen	1 to 2	171	513	855
Standard Twin	1 to 2	171	513	855
Standard Double/Double	1 to 2	171	513	855

**Children** 0 to 12 years – free when sharing with an adult and using existing bedding.

**Max capacity** Standard Queen – 2, Standard Twin – 3, Standard Double/Double – 4. **RYDTSV**

## Seagulls Resort on the Seafont ★★★★★



Relax in Townsville's tropical oasis by the ocean. The resort is located close to city and airport.

Beach 500m  
City centre 2.5km  
Map 6 Page 102 Ref. 1

74 Esplanade, Townsville

### PROPERTY FEATURES:

- Pools (2)
- Restaurant
- Bar ■ Barbecue area
- Laundry/dry cleaning service
- Courtesy shuttle to city
- Tennis (half court)
- Parking

### ACCOMMODATION FEATURES:

- Air-conditioning
- Cable TV ■ Hair dryer
- Tea/coffee making facilities
- Ironing facilities
- Internet access

Room serviced daily



From \$121 PER ROOM PER NIGHT

ROOM TYPE	ADULTS	1 NT	3 NTS	5 NTS
1 Apr 08 – 31 Mar 09				
Resort	1 to 2	121	363	605
Deluxe Resort	1 to 2	139	417	695
Studio Kitchenette	1 to 2	147	441	735
Superior Business	1 to 2	152	456	760
Family Room	1 to 2	152	456	760
2 Bedroom	1 to 2	168	504	840

Executive Kitchenette prices also available. Ask your travel agent for details.

**Children** 0 to 2 years – cot/bed charge payable direct. 3 to 14 years – adult prices apply.

**Max capacity** Resort/Deluxe Resort/Studio Kitchenette – 3 adults or 2 adults/2 children, Superior Business – 3, Family Room/2 Bedroom – 5. **SEATSV**

### BONUS OFFER

- Stay 3 nights or more and receive a bottle of sparkling wine per booking.

# Townsville and Magnetic Island

## Jupiters Townsville ★★★★★



Superior accommodation offering a variety of leisure and entertainment activities, including all the fun and excitement of the casino.

Beach 800m  
City centre 1.5km  
Map 6 Page 102 Ref. 8

Sir Leslie Thies Drive, Townsville

### PROPERTY FEATURES:

- Casino ■ Tennis court
- Restaurants (3) ■ Bars (5)
- Pool ■ Spa ■ Sauna
- Laundry/dry cleaning service
- Lift ■ Gymnasium
- Room service (24 hour)
- Massage facilities
- Parking (valet)

### ACCOMMODATION FEATURES:

- Air-conditioning
- Mini bar
- In-room movies (pay to view)
- Tea/coffee making facilities

Room serviced daily



From \$187 PER ROOM PER NIGHT

ROOM TYPE	ADULTS	1 NT	3 NTS	5 NTS
1 Apr 08 – 31 Mar 09				
Superior	1 to 2	187	561	935
Executive	1 to 2	320	960	1600

**Children** 0 to 15 years – free when sharing with an adult and using existing bedding.

**Max capacity** Superior – 3, Executive – 2.

JUPTSV

### BONUS OFFER

- Stay 3 nights and receive a complimentary bottle of Australian sparkling wine, per room.

## Island Leisure Resort ★★★★★



A fabulous pool, great facilities and self-contained units in a tropical setting on Magnetic Island.

Beach 50m  
Shop 70m  
Map 7 Page 102 Ref. 1

4 Kelly Street, Nelly Bay, Magnetic Island

### PROPERTY FEATURES:

- Pool (lagoon style) ■ Spa
- Barbecue area ■ Guest laundry
- Internet café
- Tennis court (floodlit)
- Gymnasium ■ Games room
- Parking

### ACCOMMODATION FEATURES:

- Air-conditioning ■ Fan
- Limited cooking facilities with microwave
- Patio
- Cable TV

Unit serviced weekly



From \$145 PER ROOM PER NIGHT

ROOM TYPE	ADULTS	2 NTS	5 NTS	7 NTS
1 Apr – 19 Dec 08, 6 Jan – 31 Mar 09				
Bure	1 to 4	290	725	870*
20 Dec 08 – 5 Jan 09				
Bure	1 to 4	320	800	960*

**Children** 0 to 15 years – free when sharing with an adult and using existing bedding. Cot free of charge.

**Max capacity** 4 adults or 2 adults/4 children.

ISLMAI

### BONUS OFFER

- \*Price includes one FREE night.

## Magnetic International Resort ★★★★★



A resort set with tropical surrounds nestled in the foothills of the island's national park.

Beach 1km  
Shop 200m  
Map 7 Page 102 Ref. 2

Mandalay Avenue, Nelly Bay, Magnetic Island

### PROPERTY FEATURES:

- Restaurant
- Tennis courts (2 – floodlit)
- Children's playground
- Parking ■ Pool
- Courtesy transfers from Nelly Bay Ferry Terminal (available if pre-booked)

### ACCOMMODATION FEATURES:

- Air-conditioning ■ Fan
- Limited cooking facilities with microwave
- Ironing facilities
- Hair dryer

Room serviced every 2 days

From \$150 PER ROOM PER NIGHT

ROOM TYPE	ADULTS	2 NTS	3 NTS	7 NTS
1 Apr – 21 Nov, 30 Nov – 19 Dec 08, 6 Jan – 31 Mar 09				
Resort	1 to 2	300	450	900*
Resort Family	1 to 4	398	597	1194*
20 Dec 08 – 5 Jan 09				
Resort	1 to 2	N/A	450	1050
Resort Family	1 to 4	N/A	597	1393

**Children** 0 to 11 years – free when sharing with an adult and using existing bedding.

**Max capacity** Resort – 3, Resort Family – 5.

MIRMAI

### BONUS OFFER

- \*Price includes one FREE night.

## Sails on Horseshoe ★★★★★



Relax in these spacious townhouses set across from the beach at Horseshoe Bay.

Beach 20m  
Shop 100m  
Map 7 Page 102 Ref. 5

13-15 Pacific Drive, Horseshoe Bay, Magnetic Island

### PROPERTY FEATURES:

- Pool ■ Spa
- Barbecue area
- Scooter hire (extra charge)
- Parking (undercover)

### ACCOMMODATION FEATURES:

- Air-conditioning ■ Fan
- Kitchen with microwave and dishwasher
- Video player
- Laundry
- Insect screens
- Cable TV ■ Balcony

Unit serviced weekly



From \$200 PER ROOM PER NIGHT

ROOM TYPE	ADULTS	3 NTS	5 NTS	7 NTS
1 – 12 Apr, 28 Jun – 18 Aug, 20 Sep – 10 Oct, 13 Dec 08 – 27 Jan 09				
2 Bedroom Townhouse	1 to 4	810	1350	1785
13 Apr – 27 Jun, 19 Aug – 19 Sep, 11 Oct – 12 Dec 08, 28 Jan – 31 Mar 09				
2 Bedroom Townhouse	1 to 4	630	1050	1400

**Children** 0 to 2 years – cot/bed charge payable direct. 3 to 17 years – adult prices apply.

**Max capacity** 6.

SAIMAI

## Mantra One Bright Point, Magnetic Island ★★★★★

From **\$155** PER ROOM PER NIGHT



2 BEDROOM



2 BEDROOM OCEAN

### Nelly Bay, Magnetic Island

Mantra One Bright Point offers a private and exclusive oceanfront property nestled amongst natural island beauty. Enjoy the resort's surroundings, located right next to the harbour and marina precinct and only a short walk to a number of restaurants, cafés, local galleries and attractions or take a tour and explore the island. The resort has a selection of one, two and three bedroom beach-house style apartments offering garden views or uninterrupted views of the Coral Sea.

#### PROPERTY FEATURES:

- Pools (4)
- Spa
- Barbecue area
- Gymnasium

#### ACCOMMODATION FEATURES:

- Air-conditioning
- Fan
- Deck ■ Balcony
- Washer/dryer
- Cable TV
- Kitchen with microwave

#### Unit serviced weekly

**Beach 500m**  
**Shop 100m**  
**Map 7 Page 102 Ref. 4**

ROOM TYPE	ADULTS	2 NTS	5 NTS	7 NTS
1 Apr – 20 Dec 08, 12 Jan – 31 Mar 09				
1 Bedroom	1 to 2	360	775	1085
1 Bedroom Ocean	1 to 2	410	900	1260
2 Bedroom	1 to 4	560	1175	1645
2 Bedroom Ocean	1 to 4	610	1300	1820
3 Bedroom Ocean	1 to 6	840	1875	2625
21 Dec 08 – 11 Jan 09				
1 Bedroom	1 to 2	N/A	1100	1540
1 Bedroom Ocean	1 to 2	N/A	1225	1715
2 Bedroom	1 to 4	N/A	1475	2065
2 Bedroom Ocean	1 to 4	N/A	1600	2240
3 Bedroom Ocean	1 to 6	N/A	2700	3780

Other prices apply for Magnetic Island Yacht Race. Ask your travel agent for details.

**Children** 0 to 12 years – free when sharing with an adult and using existing bedding.

**Max capacity** 1 Bedrooms – 3, 2 Bedrooms – 5, 3 Bedrooms – 7.

**ONEMA1**

## Peppers Blue on Blue



From **\$251** PER ROOM PER NIGHT



### 123-145 Sooning Street, Nelly Bay, Magnetic Island

Peppers Blue on Blue Resort offers deluxe accommodation right on the water's edge, overlooking the Magnetic Island marina and adjoining ferry terminal. The resort features a salt water lagoon swimming pool and well appointed rooms with modern facilities.

#### PROPERTY FEATURES:

- Day spa ■ Pool (lagoon style) ■ Restaurant
- Bar ■ Guest laundry ■ Room service (limited)
- Parking (undercover security)

#### ACCOMMODATION FEATURES:

- Air-conditioning ■ CD/DVD player
- Cable TV ■ Balcony
- Kitchen with microwave and dishwasher (2 Brm Suite – Turquoise and 3 Brm – Sapphire)
- Limited cooking facilities (Resort room, 1 Brm and 2 Brm Suite – Cobalt)
- Internet access (broadband)

#### Room serviced daily

**Beach 200m**  
**Shop 100m**  
**Map 7 Page 102 Ref. 3**

ROOM TYPE	ADULTS	1 NT	3 NTS	5 NTS
1 Apr 08 – 31 Mar 09				
Resort Room – Teal	1 to 2	251	753	1255
1 Bedroom – Azure	1 to 2	298	894	1490
2 Bedroom Suite – Cobalt	1 to 4	408	1224	2040
2 Bedroom – Turquoise	1 to 4	429	1287	2145
3 Bedroom – Sapphire	1 to 6	546	1638	2730
3 Bedroom – Aqua	1 to 6	609	1827	3045
3 Brm Penthouse – Marine	1 to 6	1076	3228	5380

**Children** 0 to 12 years – free when sharing with an adult and using existing bedding.

**Max capacity** Resort Room/1 Brm – 3, 2 Bedrooms – 5, 3 Bedrooms – 7.

**BLUMA1**