



Cable Beach

It's easy to be captivated by the laidback seaside town of Broome, known as the southern gateway to the Kimberley region.

No visit would be complete without spending some time on spectacular Cable Beach, 22 kilometres of pristine white sand lapped by the warm waters of the Indian Ocean. Witness a breathtaking Cable Beach sunset and take a camel ride along the beach, these are quintessential Broome experiences!

Broome's colourful pearling history has provided many of the town's attractions including the Japanese Cemetery and Chinatown, where pearl showrooms now line the streets. Catch a film at Sun Pictures, the oldest operating open air cinema in the world.

If you're lucky enough to be in town for the three days after the full moon from March to October each year, don't miss the Staircase to the Moon. This beautiful natural phenomenon is caused by the reflection of the rising full moon off the exposed mudflats.

Nearby Gantheaume Point has turquoise waters that meet striking red cliffs. Take a walk in 130 million year old dinosaur footprints at low tide or go on a four wheel drive adventure to remote Cape Leveque on the tip of the Dampier Peninsula. It's known for its Aboriginal heritage and dramatic coastal scenery.

Our Favourites

Experience a sunset camel ride along Cable Beach

Visit a local pearl farm or the pearl showrooms in Chinatown

Stroll through the famous Courthouse Markets on a Saturday morning

Watch a movie under the stars at the Sun Pictures Outdoor Cinema

Enjoy a beer overlooking Roebuck Bay at Matso's Brewery



FIND YOUR ACCOMMODATION

BROOME

REF.	APARTMENTS	PAGE
9	Bali Hai Resort & Spa ★★★★★	25
1	The Billi Resort ★★★★★☆	27
5	Blue Seas Resort ★★★★★☆	27
8	Broome Beach Resort ★★★★★	25
7	Cable Beachside Villas ★★★★★	25
2	Mantra Frangipani Broome ★★★★★☆	28
13	Moonlight Bay Suites ★★★★★	25
14	Oaks Broome ★★★★★☆	28
4	Oaks Cable Beach Sanctuary ★★★★★☆	28
6	Seashells Broome ★★★★★☆	29

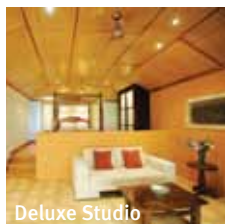
REF.	HOTELS	PAGE
3	Cable Beach Club Resort & Spa ★★★★★☆	27
12	The Mangrove Resort Hotel ★★★★★	26
11	Mercure Broome ★★★★★	26
10	Pinctada Cable Beach Resort & Spa ★★★★★	29

BROOME SURROUNDS

Refer to map on page 7

REF.	HOTELS	PAGE
1	Eco Beach ★★★★★	29

Bali Hai Resort & Spa ★★★★★



Deluxe Studio

Only a short stroll from the white sands of Cable Beach, the award winning Bali Hai Resort & Spa offers spacious Asian styled accommodation.

Cable Beach 700m
Map page 24 Ref. 9

6 Murray Road, Cable Beach

PROPERTY FEATURES:

- Free Wi-Fi (public areas)
- Bali Hai Spa (day spa) ■ Pool (heated)
- Spa ■ Guest laundry ■ Parking

ROOM FEATURES:

- Private open air bathroom or tropical shower
- Air-conditioning ■ Fans ■ Kitchen
- Courtyard and barbecue
- Cable TV (free)
- Washer/dryer ■ Ironing facilities
- 2 bathrooms in 2 Room Villas
- Hair dryer ■ All rooms non smoking

Room serviced daily



From **\$198** PER ROOM PER NIGHT*

1 APR – 31 MAY 14	ADULTS	1 NT	3 NTS	5 NTS
Studio	1 to 2	268	804	1340
Deluxe Studio	1 to 2	368	1104	1840
2 Room Villa	1 to 4	398	1194	1990
2 Room Villa Deluxe	1 to 4	478	1434	2390
1 JUN – 15 OCT 14	ADULTS	1 NT	3 NTS	5 NTS
Studio	1 to 2	328	984	1640
Deluxe Studio	1 to 2	448	1344	2240
2 Room Villa	1 to 4	478	1434	2390
2 Room Villa Deluxe	1 to 4	548	1644	2740
16 OCT 14 – 31 MAR 15	ADULTS	1 NT	3 NTS	5 NTS
Studio	1 to 2	198	594	990
Deluxe Studio	1 to 2	258	774	1290
2 Room Villa	1 to 4	298	894	1490
2 Room Villa Deluxe	1 to 4	368	1104	1840

Children 0 to 2 years – cot/bed charge payable direct.
3 to 16 years – adult prices apply.

Max capacity Studio/Deluxe Studio – 3,
2 Room Villa/2 Room Villa Deluxe – 5.

BALBME

Broome Beach Resort ★★★★★



A short stroll to Cable Beach and some of WA's best restaurants, this resort offers spacious apartments overlooking the pool or gardens.

Cable Beach 400m
Map page 24 Ref. 8

4 Murray Road, Cable Beach

PROPERTY FEATURES:

- Free Wi-Fi (public areas)
- Pools (2 – 1 outdoor, 1 children's pool)
- Barbecue areas (2) ■ Parking
- Local shuttle bus (minimal charge applies)

ROOM FEATURES:

- Air-conditioning ■ Fan ■ Patio
- Kitchen with microwave and dishwasher
- Nespresso compatible coffee machine
- Cable TV (free) ■ Safe
- Washer/dryer ■ Ironing facilities
- All rooms non smoking

Apartment serviced mid stay for stays of 7 nights or more



From **\$190** PER ROOM PER NIGHT*

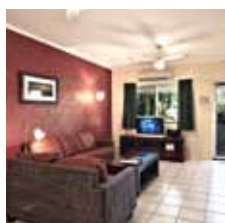
1 APR – 31 MAY 14	ADULTS	1 NT	3 NTS	5 NTS
1 Bedroom	1 to 2	290	795	1325
2 Bedroom	1 to 4	330	915	1525
3 Bedroom	1 to 6	365	1020	1700
1 JUN – 31 OCT 14	ADULTS	1 NT	3 NTS	5 NTS
1 Bedroom	1 to 2	310	855	1425
2 Bedroom	1 to 4	350	975	1625
3 Bedroom	1 to 6	385	1080	1800
1 NOV 14 – 31 MAR 15	ADULTS	1 NT	3 NTS	5 NTS
1 Bedroom	1 to 2	210	570	950
2 Bedroom	1 to 4	250	690	1150
3 Bedroom	1 to 6	285	795	1325

Children 0 to 11 years – free when sharing with 2 adults and using existing bedding.

Max capacity 1 Bedroom – 2, 2 Bedroom – 4, 3 Bedroom – 6.

BBRME

Cable Beachside Villas ★★★★★



A short walk from famous Cable Beach, restaurants and bars and set in rich tropical gardens, the resort is perfectly located for the holiday of a lifetime.

Cable Beach 500m
Map page 24 Ref. 7

2 Murray Road, Cable Beach

PROPERTY FEATURES:

- Pay Wi-Fi (public areas)
- Barbecue area
- Pool (heated in winter)
- Parking (undercover)

ROOM FEATURES:

- Air-conditioning ■ Fan ■ Patio
- Balcony (3 Brm) ■ CD/DVD player
- Kitchen with microwave ■ Hair dryer
- In-room movies (free)
- Washing machine ■ Safe
- Ironing facilities ■ All rooms non smoking

Apartment not serviced during stay (linen change mid stay for stays of 8 nights or more)



From **\$176** PER ROOM PER NIGHT*

1 APR – 31 MAY 13 – 31 OCT 14	ADULTS	3 NTS	5 NTS	7 NTS
2 Brm Superior Villa	1 to 4	795	1100	1540
3 Brm Superior Villa	1 to 6	900	1250	1750
3 Brm Deluxe Villa/3 Brm Spa Villa	1 to 6	990	1375	1925
1 – 26 JUN, 21 JUL – 8 AUG, 17 AUG – 12 OCT 14	ADULTS	3 NTS	5 NTS	7 NTS
2 Brm Superior Villa	1 to 4	900	1275	1785
3 Brm Superior Villa	1 to 6	1005	1425	1995
3 Brm Deluxe Villa/3 Brm Spa Villa	1 to 6	1125	1600	2240
1 NOV 14 – 31 MAR 15	ADULTS	2 NTS	5 NTS	7 NTS
2 Brm Superior Villa	1 to 4	440	880	1232
3 Brm Superior Villa	1 to 6	530	1060	1484
3 Brm Deluxe Villa/3 Brm Spa Villa	1 to 6	580	1160	1624

Other prices apply 27 Jun – 20 Jul, 9 – 16 Aug 14.

Children 0 to 2 years – cot/bed charge payable direct.
3 to 11 years – adult prices apply.

Max capacity 2 Brm Superior Villa – 4, 3 Bedrooms – 6.

CARBME

Moonlight Bay Suites ★★★★★



Set amongst tropical gardens, Moonlight Bay Suites offers spacious one and two bedroom apartments with views of Roebuck Bay.

Town Centre 1km
Map page 24 Ref. 13

51 Carnarvon Street, Broome

PROPERTY FEATURES:

- Kiva Health & Relaxation Centre
- Pool ■ Barbecue area
- Room service (limited)
- Guest laundry ■ Gymnasium ■ Parking
- Non smoking

ROOM FEATURES:

- Pay Wi-Fi
- Air-conditioning ■ Fan ■ Cable TV
- In-room movies (free)
- Kitchen with microwave
- Dishwasher (2 Bedroom Deluxes)
- Hair dryer

Apartment serviced daily



From **\$233** PER ROOM PER NIGHT*

1 APR – 31 OCT 14	ADULTS	1 NT	3 NTS	5 NTS
1 Bedroom	1 to 2	289	867	1445
1 Bedroom Bay View	1 to 2	320	960	1600
2 Bedroom	1 to 5	405	1215	2025
2 Bedroom Deluxe	1 to 5	486	1458	2430
1 NOV 14 – 31 MAR 15	ADULTS	1 NT	3 NTS	5 NTS
1 Bedroom	1 to 2	233	699	1165
1 Bedroom Bay View	1 to 2	261	783	1305
2 Bedroom	1 to 5	304	912	1520
2 Bedroom Deluxe	1 to 5	365	1095	1825

Children 0 to 12 years – up to 2 children free when sharing with 2 adults and using existing bedding.

Max capacity 1 Bedroom/1 Bedroom Bay View – 3,
2 Bedrooms – 5.

MOOBME

The Mangrove Resort Hotel ★★★★★



47 Carnarvon Street, Broome

The Mangrove Resort Hotel is idyllically set amongst lush tropical gardens, boasting stunning views over Roebuck Bay and situated within short walking distance from Chinatown. This premier location makes The Mangrove Resort Hotel the ideal accommodation choice for both holiday makers and business people when visiting Broome.

The Mangrove Resort offers a wide range of guest facilities including two sparkling swimming pools both with spas. The Tides Garden Restaurant and Bar with its magnificent deck overlooking the bay is an extremely popular venue complete with live entertainment on weekends.

PROPERTY FEATURES:

- Restaurants (2)
- Bars (2)
- Kiosk
- Room service (limited)
- Pools (2)
- Spas (2)
- Parking
- Courtesy airport transfers (available if pre-booked)

ROOM FEATURES:

- Air-conditioning
- Fan
- Tea/coffee making facilities
- Cable TV
- In-room movies (free)
- Ironing facilities
- Hair dryer

Room serviced daily
 Town Centre 500m
 Map page 24 Ref. 12

From **\$195** PER ROOM PER NIGHT*



1 APR – 30 JUN 14	ADULTS	1 NT	3 NTS	5 NTS
Garden View	1 to 2	255	765	1275
Superior Poolside [^]	1 to 2	260	520	1040
1 JUL – 31 OCT 14	ADULTS	1 NT	3 NTS	5 NTS
Garden View	1 to 2	255	765	1275
Superior Poolside	1 to 2	260	780	1300
1 NOV 14 – 31 MAR 15	ADULTS	1 NT	3 NTS	5 NTS
Garden View	1 to 2	195	585	975
Superior Poolside [^]	1 to 2	200	400	800

Room and Breakfast prices also available.

Children 0 to 11 years – free when sharing with 2 adults and using existing bedding.

Max capacity 3.

MANBME

EXCLUSIVELY FOR YOU

[^] FREE Night Offer: Stay 3 nights, pay for 2.
 (3 and 5 night price includes 1 free night)

Mercure Broome ★★★★★



Superior Pool View

1 Weld Street, Broome

Mercure Hotel Broome is just walking distance from the heart of Broome and only 10 minutes drive from spectacular Cable Beach, making it the ideal location to explore Broome and its surrounds. The hotel is set in tropical gardens and is surrounded by the sparkling blue waters of Roebuck Bay. Enjoy a relaxing day by the pool and at the end of the day, take in another glorious sunset. The perfect atmosphere for relaxation or adventure.

PROPERTY FEATURES:

- Restaurant
- Bars (2)
- Room service (limited)
- Bottle shop
- Pool
- Tennis court
- Barbecue area
- Guest laundry
- Parking

ROOM FEATURES:

- Pay Wi-Fi
- Air-conditioning
- Fan
- Tea/coffee making facilities
- In-room movies (free)
- Ironing facilities
- Hair dryer
- All rooms non smoking

Room serviced daily

Town Centre 1km
 Map page 24 Ref. 11

From **\$131** PER ROOM PER NIGHT*



1 APR – 10 AUG, 19 AUG – 30 SEP 14	ADULTS	1 NT	3 NTS	5 NTS
Standard	1 to 2	231	693	1155
Superior	1 to 2	249	747	1245
Deluxe	1 to 2	259	777	1295
1 OCT 14 – 31 MAR 15 [^]	ADULTS	1 NT	3 NTS	5 NTS
Standard	1 to 2	163	326	652
Superior	1 to 2	183	366	732
Deluxe	1 to 2	192	384	768

Other prices apply 11 – 18 Aug 14.

Children 0 to 2 years – cot/bed charge payable direct.
 3 to 15 years – up to 2 children free when sharing with an adult and using existing bedding.

Max capacity Standard – 3, Superior/Deluxe – 2.

MERBME

BONUS OFFER

[^] FREE Night Offer: Stay 3 nights, pay for 2.
 (3 and 5 night price includes 1 free night)

The Billi Resort ★★★★★



23 Coucal Street, Cable Beach

PROPERTY FEATURES:

- Free Wi-Fi (public areas) ■ Internet facilities
- Pool ■ Sundeck
- Barbecue area
- Bicycle hire (free)
- Guest laundry ■ Parking

ROOM FEATURES:

- Air-conditioning (except Eco Tents)
- Fan ■ Balcony
- Limited cooking facilities (Eco Tents)
- Kitchen with microwave and dishwasher (Studios and Villas)
- CD/DVD player ■ iPod docking station
- All rooms non smoking

Room serviced mid stay

Offering a private and intimate tropical setting, this boutique resort features superb self contained villas and eco tent accommodation.

Cable Beach 1km
Map page 24 Ref. 1

From \$145 PER ROOM PER NIGHT*

1 APR – 30 JUN, 14 – 31 OCT 14	ADULTS	1 NT	3 NTS	5 NTS
Studio/Luxury Queen Eco Tent	1 to 2	205	615	1025
1 Bedroom Villa	1 to 2	265	795	1325
Luxury King Eco Tent	1 to 2	295	885	1475
2 Bedroom Villa	1 to 4	385	1155	1925
1 NOV – 23 DEC 14, 4 JAN – 31 MAR 15	ADULTS	1 NT	3 NTS	5 NTS
Studio/Luxury Queen Eco Tent	1 to 2	145	435	725
1 Bedroom Villa	1 to 2	185	555	925
Luxury King Eco Tent	1 to 2	195	585	975
2 Bedroom Villa	1 to 4	255	765	1275

Other prices apply 1 Jul – 13 Oct, 24 Dec 14 – 3 Jan 15.

Children 0 to 11 years – free when sharing with 2 adults and using existing bedding.

Max capacity Studio – 2, 1 Bedroom Villa/Luxury Queen Eco Tent – 2 adults or 2 adults/1 child, Luxury King Eco Tent – 2 adults/2 children, 2 Bedroom Villa – 4 adults or 2 adults/2 children.

BILBME

Blue Seas Resort ★★★★★



10 Sanctuary Road, Cable Beach

PROPERTY FEATURES:

- Free Wi-Fi (public areas)
- Pools (2 heated) ■ Spa ■ Barbecue area
- Guest lounge ■ Hairdresser
- Guest laundry ■ Parking
- Local shuttle bus (minimal charge applies)

ROOM FEATURES:

- Air-conditioning ■ Fan ■ Balcony
- Kitchen with microwave and dishwasher
- Barbecue ■ In-room movies (free)
- CD/DVD player ■ Washer/dryer
- Ironing facilities ■ Hair dryer
- All rooms non smoking

Apartment serviced mid stay for stays of 7 nights or more

Located just a short walk to Cable Beach, the spacious apartments overlook the pool and offer a high level of comfort and style.

Cable Beach 500m
Map page 24 Ref. 5

From \$122 PER ROOM PER NIGHT*

1 APR – 31 MAY 14	ADULTS	2 NTS	3 NTS	5 NTS
1 Bedroom	1 to 2	490	675	1125
1 JUN – 31 OCT 14	ADULTS	2 NTS	3 NTS	5 NTS
1 Bedroom	1 to 2	610	825	1375
1 NOV 14 – 31 MAR 15	ADULTS	2 NTS	3 NTS	5 NTS
1 Bedroom	1 to 2	390	510	850

Children 0 to 2 years – cot/bed charge payable direct. 3 to 14 years – adult prices apply.

Max capacity 4.

BLUBME

BONUS OFFER

FREE Night Offer: Stay 4 nights, pay for 3 or stay 7 nights, pay for 5, valid 1 Jan – 31 Mar 15.

Cable Beach Club Resort & Spa ★★★★★



Cable Beach Road, Cable Beach

The multi award winning Cable Beach Club Resort & Spa is the only resort overlooking Broome's iconic Cable Beach. A tropical oasis just 10 minutes from the town of Broome, the resort is a 26 acre haven set amongst tranquil gardens and features a range of Broome-style accommodation including studios, self contained bungalows, private villas to indulgent suites featuring views of the Indian Ocean in the distance.

The Resort offers a range of culinary choices that will delight your senses, choose from a range of dining experiences on-site. Relax, rejuvenate and restore your mind body and soul at the Chohoya Spa & Salon, complete with seven treatment rooms, a double Vichy shower room and hair salon.

PROPERTY FEATURES:

- Free Wi-Fi (public areas)
- Chahoya Spa and Salon (day spa)
- Buddha's Sanctuary ■ 24 hour reception
- Room service (limited) ■ Restaurants (3)
- Bars (4) ■ Pools (2 – 1 adults only)
- Tennis courts (2) ■ Mini golf
- Children's water playground
- Gymnasium ■ Business facilities ■ Parking
- Child minding available

ROOM FEATURES:

- Air-conditioning ■ Fan
- Tea/coffee making facilities
- Limited cooking facilities (Bungalows, Villas)
- Mini bar ■ Cable TV (free)
- iPod docking station
- Safe ■ Ironing facilities ■ Hair dryer

Room serviced daily

Cable Beach 50m
Map page 24 Ref. 3



From \$259 PER ROOM PER NIGHT*

1 APR – 31 MAY 14	ADULTS	1 NT	3 NTS	5 NTS
Garden View Studio [^]	1 to 2	299	897	1495
Pool View Studio [^]	1 to 2	409	1227	2045
Pool Terrace Studio/ Ocean Side Studio [^]	1 to 2	462	1386	2310
Classic Bungalow [^]	1 to 4	498	1494	2490
Spa Superior Bungalow [^]	1 to 4	550	1650	2750
Spa Deluxe Bungalow ⁺	1 to 7	673	2019	3365
Villa ⁺	1 to 2	1104	3312	5520
1 JUN – 12 OCT 14	ADULTS	1 NT	3 NTS	5 NTS
Garden View Studio [^]	1 to 2	395	1185	1975
Pool View Studio [^]	1 to 2	443	1329	2215
Pool Terrace Studio/ Ocean Side Studio [^]	1 to 2	499	1497	2495
Classic Bungalow [^]	1 to 4	695	2085	3475
Spa Superior Bungalow [^]	1 to 4	745	2235	3725
Spa Deluxe Bungalow ⁺	1 to 7	945	2835	4725
Villa ⁺	1 to 2	1220	3660	6100
13 OCT 14 – 31 MAR 15	ADULTS	1 NT	3 NTS	5 NTS
Garden View Studio [^]	1 to 2	259	777	1295
Pool View Studio [^]	1 to 2	299	897	1495
Pool Terrace Studio/ Ocean Side Studio [^]	1 to 2	369	1107	1845
Classic Bungalow [^]	1 to 4	419	1257	2095
Spa Superior Bungalow [^]	1 to 4	479	1437	2395
Spa Deluxe Bungalow ⁺	1 to 7	589	1767	2945
Villa ⁺	1 to 2	979	2937	4895

Other room types also available.

Includes ⁺ Full breakfast daily.
⁺ Return personal transfers from Broome airport.
⁺ Sparkling wine in room on arrival.
[^] Return transfers from Broome airport.

Children 0 to 12 years – free when sharing with 2 adults and using existing bedding, room only. 0 to 17 years – not catered for in Pool View, Pool Terrace Studios and Villas.

Max capacity Villa – 2, Garden View Studio/Pool View Studio/Pool Terrace Studio/Ocean Side Studio – 3, Classic Bungalow/Spa Superior Bungalow – 5, Spa Deluxe Bungalow – 8. **CABBME**

BONUS OFFER

FREE meals for children 0 to 12 years when dining with paying adults, valid 1 Apr – 31 May 14.

Broome

Mantra Frangipani Broome ★★★★★



Built in contemporary Broome style with tropical gardens, each villa features a private outdoor shower, day bed and courtyard.

Cable Beach 900m
Map page 24 Ref. 2

15 Millington Road, Cable Beach

PROPERTY FEATURES:

- Free Wi-Fi (public areas)
- Pools (2) ■ Barbecue area ■ Guest lounge
- Parking (undercover)

ROOM FEATURES:

- Courtyard ■ Private outdoor shower
- Fan ■ Day bed
- Air-conditioning ■ Barbecue
- Kitchen with microwave and dishwasher
- Cable TV ■ CD/DVD player ■ Safe
- Laundry ■ Hair dryer
- All rooms non smoking

Room serviced weekly



From **\$209** PER ROOM PER NIGHT*

1 APR – 31 MAY, 1 SEP – 31 OCT 14	ADULTS	2 NTS	3 NTS	5 NTS
1 Bedroom	1 to 2	518	777	1295
2 Bedroom	1 to 4	758	1137	1895
3 Bedroom	1 to 6	1118	1677	2795

1 JUN – 10 AUG, 17 – 31 AUG	ADULTS	2 NTS	3 NTS	5 NTS
1 Bedroom	1 to 2	598	897	1495
2 Bedroom	1 to 4	838	1257	2095
3 Bedroom	1 to 6	1198	1797	2995

1 NOV 14 – 31 MAR 15	ADULTS	2 NTS	3 NTS	5 NTS
1 Bedroom	1 to 2	418	627	1045
2 Bedroom	1 to 4	658	987	1645
3 Bedroom	1 to 6	1018	1527	2545

Other prices apply 11 – 16 Aug 14.

Children 0 to 2 years – cot/bed charge payable direct.
3 to 12 years – adult prices apply.

Max capacity 1 Bedroom – 2, 2 Bedroom – 5, 3 Bedroom – 7.

FRABME

Oaks Broome ★★★★★



99 Robinson Street, Broome

Enjoy cosmopolitan living at Oaks Broome in picturesque Roebuck Bay. Surrounded by landscaped gardens and swimming pools, Oaks Broome has been superbly designed to provide accommodation which will appeal to the most discerning leisure or business traveller.

Contemporary, well appointed hotel rooms and apartments feature balconies and large decks overlooking the pools. A superb café, restaurant and bar overlooking the central pool adds to the ambience of this tropical paradise.

Oaks Broome is just a short drive to Cable Beach and many of Broome's most famous attractions, making it the perfect base from which to explore all that this spectacular region has to offer.

PROPERTY FEATURES:

- Restaurant ■ Café
- Bar ■ Pools (2)
- Guest laundry
- Parking ■ Non smoking

ROOM FEATURES:

- Pay wired internet (1 and 2 Bedrooms)
- Air-conditioning ■ Balcony
- Limited cooking facilities (Studios)
- Kitchen (1 and 2 Bedrooms)
- Cable TV ■ CD/DVD player
- Washer/dryer (2 Bedrooms)
- Ironing facilities ■ Hair dryer

Room serviced daily

Town Centre 2km
Map page 24 Ref. 14



From **\$134** PER ROOM PER NIGHT*



1 Bedroom

1 APR – 15 AUG, 17 AUG – 30 SEP 14	ADULTS	1 NT	5 NTS	7 NTS
Hotel^	1 to 2	284	1076	1345
Studio	1 to 2	309	1470	1988
1 Bedroom^	1 to 2	325	1240	1550
1 Bedroom Poolside	1 to 2	345	1650	2240
2 Bedroom^	1 to 4	406	1564	1955
2 Bedroom Poolside	1 to 4	426	2055	2807

1 OCT 14 – 31 MAR 15	ADULTS	1 NT	5 NTS	7 NTS
Hotel^	1 to 2	202	748	935
Studio	1 to 2	223	1040	1386
1 Bedroom^	1 to 2	243	912	1140
1 Bedroom Poolside	1 to 2	267	1260	1694
2 Bedroom^	1 to 4	304	1156	1445
2 Bedroom Poolside	1 to 4	325	1550	2100

Other prices apply 16 Aug 14.

Children 0 to 12 years – free when sharing with an adult and using existing bedding.

Max capacity Hotel/Studio – 2, 1 Bedrooms – 3, 2 Bedrooms – 5.

OAKBME

BONUS OFFER

^ FREE Night Offer: Stay 5 nights, pay for 4 or stay 7 nights, pay for 5.
(5 night price includes 1 free night, 7 night price includes 2 free nights)

Oaks Cable Beach Sanctuary ★★★★★



Located just a short walk to the pristine sands of Cable Beach and the heart of Broome, the resort features rooms with modern facilities and amenities.

Cable Beach 600m
Map page 24 Ref. 4

1 Lullfitz Drive, Cable Beach

PROPERTY FEATURES:

- Free Wi-Fi (public areas)
- Pools (5)
- Parking (security)

ROOM FEATURES:

- Air-conditioning ■ Balcony/courtyard
- Limited cooking facilities with microwave (Studio)
- Kitchen with microwave and dishwasher (Apartments)
- Cable TV ■ Laundry (Apartments)
- Ironing facilities ■ Hair dryer

Room serviced daily



From **\$149** PER ROOM PER NIGHT*

1 APR – 14 AUG, 17 AUG – 30 SEP 14	ADULTS	1 NT	5 NTS	7 NTS
Studio	1 to 2	309	1176	1470
1 Bedroom	1 to 2	325	1240	1550
2 Bedroom	1 to 4	406	1564	1955

1 OCT 14 – 31 MAR 15	ADULTS	1 NT	5 NTS	7 NTS
Studio	1 to 2	223	832	1040
1 Bedroom	1 to 2	243	912	1140
2 Bedroom	1 to 4	304	1156	1445

Other prices apply 15 – 16 Aug 14. Other room types also available.

Children 0 to 12 years – free when sharing with an adult and using existing bedding.

Max capacity Studio – 2, 1 Bedroom – 3, 2 Bedroom – 5.

OCCBME

BONUS OFFER

FREE Night Offer: Stay 5 nights, pay for 4 or stay 7 nights, pay for 5.
(5 night price includes 1 free night, 7 night price includes 2 free nights)

Seashells Broome ★★★★★



4-6 Challenor Drive, Cable Beach

Located only 300 metres from Cable Beach, Seashells Broome offers a peaceful and tranquil atmosphere for both families and couples. Nestled amongst lush and secluded gardens, the resort offers stylish, fully self contained, spacious apartments and bungalows.

Seashells Broome features a large temperature controlled swimming pool, separate heated spa with sun lounges to relax and a children's paddling pool and play area for the kids to enjoy.

PROPERTY FEATURES:

- Pools (2 – 1 wading)
- Barbecue area
- Spa
- Children's playground
- Parking
- Resort shop

ROOM FEATURES:

- Pay Wi-Fi
- Air-conditioning
- Fan ■ Balcony
- Kitchen with microwave
- Cable TV
- In-room movies (free)
- CD/DVD player
- iPod docking station
- Safe ■ Laundry
- Ironing facilities
- Hair dryer
- All rooms non smoking

Apartment serviced weekly

Cable Beach 300m
Map page 24 Ref. 6



From **\$188** PER ROOM PER NIGHT*



1 APR – 31 MAY 14 [^]	ADULTS	1 NT	4 NTS	5 NTS
1 Bedroom	1 to 2	320	960	1280
2 Bedroom	1 to 4	385	1155	1540
3 Bedroom Bungalow	1 to 6	499	1497	1996

1 JUN – 31 OCT 14	ADULTS	1 NT	3 NTS	5 NTS
1 Bedroom	1 to 2	320	960	1600
2 Bedroom	1 to 4	385	1155	1925
3 Bedroom Bungalow	1 to 6	499	1497	2495

1 NOV 14 – 31 MAR 15 [^]	ADULTS	1 NT	4 NTS	5 NTS
1 Bedroom	1 to 2	235	705	940
2 Bedroom	1 to 4	270	810	1080
3 Bedroom Bungalow	1 to 6	355	1065	1420

Children 0 to 12 years – free when sharing with an adult and using existing bedding.

Max capacity 1 Bedroom – 2, 2 Bedroom – 4,
3 Bedroom Bungalow – 6.

SEABME

BONUS OFFER

[^] FREE Night Offer: Stay 4 nights, pay for 3.
(4 and 5 night prices include 1 free night)

Pinctada Cable Beach Resort & Spa ★★★★★



10 Murray Road, Cable Beach

PROPERTY FEATURES:

- Day spa ■ Restaurant ■ Café
- Bars (2) ■ Room service (24 hour)
- Fitness room ■ Pool ■ Spa
- Guest laundry ■ Non smoking

ROOM FEATURES:

- Pay wired internet
- Air-conditioning ■ Fan
- In-room movies (pay to view)
- Safe ■ Cable TV
- Mini bar ■ Hair dryer
- Tea/coffee making facilities
- Balcony or patio ■ Bathrobes

Room serviced daily



Pinctada Cable Beach Resort & Spa captures Broome's unique beauty and climate, offering a range of hotel studios, suites and family villas.

Cable Beach 500m
Map page 24 Ref. 10

From **\$228** PER ROOM PER NIGHT*

1 APR – 18 MAY, 26 MAY – 30 JUN, 1 SEP – 31 OCT 14	ADULTS	1 NT	3 NTS	5 NTS
Shinju Studio	1 to 2	291	873	1235
Honjin Courtyard Studio	1 to 2	325	975	1380

1 JUL – 10 AUG, 18 – 31 AUG 14	ADULTS	1 NT	3 NTS	5 NTS
Shinju Studio	1 to 2	373	1119	1585
Honjin Courtyard Studio	1 to 2	408	1224	1735

1 NOV 14 – 31 MAR 15	ADULTS	1 NT	3 NTS	5 NTS
Shinju Studio	1 to 2	228	684	970
Honjin Courtyard Studio	1 to 2	262	786	1115

Other prices apply 19 – 25 May, 11 – 17 Aug 14. Other room types also available. Room and breakfast prices also available.

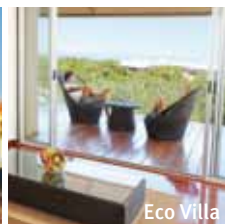
Includes Return coach transfers from Broome Airport.
Welcome drink on arrival.

Children 0 to 11 years – free when sharing with 2 adults and using existing bedding.

Max capacity Shinju Studio – 3, Honjin Courtyard Studio – 2.

PCBBME

Eco Beach ★★★★★



Cape Villaret (127km south of Broome)

PROPERTY FEATURES:

- Pay Wi-Fi (public areas)
- Restaurant ■ Bar ■ Pool
- Massage facilities and health suite

ROOM FEATURES:

- Air-conditioning (Eco Villas)
- Limited cooking facilities (Eco Villas)

Room serviced mid stay for stays of 3 nights or more

Access: By car (4WD recommended), light aircraft or helicopter from Broome.

One of the world's most remarkable destinations, Eco Beach is a unique eco resort set in a pristine and untouched landscape south of Broome.

Broome 127km
Map page 7 Ref. 1



From **\$124** PER ROOM PER NIGHT*

1 JUL – 31 OCT 14	ADULTS	1 NT	2 NTS	4 NTS
Garden View Eco Tent	1 to 2	225	450	675
Garden View Eco Villa	1 to 2	345	690	1035

1 NOV 14 – 2 JAN 15	ADULTS	1 NT	2 NTS	4 NTS
Garden View Eco Tent	1 to 2	165	330	495
Garden View Eco Villa	1 to 2	250	500	750

Other prices apply 1 Apr – 30 Jun 14. Retreat is closed 2 Jan – 31 Mar 15. Ocean Front & Ocean View rooms available.

Children 0 to 11 years – free when sharing with an adult and using existing bedding. Cot free of charge.

Max capacity Eco Tent – 3, Eco Villa – 4. **ECOBME**

EXCLUSIVELY FOR YOU

FREE upgrade from a Garden View Eco Tent/Villa to an Ocean View for stays of 2 nights or more. (subject to availability)

BONUS OFFER

FREE Night Offer: Stay 4 nights, pay for 3.
(4 night price includes 1 free night)

Tours from Broome

Broome Sightseeing



In just two hours, explore Broome's past and present at various locations. View the wide expanses of Cable Beach, experience spectacular Gantheaume Point with ancient sandstone formations.

Wander through the ancient granite headstones at the Japanese Cemetery and learn about the history of the hard hat divers. Stop at the scenic Town Beach before learning about Matso's Brewery and receive a voucher to return and sample their famous beer. Drive by Sun Pictures, Streeter's Jetty and finish at Broome's last remaining wooden pearling luggers.

INCLUDES:

- Beer sample voucher for Matso's Broome Brewery
- Light refreshments ■ Local guide ■ Small group
- Return transfers from Broome accommodation

Departs: From Broome at 8:30am
Daily (Apr – Oct)
On request (Nov – Mar)

Returns: 11am

PRICE:

Adult	\$65
Concession	\$60
Child 6-16 years	\$35
Family 2 adults and 2 children	\$165

BROOME SIGHTSEEING TOURS

BSSBME

Broome Tour with Camel Ride



A great afternoon tour taking in all the highlights of Broome. Visit Chinatown, Sun Pictures, Roebuck Bay and Old Broome and pass by the old pearling masters' homes before stopping to refresh at Matso's Broome Brewery. Travel on to more of Broome's top attractions including Gantheaume Point, Anastasia's Pool and the Japanese Cemetery. Then embark on one of Broome's most famous afternoon pastimes, a camel ride along Cable Beach at sunset. This is a must do for any visit to Broome.

INCLUDES:

- Camel ride along Cable Beach
- Chinatown, Sun Pictures and Japanese Cemetery
- Matso's Broome Brewery
- Gantheaume Point and Anastasia's Pool
- Expert guide and commentary
- Return transfers from Broome accommodation

Departs: Mon to Sat from Broome at 12:30pm
(Apr – Oct)

Returns: 6pm

PRICE:

Adult	\$155
Concession	\$145
Child 4-12 years	\$95

KIMBERLEY WILD EXPEDITIONS

KWEBME

Willie Creek Pearl Farm



Discover how the rare and beautiful Australian South Sea Pearl is produced at the Willie Creek Pearl Farm in Broome. Visitors will gain a unique insight into the modern Australian pearling process, from the seeding of an oyster shell to the harvesting and grading of a pearl, right through to the final stunning product on display in the showroom. Cruise the azure waters of Willie Creek to view oyster panels suspended in their natural environment.

INCLUDES:

- Pearl farm tour ■ Boat cruise
- Seeding demonstration
- Morning or afternoon tea
- Jewellery showroom visit ■ Souvenir guide
- Return transfers from Broome accommodation

Departs: from Broome on request
Daily (Mar – Oct)
Sun to Fri (Nov – Feb)

Duration: 4 hours

PRICE:

Adult	\$105
Concession	\$90
Child 6-16 years	\$55
Family 2 adults and 2 children	\$265

WILLIE CREEK PEARL FARM

WPLBME



Cape Leveque in a Day Adventure



The Dampier Peninsula is a delight for those seeking a Kimberley experience that is culturally rewarding in a beautiful environment. Head to Beagle Bay Community and see the glimmering pearl shell altar at Sacred Heart Church. Visit a local aquaculture hatchery and view the dramatic tidal flows of the Buccaneer Archipelago. Enjoy a picnic lunch and time on the beach (depending on the tides).

INCLUDES:

- Cape Leveque
- Beagle Bay Pearl Shell Church Altar
- One Arm Point Aquaculture Hatchery
- Morning and afternoon tea
- Lunch
- Return transfers from Broome accommodation

Departs: Sun, Tue, Thu from Broome at 6:30am
(Apr – Oct)

Returns: 7pm

PRICE:

Adult	\$269
Concession	\$249
Child 4-12 years	\$169

KIMBERLEY WILD EXPEDITIONS

KWEBME

Windjana Gorge and Tunnel Creek



This full day tour offers a delightful glimpse of Kimberley's beautiful Windjana Gorges. Travel east from Broome and head into Kimberley cattle country via the Derby Boab Prison Tree and the Gibb River Road. Spend the morning in the outback oasis of Windjana Gorge, a 3.5 kilometre geological wonder. Search for freshwater crocodiles, local birdlife and indigenous bushstucker beneath gorge walls rising 90 metres. In the afternoon explore fascinating Tunnel Creek, a 750 metre cave system. Discover secret caves and subterranean wildlife. A swim in the waterhole is the highlight of the day.

INCLUDES:

- Gibb River Road ■ Boab Prison Tree
- Morning and afternoon tea ■ Lunch
- Air-conditioned 4WD vehicle
- Return transfers from Broome accommodation

Departs: Mon, Wed, Fri from Broome at 6:30am
(Apr – Oct)

Returns: 10pm

PRICE:

Adult	\$249
Concession	\$229
Child 4-12 years	\$149

KIMBERLEY WILD EXPEDITIONS

KWEBME

Islands of the Giant Tides



This unique afternoon tour offers the chance to experience the extraordinary Islands of the Giant Tide at last light - the best time to witness this special place as the wind settles and the sun goes down. Discover the art of pearling at the remote Cygnet Bay Pearl Farm, cruise the magnificent waters of Cygnet Bay and the Buccaneer Archipelago, home to the Giant Tides, and enjoy a delightful 3 course dinner prepared by the Pearl Farm Chefs.

INCLUDES:

- Beagle Bay Pearl Shell Altar
- Cygnet Bay Pearl Farm
- Last Light Islands Sunset boat cruise
- Afternoon tea
- Three course dinner
- Return transfers from Broome accommodation

Departs: Mon, Wed, Fri from Broome at 11am
(Apr – Oct)

Returns: 9:30pm

PRICE:

Adult	\$495
Concession	\$475
Child 4-12 years	\$395

KIMBERLEY WILD EXPEDITIONS

KWEBME

Buccaneer Explorer Scenic Flight



HIGHLIGHTS:

- Buccaneer Archipelago
- King Sound
- Orbits of the Horizontal Waterfalls
- Koolan Island
- Cape Leveque

Enjoy panoramic views of Broome Town and Cable Beach heading north across the Dampier Peninsula in a high wing scenic aircraft.

View the spectacular colours and contrasts of the Buccaneer Archipelago on this memorable flight over Talbot Bay and the tidal Horizontal Falls.

Exiting over the turquoise waters of Talbot Bay head out towards the myriad of deserted islands that comprise the Buccaneer Archipelago first chartered by William Dampier in 1688. Continue on towards the open cut iron ore mines of Koolan Island and Cockatoo Island.

Enjoy 1½ hours (Half Day) or 3 hours (Extended) at Cape Leveque, the northernmost point of the Dampier Peninsula. Take a swim in the sheltered waters and relax with refreshments at Kooljaman overlooking the Indian Ocean.

INCLUDES:

- Scenic plane flight over the Buccaneer Archipelago
- Stopover at Cape Leveque including refreshments
- Personal headsets for pilot commentary
- Return transfers from Broome accommodation

Departs: From Broome
Half Day: Daily at 7:30am and 12pm (Apr – Nov)
Extended: Daily at 8:30am (Nov – Apr)

Returns: 1pm, 5:30pm (Half Day)
2pm (Extended)

PRICE PER PERSON:	HALF DAY	EXTENDED
Adult	\$540	\$560
Child 3-12 years [^]	\$270	\$280

[^]Child prices only apply when booking 4 paying adults.

KING LEOPOLD AIR

KINBME

Kimberley Explorer Scenic Flight



HIGHLIGHTS:

- Geikie Gorge Boat Cruise
- Fitzroy Crossing
- Windjana Gorge
- Orbits of the Horizontal Waterfalls
- Buccaneer Archipelago

Get a feel for the ruggedness, remoteness and beauty of the Kimberley. Fly across vast cattle country to Fitzroy Crossing and join a boat cruise on the Fitzroy River and Geikie Gorge. The rock formations and colours of this ancient reef system are awe-inspiring.

After touring Fitzroy Crossing, fly over Windjana Gorge formed by the Lennard River cutting through a 350 million year old Devonian reef. The full length of Windjana Gorge can be viewed as you fly through the King Leopold Ranges and onto Mount Hart Wilderness Lodge and Conservation Park for lunch.

The next major attractions are the Horizontal Waterfalls and the Buccaneer Archipelago before landing at Cape Leveque for refreshments and a swim. The tour returns along the bays and beaches of the Dampier Peninsula arriving into Broome.

INCLUDES:

- Four hour scenic plane flight
- Geikie Gorge cruise
- Town tour of Fitzroy Crossing
- Lunch
- Afternoon tea
- Souvenir photo
- Return transfers from Broome accommodation

Departs: Daily from Broome at 6:30am (Apr – Oct)
Time may vary with cruise departure.

Returns: 5:30pm

PRICE PER PERSON:	
Adult	\$980
Child 3-12 years [^]	\$490

[^]Child prices only apply when booking 4 paying adults.

KING LEOPOLD AIR

KINBME

2 Day Kimberley Gorges Escape



HIGHLIGHTS:

- Gibb River Road
- Boab Prison Tree
- Windjana Gorge
- Tunnel Creek
- Fitzroy River ■ Geikie Gorge cruise

Day 1: Broome to Geikie Gorge

Begin the journey into Kimberley Gorge country enjoying the unique scenery. Stop for morning tea near the mighty Fitzroy River and see a thousand year old boab tree. On reaching the historic town of Fitzroy Crossing, discover the ancient Napier Range and magnificent Geikie Gorge. Join a guided cruise down the Fitzroy River and travel past the colourful gorge cliffs, where the swirling floods of the wet season has left its bleached mark. Towards sunset, settle in for an evening under the Kimberley night sky. Enjoy a campfire barbecue. **(LD)**

Day 2: Windjana Gorge and Tunnel Creek to Broome

After breakfast travel the 4WD route to Tunnel Creek, a 750 metre cave system in an ancient Devonian reef. Explore secret caves, encounter unusual wildlife and learn of the legendary Jandamarra, an Aboriginal freedom fighter. A refreshing swim in an idyllic waterhole is a highlight of the day. Travel to Windjana Gorge for a delicious lunch and to search for freshwater crocodiles, local birdlife and indigenous bushtucker. Travelling back through Kimberley cattle country, stop in Derby to see the Boab Prison Tree. **(BL)**

INCLUDES:

- 1 nights camping, cabin or motel accommodation
- 1 hour National Park Ranger guided Geikie Gorge Cruise
- Meals as indicated (B = breakfast, L = lunch, D = dinner)
- National park fees
- Return transfers from Broome accommodation

Departs: Thu from Broome at 7:30am (May – Oct)

Returns: 6:30pm

PRICE PER PERSON:	CAMPING	SAFARI CABIN	MOTEL
Adult twin share	\$525	\$625	\$675
Concession twin share	\$495	\$595	\$645
Child 4-12 years	\$425	\$525	\$575

Sole use prices for Safari Cabin and Motel options on application.

KIMBERLEY WILD EXPEDITIONS

KWEBME

Tours from Broome

BROOME

3 Day Cape Leveque Experience



HIGHLIGHTS:

- Cape Leveque ■ Bardi Bushtucker walk
- Pearl Farm Tour ■ Pearl Shell Church Altar Beagle Bay
- One Arm Point Aquaculture Hatchery

Day 1: Broome to Cape Leveque

The Dampier Peninsula is an extraordinary blend of pristine beaches and dramatic coastlines, rich in traditional Aboriginal culture. Travelling up the red dirt 4WD track, learn about the region's fascinating history en route to Beagle Bay Aboriginal Community, home of the Beagle Bay Church with its glimmering pearl shell altar. Journey on to enjoy lunch in the laidback Lombadina Community, a beautiful and welcoming community, which is home to an interesting bush timber church. Later travel to Cape Leveque and set up camp right on the edge of the Indian Ocean. A warm Kimberley sunset is a great way to end the day before a delicious Kimberley barbecue under the stars. (LD)

Day 2: Cape Leveque

Spend the morning exploring Cape Leveque at your leisure. Choose to join a guided snorkelling or fishing adventure, or simply enjoy the pristine beaches and rugged red coastline for which Cape Leveque is famous. Visit the Cygnet Bay Pearl Farm and learn about the iconic pearling business and take the opportunity to invest in a pearl direct from one of the world's most exclusive producers. (BLD)

Day 3: Cape Leveque to Broome

This morning an Aboriginal guide will take you on a guided bushwalk through Bardi country. Travel to the One Arm Point Community perched on the tip of the Dampier Peninsula. From here view the spectacular Buccaneer Archipelago and witness the large tidal flows of the Kimberley, the second biggest in the world. Visit the Community's aquaculture hatchery, complete with barramundi, pearl and trochus shell before returning south. Keep an eye out for wildlife on the drive back to Broome at dusk. (BL)

INCLUDES:

- 2 nights camping or cabin accommodation
- Use of snorkelling and fishing equipment
- Meals as indicated (B = breakfast, L = lunch, D = dinner)
- Return transfers from Broome accommodation

Departs: Sat from Broome at 7:30am (Apr – Oct)

Returns: 6:30pm



PRICE PER PERSON:	CAMPING	MINI DOME	FAMILY SAFARI CABIN
Adult twin share	\$725	\$800	\$1095
Concession twin share	\$695	\$750	\$1045
Child 4-12 years	\$625	\$700	\$995

Sole use prices for Mini Dome and Deluxe Safari Cabin options on application.

KIMBERLEY WILD EXPEDITIONS

KWEBME

4 Day West Kimberley Adventure



HIGHLIGHTS:

- Bell Gorge ■ Tunnel Creek
- Fitzroy Crossing ■ Windjana Gorge
- Geikie Gorge

Day 1: Broome to Mt Hart Homestead

Depart Broome and visit the fascinating Boab Prison Tree in Derby then travel along the Gibb River Road. The Gibb traverses the wild heart of the Kimberley, passing spectacular landscapes of intensely coloured ranges, dramatic gorges, deep rock pools and spectacular waterfalls. Stop at the Mowanjium Arts Centre for an insight into the local community of Indigenous artists. Stay the next two nights at Mt Hart Homestead. (LD)

Day 2: Bell Gorge

Travel on the Gibb River Road to Bell Gorge. Enjoy the afternoon exploring the spectacular scenery and swim below the refreshing waterfall. Head back to the Mt Hart Homestead to relax before dinner. (BLD)

Day 3: Windjana Gorge, Tunnel Creek and Fitzroy Crossing

Journey to Windjana Gorge where a short walk leads into the gorge. Walk along the sandy river banks and come across ancient marine fossils embedded in the gorge walls. Nearby at Tunnel Creek National Park, wade through the 750-metre-long tunnel which is carved through the Napier Range. Overnight at Fitzroy River Lodge. (BLD)

Day 4: Geikie Gorge

Enjoy a cruise between the striking bleached rock faces of Geikie Gorge, an ancient limestone barrier reef that was naturally formed about 350 million years ago. This afternoon, travel along the Great Northern Highway and arrive back in the township of Broome. (BL)

INCLUDES:

- 3 nights accommodation
- Geikie Gorge cruise
- Meals as indicated (B = breakfast, L = lunch, D = dinner)
- National park fees
- Return transfers from Broome accommodation

Departs: From Broome at 6am

- May 23
- Jun 4, 15, 19, 27
- Jul 18
- Aug 15
- Sep 5, 20, 29

Returns: 5:30pm

PRICE PER PERSON:

Adult twin share	\$1995
Adult sole use	\$2495
Child 4-14 years	\$1596

KIMBERLEY WILDERNESS ADVENTURES

KIMKNX

5 Day Bungle Bungles Experience



HIGHLIGHTS:

- Windjana Gorge ■ Tunnel Creek ■ Echidna Chasm
- Bungle Bungles ■ Cathedral Gorge
- Mimbi Caves ■ China Wall ■ Geikie Gorge cruise

Day 1: Broome to Fitzroy Crossing

The adventure begins travelling to Fitzroy Crossing. Visit Old Fitzroy Crossing before joining a guided Geikie Gorge cruise. Learn of the fascinating geology and discover the huge array of wildlife, including freshwater crocodiles, birds and fish. Camp by the Fitzroy River. (LD)

Day 2: Fitzroy Crossing to Purnululu National Park

Visit the gold rush town of Halls Creek and see the remarkable China Wall en route to Purnululu National Park, home of the magnificent Bungle Bungles. On arrival in Purnululu, settle into the private Bungle Bungle Safari Camp, built amidst the spectacular National Park surrounds. After a delightful bush sunset, relax with a delicious meal and evening under the stars. (BLD)

Day 3: Bungle Bungles

Spend the day exploring the highlights of this extraordinary national park, the most famous of which are the Bungle Bungle domes. Explore the two kilometre long Echidna Chasm, known for its towering Livistona Palm trees, and take a two to three kilometre walk into stunning Cathedral Gorge, where towering rocks create a natural amphitheatre. In the afternoon take an optional scenic flight over the domes (own expense). (BLD)

Day 4: Purnululu National Park to Fitzroy Crossing

Delve into Dreamtime with a local guide and learn of the secrets of the Mimbi Caves, a sanctuary of crystal clear pools, rare fossils and ancient rock art. Head to Fitzroy Crossing in the afternoon. Camp by the Fitzroy River. (BL)

Day 5: Windjana Gorge and Tunnel Creek to Broome

After an early start, discover Tunnel Creek, a 750 metre cave system with secret caves and a large variety of wildlife. Learn the legend of Jandamarra and freshen up with a swim in the waterhole at the end of the tunnel. Journey on to the geological wonder of Windjana Gorge and enjoy a picnic lunch. Travel along the Gibb River Road, via the Derby Boab Prison Tree, back to Broome. (BL)

INCLUDES:

- 2 nights camping or cabin accommodation
- 2 nights at Bungle Bungle Safari Camp
- Geikie Gorge cruise
- Mimbi Caves guided adventure
- National park fees
- Meals as indicated (B = breakfast, L = lunch, D = dinner)
- Return transfers from Broome accommodation

Departs: Tue from Broome at 7:30am (Apr – Oct)

Returns: 6:30pm



PRICE PER PERSON:	CAMPING	CAMPING PLUS
Adult twin share	\$1595	\$1840
Concession twin share	\$1545	\$1795
Child 4-12 years	\$1495	\$1740

Sole use price for Camping Plus option on application.

KIMBERLEY WILD EXPEDITIONS

KWEBME

5 Day Broome to the Bungle Bungles



HIGHLIGHTS:

- Gibb River Road
- Windjana Gorge
- Tunnel Creek
- Geikie Gorge
- Echidna Chasm
- Purnululu National Park
- Bungle Bungles
- Cathedral Gorge

Day 1: Broome to Fitzroy Crossing

Journey along the Gibb River Road to access some of the Kimberley's best scenery. Visit the sheer cliffs of Windjana Gorge and travel to remarkable Tunnel Creek, carved through the Napier Range.

Overnight at Fitzroy River Lodge, Fitzroy Crossing. (LD)

Day 2: Fitzroy Crossing to Purnululu National Park

Depart Fitzroy Crossing and head for one of Australia's most fascinating nature reserves – Purnululu National Park, home to the black and orange striped domes of the Bungle Bungle Range.

Two nights stay in tented cabins with private ensembles at Bungle Bungle Wilderness Lodge, Purnululu National Park. (BLD)

Day 3: Cathedral Gorge, Piccaninny Creek

Hike into Piccaninny Creek and Cathedral Gorge. Walk among the beehive domes and listen as your guide brings the natural history of the range to life. Learn of bushtucker, bush medicine and the area's significance to the Aborigines.

There is time for an optional helicopter flight (own expense). Enjoy drinks and watch the sun set over the domes. (BLD)

Day 4: Purnululu National Park to Halls Creek

After breakfast, hike into Echidna Chasm, a spectacular cleft in the rock massif. Travel the Great Northern



Highway to the historic gold mining town of Halls Creek. See the unusual China Wall, formed from quartz.

Overnight at Best Western Halls Creek Motel. (BLD)

Day 5: Halls Creek to Broome

Enjoy the morning on a unique cruise along stunning Geikie Gorge, where annual flooding has created a bleached effect on the limestone walls. Travel back to Broome where your tour concludes. (BL)

INCLUDES:

- 4 nights accommodation
- Geikie Gorge cruise
- Meals as indicated (B = breakfast, L = lunch, D = dinner)
- National park fees
- Maximum 20 guests
- Accommodation transfers on first and last day

Departs:

- From Broome at 6am
- May 14, 19, 26
- Jun 4, 10, 16, 24, 29
- Jul 10, 13, 21, 30
- Aug 4, 8, 29
- Sep 4, 10, 22

Returns:

Broome at 5:30pm



PRICE PER PERSON:

Adult twin share	\$2795
Adult sole use	\$3395
Child 4-14 years	\$2236

KIMBERLEY WILDERNESS ADVENTURES KIMKNX

8 Day Spirit of The Kimberley



HIGHLIGHTS:

- Cape Leveque ■ Geikie Gorge ■ Tunnel Creek
- Bungle Bungles ■ Windjana Gorge ■ Mimbi Caves

Day 1: Broome to Cape Leveque

Journey to the Dampier Peninsula along the red dirt 4WD track. Visit the Beagle Bay Church with its shimmering pearl shell altar. Journey on to enjoy lunch in the laidback Lombadina Community. Later travel to Cape Leveque and set up camp right on the edge of the Indian Ocean. (LD)

Day 2: Cape Leveque

Explore Cape Leveque at your leisure. Join a guided snorkelling tour or take up one of the many optional extras on offer including embarking on an indigenous sea kayaking adventure. In the afternoon, visit the Cygnet Bay Pearl Farm and learn about the iconic pearling business. (BLD)

Day 3: Cape Leveque to Broome

This morning take an Aboriginal guided bushwalk through Bardi country. Travel to the One Arm Point Community perched on the tip of the Dampier Peninsula. View the dramatic tidal flows of the Buccaneer Archipelago. In the afternoon travel back to Broome. Overnight in Broome. (BL)

Day 4: Broome to Fitzroy Crossing

Travel to the Kimberley and visit the Old Fitzroy Crossing before joining a local National Park Ranger on a guided cruise through majestic Geikie Gorge. Learn of the fascinating geology of this natural wonder. Camp by the Fitzroy River. (LD)

Day 5: Fitzroy Crossing to Purnululu National Park

Visit the gold rush town of Halls Creek and see the remarkable China Wall enroute to Purnululu National Park, home of the magnificent Bungle Bungles. On arrival in Purnululu, settle into the private Bungle Bungle Safari Camp. After a delightful bush sunset, relax with a delicious meal and evening under the stars. (BLD)



Day 6: Bungle Bungles

Spend the day exploring the highlights of Purnululu National Park, the most famous of which are the Bungle Bungle domes. Explore the two kilometre long Echidna Chasm and take a short walk into stunning Cathedral Gorge. In the afternoon take an optional scenic flight over the domes (own expense). (BLD)

Day 7: Purnululu National Park to Fitzroy Crossing

Travel to one of Western Australia's largest cave systems in the heart of Gooniyandi Country. Delve into Dreamtime with a local Gooniyandi guide and learn of the secrets of Mimbi Caves, a sanctuary of crystal clear pools and ancient rock art. Head to Fitzroy Crossing in the afternoon. Camp by the Fitzroy River. (BL)

Day 8: Windjana Gorge to Broome

After an early breakfast, discover Tunnel Creek, a 750 metre cave system with secret caves and a large variety of wildlife. Freshen up with a swim in the waterhole at the end of the tunnel before travelling to Windjana Gorge. Journey along the Gibb River Road, via the Derby Boab Prison Tree, back to Broome. (BL)

INCLUDES:

- 4 nights camping or cabin accommodation
- 1 nights hotel accommodation ■ 2 nights at Bungle Bungle Safari Camp ■ Meals as indicated (B = breakfast, L = lunch, D = dinner) ■ National park fees ■ Return transfers from Broome accommodation

Departs:

Sat from Broome at 7:30am (Apr – Oct)

Returns:

6:30pm



PRICE PER PERSON:

	CAMPING	CAMPING PLUS
Adult twin share	\$2395	\$2795
Concession twin share	\$2345	\$2745
Child 4-12 years	\$2295	\$2695

Sole use price for Camping Plus option on application.

KIMBERLEY WILD EXPEDITIONS KWEBME

Tours from Broome

9 Day El Questro, Gorges and Purnululu Adventure



HIGHLIGHTS:

- El Questro Wilderness Park ■ Gibb River Road
- Windjana Gorge ■ Geikie Gorge ■ Tunnel Creek
- Emma Gorge ■ Bungle Bungles ■ Ord River
- Fitzroy Crossing

Day 1: Broome to Bell Gorge

Depart Broome and spend time at the Boab Prison Tree then journey along the Gibb River Road to witness some of the Kimberley's stunning scenery. Travel to Tunnel Creek and wade through the cool waters to view the wonderful oasis beyond. At Windjana Gorge, see the ancient marine fossils embedded in the gorge walls and spot freshwater crocodiles lazing on the banks of the Lennard River. Spend the next two nights at Bell Gorge Wilderness Lodge. **(LD)**

Day 2: Bell Gorge

Back on the Gibb River Road, travel to Bell Gorge, where rugged cliffs surround a series of tiered waterholes. Take a swim beneath the waterfall, spot the fascinating birdlife, or take an energetic hike. **(BLD)**

Day 3: Bell Gorge to Home Valley

Travel through the heart of Kimberley cattle country to discover the beautifully secluded Galvans Gorge. Admire the rock art or indulge in a leisurely swim in the refreshing waters. Rejoin the Gibb River Road and continue on to Barnett River Gorge and enjoy a delicious picnic. After lunch, ford the mighty Durack River and arrive at Home Valley Station. Savour a glass of sparkling wine as the sun sets. Overnight at Home Valley Station. **(BLD)**

Day 4: Home Valley Station to El Questro Wilderness Park

Enjoy a fascinating tour of Home Valley Station before crossing the Pentecost River to El Questro Wilderness Park. Take an optional hike to Emma Gorge and marvel at the towering droplet waterfall. Overnight at Emma Gorge Resort. **(BLD)**

Day 5: El Questro to Kununurra

This morning join a guided cruise to Lake Kununurra and view the ruggedly dramatic landscape of the Ord River. Admire the breathtaking scenery, fascinating birdlife and lurking crocodiles. Overnight at Kununurra Country Club Resort. **(BLD)**

Day 6: Kununurra to Purnululu National Park

Today journey to Purnululu National Park. One of Australia's most fascinating landmarks, the park is home to the domes of the Bungle Bungle Range. Hike into Echidna Chasm, a spectacular cleft in the rock. Stay the next two nights at the Bungle Bungle Wilderness Lodge. **(BLD)**

Day 7: Piccaninny Creek and Cathedral Gorge

Spend the day discovering the beauty of the Bungle Bungles. Walk along Piccaninny Creek, a winding gorge within the high walls of the Bungle Bungle Range. Spend

time at Cathedral Gorge, a spacious cavern reaching skywards. **(BLD)**

Day 8: Purnululu National Park to Fitzroy Crossing

Travel to Halls Creek and see the unusual China Wall, a natural quartz formation that runs from a small creek over a gentle hill. Continue to Fitzroy Crossing, a small settlement situated on the Fitzroy River. Overnight at Fitzroy River Lodge. **(BLD)**

Day 9: Fitzroy River to Broome

Journey into Geikie Gorge National Park this morning. Explore Geikie Gorge, situated at the junction of the Oscar and Geikie Ranges. Board a unique cruise along the stunning gorge and learn more about the beautiful flora and fauna of this spectacular region. After lunch, return to Broome. **(BL)**

INCLUDES:

- 8 nights accommodation
- Geikie Gorge cruise
- Ord River cruise
- Meals as indicated (B= breakfast, L = lunch, D = dinner)
- National park fees
- Return transfers from Broome accommodation

Departs:

- From Broome at 6am
- May 9, 19, 27, 30
- Jun 4, 11, 16, 21, 23, 28*
- Jul 2, 6, 8, 14, 22, 25, 27
- Aug 5, 11, 18*, 26
- Sep 5, 10, 21

Returns:

5:30pm

PRICE PER PERSON:

Adult twin share	\$5295
Adult sole use	\$6495
Child 4-14 years	\$4236

* Tour operates in reverse direction.

KIMBERLEY WILDERNESS ADVENTURES

KIMKNX

9 Day Wild Kimberley Loop



HIGHLIGHTS:

- Gibb River Road ■ Windjana Gorge ■ Tunnel Creek
- Bell Gorge ■ Manning Falls ■ El Questro Wilderness Park
- Lake Argyle ■ Bungle Bungles ■ Geikie Gorge cruise

Day 1: Broome to Windjana Gorge

Begin your adventure and travel through the remote and stunning landscape before enjoying morning tea by the Fitzroy River. Visit the famous Boab Prison Tree and travel along the Gibb River Road towards the Napier Range. Continue on to Windjana Gorge before spending the afternoon exploring Tunnel Creek. Camp at Windjana Gorge. **(LD)**

Day 2: Windjana Gorge to Mt Barnett Station

The morning is devoted to exploring Bell Gorge. This idyllic retreat, boasts cascading waterfalls and crystal clear pools. Travel up the Gibb River Road to Mt Barnett Cattle Station. Camp by a billabong for the night. **(BLD)**

Day 3: Mt Barnett Station to El Questro Wilderness Park

A morning trek into Manning Falls offers the chance to swim in deep clear pools amid a stunning natural landscape. Relax, explore wandering streams, uncover local wildlife and take a dip in the waterfall pools before the journey up the Gibb River Road to the iconic El Questro Wilderness Park. Spend the next two nights camping at El Questro Wilderness Park. **(BLD)**

Day 4: El Questro Wilderness Park

A full day to enjoy the activities on offer at El Questro Wilderness Park. **(BL)**

Day 5: El Questro Wilderness Park to Lake Argyle

Head to Kununurra where the morning is at leisure before travelling to the shores of Lake Argyle. Enjoy the afternoon on a sunset cruise on the lake (own expense), visit the historic Durack Homestead or explore one of the many bush trails. Camp at Lake Argyle. **(B)**

Day 6 and 7: Lake Argyle to Purnululu National Park

Travel back to Kununurra for lunch before heading down

the Great Northern Highway to Purnululu National Park, home of the magnificent Bungle Bungles. Discover the two kilometre Echidna Chasm, and take a short walk into stunning Cathedral Gorge. Experience a scenic flight over the unique landscape (own expense). Spend the next two nights at the private Bungle Bungle Safari Camp. **(BLD)**

Day 8: Bungle Bungles to Fitzroy Crossing

Depart Purnululu National Park and travel to the gold rush town of Halls Creek. Enjoy lunch at Marys Pool and visit Laarri Aboriginal Art Gallery. Camp at Fitzroy Crossing. **(BL)**

Day 9: Fitzroy Crossing to Broome

Start the day with a cruise through the majestic Geikie Gorge. Learn of the fascinating geology and witness the abundant wildlife including freshwater crocodiles, birds and fish. Stop at Old Fitzroy Crossing and enjoy lunch by the river before returning to Broome. **(BL)**

INCLUDES:

- 6 nights camping
- 2 nights at Bungle Bungle Safari Camp
- Geikie Gorge cruise
- Meals as indicated (B = breakfast, L = lunch, D = dinner)
- National park fees
- Return transfers from Broome accommodation

Departs:

- From Broome at 7am
- Tue (May – Oct), Sun on request (May – Oct)

Returns:

6:30pm



PRICE PER PERSON:

	CAMPING	CAMPING PLUS
Adult twin share	\$2395	\$2995
Concession twin share	\$2345	\$2945
Child 4-12 years	\$2295	\$2895

Camping Plus includes a combination of camping and Safari tent accommodation. Sole use price for Camping Plus option on application.

KIMBERLEY WILD EXPEDITIONS

KWEBME

10 Day Kimberley Trail



HIGHLIGHTS:

- Gibb River Road ■ Windjana Gorge ■ Tunnel Creek
- El Questro Wilderness Park ■ Bungle Bungles
- Cathedral Gorge ■ Katherine ■ Nitmiluk Gorge

Day 1: Broome to Windjana Gorge

Travel via Derby visiting the infamous Boab Prison Tree. Continue on to Windjana Gorge and spend time searching for freshwater crocodiles, local birdlife and indigenous bush tucker in this stunning outback oasis. After lunch explore Tunnel Creek and take a refreshing swim in an idyllic waterhole. Camp at Windjana Gorge. (LD)

Day 2: Windjana Gorge to Mt Barnett Station

The morning is devoted to exploring Bell Gorge, a hidden highlight of the West Kimberleys. This idyllic retreat, boasts cascading waterfalls and crystal clear pools formed over millions of years. An afternoon trek into Manning Falls offers the chance to swim in deep clear pools amid a stunning natural landscape. Camp by a billabong on Mt Barnett Station. (BLD)

Day 3: El Questro Wilderness Park

Continue the journey up the Gibb River Road to the iconic El Questro Wilderness Park. Spend the next two nights camping at El Questro Wilderness Park. (BLD)

Day 4: El Questro Wilderness Park

Enjoy a full day discovering the beauty of El Questro Wilderness Park at your own leisure. Take a refreshing dip in the Zebedee Springs or a trek into El Questro Gorge. (BL)

Day 5: Purnululu National Park

After a delicious breakfast, travel along the Great Northern Highway to Purnululu National Park, home of the magnificent Bungle Bungles. Spend the next two nights at Bungle Bungles Safari Camp. (BD)

Day 6: Purnululu National Park

Explore the highlights of this extraordinary National Park, the most famous of which, are the Bungle Bungle domes. Rivers created this landscape of unique orange and black

striped beehive geological formations over a period of 20 million years. Spend time at the Echidna Chasm, known for its towering Livistonia Palm trees and take a short walk into stunning Cathedral Gorge, where towering rocks create a natural amphitheatre. (BLD)

Day 7: Purnululu National Park to Kununurra

Travel north to Kununurra, the heart of the east Kimberley. Spend the next two nights camping in Kununurra. (BL)

Day 8: Kununurra

Spend the day at leisure and take in the many sights this outback town has to offer. (BD)

Day 9: Kununurra to Katherine

Continue east along the Victoria Highway and cross the border into the Northern Territory and travel to the outback town of Katherine, home to the spectacular Nitmiluk Gorge. Camp overnight. (BLD)

Day 10: Katherine to Darwin

After breakfast, join a cruise through Nitmiluk Gorge and discover the customs of the traditional land owners, the Jawoyn people. After the cruise, enjoy a dip in Edith Falls then travel onto Darwin. (BL)

INCLUDES:

- 9 nights accommodation
- Meals as indicated (B = breakfast, L = lunch, D = dinner)
- National park fees
- Transfers in Broome and Darwin

Departs: From Broome at 7am
 • Apr 28 • May 5, 26 • Jun 2, 23, 30
 • Jul 21, 28 • Aug 18, 25

Returns: Darwin at 6pm

PRICE PER PERSON:	CAMPING	CAMPING PLUS
Adult twin share	\$2695	\$3495
Concession twin share	\$2645	\$3445
Child 4-12 years	\$2595	\$3395

KIMBERLEY WILD EXPEDITIONS

KWEBME

12 Day Kimberley Explorer



HIGHLIGHTS:

- Cape Leveque ■ Gibb River Road
- Windjana Gorge ■ Bell Gorge ■ Tunnel Creek
- Lake Argyle ■ Bungle Bungles

Day 1: Broome to Cape Leveque

Depart Broome and journey to The Dampier Peninsula, a blend of pristine beaches and dramatic coastlines. Continue on to Cape Leveque and set up camp right on the edge of the Indian Ocean. (LD)

Day 2: Cape Leveque

Spend the day exploring the pristine beaches and rugged red coastline for which Cape Leveque is famous. Visit the Cygnet Bay Pearl Farm and learn about the iconic pearling business. (BLD)

Day 3: Cape Leveque to Broome

This morning, take an Aboriginal guided bushwalk and learn about indigenous bush tucker, lifestyle and culture. View the Buccaneer Archipelago and witness the extreme tidal flows of the Kimberley. Look out for wildlife on the drive back to Broome. Overnight in Broome. (BL)

Day 4: Broome to Windjana Gorge

Travel via Derby visiting the infamous Boab Prison Tree. Continue on to Windjana Gorge, with its sheer cliffs and look for freshwater crocodiles and local birdlife. After lunch explore Tunnel Creek. Camp at Windjana Gorge. (LD)

Day 5: Windjana Gorge to Mt Barnett Cattle Station

Spend the morning exploring Bell Gorge. Travel further along the Gibb River Road to Mt Barnett Cattle Station. Camp by a billabong on Mt Barnett Station. (BLD)

Day 6: Mt Barnett Station to El Questro Wilderness Park

A morning trek into Manning Falls and swim in deep clear pools. Continue the journey up the Gibb River Road to the iconic El Questro Wilderness Park. Spend the next two nights camping at El Questro Wilderness Park. (BLD)

Day 7: El Questro Wilderness Park

A full day to enjoy the activities on offer at El Questro Wilderness Park. (BL)

Day 8: El Questro Wilderness Park to Lake Argyle

Continue the journey to Kununurra. Depart Kununurra for Lake Argyle, enjoy a spectacular sunset cruise on the lake. Camp at Lake Argyle. (B)

Day 9 and 10: Lake Argyle to Purnululu

Journey down the Great Northern Highway to Purnululu National Park, home of the magnificent Bungle Bungles. Spend the next two nights at the private Bungle Bungle Safari Camp. (BLD)

Day 11: Bungle Bungles to Fitzroy Crossing

Travel to the gold rush town of Halls Creek to see the China Wall. Enjoy lunch at Marys Pool. Camp at Fitzroy Crossing. (BL)

Day 12: Fitzroy Crossing to Broome

Start the day with a morning cruise through the majestic Geikie Gorge. Explore Old Fitzroy Crossing and enjoy lunch by the river before returning to Broome. (BL)

INCLUDES:

- 11 nights accommodation
- Meals as indicated (B = breakfast, L = lunch, D = dinner)
- National park fees
- Return transfers from Broome accommodation

Departs: Sat from Broome at 6:30am (May – Oct)

Returns: 6:30pm



PRICE PER PERSON:	CAMPING	CAMPING PLUS
Adult twin share	\$3195	\$3695
Concession twin share	\$3145	\$3645
Child 4-12 years	\$3095	\$3595

Camping Plus includes a combination of camping, Safari tent and hotel accommodation. Sole use price for Camping Plus option on application.

KIMBERLEY WILD EXPEDITIONS

KWEBME

Tours from Broome

15 Day Kimberley Complete

**HIGHLIGHTS:**

- Gibb River Road ■ Bungle Bungles
- El Questro Wilderness Park ■ Ord River
- Mitchell Falls helicopter flight

Day 1: Broome

Arrive in Broome and transfer to your hotel. Enjoy a welcome dinner and meet your fellow travellers and guide. Overnight at Cable Beach Club Resort and Spa. **(D)**

Day 2: Broome to Bell Gorge

Visit the Boab Prison Tree before joining the Gibb River Road to Windjana Gorge. Continue on to Tunnel Creek, and with torch in hand, wade through the cool waters to view the oasis. Enjoy two nights at Bell Gorge Wilderness Lodge. **(BLD)**

Day 3: Bell Gorge

Travel to Bell Gorge, where rugged cliffs surround a series of tiered waterholes. Take a relaxing dip below the cascading waterfall that feeds the lower pool and then go birdwatching. **(BLD)**

Day 4: Bell Gorge to Drysdale River Station

Travel to Galvans Gorge and view rock art on the gorge walls and take a leisurely swim. Turning off the Gibb River Road, travel north on the Kalumburu Road, heading towards the isolated Mitchell Plateau. Overnight at Drysdale River Station. **(BLD)**

Day 5: Drysdale River Station to Mitchell Falls

Ascending the Mitchell Plateau, explore Wandjina and Gwion art galleries and swim in the clear waters at King Edward River Crossing. Spend two nights at Mitchell Falls Wilderness Lodge. **(BLD)**

Day 6: Mitchell Falls Enjoy a full day discovering the beauty of Mitchell Falls, with its magnificent waterfalls and Indigenous art. A highlight of the day is a scenic helicopter flight over Mitchell Falls. **(BLD)**

Day 7: Mitchell Plateau to Home Valley Station

Rejoin the Gibb River Road and cross the mighty Durack River before arriving at Home Valley Station, an immense cattle property. Overnight at Home Valley Station. **(BLD)**

Day 8: Home Valley Station to El Questro Wilderness Park

This morning gain an insight into the operation of a working cattle station on the Home Valley Station tour. Later, cross the Pentecost River into El Questro Wilderness Park, covering a staggering one million acres. Overnight at El Questro, Emma Gorge Resort. **(BLD)**

Day 9: El Questro to Kununurra

Soak in the delectable hot pools of Zebedee Springs and visit the station township. Head to Wyndham and view Cambridge Gulf from the Five Rivers Lookout. Stay the next two nights at Kununurra Country Club Resort. **(BLD)**

Day 10: Ord River and Lake Kununurra

Soak the morning exploring Kununurra before travelling to Lake Argyle. Join a spectacular wildlife cruise on the mighty Ord River. Enjoy a mesmerising sunset while cruising on the tranquil Lake Kununurra. **(B)**

Day 11: Kununurra to Purnululu National Park

Depart Kununurra and journey to Purnululu National Park, one of Australia's most stunning natural landscapes. Hike into Echidna Chasm, a spectacular cleft in the rock massif. Stay the next two nights at Bungle Bungle Wilderness Lodge. **(BLD)**

Day 12: Purnululu National Park

After breakfast hike into Piccaninny Creek and spectacular Cathedral Gorge. There's also time for an optional helicopter flight (own expense). **(BLD)**

Day 13: Halls Creek to Fitzroy Crossing

Head to Halls Creek and admire the unusual China Wall. Continue on towards Fitzroy Crossing, a small settlement situated on the Fitzroy River. Overnight at Fitzroy River Lodge. **(BLD)**

Day 14: Geikie Gorge to Broome

Travel to Geikie Gorge National Park and explore magnificent Geikie Gorge. Board a unique cruise before returning to Broome. Overnight at Cable Beach Club Resort and Spa. **(BLD)**

Day 15: Broome Your tour ends after breakfast. **(B)****INCLUDES:**

- 14 nights accommodation ■ Ord River cruise
- Mitchell Falls helicopter flights
- Meals as indicated (B = breakfast, L = lunch, D = dinner) ■ National park fees
- Return transfers from Broome airport

Departs: Most days from Broome at 6:30pm (29 Apr – 25 Sep 14)

Returns: 10am

PRICE PER PERSON:

Adult twin share	\$8795
Adult sole use	\$10895
Child 4 - 14 years	\$7036

Tour operates in reverse direction.

KIMBERLEY WILDERNESS ADVENTURES KIMKNX

17 Day Kimberley, Kakadu and Arnhem Land Explorer

**HIGHLIGHTS:**

- Geikie Gorge ■ Tunnel Creek
- Mitchell Falls Helicopter flight ■ Bungle Bungle Range
- Kakadu National Park ■ Gulyambi cruise
- Yellow Water Billabong wildlife cruise

Day 1: Broome Arrive in Broome and be transferred to your hotel. Spend the evening at a Welcome Dinner and meet your fellow travellers. Overnight at Cable Beach Club Resort & Spa. **(D)**

Day 2: Broome to Fitzroy Crossing Depart Broome and travel to Fitzroy Crossing. In the afternoon cruise spectacular Geikie Gorge. Overnight at Fitzroy River Lodge, Fitzroy Crossing. **(BLD)**

Day 3: Fitzroy Crossing to Bell Gorge Travel to Tunnel Creek and view the oasis. Later in the day, arrive at Windjana Gorge. Continue the journey on the famous outback highway, the Gibb River Road. Enjoy two nights at Bell Gorge Wilderness Lodge, with private ensuite. **(BLD)**

Day 4: Bell Gorge Back on the Gibb River Road, travel to Bell Gorge. Enjoy a swim below the waterfall or choose from a number of hiking opportunities. **(BLD)**

Day 5: Bell Gorge to Drysdale River Station Travel through Kimberley cattle country, discovering secluded gorges. At Galvans Gorge, a short walk leads to a picturesque waterhole. At Barnett River Gorge enjoy lunch under the gum trees. Overnight at Drysdale River Station. **(BLD)**

Day 6: Drysdale River Station to Mitchell Plateau Today explore Wandjina and Gwion rock art galleries. Continue to the Mitchell Plateau. Accommodation for two nights at Mitchell Falls Wilderness Lodge. **(BLD)**

Day 7: Mitchell Falls Start the day with a hike to Little Mertens Falls to view rare Aboriginal art. Continue on to Big Mertens Falls before arriving at Mitchell Falls. Take a helicopter flight over Mitchell Falls back to the vehicle, or alternatively hike back. **(BLD)**

Day 8: Mitchell Plateau to El Questro Wilderness Park Leaving the magnificent Mitchell Plateau, rejoin the Gibb River Road and travel to El Questro. Accommodation for two nights at Emma Gorge Resort, El Questro. **(BLD)**

Day 9: El Questro This morning, walk to beautiful Zebedee Springs. Then, with a local ranger, cruise Chamberlain Gorge, before hiking into Emma Gorge. **(BLD)**

Day 10: El Questro to Purnululu National Park Journey to Purnululu National Park. Travel the Spring Creek Track into the Bungle Bungle Range and hike into Echidna Chasm. Accommodation for the next two nights is at Bungle Bungle Wilderness Lodge, Purnululu National Park. **(BLD)**

Day 11: Purnululu National Park Today hike along Piccaninny Creek and explore Cathedral Gorge. **(BLD)**

Day 12: Purnululu National Park to Kununurra Travel to Kununurra, home of the Ord River Scheme. Overnight at Kununurra Country Club Resort. **(BLD)**

Day 13: Kununurra to Katherine Depart Kununurra and cross the border into the Northern Territory on the way to Nitmiluk National Park. Step aboard the Nabilli Dreaming Sunset Cultural Cruise. Overnight at Cicada Lodge. **(BD)**

Day 14: Katherine to Kakadu National Park Travel into Kakadu, the Northern Territory's best known national park. Board a guided cruise along Kakadu's Yellow Water Billabong then travel to Nourlangie Rock to view Aboriginal rock art. Stay the next two nights at Hawk Dreaming Wilderness Lodge. **(BLD)**

Day 15: Arnhem Land Accompanied by a local guide, cross the East Alligator River into Arnhem Land. This afternoon return to Kakadu. **(BLD)**

Day 16: Kakadu National Park to Darwin Cruise along the East Alligator River on the Gulyambi Cruise. Travel to Ubirr to explore galleries of rock art before travelling to Darwin. Overnight at Mantra Pandanas. **(BLD)**

Day 17: Darwin Your tour ends after breakfast. **(B)**

INCLUDES:

- 16 nights accommodation with private ensuite
- Mitchell Falls helicopter flight
- Meals as indicated (B = breakfast, L = lunch, D = dinner)
- Transfers in Broome and Darwin

Departs: From Broome at 6:30pm
 • May 20, 21*, 23 • Jun 6, 7*, 13*, 18, 29*
 • Jul 5*, 8, 16, 18*, 22, 29*
 • Aug 6, 8*, 13, 15*, 17*, 19, 23*, 26, 29*
 • Sep 2*, 5*, 10, 11*, 16*

Returns: 10am

PRICE PER PERSON:

Adult twin share	\$9995
Adult sole use	\$12345
Child 4 - 14 years	\$7996

* Tour operates in reverse direction.

KIMBERLEY WILDERNESS ADVENTURES KIMKNX

