

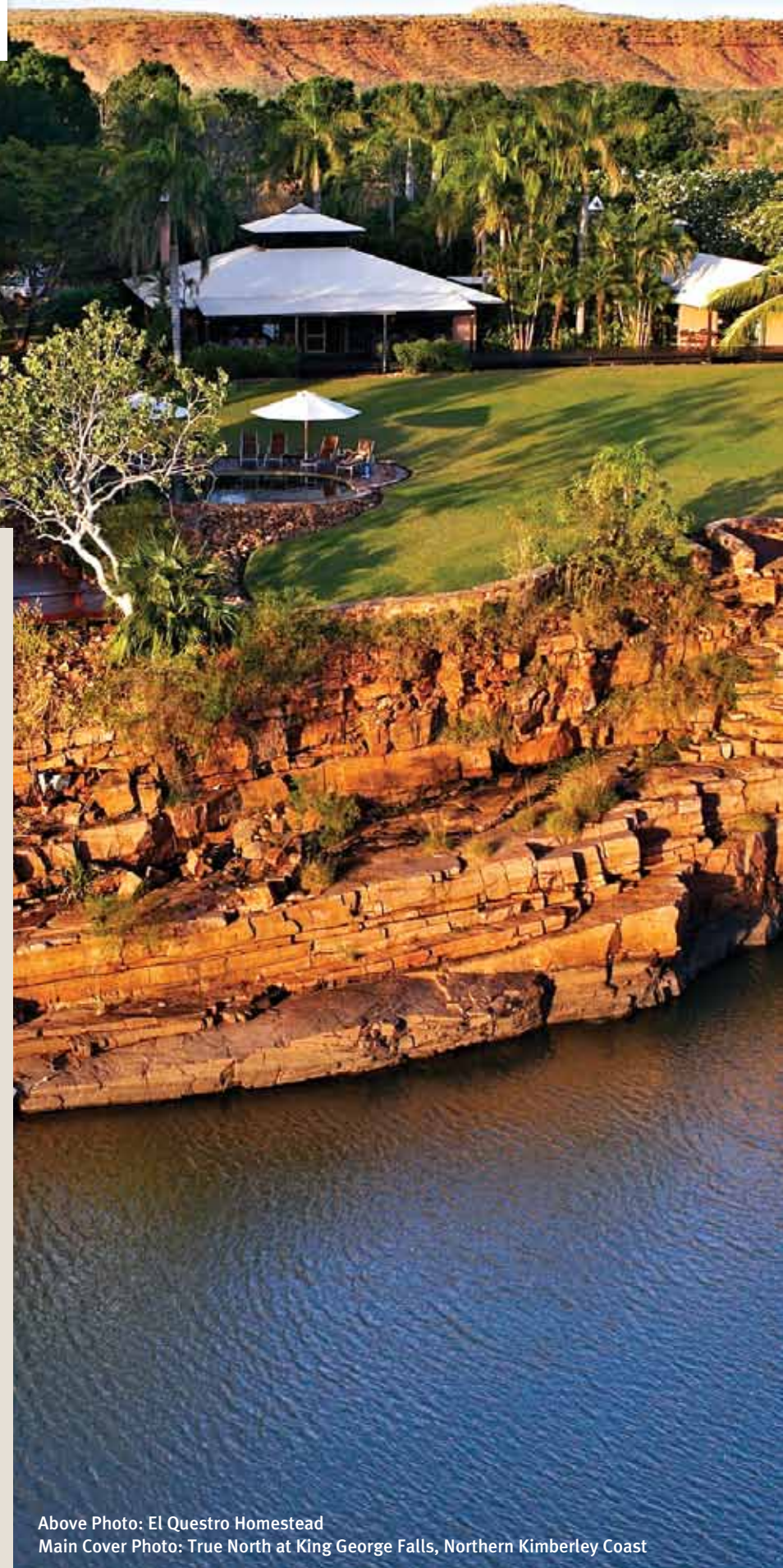
2014/15



KIMBERLEY CRUISING & BROOME



For the best times of your life!



Purnululu National Park – Bungle Bungles

Cruise The Kimberley and see Broome – the Sunlover Holidays way!

For over 30 years, Sunlover Holidays has been crafting holidays for families, for couples, for friends and for adventurers right around Australia. From Cape York to Kangaroo Island, from the Gold Coast to Margaret River, from the Kimberley to Bruny Island, and everywhere in between our travel experts are here to design and book your ideal Aussie holiday.

Our 14 Sunlover Holidays brochures have something to suit all tastes and budgets and are the perfect planning tool for your family holiday, romantic getaway, self drive adventure or island escape.

Inside you'll find our 'Essential Experiences' with 'Must Do' activities plus 'Our Local Secrets' section designed to enhance your holiday experience. Our new Free Wi-Fi feature makes it easy to stay connected on holiday, just look for the properties displaying the Free Wi-Fi symbol.

We have a huge range of stay/pay specials to make your holiday dollar go further as well as a fabulous selection of value add offers which are listed throughout the brochure.

Use this brochure for inspiration, then let our travel experts assist you to experience Australia your way – happy travelling!

Andrew Burnes
CEO, Sunlover Holidays

Above Photo: El Questro Homestead

Main Cover Photo: True North at King George Falls, Northern Kimberley Coast



Contents

Planning Your Holiday	4
Discover The Kimberley and Broome	6
Essential Experiences	8
Travel Tips	9
Kimberley Cruising	10
Coral Princess Cruises	12
The Great Escape Charter Company	14
Kimberley Quest	16
North Star Cruises Australia – True North	18
Holiday Packages	20
Self Drive Holidays	22
Broome	24
Kununurra	37
Kimberley Stations and Wilderness Camps	41
Fitzroy Crossing and Halls Creek	46
Exploring The Kimberley and Broome	47
Car Hire	47
Campervan Hire	49
Accommodation Index	50
Important Booking Conditions	51



Planning your Holiday

The information on the following pages is designed to help you plan your dream getaway. Discover the Kimberley and Broome and check out local events on page 6. We've detailed our Essential Experiences on page 8 and share 'Our Local Secrets' on page 9 as well as other Travel Tips for planning your perfect holiday.

The Sunlover Holidays Difference

Fantastic prices, a diverse range of Australian holiday destinations, the widest choice of products and unmatched service, combined with over 30 years experience – that's the Sunlover Holidays difference!

We're committed to offering an extensive range of holiday options and our team of product experts regularly travel throughout Australia to bring you the very best holiday experiences. They are passionate about Australia and personally select each product, providing you with the greatest choice at the most competitive price.

Our team of friendly travel experts are here to help, offering advice and information. They can tailor-make your dream holiday from hundreds of fantastic hotels, apartments and resorts as well as flights, cruises, car and campervan hire, extended touring, self-drive holidays and a huge range of sightseeing tours and attractions.

100% Australian Owned

Sunlover Holidays is a division of The AOT Group, one of Australia's largest travel companies. We are 100%

Australian owned and proud to employ over 300 staff located in our offices in Melbourne, Sydney and Brisbane. A booking with Sunlover Holidays ensures your dollar stays in Australia and helps generate jobs for Australians!

24 Hour Service

We know your holiday experience doesn't end until you are safely home. That's why our Customer Care Team is only a phone call away 24 hours a day, seven days a week, should you require any assistance during your Sunlover holiday. All the necessary information will be provided with your travel documentation and you can contact the team at any time during your holiday. We're with you on the journey.

Offering You Value for Money

Throughout this brochure you'll find amazing offers including free nights, room upgrades and food and beverage credits to name a few. Just look for the 'Bonus Offer' box.

We have also put together some fabulous Holiday Packages starting on page 20, which offer exceptional value for money. These packages include a choice of accommodation

options to suit all budgets together with 'must do' tours and attractions, exclusive to Sunlover Holidays.

Our product team is always sourcing special deals throughout the year, so make sure you ask your travel agent for the latest Sunlover Holidays specials when making your booking.

Exclusively For You

We're always on the look out for ways to enhance your holiday experience. Throughout this brochure, you'll find deals marked **Exclusively For You**. These are free bonus offers exclusive to Sunlover Holidays customers.

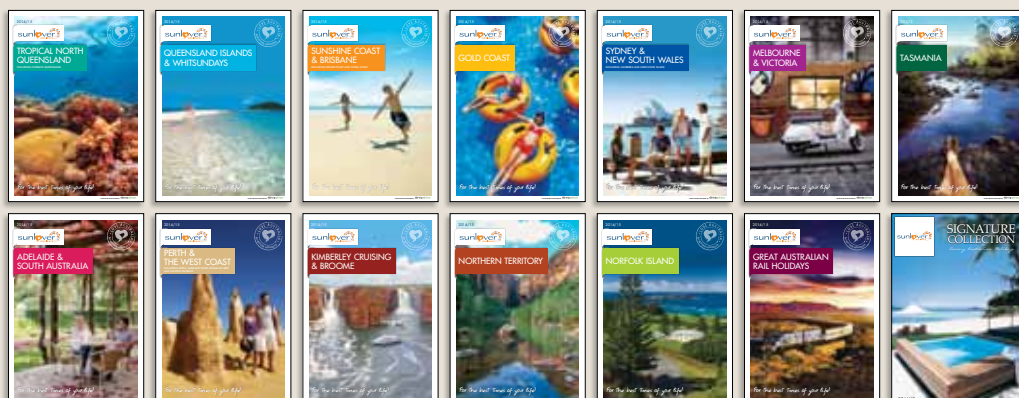
TripAdvisor



This brochure is a great source of advice and has all the information you'll need to create your dream holiday. We are now partnering with TripAdvisor to offer you (where available) hotel reviews. TripAdvisor rates real travellers' experiences, giving you an unbiased and impartial point of view on the product we feature to assist you with your holiday planning. TripAdvisor ratings and reviews are available to view on our website at www.sunloverholidays.com.au.

LET SUNLOVER HOLIDAYS
INSPIRE YOU
TO **DISCOVER**
MORE OF THIS
INCREDIBLE
COUNTRY

ASK YOUR TRAVEL AGENT
FOR ONE OF OUR MANY BROCHURES





True North at the King George Falls, North Kimberley Coast

Pricing Guide

Prices featured in accommodation listings are per room for the period specified unless otherwise stated. The "from" price in the property heading has been calculated using the cheapest nightly rate available, ie. in the lead-in room type, in off-peak season using the longest stay (eg. 7 nights). If a free night offer is available, even if for part of a season, this has been included when calculating the "from" price.

A minimum stay is generally required. Where prices for more than a one night stay are featured, the prices refer to stays of consecutive nights.

School Holidays

Queensland	5 – 21 Apr, 28 Jun – 13 Jul, 20 Sep – 6 Oct, 13 Dec 14 – 26 Jan 15
New South Wales	12 – 27 Apr, 28 Jun – 13 Jul, 20 Sep – 6 Oct, 20 Dec 14 – 26 Jan 15
Victoria	5 – 21 Apr, 28 Jun – 13 Jul, 20 Sep – 5 Oct, 20 Dec 14 – 28 Jan 15
ACT	12 – 27 Apr, 5 – 20 Jul, 27 Sep – 12 Oct, 18 Dec 14 – 29 Jan 15
Tasmania	18 Apr – 4 May, 5 – 20 Jul, 27 Sep – 12 Oct, 19 Dec 14 – 3 Feb 15
South Australia	12 – 27 Apr, 5 – 20 Jul, 27 Sep – 12 Oct, 13 Dec 14 – 26 Jan 15
Western Australia	12 – 27 Apr, 5 – 20 Jul, 27 Sep – 12 Oct, 19 Dec 14 – 1 Feb 15
Northern Territory	7 – 11 Apr, 23 Jun – 18 Jul, 29 Sep – 3 Oct, 13 Dec 14 – 26 Jan 15
New Zealand	18 Apr – 4 May, 5 – 20 Jul, 27 Sep – 12 Oct, 20 Dec 14 – 26 Jan 15

Accommodation Ratings

STAR and Diamond ratings are used throughout the brochure to describe the standard of accommodation.

STAR RATINGS Properties featuring the STAR symbols are independently assessed by AAA Tourism, the national tourism body of the Australian Auto Clubs. The STARS and the STAR Rating Scheme are a Registered Trademark of AAA Tourism Pty Ltd. We have no input into the assessment process.

DIAMOND RATINGS Properties featuring Diamond symbols do not participate in a recognised rating scheme. The rating is supplied by the individual property based on their own assessment. We recommend they be used as a guide only.

★★★
◆◆◆ Comfortable standard of accommodation

★★★★
◆◆◆◆ High standard of accommodation and facilities

★★★★★
◆◆◆◆◆ Superior standard of accommodation and facilities

☆
◇ Denotes additional half rating

Apartment Style Accommodation

In general, self catering apartments feature cooking facilities with a minimum of microwave, hot plates, saucepans, crockery, cutlery and cooking utensils. Laundry facilities will be located either in the apartment, or in a guest laundry within the property. Most apartments are serviced every 7 days and do not provide hotel facilities such as portage, room service or mini bars. Most apartments provide an initial supply of items such as tea, coffee, toilet paper and soap.

What the Symbols mean



The property has Free Wi-Fi available in the room/apartment. Free Wi-Fi may or may not be available in public areas. Please refer to the Property Features in the individual accommodation listing for further details.



Day spa facilities are available.



The property has one or more rooms providing wheelchair access with assistance.



A bonus is available if you are celebrating a special occasion (eg. honeymoon). Advise your travel agent when booking. The definition of 'special occasion' and type of bonus offered is at each property's discretion. Conditions may apply.



Eco-Friendly STAR Accreditation certified by AAA Tourism to properties that have met key criteria in areas of energy efficiency, waste management and water minimisation.



Product that has been accredited under the second level of the national Ecotourism Certification scheme.



Product that has been awarded the highest level of the national Ecotourism Certification scheme.



Camping or cabin style accommodation is featured. Facilities vary – some camp grounds will have shower and toilet facilities, while more remote sites have limited facilities – e.g. a swim and a bush toilet.

Room Images

Room images featured on property listings are the lead-in room type, unless captioned otherwise.



Cable Beach



Berkeley River

Discover The Kimberley & Broome

Calendar of Events

APRIL

Staircase to the Moon, Broome 16th Apr-10th Oct

MAY

Lake Argyle Classic Swim 3rd

Ord Valley Muster, Kununurra 16th-25th

Broome Polo 24th-25th

Kimberley Moon Experience, Kununurra 24th

JULY

Kimberley Writers Festival, Kununurra TBC

AUGUST

Kimberley Cup, Broome 2nd

Broome Cup 16th

Opera Under the Stars, Broome 30th

SEPTEMBER

Shinju Matsuri Festival of the Pearl, Broome 5th -14th

BROOME STAIRCASE TO THE MOON

April	16th	6:28pm
	17th	7:17pm
	18th	8:10pm
May	15th	6pm
	16th	6:56pm
	17th	7:56pm
June	13th	5:41pm
	14th	6:43pm
	15th	7:46pm
July	13th	6:31pm
	14th	7:35pm
August	11th	6:18pm
	12th	7:21pm
September	9th	6:02pm
	10th	7:03pm
	11th	8:03pm
October	9th	6:44pm
	10th	7:43pm

TBC – Dates for this event were yet to be confirmed at the time of printing.

Kimberley Cruising

There's so much untouched wilderness to discover in the Kimberley region and the coastline is no exception. What better way to explore this pristine environment than with an extended cruise. Explore parts of the Kimberley only a fortunate few have seen. It's the ultimate Kimberley adventure.

Explore Kimberley waterways like the Sale, Prince Regent, King George and Hunter Rivers. Witness amazing tidal movements at Horizontal Falls and Montgomery Reef. See 20,000 year old Wandjina and Bradshaw rock art, swim in rockpools, fish for barramundi or catch a mud crab. You'll find secluded beaches and sections of rainforest bounded by clear water in the Buccaneer Archipelago, a group of around 1,000 islands northwest of Derby.

Beyond the coastline, 300 kilometres west of Broome, an underwater paradise awaits. The coral atolls at Rowley Shoals Marine Park offer spectacular snorkelling and diving, as well as big game fishing in the surrounding waters.

Broome

Broome has so much to offer, whether it's natural attractions or just a place to relax and enjoy warm sunny days and balmy nights. Breathtaking beaches, a fascinating history as a pearling port and a laidback and multicultural atmosphere are major drawcards.

One of the main attractions is Cable Beach, a 22 kilometre stretch of pristine sand leading to the warm azure waters of the Indian Ocean. Go for a swim, sail on a Pearl Lugger or go fishing, and at the end of the day, sit back and watch a magnificent Broome sunset. Discover Broome's history with a visit to Sun Pictures open air cinema or on a walk through Chinatown.

From March to October each year witness the natural phenomenon known as Staircase to the Moon.

Kununurra and The East Kimberley

Located on the banks of Lake Kununurra and the Ord River, Kununurra is the eastern gateway to some of the best known attractions of the Kimberley. It's the perfect

base to explore World Heritage Purnululu National Park and the Bungle Bungle Range. Take a scenic flight over the magical beehive domes of the Bungle Bungle Range or Lake Argyle, the biggest man-made lake in Australia – so large it's considered an inland sea. Tour the Argyle Diamond Mine, the largest open-cut diamond mine in the world. Then be sure to buy a pink Argyle diamond from the showrooms in Kununurra.

Also accessible from Kununurra are a number of stations and wilderness camps along the Gibb River Road, including El Questro Wilderness Park and Home Valley Station.

Fitzroy Crossing and Halls Creek

Heading along the Great Northern Highway, Fitzroy Crossing is a true outback town on the banks of the Fitzroy River. It's a great base to explore Windjana Gorge and Tunnel Creek National Parks. It's also a gateway to Geikie Gorge National Park, a spectacular waterway with soaring, weathered cliffs and abundant wildlife.

Halls Creek, on the edge of the Great Sandy Desert, provides easy access to Purnululu National Park and a number of natural attractions. Visit the second largest meteorite crater in the world at Wolfe Creek Crater National Park, the six metre high quartz rock known as China Wall, or fresh water springs at Caroline's Pool and Palm Springs.

Kimberley Stations and Wilderness Camps

Landscapes stretch as far as the eye can see, wildlife abounds and gorges and waterfalls open before you. Experience the true seclusion of the Kimberley at a remote station or safari camp.

Test out your skills on a working cattle station, discover a land untouched at a wilderness camp or relax at a coastal camp – a seaside escape with a difference. The stations and wilderness camps of the Kimberley cover a staggering 423,000 kilometres with a population smaller than almost any other place on Earth. From sensational fishing, to remarkable wildlife and breathtaking gorges, you're sure to find your piece of paradise in this ultimate Australian outback experience.



KUNUNURRA
Page 37



KIMBERLEY STATIONS & WILDERNESS CAMPS
Page 41



KIMBERLEY CRUISING
Page 10



BROOME
Page 24



FITZROY CROSSING & HALLS CREEK
Page 46

DISTANCES BY ROAD (KM)						
BROOME						
220	DERBY					
395	258	FITZROY CROSSING				
685	547	290	HALLS CREEK			
1046	909	651	361	KUNUNURRA		
2175	2328	2509	2793	3153	PERTH	
1055	917	660	369	101	3162	WYNDHAM

Distances should be used as a guide only.

- INTERNATIONAL AIRPORTS
- REGIONAL AIRPORTS
- NATIONAL PARKS
- MAIN ROADS
- DIRT ROADS
- ATTRACTIONS
- ACCOMMODATION REFERENCE

NORTHERN TERRITORY



Cable Beach

Essential Experiences



King George Falls



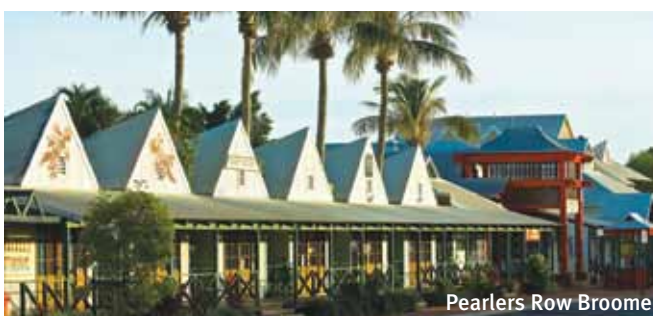
Lake Argyle



Purnululu National Park



Staircase to the Moon



Pearlers Row Broome

1. Cruising

Take an extended cruise along the Kimberley Coast and discover ancient Indigenous rock art, the incredible waterfalls of King George Falls and the coral reefs of Rowley Shoals. View the remarkable Horizontal Falls and witness the huge tidal movements that create this natural phenomenon. (see pages 10 to 19 for details)

2. Cable Beach

One of Australia's most famous beaches, Cable Beach in Broome provides 22 kilometres of white sand framing turquoise waters. A visit to Cable Beach, whether for swimming, relaxing, riding a camel or watching the sunset, is a must-do experience on any trip to Broome. (see page 30 for details)

3. Shop for Pearls and Diamonds

Learn about Broome's pearling history on a tour of a working pearl farm. Take a walk through Chinatown and browse the many fine pearl showrooms that line the streets. Travel to Kununurra for the chance to buy a pink diamond. Take a tour of the world's largest operational diamond mine at Argyle Diamond Mine. (see pages 30 and 40 for details)

4. Lake Argyle

Take a scenic flight over the largest man-made lake in Australia, Lake Argyle. (see page 40 for details)

5. Gibb River Road

Travel through the spectacular Kimberley region along the Gibb River Road between Derby and Kununurra for the four wheel drive adventure of a lifetime.

6. Purnululu National Park

The Kimberley has some of the largest and most remote national parks in Australia. The most well known is Purnululu National Park, home to the Bungle Bungle Range. Enjoy a day tour from Kununurra, or for a true outback experience stay overnight in the park. A great way to explore the range is on foot. There are plenty of walking trails through the park, open from April until around November each year. Discover fabulous vistas, narrow chasms and massive gorges. (see pages 32 to 36 and 40 for details)

7. Staircase to the Moon

Visit Broome between March to October and witness a breathtaking natural phenomenon known as Staircase to the Moon. It is caused by the reflection of the rising full moon off the exposed mudflats.

8. Cape Leveque

Visit an aboriginal community at Cape Leveque on the Dampier Peninsula. Meet the locals, go mud crabbing with a guide, and be sure to see the beautiful pearl shell altar at Beagle Bay. (see pages 30 and 32 for details)

9. Gantheaume Point

See the 130 million year old dinosaur footprint preserved in rock at Gantheaume Point, just south of Cable Beach.

10. Fitzroy River

Head to the Fitzroy River and enjoy some barramundi fishing.

11. Rowley Shoals

If it's marine life you seek, the coral atolls at Rowley Shoals Marine Park 300 kilometres west of Broome have it all – sea turtles, whales, dolphins, manta rays and all kinds of sea life.

12. Aboriginal Rock Art

Aboriginal Wandjina and Bradshaw rock art is on show deep in the wilderness and can be seen in selected national parks including Windjana Gorge, Purnululu and Mitchell River. Pop into an indigenous art gallery in Broome, Kununurra or Derby to see some of the region's more recent work.



Horizontal Falls

Travel Tips

How to Get There

BY AIR Direct flights are available to Broome from Perth and Darwin with Virgin Australia and from Perth, Brisbane, Darwin, Melbourne and Sydney with Qantas. Virgin Australia Regional Airlines is the major regional airline with flights between Perth, Broome, Kununurra and Darwin. Skippers operate flights between Broome, Kununurra and Halls Creek. Airnorth operates flights between Broome, Kununurra and Darwin.

FLIGHT DURATION

FROM / TO	BROOME	KUNUNURRA
Sydney	5 hrs 15 mins	-
Melbourne	4 hrs 45 mins	-
Adelaide	5 hrs 50 mins	-
Perth	2 hrs 30 mins	3 hrs 05 mins
Darwin	1 hr 55 mins	1 hr
Kununurra	1 hr 20 mins	-

The above table shows flight durations for direct flights only. Connecting flights from other destinations are also available. Times are a guide only and subject to change.

BY CAR Take the time to explore and discover as you make your way around the Kimberley and Broome. Whether it's getting there or getting around we recommend Avis car hire. See page 47 for details or ask your travel agent about the great specials Avis has to offer.

Broome, Derby and Kununurra can be accessed by sealed road via the Great Northern Highway in Western Australia or the Victoria Highway linking with the Stuart Highway in the Northern Territory. The unsealed Gibb River Road links Derby and Kununurra.

A unique feature of travelling in the region are road trains. These can be up to 50 metres in length, so extra care

should be taken when overtaking them. Many stations in the Kimberley region are unfenced and it is not uncommon to encounter wandering stock and wildlife. Particular care should be taken when driving at dawn and dusk, and if possible, avoid driving at night. During the summer period (November to April), road closures due to flooding are common, particularly on unsealed roads.

Seasons

SUMMER (NOV TO APR) In summer the weather is hot and humid and the nights balmy. While it's known as the wet season, the rain usually falls in heavy, short downpours in the late afternoon and evenings. Some attractions may not be accessible due to road closures and local flooding.

WINTER (MAY TO OCT) Winter is the most popular time to visit with sunny days and on the coast, cool nights with fresh breezes. This is the best time to experience all outdoor activities, with most roads and attractions open throughout the season.

Swimming

There are plenty of safe places to swim in the region, including Cable Beach. Salt and freshwater crocodiles are found in estuaries, rivers and billabongs in the remote parts of the Kimberley, so always observe warning signs, but if you are not sure, do not swim. Marine stingers are most prevalent along the coastline from November to April.

Aboriginal Culture and Permits

Transit Permits to visit indigenous communities are granted through the Aboriginal Lands Trust. However, it is best to choose a tour where operators already have permission to enter the land. Help preserve indigenous sites by avoiding touching or stepping on these areas.

OUR LOCAL SECRETS

For unbelievably fresh seafood...

Try your hand at Barramundi fishing on a Kimberley cruise. Fishing trips are included in all cruises and the catch of the day is cooked up by the onboard chef.

When friends are in town a great place to go for a drink is...

Matso's Broome Brewery, a microbrewery known for its specialty brews and views of Roebuck Bay.

The Kimberley's best kept secret is...

the ancient rock art at the fascinating Mimbi Caves, 90 kilometres east of Fitzroy Crossing. Witness the amazing cave system with its vivid colours and beautiful limestone rock formations.

While in Broome don't leave without seeing...

the sun set into the Indian Ocean aboard a restored pearl lugger.

DISTANCES BY ROAD (KM)

BROOME							
220	DERBY						
395	258	FITZROY CROSSING					
685	547	290	HALLS CREEK				
1046	909	651	361	KUNUNURRA			
2175	2328	2509	2793	3153	PERTH		
612	765	940	1229	1591	1636	PORT HEDLAND	
1055	917	660	369	101	3162	1599	WYNDHAM

Distances should be used as a guide only.

Weather Guide

TEMPERATURE AVERAGE

	Broome	Kununurra
Summer	26°C to 33°C	25°C to 37°C
Autumn	22°C to 33°C	21°C to 34°C
Winter	15°C to 29°C	16°C to 32°C
Spring	22°C to 33°C	23°C to 38°