



Kelly's Knob Lookout, Kununurra

## Our Favourites

Enjoy a Kununurra sunset from Kelly's Knob Lookout

Explore Purnululu National Park and the Bungle Bungle Range

Tour the Argyle Diamond Mine and buy a pink diamond from a showroom in Kununurra

Cruise the Ord River or Lake Argyle

Enjoy a scenic flight over the beehive domes of the Bungle Bungle Range

Clear blue skies, rich red earth and rugged vistas, Kununurra is the eastern gateway to some of the Kimberley's most renowned attractions. Absorb the enormity of Purnululu National Park with a scenic light plane or helicopter flight, spend the day exploring the amazing red dirt beehive domes of the Bungle Bungle Range or for a true outback experience overnight at a wilderness camp within the park.

Scenic flights are a fantastic way to appreciate this vast landscape and its iconic landmarks. There's the largest man-made lake in Australia, Lake Argyle. It's so big some call it an inland sea. Then there's the Argyle Diamond Mine – the largest open-cut diamond mine in the world.

You'll find an amazing variety of flora and fauna along the Ord River, a popular spot for fishing or a scenic boat cruise.

Browse the art galleries showcasing local and Aboriginal artwork, treat yourself to a fine Argyle diamond from one of the diamond showrooms and be sure to experience a stunning sunset from Kelly's Knob Lookout, the highest point in Kununurra.

From Kununurra an adventure down dirt tracks will reveal spectacular scenery of waterfalls, gorges and even cattle stations. Your outback adventure awaits.

## FIND YOUR ACCOMMODATION

REF.	APARTMENTS	PAGE
3	Freshwater East Kimberley Apartments ★★★★★	39
REF.	HOTELS	PAGE
2	ibis Styles Kununurra ★★★★★	38
1	Kununurra Country Club Resort ★★★★★	39
4	Kununurra Lakeside Resort ★★★★★	38
5	Pinctada Kimberley Grande ★★★★★	38

## KUNUNURRA SURROUNDS

Refer to map on page 7

REF.	HOTELS	PAGE
2	The Berkeley River Lodge ◆◆◆◆◇	39
<b>Other properties available</b>		
3	Lake Argyle Resort ★★★★★	-



# Kununurra

## ibis Styles Kununurra ★★★☆



Surrounded by tropical gardens, ibis Styles Kununurra is a short walk from the town centre and four kilometres from the airport.

Town Centre 1km  
Map page 37 Ref. 2

Corner Messmate Way and Victoria Highway, Kununurra

### PROPERTY FEATURES:

- Free Wi-Fi (public areas)
- Restaurant ■ Bar ■ Pool
- Room service (limited)
- Guest laundry ■ Parking
- Non smoking ■ Courtesy airport transfers (available if pre-booked)

### ROOM FEATURES:

- Pay Wi-Fi
- Air-conditioning
- Tea/coffee making facilities
- In-room movies (free)
- Ironing facilities ■ Hair dryer

Room serviced daily

From **\$90** PER ROOM PER NIGHT\*

1 – 30 APR, 1 OCT 14 – 31 MAR 15	ADULTS	1 NT	3 NTS	5 NTS
Standard	1 to 2	120	360	600
Superior	1 to 2	131	393	655
1 – 17 MAY, 28 MAY – 30 SEP 14	ADULTS	1 NT	3 NTS	5 NTS
Standard	1 to 2	200	600	1000
Superior	1 to 2	211	633	1055

Other prices apply 18 – 27 May 14.

**Children** 0 to 15 years – 1 child free when sharing with an adult and using existing bedding.

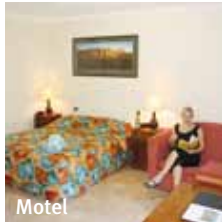
**Max capacity** Standard – 3, Superior – 2.

ALLKXN

### BONUS OFFER

FREE Night Offer: Stay 4 nights, pay for 3, valid 1 Apr – 17 May, 28 May 14 – 31 Mar 15.

## Kununurra Lakeside Resort ★★★☆



Situated alongside the stunning Lake Kununurra, offering a tranquil environment from which to explore the Kimberley.

Town Centre 2.5km  
Map page 37 Ref. 4

Casuarina Way, Kununurra

### PROPERTY FEATURES:

- Restaurants (2) ■ Bar
- Pool (saltwater with big screen television)
- Wharf
- Non smoking
- Courtesy airport transfers Mon to Fri 8am – 4:30pm (available if pre-booked)

### ROOM FEATURES:

- Air-conditioning
- Tea/coffee making facilities
- Limited cooking facilities with microwave (Self Catering Rooms)

Motel Room serviced daily

Self Catering Unit serviced every 4 days



From **\$185** PER ROOM PER NIGHT\*

1 – 30 APR, 1 OCT 14 – 31 MAR 15	ADULTS	1 NT	3 NTS	5 NTS
Self Catering Room Motel	1 to 2	185	555	925
1 – 15 MAY, 19 – 22 MAY, 26 MAY – 30 SEP 14	ADULTS	1 NT	3 NTS	5 NTS
Self Catering Room Motel	1 to 2	205	615	1025
	1 to 2	230	690	1150

Other prices apply 16 – 18 May, 23 – 25 May 14.

**Includes** Light breakfast daily.

**Children** 0 to 11 years – free when sharing with an adult and using existing bedding, room only.

**Max capacity** 3.

KUNKXN

## Pinctada Kimberley Grande ★★★☆



Pinctada Kimberley Grande Bar and Grill

20 Victoria Highway, Kununurra

Take a journey to a timeless land of majestic outback vistas, millions of years in the making.

The homestead-style resort captures the Kimberley's sense of place and space. The colours and textures of the landscape are reflected in the décor, furnishings and original artwork.

Pinctada Kimberley Grande offers well-appointed spa suites, graciously sized guest rooms, a range of dining options, a sports bar with super size screen, a 25 metre swimming pool with spa and lap lanes, and personalised service.

### PROPERTY FEATURES:

- Restaurant ■ Bar
- Room service (limited)
- Pool
- Spa
- Parking
- Courtesy airport transfers (available if pre-booked)

### ROOM FEATURES:

- Pay wired internet
- Air-conditioning ■ Fan
- Tea/coffee making facilities
- Cable TV
- Ironing facilities
- Hair dryer
- All rooms non smoking

Room serviced daily

Town Centre 1.5km  
Map page 37 Ref. 5



From **\$167** PER ROOM PER NIGHT\*



1 APR – 15 MAY, 26 MAY – 30 JUN, 1 SEP – 31 OCT 14	ADULTS	1 NT	3 NTS	5 NTS
Kings Terrace	1 to 2	208	624	1040
Kings Garden/Pool View	1 to 2	239	717	1195
Durack Spa Suite/ Kimberley Spa Suite	1 to 2	312	936	1560
1 JUL – 31 AUG 14	ADULTS	1 NT	3 NTS	5 NTS
Kings Terrace	1 to 2	239	717	1195
Kings Garden/Pool View	1 to 2	271	813	1355
Durack Spa Suite/ Kimberley Spa Suite	1 to 2	343	1029	1715
1 NOV 14 – 31 MAR 15	ADULTS	1 NT	3 NTS	5 NTS
Kings Terrace	1 to 2	167	501	835
Kings Garden/Pool View	1 to 2	199	597	995
Durack Spa Suite/ Kimberley Spa Suite	1 to 2	271	813	1355

Other prices apply 16 – 25 May 14. Room and Breakfast prices are also available.

**Includes** Return coach transfers from airport.

**Children** 0 to 11 years – free when sharing with an adult and using existing bedding.

**Max capacity** Kings Terrace/Kings Garden/Pool View – 3, Durack Spa Suite/Kimberley Spa Suite – 2.

TKGKXN

## Kununurra Country Club Resort ★★★★★



47 Coolibah Drive, Kununurra

### PROPERTY FEATURES:

- Pay Wi-Fi (public areas)
- Restaurant ▪ Bar
- Pool ▪ Parking ▪ Guest laundry
- Courtesy airport transfers (available if pre-booked)

### ROOM FEATURES:

- Pay Wi-Fi
- Air-conditioning
- Tea/coffee making facilities
- Cable TV
- Ironing facilities
- Hair dryer

### Room serviced daily



Centrally located in the heart of Kununurra, the resort offers modern rooms set amongst tropical gardens and is the perfect base to explore the region.

Town Centre 50m  
Map page 37 Ref. 1

From **\$210** PER ROOM PER NIGHT\*

1 APR – 31 OCT 14	ADULTS	1 NT	3 NTS	5 NTS
Club Room	1 to 3	256	768	1280
Triple Room	1 to 3	256	768	1280
1 NOV 14 – 31 MAR 15	ADULTS	1 NT	3 NTS	5 NTS
Club Room	1 to 3	210	630	1050
Triple Room	1 to 3	210	630	1050

Room and Breakfast prices are also available.

**Includes** Coach transfers from Kununurra airport.

**Children** 0 to 4 years – cot free of charge.  
5 to 17 years – adult prices apply.

**Max capacity** Club Room/Triple Room – 3.

**COUKNX**

## Freshwater East Kimberley Apartments ★★★★★☆



19 Victoria Highway, Kununurra

### PROPERTY FEATURES:

- Free Wi-Fi (public areas)
- Pool ▪ Barbecue area
- Guest laundry ▪ Parking
- Courtesy airport transfers (available if pre-booked)

### ROOM FEATURES:

- Air-conditioning
- Fan ▪ Patio
- Kitchen with microwave and dishwasher
- Cable TV ▪ CD/DVD player
- Ironing facilities ▪ Hair dryer
- All rooms non smoking

### Apartment serviced weekly



Offering self contained accommodation, this apartment complex provides the ideal relaxing environment for the ultimate holiday adventure.

Town Centre 1.2km  
Map page 37 Ref. 3

From **\$227** PER ROOM PER NIGHT\*

1 APR – 30 SEP 14	ADULTS	1 NT	3 NTS	5 NTS
1 Bedroom	1 to 2	249	747	1245
2 Bedroom	1 to 4	313	939	1565
3 Bedroom	1 to 6	399	1197	1995
1 OCT 14 – 31 MAR 15	ADULTS	1 NT	3 NTS	5 NTS
1 Bedroom	1 to 2	227	681	1135
2 Bedroom	1 to 4	284	852	1420
3 Bedroom	1 to 6	376	1128	1880

**Includes** Coach transfers from Kununurra airport.

**Children** 0 to 11 years – free when sharing with 2 adults and using existing bedding.

**Max capacity** 1 Bedroom – 2, 2 Bedroom – 5, 3 Bedroom – 7.

**FEKKNX**

## The Berkeley River Lodge ◆◆◆◆◇



### Berkeley River, East Kimberley

The Berkeley River Lodge brings a whole new level of accommodation to the Kimberley Coast in Western Australia. Truly remote and only accessible by air or water. Twenty ocean view villas sit atop a coastal dune surrounded by native vegetation. Views take in the Timor Sea, Reveley Island and the mouth of the stunning Berkeley River.

Indulge in barefoot luxury by the sea and soak up the wide open spaces, fresh air and abundance of nature. Enjoy as much or as little activity as you like. Choose from boat cruises, bush and beach walks, fishing, helicopter journeys or simply lazing by the pool.

### PROPERTY FEATURES:

- Internet facilities (limited)
- Pool ▪ Spa
- Sundeck
- Library
- Laundry service

### ROOM FEATURES:

- Air-conditioning
- Deck ▪ Open-air bathroom

From **\$1650** PER ROOM PER NIGHT\*



### Room serviced daily

Kununurra 120km  
Map page 7 Ref. 2

### HOW TO GET THERE:

**From Kununurra** – 1 hours float plane transfer. Additional charge applies.

1 APR 14 – 31 MAR 15	ADULTS	3 NTS	4 NTS	7 NTS
Villa	1	3225	4300	7525
	2	4950	6600	11550

**Includes** All meals and selected alcoholic beverages daily. All tours and activities excluding helicopter tours.

**Children** 0 to 2 years – cot free of charge.  
3 to 12 years – child prices are on application.

**Max capacity** 2.

**BERKIM**

# Tours from Kununurra

## Full Day Lake Argyle Tour



Travel by coach from Kununurra for 70 kilometres through the magnificent Carr Boyd Ranges. Take a ground tour of the historic Durack Family Homestead. Visit Lake Argyle Resort to see their stunning infinity pool, before joining a cruise to explore Lake Argyle. A highlight is a stop on one of the islands for lunch and a swim. Choose to return to Kununurra by coach, Ord River Cruise or via float plane over the Bungle Bungles.

**INCLUDES:**

- Historic Durack Homestead Museum tour
- Lake Argyle Cruise with lunch, commentary, complimentary soft drink and a beer or wine
- Access to the Infinity pool at Lake Argyle Resort
- Return coach transfers from Kununurra accommodation
- Ord River Cruise (Ord River Cruise option)
- Float plane flight over the Bungle Bungles (Float Plane option)

**Departs:** Daily from Kununurra at 8:30am (Apr – Oct)

**Returns:** 3:30pm

PRICE :	COACH	ORD RIVER CRUISE	FLOAT PLANE
Adult	\$130	\$280	\$585
Concession	\$125	\$270	\$575
Child 3-14 years	\$75	\$195	\$480

LAKE ARGYLE TOURS

LATKNX

## Bungle Bungle Scenic Flight



The scenic flight from Kununurra to the Bungle Bungle is an exhilarating way to take in the Kimberley's best icons. Fly past the Diversion Dam, Lake Kununurra and over the Ord River Irrigation Area before crossing the Carr Boyd Range and Lake Argyle. Fly past Lissadell Homestead, over the Osmand Range and on to the Bungle Bungle. Orbit the Argyle Diamond Mine on the return journey.

**INCLUDES:**

- 2 hour scenic flight
- Expert commentary
- Return transfers from Kununurra accommodation

**Departs:** Daily from Kununurra at 6am, 9am, 12 noon, 2:30pm

**Duration:** 2 hours

PRICE:	
Adult	\$395

Not suitable for children under 12 years. El Questro Wilderness Park and Home Valley Station also available.

SLINGAIR HELIWORK WA

SLIKNX

## Bungle Bungle and Argyle Mine



Combine the treasures of nature with the treasures of the earth in this fly/drive day tour. Fly from Kununurra to the Argyle Diamond Mine for an informative ground tour of the world's largest supplier of diamonds. Argyle Diamonds are found in a range of colours including white, champagne and pink. Argyle is the world's primary source of rare pink diamonds, the company's signature stone.

Board your plane for the scenic flight over the Bungle Bungle, returning to Kununurra via the Ord River, Lake Argyle and the Carr Boyd Range.

**INCLUDES:**

- Scenic plane flight
- Argyle Diamond Mine bus tour
- Buffet lunch at the mine
- Diamond gift pack and Argyle information
- Expert commentary
- Return transfers from Kununurra accommodation

**Departs:** Daily from Kununurra at 9am

**Returns:** 4:30pm

PRICE:	
Adult	\$725

Not suitable for children under 12 years. Transfers from El Questro Wilderness Park and Home Valley Station also available.

SLINGAIR HELIWORK WA

SLIKNX

## Bungle Bungle Explorer



Enjoy a scenic flight from Kununurra to the fabulous Bungle Bungle Range, flying over the mighty Ord River, man made Lake Argyle, Lissadell and Texas Downs Stations.

On arrival in Purnululu National Park take a 4WD tour into the heart of the famous beehive domes. Learn the history of the domes then take the two kilometre walk into stunning Cathedral Gorge and witness the magnificent natural amphitheatre. Enjoy a relaxed lunch before returning to base for the afternoon flight back to Kununurra.

**INCLUDES:**

- Scenic plane flight
- Lunch ■ Afternoon tea
- Knowledgeable guide
- 4WD and walking tour of the Bungle Bungles and Cathedral Gorge ■ National park fees
- Return transfers from Kununurra accommodation

**Departs:** Daily from Kununurra at 8:15am (Apr – Oct)

**Returns:** 5pm

PRICE:	
Adult	\$720
Child 6-12 years	\$648

EAST KIMBERLEY TOURS

EASKNX

## Kimberley Panorama



Flying North West from Kununurra, the flight path takes in the Ord River Irrigation Area, Lower Ord River, Carlton Hill & Ivanhoe Stations, Wyndham, Cambridge Gulf and Adolphus Island before reaching the coast. Travel over the Berkeley River Gorge, King George Falls, Kalumburu Aboriginal Community and Crystal Head.

Land at the Mitchell Plateau airstrip and have a drink and snack before becoming airborne again to make sweeping orbits of the Mitchell Falls and Mertens Gorge. Departing the Mitchell Falls we follow the Moran River to Drysdale River Station, a remote cattle station. Return to Kununurra via El Questro and Emma Gorge with memorable views of the afternoon sun on the western walls of the Cockburn Range.

**INCLUDES:**

- Scenic plane flight
- Lunch
- Expert commentary
- Return transfers from Kununurra accommodation

**Departs:** Tue, Thu from Kununurra at 9am (May – Sep)

**Returns:** 4:30pm

PRICE:	
Adult	\$1095

Not suitable for children under 12 years. Transfers from El Questro Wilderness Park also available.

SLINGAIR HELIWORK WA

SLIKNX

## 2 Day Bungle Bungle Experience



Experience the vastness and diversity of the East Kimberley region. Enjoy a morning scenic flight over the Ord River, the mighty Osmond Ranges and circuit over the Bungle Bungle Range to arrive at Bellburn airstrip. Journey to the southern end of Purnululu National Park and explore the famous Bungle Bungles. Spend the night at the Bungle Bungle Bush Camp.

Next morning after breakfast, travel to the Northern Gorges and walk the Mini Palms trail. After a relaxing picnic lunch, enjoy a second walk through the Echidna Chasm. Transfer to the airstrip for a scenic flight over the Bungle Bungle Range and Argyle Diamond Mine.

**INCLUDES:**

- 1 nights accommodation in an ensuite cabin
- Return scenic flights from Kununurra
- Breakfast on day 2 ■ Lunch on day 1 and 2
- Dinner
- 4WD touring ■ National park fees
- Return transfers from Kununurra accommodation

**Departs:** Daily from Kununurra at 8:15am (Apr – Sep)

**Returns:** 5pm

PRICE:	
Adult twin share	\$1840
Child 6-12 years	\$1656

EAST KIMBERLEY TOURS

EASKNX