

# Kimberley Stations and Wilderness Camps



Carlton Hill Station

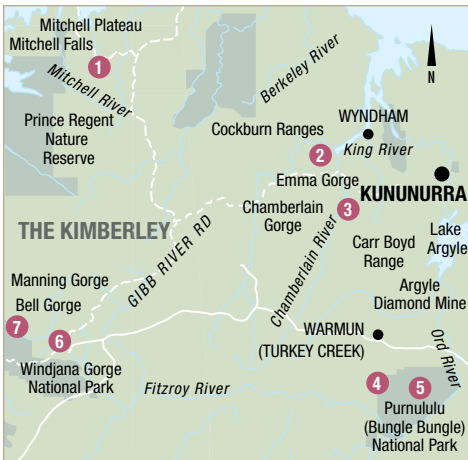
## Our Favourites

Take a walk to Cathedral Gorge in the Bungle Bungles

Explore the many gorges along the Gibb River Road

Relax at Zebedee Thermal Springs at El Questro

Join the privileged few fishing the pristine waters of Admiralty Gulf



Experience the ultimate Kimberley adventure staying at the wilderness camps and working cattle stations dotted throughout the Kimberley region. These camps consist of permanent safari tents with either share or private facilities, while the stations offer a range of accommodation options, from safari tents to guest rooms in the homestead.

Test out your skills on a working cattle station or discover a land untouched at a wilderness camp. The stations and wilderness camps of the Kimberley cover a staggering 423,000 kilometres with a population smaller than almost any other place on Earth. From sensational fishing, to remarkable wildlife and breathtaking gorges, you're sure to find your piece of paradise in this ultimate Australian outback experience.

### FIND YOUR ACCOMMODATION

REF.	PROPERTY	PAGE
6	Bell Gorge Wilderness Lodge ◆◆◆	46
5	Bungle Bungle Bushcamp ◆◆◆◇	47
4	Bungle Bungle Wilderness Lodge ◆◆◆◆	47
3	El Questro Homestead ◆◆◆◆◆	48
3	El Questro Wilderness Park – Emma Gorge Resort ◆◆◆◇	48
3	El Questro Wilderness Park – The Station ◆◆◆◆	48
2	Home Valley Station ◆◆◆◆	47
1	Mitchell Falls Wilderness Lodge ◆◆◆◆	47
7	Mt Hart Homestead ◆◆◆◇	46

## Bell Gorge Wilderness Lodge ◆◆◆



Located just off the Gibb River Road, this picturesque lodge is the perfect base from which to explore the West Kimberley.

Kununurra 485km  
Map page 46 Ref. 6

Gibb River Road, West Kimberley

#### PROPERTY FEATURES:

- Lodge hosts
- Liquor license
- Open air dining
- Gourmet meals
- Camp fire evenings
- Lodge hosts can provide touring advice

#### ROOM FEATURES:

- Comfortable tented cabins
- Twin bedding
- Private en suite
- Deck
- Linen
- Toiletries

#### Mini service daily



BASED ON 1 NIGHT STAY **From \$590** PER ROOM PER NIGHT\*

	ADULTS	1 NT	3 NTS	5 NTS
1 MAY – 27 SEP 15 Standard Twin	1	495	1485	2475
	2	590	1770	2950

Lodge is closed 1 – 30 Apr, 28 Sep 15 – 31 Mar 16.

**Includes** Breakfast and dinner daily.

**Children** 0 to 2 years – cot/bed charge payable direct.  
3 to 14 years – child prices on application.

**Max capacity** 2.

KIMKNX

## Mt Hart Homestead ◆◆◆◇



Located in the heart of King Leopold Ranges Conservation Park, this homestead is the ideal base for exploring the West Kimberley gorge country.

Kununurra 485km  
Map page 46 Ref. 7

King Leopold Ranges Conservation Park (50 km north of Gibb River Road)

#### PROPERTY FEATURES:

- Homestead hosts
- Liquor license
- Laundry facilities
- RFDS rated airstrip
- Library
- Extensive gardens

#### ROOM FEATURES:

- Authentic homestead rooms
- Twin/double/triple bedding
- Shared bathroom facilities

#### Mini service daily

BASED ON 1 NIGHT STAY **From \$390** PER ROOM PER NIGHT\*

	ADULTS	1 NT	3 NTS	5 NTS
1 MAY – 29 SEP 15 Homestead	1	360	1080	1800
	2	390	1170	1950

Homestead is closed 1 – 30 Apr, 30 Sep 15 – 31 Mar 16. \$12 per vehicle per day national park entrance fee payable direct.

**Includes** Breakfast and dinner daily.

**Children** 0 to 2 years – cot/bed charge payable direct.  
3 to 14 years – child prices on application.

**Max capacity** 3.

KIMKNX

## Bungle Bungle Bushcamp ◆◆◆◆



An eco friendly bush camp set in the wilderness of Purnululu National Park, offering ensuite cabins and safari tents with shared facilities.

Kununurra 315km  
Map page 46 Ref. 5

Purnululu National Park

### PROPERTY FEATURES:

- Screened dining area
- Licensed bar

### ROOM FEATURES:

- Private en suite (Cabins)
- Linen
- Lighting

Room not serviced



BASED ON 1 NIGHT STAY From **\$400** PER ROOM PER NIGHT\*

1 APR – 30 NOV 15	ADULTS	1 NT	2 NTS	3 NTS
Safari Tent	2	400	800	1200
Standard Cabin	2	500	1000	1500
Superior Cabin	2	590	1180	1770

Bush camp is closed 1 Dec 15 – 31 Mar 16. Sole use prices also available. \$12 per vehicle per day national park entrance fee payable direct.

**Includes** Full breakfast and dinner daily.

**Children** 0 to 5 years – cot/bed charge payable direct.  
6 to 12 years – child prices on application.

**Max capacity** 2.

**EASKNX**

## Bungle Bungle Wilderness Lodge ◆◆◆◆



Located on Bellburn Creek in the heart of Purnululu National Park, the lodge offers convenient access to the Bungle Bungle Range.

Superior

Kununurra 450km  
Map page 46 Ref. 4

Purnululu National Park

### PROPERTY FEATURES:

- Lodge hosts
- Liquor license
- Gourmet meals
- Camp fire evenings
- Hosts can provide touring advice

### ROOM FEATURES:

- Comfortable tented cabins
- Twin/king bedding
- Private en suite
- Deck
- Linen
- Toiletries

Mini service daily



BASED ON 1 NIGHT STAY From **\$590** PER ROOM PER NIGHT\*

1 MAY – 5 OCT 15	ADULTS	1 NT	3 NTS	5 NTS
Standard Twin	1	495	1485	2475
Superior King/ Superior Twin	1	525	1575	2625
	2	650	1950	3250

Lodge is closed 1 – 30 Apr, 6 Oct 15 – 31 Mar 16. \$12 per vehicle per day national park entrance fee payable direct.

**Includes** Breakfast and dinner daily.

**Children** 0 to 2 years – cot/bed charge payable direct.  
3 to 14 years – child prices on application.

**Max capacity** Standard Twin – 2, Superior King/ Superior Twin – 2 adults/1 child.

**KIMKNX**

### EXCLUSIVELY FOR YOU

Stay 2 nights and receive a free upgrade to a Superior King/ Twin. (subject to availability)

## Mitchell Falls Wilderness Lodge ◆◆◆◆



Close to Mitchell Falls, a major Kimberley attraction, this lodge has minimal impact on the area leaving guests with an untouched natural habitat to explore.

Kununurra 450km  
Map page 46 Ref. 1

Mitchell Falls (70km west of Kalumburu and Mitchell Plateau Road junction)

### PROPERTY FEATURES:

- Lodge hosts
- Liquor license
- Gourmet meals
- Camp fire evenings
- Swimming hole
- Lodge hosts can provide touring advice

### ROOM FEATURES:

- Comfortable tented cabins
- Twin/double bedding
- Private en suite
- Deck
- Linen
- Toiletries

Mini service daily



BASED ON 1 NIGHT STAY From **\$590** PER ROOM PER NIGHT\*

4 MAY – 29 SEP 15	ADULTS	1 NT	3 NTS	5 NTS
Standard Twin/King	1	495	1485	2475
	2	590	1770	2950

Lodge is closed 1 Apr – 3 May, 30 Sep 15 – 31 Mar 16. \$12 per vehicle per day national park entrance fee payable direct.

**Includes** Breakfast and dinner daily.

**Children** 0 to 2 years – cot/bed charge payable direct.  
3 to 14 years – child prices on application.

**Max capacity** 2.

**KIMKNX**

## Home Valley Station ◆◆◆◆



Grass Castle

The ultimate outback experience offering accommodation choices from rugged adventure with a twist of luxury to a more intimate experience.

Kununurra 120km  
Map page 46 Ref. 2

Gibb River Road, East Kimberley

### PROPERTY FEATURES:

- Wi-Fi (public areas – extra charge)
- Restaurant
- Bar
- General store
- Pool

### ROOM FEATURES:

- Air-conditioning (except Eco Tents)
- Fan
- Insect screens
- Tea/coffee making facilities (except Eco Tents)
- Mini bar (Grass Castles)
- Cable TV (Grass Castles)
- Hair dryer (except Eco Tents)
- Television (Grass Castles)

Room serviced daily



BASED ON 1 NIGHT STAY From **\$150** PER ROOM PER NIGHT\*

1 – 31 MAY, 1 SEP – 31 OCT 15	ADULTS	1 NT	2 NTS	3 NTS
Eco Tent	2	150	300	450
Guesthouse Room	2	235	470	705
Grass Castle	2	320	640	960

1 JUN – 31 AUG 15	ADULTS	1 NT	2 NTS	3 NTS
Eco Tent	2	150	300	450
Guesthouse Room	2	285	570	855
Grass Castle	2	380	760	1140

Station closed 1 – 30 Apr, 1 Nov 15 – 31 Mar 16. Sole use prices also available.

**Includes** Full breakfast daily.

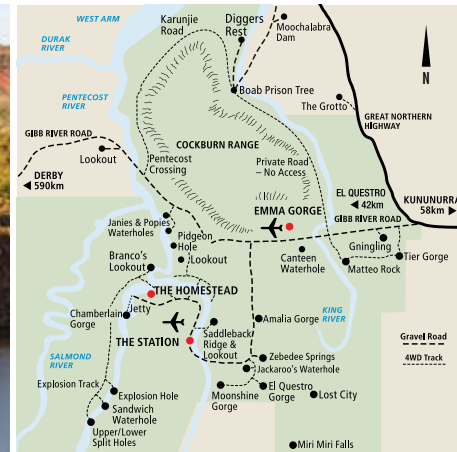
**Children** 0 to 15 years – free when sharing with an adult and using existing bedding.

**Max capacity** Eco Tent/Grass Castle – 2 adults/1 child,  
Guesthouse Room – 2.

**HOMKIM**

# Kimberley Stations and Wilderness Camps

## El Questro Wilderness Park



El Questro Wilderness Park is one of the world's most unique holiday destinations, providing a truly Australian holiday experience in the Kimberley near Kununurra. A million acres in size, El Questro is located in Western Australia's untamed Kimberley region and extends for approximately 80 kilometres, most of which has never been explored. It really is one of the last true frontiers. Go Barramundi fishing, set out on a horse trek, or explore remote areas by helicopter that only a select few have ever seen. A day spent with a local ranger will introduce you

to a huge variety of animals and birds. El Questro offers three types of accommodation, each different in style and catering to a range of budgets. Choose from Tented Cabins at Emma Gorge, Bungalows at The Station or luxurious accommodation at the exclusive Homestead.

### ACTIVITIES AVAILABLE AT AN EXTRA CHARGE:

- Fishing tours ■ Horse riding ■ Scenic helicopter flights
- Gorge cruises ■ Station tours

**Kununurra 110km**  
Map page 46 Ref. 3

### HOW TO GET THERE:

From Kununurra – 2 hours by 4WD.

### PRICE ONE WAY PER PERSON:

	EMMA GORGE RESORT	THE STATION	HOMESTEAD
Adult	\$131	\$167	\$185

Minimum two people required. Helicopter and scenic charter flights are also available from Kununurra, Broome, Darwin and Alice Springs. Ask your travel agent for prices.

## El Questro Wilderness Park – Emma Gorge Resort ◆◆◆◆



Hidden within the fiery red of El Questro's Cockburn Ranges, the tented cabins allow you to stay in comfort and style.

Via The Gibb River Road, East Kimberley

### PROPERTY FEATURES:

- Wi-Fi (public areas – extra charge)
- Restaurant
- Bar
- Pool
- Guest laundry
- Boutique

### ROOM FEATURES:

- Fan
- Private bathroom

Room serviced daily

BASED ON 1 NIGHT STAY **From \$298** PER ROOM PER NIGHT\*

1 APR – 27 SEP 15	ADULTS	1 NT	3 NTS	5 NTS
Tented Cabin	1 to 2	298	894	1490

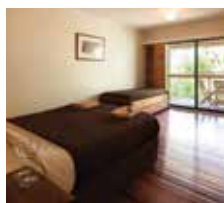
Park is closed 28 Sep 15 – 31 Mar 16. \$20 per adult wilderness park permit payable direct, valid for 7 days.

**Children** 0 to 12 years – free when sharing with an adult and using existing bedding.

**Max capacity** 4.

ELQKIM

## El Questro Wilderness Park – The Station ◆◆◆◆



The Station is the central hub of El Questro Wilderness Park. Stay in a bungalow location on the banks of the Pentecost River.

Via The Gibb River Road, East Kimberley

### PROPERTY FEATURES:

- Wi-Fi (public areas – extra charge)
- Restaurant ■ Bar ■ Guest laundry
- Sundry shop ■ Fuel outlet

### ROOM FEATURES:

- Air-conditioning ■ Hair dryer
- Balcony (River View Bungalows)
- Tea/coffee making facilities
- Mini refrigerator
- Private bathroom ■ Ironing facilities

Room serviced daily

BASED ON 1 NIGHT STAY **From \$329** PER ROOM PER NIGHT\*

1 APR – 24 OCT 15	ADULTS	1 NT	3 NTS	5 NTS
Station Bungalow Garden View	1 to 2	329	987	1645
Station Bungalow River View	1 to 2	385	1155	1925

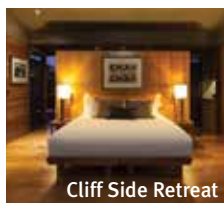
Park is closed 25 Oct 15 – 31 Mar 16. \$20 per adult wilderness park permit payable direct, valid for 7 days.

**Children** 0 to 12 years – free when sharing with an adult and using existing bedding.

**Max capacity** Station Bungalow Garden View – 6, Station Bungalow River View – 4.

ELQKIM

## El Questro Homestead ◆◆◆◆



Cliff Side Retreat

Experience the untamed Kimberley at The Homestead, an exclusive retreat perched atop the Chamberlain Gorge.

Via The Gibb River Road, East Kimberley

### PROPERTY FEATURES:

- Free Wi-Fi (public areas)
- Internet café ■ Exclusive dining ■ Bar
- Pool ■ Tennis court ■ Library

### ROOM FEATURES:

- Air-conditioning ■ Verandah ■ Fan
- Tea/coffee making facilities ■ Mini bar
- Ironing facilities ■ Hair dryer
- CD player ■ iPod docking station
- Bathrobes ■ Private bathroom

Room serviced twice daily

BASED ON 4 NIGHT STAY **From \$1674** PER ROOM PER NIGHT\*

1 APR – 24 OCT 15	ADULTS	2 NTS	3 NTS	4 NTS
Homestead Garden	1	3158	4737	5368
	2	3938	5907	6696
Chamberlain Gorge	1	3998	5997	6796
	2	4778	7167	8124
Cliff Side Retreat	1	4818	7227	8192
	2	5598	8397	9516
Chamberlain Suite	1	5018	7527	8532
	2	5798	8697	9856

Park is closed 25 Oct 15 – 31 Mar 16.

**Includes** All dining and beverages daily. (excludes Cellar Masters list)  
Selected touring. Wilderness park permit.

**Children** 0 to 12 years – not catered for.

**Max capacity** 2.

ELQKIM