



Boyntons Winery, High Country

Our Favourites

Pan for gold at Sovereign Hill,
Ballarat

Explore the Grampians National Park

Hire a boat and cruise around the
beautiful Gippsland Lakes

Visit Brown Brothers Winery in
Milawa

Dine at Stefano's in Mildura

Welcome to country life in Victoria. Rich in history and loaded with things to see and do, tick off an entire holiday wish list with one great experience after another.

As diverse as it is beautiful, Gippsland's landscape moves from beaches to lakes to mountain ranges, with towns that all have that casual country charm. Visit Walhalla, once one of Australia's richest towns after gold discoveries in the 1800s. Picturesque Sale is your gateway to the Gippsland Lakes, with access to great beaches and national parks. Soak up some fresh sea air as you cruise the lakes at Lakes Entrance. Delve into the mining history of the Goldfields. Explore historic Ballarat with its fantastic galleries, gardens and museums. Ballarat's most fabulous attraction has to be Sovereign Hill. This living outdoor museum on a former gold mining site recreates life in the 1850s. Discover the splendour of Bendigo and its art gallery which holds a collection of Australian art dating back to the 1850s.

Time for a little indulgence? The pamper spots are so abundant in Daylesford and Hepburn Springs they call it Spa Country. The focus is on all things pampering and wellbeing, with Australia's greatest concentration of natural mineral springs. Pick up the pace with a walk in breathtaking scenery through The Grampians, a prime spot for outdoor lovers. The Murray River and the water based activities that come with it are the major drawcard of Mildura and Echuca. No visit to the High Country is complete without some mountain adventures. Hit the ski slopes of Falls Creek in a winter wonderland. Then in the warmer months, pedal your way across the alps or just enjoy the wildflowers, farm fresh produce and mountain walks.

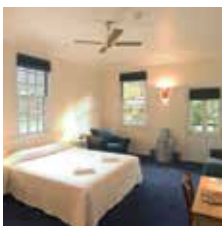
FIND YOUR ACCOMMODATION

REF.	PROPERTY	PAGE
5	Ballarat Lodge ★★★★★	59
4	Bear Gully Coastal Cottages ◆◆◆◆	58
9	Bendigo Homestead Motor Inn and Apartments ◆◆◆◆◇	59
2	Captains Lodge International ★★★	58
5	Comfort Inn Suites City Views ★★★★★	59
8	Hepburn at Hepburn ◆◆◆◆◆	60
7	Hotel Frangos, Daylesford ★★★★★	60
1	Lakes Entrance Waverley House Cottages ★★★★★☆	58
6	Novotel Forest Resort Creswick ★★★★★☆	60
10	Royal Mail Hotel, Grampians ★★★★★	59
3	Walhalla's Star Hotel ◆◆◆◆◇	58



Victoria's High Country

Walhalla's Star Hotel ◆◆◆◇



Located in the heart of Walhalla historic township the hotel incorporates all modern amenities and facilities in stylish surroundings.

Town Centre 10m
Map page 57 Ref. 3

Main Road, Walhalla

PROPERTY FEATURES:

- Internet facilities
- Air-conditioning
- Restaurant
- Bar
- Guest lounge
- Book and CD library
- Wood fires
- Non smoking
- Complimentary pick-up from Traralgon station

ROOM FEATURES:

- Air-conditioning
- Fan
- Heating
- Balcony or garden deck
- Tea/coffee making facilities
- CD player

Room serviced daily



BASED ON
1 NIGHT STAY

From **\$239** PER ROOM PER NIGHT*

1 APR 14 – 31 MAR 15	ADULTS	1 NT	2 NTS	3 NTS
Deluxe	1 to 2	239	478	717

Includes Light breakfast daily.

Children 0 to 11 years – not catered for.

Max capacity 3.

WALWAL

Captains Lodge International, Sale ★★★



King

Set on 3.5 acres offering ground floor rooms with direct access to the swimming pool, gardens and barbecue area.

Town Centre 2km
Map page 57 Ref. 2

54 Wurruk Way, Sale

PROPERTY FEATURES:

- Internet facilities
- Restaurant
- Bar
- Room service (limited)
- Pool
- Guest laundry
- Parking

ROOM FEATURES:

- Air-conditioning
- Heating
- Tea/coffee making facilities
- Hair dryer

Room serviced daily

BASED ON
1 NIGHT STAY

From **\$92** PER ROOM PER NIGHT*

1 APR 14 – 31 MAR 15	ADULTS	1 NT	2 NTS	3 NTS
Standard	1 to 2	92	184	276
King	1 to 3	110	220	330
Family	1 to 2	120	240	360
Suite	1 to 4	170	340	510

Children 0 to 1 years – not catered for.
2 to 10 years – \$15 per child per night.

Max capacity Standard/King – 2, Family – 3 adults or 2 adults/
2 children, Suite – 4.

CAPVIC

EXCLUSIVELY FOR YOU

FREE light breakfast daily for stays of 2 nights or more.

Lakes Entrance Waverley House Cottages ★★★★★☆



These beautiful self-contained cottages are nestled in a quiet garden setting with ocean or rural views.

Town Centre 3.5km
Map page 57 Ref. 1

205 Palmers Road, Lakes Entrance

PROPERTY FEATURES:

- Pool
- Spa
- Barbecue area

ROOM FEATURES:

- Spa bath
- Patio
- Air-conditioning
- Kitchen with microwave and dishwasher
- CD/DVD player
- Laundry

Cottages not serviced during stay



BASED ON
1 NIGHT STAY

From **\$170** PER ROOM PER NIGHT*

1 – 17 APR, 23 – 24 APR, 28 APR – 5 JUN, 10 JUN – 30 OCT, 5 NOV – 21 DEC 14, 13 – 22 JAN, 27 JAN – 5 MAR, 10 – 31 MAR 15	ADULTS	1 NT	2 NTS	3 NTS
1 Bedroom Cottage	1 to 2	170	340	510
2 Bedroom Cottage	1 to 4	220	440	660
2 Bedroom 2 Bathroom Cottage	1 to 4	250	500	750

18 – 22 APR, 25 – 27 APR, 6 – 9 JUN, 31 OCT – 4 NOV, 22 DEC 14 – 12 JAN, 23 – 26 JAN, 6 – 9 MAR 15	ADULTS	2 NTS	3 NTS	4 NTS
1 Bedroom Cottage	1 to 2	480	720	960
2 Bedroom Cottage	1 to 4	560	840	1120
2 Bedroom 2 Bathroom Cottage	1 to 4	580	870	1160

Children 0 to 11 years – free when sharing with an adult and using existing bedding.

Max capacity 1 Bedroom Cottage – 2, 2 Bedroom Cottage/
2 Bedroom 2 Bathroom Cottage – 4.

LEWVIC

Bear Gully Coastal Cottages ◆◆◆◆



Stunning location on Waratah Bay with beach frontage and easy distance to Wilsons Promontory.

Town Centre 40km
Beach 50m
Map page 57 Ref. 4

33 Maitland Court, Walkerville South

PROPERTY FEATURES:

- Barbecue area
- Guest laundry
- Parking
- Non smoking

ROOM FEATURES:

- Ocean views
- Fan
- Deck
- Kitchen with microwave
- CD/DVD player
- iPod docking station
- Washer
- Hair dryer
- All rooms non smoking

Room not serviced

BASED ON
2 NIGHT STAY

From **\$265** PER ROOM PER NIGHT*

1 – 17 APR, 22 APR – 30 SEP 14	ADULTS	2 NTS	3 NTS	4 NTS
MONDAY TO THURSDAY				
1 Bedroom Cottage	2	530	795	1060
2 Bedroom Cottage	4	670	1005	1340

FRIDAY TO SUNDAY	ADULTS	2 NTS	3 NTS	4 NTS
1 Bedroom Cottage	2	620	930	N/A
2 Bedroom Cottage	4	760	1140	N/A

1 – 30 OCT, 4 NOV – 23 DEC 14, 13 JAN – 31 MAR 15	ADULTS	2 NTS	3 NTS	4 NTS
MONDAY TO THURSDAY				
1 Bedroom Cottage	2	530	795	1060
2 Bedroom Cottage	4	670	1005	1340

FRIDAY TO SUNDAY	ADULTS	2 NTS	3 NTS	4 NTS
1 Bedroom Cottage	2	650	975	N/A
2 Bedroom Cottage	4	790	1185	N/A

Other prices apply 18 – 21 Apr, 31 Oct – 3 Nov, 24 Dec 14 – 12 Jan 15.

Children 0 to 11 years – free when sharing with an adult and using existing bedding.

Max capacity 1 Bedroom Cottage – 2, 2 Bedroom Cottage – 4.

BEAVIC

Bendigo Homestead Motor Inn and Apartments ◆◆◆◇



Situated close to Bendigo city centre, the motel combines quality accommodation and leisure facilities.

Melbourne CBD 147km
Town Centre 4km
Map page 57 Ref. 9

508 High Street, Golden Square, Bendigo

PROPERTY FEATURES:

- Wi-Fi (public areas – extra charge)
- Room service (limited)
- Barbecue area ■ Pool
- Guest laundry
- Parking ■ Non smoking

ROOM FEATURES:

- Wi-Fi (extra charge)
- Air-conditioning
- Limited cooking facilities with microwave (Executive rooms)
- Tea/coffee making facilities
- Mini bar
- Ironing facilities ■ Hair dryer

Room serviced daily

BASED ON 1 NIGHT STAY	From \$140 PER ROOM PER NIGHT*			
	ADULTS	1 NT	2 NTS	3 NTS
1 APR 14 – 31 MAR 15				
Standard	1 to 2	140	280	420
Executive	1 to 2	165	330	495

Children 0 to 2 years – cot free of charge.
3 to 12 years – adult prices apply.

Max capacity Standard – 3, Executive – 2.

HOMBXG

Ballarat Lodge ★★★★★



Located within the Victorian Goldfields offering warm country hospitality beautiful gardens and its own day spa.

Melbourne CBD 115km
Town Centre 5km
Map page 57 Ref. 5

613 Main Street, Ballarat

PROPERTY FEATURES:

- Wi-Fi (public areas – extra charge)
- Sanctuary Day Spa
- 24 hour reception ■ Restaurant
- Bar ■ Room service (limited)
- Business facilities ■ Guest lounge
- Massage facilities ■ Pool (outdoor)
- Fireplace ■ Squash court ■ Parking

ROOM FEATURES:

- Wi-Fi (extra charge) ■ Air-conditioning
- Tea/coffee making facilities ■ Patio
- In-room movies (pay to view)
- Ironing facilities ■ Hair dryer

Room serviced daily



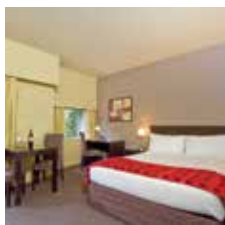
BASED ON 1 NIGHT STAY	From \$140 PER ROOM PER NIGHT*			
	ADULTS	1 NT	2 NTS	3 NTS
1 APR 14 – 31 MAR 15				
Standard	1 to 2	140	280	420

Children 0 to 11 years – free when sharing with an adult and using existing bedding.

Max capacity 3.

MERBLR

Comfort Inn Suites City Views ★★★★★



Located in the heart of the city on historic Bakery Hill and offers contemporary style guest rooms.

Melbourne CBD 115km
Town Centre 1km
Map page 57 Ref. 5

101 Curtis Street, Ballarat

PROPERTY FEATURES:

- Free Wi-Fi (public areas)
- Room service (limited)
- Pool (heated indoor)
- Guest laundry
- Parking
- Business facilities

ROOM FEATURES:

- Air-conditioning
- Tea/coffee making facilities
- Limited cooking facilities (microwave)
- Mini bar
- Cable TV
- Ironing facilities

Room serviced daily



BASED ON 1 NIGHT STAY	From \$166 PER ROOM PER NIGHT*			
	ADULTS	1 NT	2 NTS	3 NTS
1 – 30 APR, 22 – 24 DEC 14 – 15 JAN, 18 JAN – 11 FEB, 15 FEB – 31 MAR 15				
Standard Queen	1 to 2	176	352	528
1 MAY – 5 JUN, 9 JUN – 21 SEP, 1 NOV – 23 DEC 14				
Standard Queen	1 to 2	166	332	498
6 – 8 JUN, 22 – 30 SEP 14				
Standard Queen	1 to 2	237	474	711
1 – 31 OCT 14, 16 – 17 JAN, 12 – 14 FEB 15				
Standard Queen	1 to 2	247	494	741

Children 0 to 12 years – free when sharing with an adult and using existing bedding.

Max capacity 3.

CISBLR

Royal Mail Hotel, Grampians ★★★★★



Quality accommodation with a restaurant and bar at the southern entrance of the majestic Grampians National Park.

Melbourne CBD 32km
Town Centre 100km
Map page 57 Ref. 10

98 Parker Street, Dunkeld

PROPERTY FEATURES:

- Free Wi-Fi (public areas)
- Restaurant ■ Café ■ Bar
- Room service (limited)
- Pool (outdoor) ■ Fireplace
- DVD library ■ Massage facilities
- Guest laundry

ROOM FEATURES :

- Air-conditioning
- Tea/coffee making facilities
- Cable TV ■ Patio
- Ironing facilities
- Hair dryer

Room serviced daily



BASED ON STAY 3, PAY 2	From \$127 PER ROOM PER NIGHT*			
	ADULTS	1 NT	3 NTS	5 NTS
1 – 17 APR, 22 – 24 APR, 26 APR – 6 JUN, 11 JUN – 31 OCT, 5 – 21 NOV, 24 NOV – 23 DEC, 27 – 29 DEC 14, 3 JAN – 31 MAR 15				
SUNDAY TO THURSDAY [^]				
Garden	1 to 2	190	380	760
Mt Sturgeon 1 Bedroom Cottage	1 to 2	210	420	840
FRIDAY TO SATURDAY				
Garden	1 to 2	225	450	N/A
Mt Sturgeon 1 Bedroom Cottage	1 to 2	325	650	N/A

Children 0 to 12 years – free when sharing with an adult and using existing bedding.

Max capacity Garden – 3, Mt Sturgeon 1 Brm – 2. **ROYGMP**

Other prices apply 18 – 21 Apr, 25 Apr, 7 – 10 Jun, 1 – 4 Nov, 22 – 23 Nov, 24 – 26 Dec, 30 Dec 14 – 2 Jan 15.

Includes Light breakfast daily.

Children 0 to 12 years – free when sharing with an adult and using existing bedding.

Max capacity Garden – 3, Mt Sturgeon 1 Brm – 2. **ROYGMP**

BONUS OFFER

[^] FREE Night Offer: Stay 3 nights, pay for 2.

Hepburn at Hepburn ◆◆◆◆



BASED ON
1 NIGHT STAY

From **\$337** PER ROOM
PER NIGHT*



2-8 Range Road, Hepburn Springs

Nestled beneath the rolling hills of eucalyptus trees and picturesque natural bushland just an hour and half drive from Melbourne, Hepburn on Hepburn is a tranquil, plush, serene hideaway in the heart of the spa country.

The Daylesford region is a robust foodie community with an abundance of spas that take advantage of the regions famed mineral springs. Hepburn at Hepburn is an adult's only retreat that sets a precedent in first class accommodation with modern technology, distinctive architecture and sophisticated design that is captured in the 14 opulent villas.

PROPERTY FEATURES:

- Free Wi-Fi (public areas)
- Day spa
- Parking
- Non smoking

ROOM FEATURES:

- Fireplace
- Spa bath
- Kitchen with microwave and dishwasher
- CD/DVD player
- iPod docking station
- Ironing facilities

Room serviced on request

Melbourne CBD 117km

Town Centre 300m

Map page 57 Ref. 8



1 APR 14 – 31 MAR 15	ADULTS	1 NT	2 NTS	3 NTS
SUNDAY TO THURSDAY 1 Bedroom Villa	1 to 2	337	674	1011
FRIDAY TO SATURDAY 1 Bedroom Villa	1 to 2	429	858	N/A

Children 0 to 11 years – not catered for.

Max capacity 2.

HEPHEP



Hotel Frangos, Daylesford ★★★★★



BASED ON
1 NIGHT STAY

From **\$325** PER ROOM
PER NIGHT*



Walnut

82 Vincent Street, Daylesford

PROPERTY FEATURES:

- Free Wi-Fi (public areas)
- Endota Day Spa ■ 24 hour reception
- Restaurant ■ Café
- Room service (limited)
- Bar ■ Fireplace ■ Guest lounge
- DVD library ■ Parking

ROOM FEATURES:

- Air-conditioning
- Mini bar ■ Bathrobes
- Tea/coffee making facilities
- CD/DVD player ■ iPod docking station
- Ironing facilities ■ Hair dryer

Room serviced daily



1 APR 14 – 31 MAR 15	ADULTS	1 NT	2 NTS	3 NTS
Nest/Walnut	2	325	650	975
Carousel	2	355	710	1065
Retro/Rouge/Icon/Hush/Vue	2	365	730	1095
Alpha/Monroe	2	375	750	1125
Rose/Terrace	2	400	800	1200

Includes Light breakfast daily.

Children 0 to 12 years – not catered for.

Max capacity 2.

HTDFDF

Novotel Forest Resort Creswick ★★★★★☆

BASED ON
STAY 3, PAY 2

From **\$127** PER ROOM
PER NIGHT*



Located on 150 acres of bushland in the heart of Victorian Spa Country, surrounded by an 18 hole golf course.

Melbourne CBD 120km

Town Centre 2km

Map page 57 Ref. 6

1500 Midland Highway, Creswick

PROPERTY FEATURES:

- Day spa ■ 24 hour reception ■ Bar
- Restaurant ■ Room service (24 hour)
- Golf course (18 hole) ■ Gymnasium
- Tennis court ■ Pool (heated)
- Laundry/dry cleaning service ■ Parking

ROOM FEATURES:

- Wi-Fi (extra charge) ■ Air-conditioning
- Balcony ■ Spa bath
- Tea/coffee making facilities ■ Mini bar
- Cable TV ■ In-room movies (pay to view)
- Hair dryer ■ Ironing facilities ■ Safe

Room serviced daily



1 – 17 APR, 22 – 24 APR, 28 APR – 6 JUN, ADULTS	1 NT	2 NTS	3 NTS
10 JUN – 1 OCT, 14 OCT 14 – 31 MAR 15			
SUNDAY TO THURSDAY			
Standard	1 to 2	190	380
Superior	1 to 2	206	412
FRIDAY TO SATURDAY			
Standard	1 to 2	210	420
Superior	1 to 2	225	450

Other prices apply 18 – 21 Apr, 25 – 27 Apr, 7 – 9 Jun, 2 – 13 Oct 14.

Children 0 to 15 years – free when sharing with an adult and using existing bedding.

Max capacity 2.

NFRVIC

EXCLUSIVELY FOR YOU

FREE Night Offer: Stay 3 nights, pay for 2, valid 1 Apr – 30 Sep 14.

FREE full buffet breakfast for 2 adults and 2 children daily for stays of 2 nights or more, valid 15 Dec 14 – 31 Jan 15.