



## Our Favourites

Ride the Skyline Gondola for picture postcard views

Milford and Doubtful Sounds are in easy reach from Queenstown

Ski Coronet Peak and The Remarkables in winter

Go rafting or jet boating on the Shotover or Kawarau Rivers

Have a meal, a drink or party into the night at Steamer Wharf

It's famed for its ski fields, but there's so much more to Queenstown. There's opportunity for adventure around every corner but also a luxury lifestyle that means waking up to amazing restaurants, shopping and pamper spots.

Each season brings new personality to Queenstown. Long summer days throw the hills open to mountain bike riders before the snow transforms the landscape to a skiing wonderland in winter. Spring time brings softer snow and fresh golfing greens but the top class restaurants and night time party lifestyle continues all year round.

The best views are from the top so make your way to one of the city's many vantage points for some incredible sights. Climb Queenstown Hill or Ben Lomond for views across Queenstown and beyond. Have the Skyline Gondola whisk you into the clouds for the classic outlook across Lake Wakatipu and Queenstown to The Remarkables mountain range. Make the most of the mountains with a trail ride through the high country or go rock climbing for more incredible views.

Adventure takes on new meaning in Queenstown. Test your limits as you hurtle through the air on a sky dive, hang glider or bungy. Feel the need for speed in a jet boat, white water raft or canyon swing. Or get back to nature and pan for gold, take a kayak around calm waterways or ride a horse through the mountains.

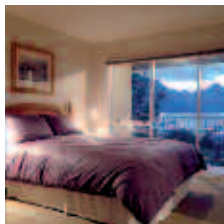
After all your adventures, reward your efforts with a relaxing round of golf, some trout fishing, a spot of shopping or an afternoon of luxury at a day spa.

## FIND YOUR ACCOMMODATION

REF.	APARTMENTS	PAGE
8	BreakFree The Waterfront ♦♦♦♦	72
1	Clarion Suites Highview ♦♦♦♦	72
17	The Glebe Apartments ★★★★★	75
15	Heritage Heights ♦♦♦♦	72
27	Oaks Club Resort ★★★★★☆	74
29	Oaks Shores ★★★★★☆	74
<b>Other properties available</b>		
26	Pounamu Apartments ★★★★★	-
21	Scenic Suites Queenstown ★★★★★	-
28	Villa Del Lago ★★★★★	-
REF.	HOTELS	PAGE
10	Browns Boutique Hotel ★★★★★	73
24	Copthorne Hotel & Resort Lakefront Queenstown ★★★★★	73
9	Crowne Plaza Queenstown ★★★★★☆	74
14	Distinction Nugget Point Boutique Hotel ♦♦♦♦♦	75
7	Hotel St Moritz ★★★★★	75
13	Millbrook Resort, Arrowtown ★★★★★	76
23	Millennium Hotel Queenstown ★★★★★☆	74
19	Novotel Queenstown Lakeside ★★★★★	73
6	Peppers Beacon ★★★★★	75
5	Rydges Lakeland Resort Queenstown ★★★★★	73
12	Sofitel Queenstown Hotel & Spa ★★★★★	76
4	Tanoa Aspen Hotel ♦♦♦♦	72
<b>Other properties available</b>		
20	Central Ridge Boutique Hotel, Queenstown ♦♦♦♦♦	-
11	The Dairy Private Luxury Hotel ★★★★★☆	-
22	Heartland Hotel Queenstown ★★★	-
2	Heritage Hotel Queenstown ★★★★★☆	-
25	Kingsgate Hotel Terraces, Queenstown ★★★★★☆	-
3	Mercure Queenstown Resort ♦♦♦♦	-
16	Queenstown House ★★★★★	-
30	Remarkables Lodge, Queenstown ★★★★★	-
18	The Spire Hotel ★★★★★	-



## Heritage Heights ♦♦♦♦



The spacious apartments are warm and cosy, fully furnished, well-appointed with breathtaking views of the lake, mountains and town.

Town Centre 300m  
Map page 71 Ref. 15

7 Anderson Heights, Queenstown

### PROPERTY FEATURES:

- Parking
- Non smoking

### ACCOMMODATION FEATURES:

- Balcony ■ Spa bath
- Kitchen with microwave and dishwasher
- Cable TV
- CD/DVD player
- iPod docking station
- 2 bathrooms in 2 and 3 Bedrooms
- Internet access (broadband and wireless)
- Washer/dryer ■ Ironing facilities

Apartment serviced on request (extra charge)

From **\$186** PER ROOM PER NIGHT\*

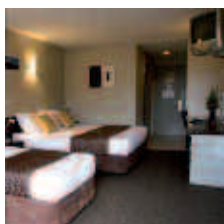
1 APR – 31 MAY 11	ADULTS	1 NT	2 NTS	4 NTS
1 Bedroom	1 to 2	N/A	N/A	744
2 Bedroom	1 to 4	242	484	968
3 Bedroom	1 to 6	363	725	1450
1 JUL – 15 AUG 11	ADULTS	1 NT	3 NTS	5 NTS
3 Bedroom	1 to 6	363	1088	1813
16 – 31 AUG 11	ADULTS	1 NT	3 NTS	5 NTS
3 Bedroom	1 to 6	357	1071	1785
1 – 30 SEP, 1 DEC 11 – 29 FEB 12	ADULTS	1 NT	3 NTS	5 NTS
2 Bedroom	1 to 4	249	747	1245
3 Bedroom	1 to 6	357	1071	1785
1 OCT – 30 NOV 11, 1 – 31 MAR 12	ADULTS	1 NT	2 NTS	4 NTS
1 Bedroom	1 to 2	N/A	N/A	817
2 Bedroom	1 to 4	249	498	996
3 Bedroom	1 to 6	357	714	1428

Other prices apply 1 – 30 Jun.

**Children** 0 to 1 years – cot/bed charge payable direct.  
2 to 14 years – adult prices apply.

**Max capacity** 1 Brm – 2, 2 Brm – 4, 3 Brm – 7. **HHEZQN**

## Tanoa Aspen Hotel ♦♦♦♦



Located atop Fernhill with stunning views over the adventure playground of Queenstown, the hotel offers a quiet location and genuine hospitality.

Town Centre 4km  
Map page 71 Ref. 4

139 Fernhill Road, Queenstown

### PROPERTY FEATURES:

- 24 hour reception ■ Restaurant
- Bar ■ Room service (limited)
- Guest lounge ■ Barbecue area
- Spa ■ Internet facilities
- Parking ■ Non smoking

### ACCOMMODATION FEATURES:

- Fan ■ Balcony or patio
- Tea/coffee making facilities
- Kitchen with microwave and dishwasher (Apartments)
- In-room movies (free)
- Washer/dryer (Apartments)
- Ironing facilities

Room serviced daily

From **\$121** PER ROOM PER NIGHT\*

1 APR – 8 SEP 11	ADULTS	1 NT	3 NTS	5 NTS
Courtyard	1 to 2	121	362	603
Studio	1 to 2	121	362	603
Lakeview	1 to 2	142	426	710
1 Bedroom	1 to 2	200	598	997
2 Bedroom	1 to 4	253	757	1261
11 OCT 11 – 31 MAR 12	ADULTS	1 NT	3 NTS	5 NTS
Courtyard	1 to 2	123	369	615
Studio	1 to 2	130	388	647
Lakeview	1 to 2	148	442	737
1 Bedroom	1 to 2	200	598	997
2 Bedroom	1 to 4	256	766	1277

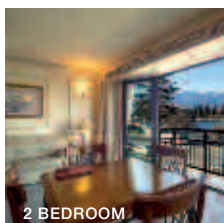
Other prices apply 9 Sep – 10 Oct 11.

**Children** 0 to 12 years – up to 2 children free when sharing with 2 adults and using existing bedding.

**Max capacity** Courtyard/1 Bedroom – 3, Studio/Lakeview – 2, 2 Bedroom – 5.

**A0QZQN**

## BreakFree The Waterfront ♦♦♦♦



Just 100 metres to the main street and 30 metres to the lake, apartments boast uninterrupted views of Lake Wakatipu and The Remarkables.

Town Centre 100m  
Map page 71 Ref. 8

109 Beach Street, Queenstown

### PROPERTY FEATURES:

- Internet access (wireless)
- Lift
- Guest laundry
- Parking (undercover security)
- Non smoking

### ACCOMMODATION FEATURES:

- Kitchen with microwave and dishwasher
- Cable TV
- CD player
- Internet access (wireless)
- Washer/dryer (3 Bedrooms)

Apartment serviced weekly

From **\$159** PER ROOM PER NIGHT\*

1 APR – 24 JUN, 29 OCT 11 – 31 MAR 12	ADULTS	1 NT	3 NTS	5 NTS
Studio	1 to 2	186	476	792
1 Bedroom	1 to 2	210	546	910
2 Bedroom	1 to 4	226	594	989
2 Bedroom 2 Bathroom	1 to 4	257	688	1147
3 Bedroom	1 to 6	372	1031	1718
25 JUN – 28 OCT 11	ADULTS	1 NT	3 NTS	5 NTS
Studio	1 to 2	223	669	1115
1 Bedroom	1 to 2	247	740	1233
2 Bedroom	1 to 4	263	788	1312
2 Bedroom 2 Bathroom	1 to 4	294	882	1470
3 Bedroom	1 to 6	409	1225	2041

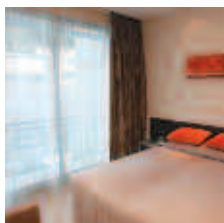
2 night minimum stay applies 25 Jun – 24 Aug 11. 3 night minimum stay applies 30 Dec 11 – 2 Jan 12.

**Children** 0 to 2 years – cot/bed charge payable direct.  
3 to 14 years – adult prices apply.

**Max capacity** Studio – 2, 1 Bedroom – 3, 2 Bedrooms – 5, 3 Bedroom – 7.

**WATZQN**

## Clarion Suites Highview ♦♦♦♦



Stylish apartments are architecturally designed many boasting majestic views across the pristine waters of Lake Wakatipu.

Town Centre 1km  
Map page 71 Ref. 1

66-70 Thompson Street, Queenstown

### PROPERTY FEATURES:

- Barbecue area ■ Exercise equipment
- Fireplace ■ Internet access (wireless)
- Guest laundry ■ Parking ■ Non smoking

### ACCOMMODATION FEATURES:

- Tea/coffee making facilities
- Lake views (Apartments)
- Kitchen with microwave and dishwasher (Apartments)
- CD/DVD player
- Internet access (wireless)
- Washer/dryer (Apartments)

Room serviced mid stay for stays of 4 nights or more



From **\$146** PER ROOM PER NIGHT\*

1 APR 11 – 31 MAR 12	ADULTS	1 NT	3 NTS	5 NTS
Studio	1 to 2	146	438	729
1 Bedroom	1 to 2	225	674	1123
2 Bedroom	1 to 4	312	934	1556

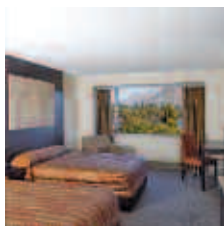
**Children** 0 to 12 years – free when sharing with an adult and using existing bedding.

**Max capacity** Studio/1 Bedroom – 2, 2 Bedroom – 5.

**HIGZQN**



## Copthorne Hotel &amp; Resort Lakefront Queenstown ★★★★★



A year-round resort located on the shores of Lake Wakatipu and within walking distance to central shopping, dining and entertainment.

Town Centre 500m  
Map page 71 Ref. 24

Corner Adelaide Street and Frankton Road, Queenstown

## PROPERTY FEATURES:

- 24 hour reception
- Restaurant ■ Bar
- Room service (24 hour)
- Spa
- Internet access (wireless)
- Parking (undercover)

## ACCOMMODATION FEATURES:

- Tea/coffee making facilities
- Mini bar
- Cable TV
- Internet access (broadband)
- Hair dryer

Room serviced daily

From **\$91** PER ROOM PER NIGHT\*

1 – 30 APR, 1 JUL – 30 SEP, 26 – 31 OCT, ADULTS	1 NT	3 NTS	5 NTS
1 – 28 DEC 11, 3 – 31 JAN 12			
Standard	1 to 2	157	471
Standard Lakeview/Superior	1 to 2	170	509
1 MAY – 30 JUN 11	ADULTS	1 NT	3 NTS
Standard	1 to 2	121	362
Standard Lakeview/Superior	1 to 2	139	416
1 – 30 NOV 11, 1 FEB – 31 MAR 12	ADULTS	1 NT	3 NTS
Standard	1 to 2	182	544
Standard Lakeview/Superior	1 to 2	194	580

Other prices apply 29 Dec 11 – 2 Jan 12 and Rugby World Cup.

**Children** 0 to 13 years – free when sharing with an adult and using existing bedding.

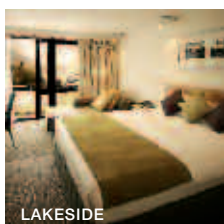
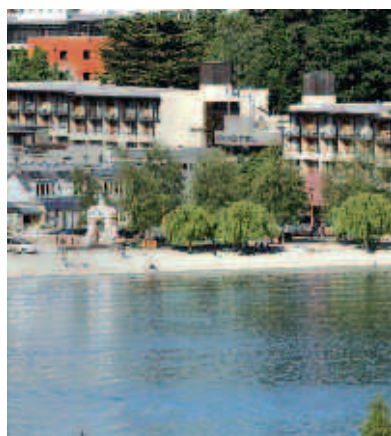
**Max capacity** 3 adults or 2 adults/2 children.

COPZQN

## TRAVELPOINT BONUS

FREE Night Offer: Stay 4 nights, pay for 3.

## Novotel Queenstown Lakeside ★★★★★



A stylish hotel located on the stunning lakefront in the heart of Queenstown, only steps away from shops, restaurants and activities.

Town Centre 100m  
Map page 71 Ref. 19

Cnr Earl St and Marine Pde, Queenstown

## PROPERTY FEATURES:

- Restaurant ■ Café ■ Bar
- Room service (24 hour)
- Spa ■ Internet facilities
- Laundry/dry cleaning service
- Parking (valet) ■ Non smoking

## ACCOMMODATION FEATURES:

- Balcony ■ Tea/coffee making facilities
- Mini bar ■ Cable TV
- In-room movies (pay to view)
- Internet access (broadband)
- Ironing facilities ■ Hair dryer

Room serviced daily



From **\$95** PER ROOM PER NIGHT\*

1 APR – 30 JUN 11^	ADULTS	1 NT	4 NTS	5 NTS
Novotel Guest Room Lakeside	1 to 2	127	379	505
1 JUL – 31 AUG, 1 NOV – 27 DEC 11, 3 – 31 JAN 12+	ADULTS	1 NT	3 NTS	5 NTS
Novotel Guest Room Lakeside	1 to 2	165	494	824
1 SEP – 31 OCT 11, 1 FEB – 31 MAR 12	ADULTS	1 NT	3 NTS	5 NTS
Novotel Guest Room Lakeside	1 to 2	194	580	966
	1 to 2	257	769	1281

Other prices apply 28 Dec 11 – 2 Jan 12.

**Children** 0 to 15 years – up to 2 children free when sharing with 2 adults and using existing bedding.

**Max capacity** 3 adults or 2 adults/2 children.

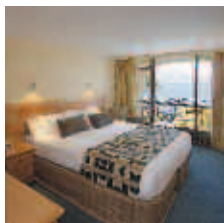
NOVZQN

## TRAVELPOINT BONUS

^ FREE Night Offer: Stay 4 nights, pay for 3.  
(4 and 5 night prices include 1 free night)

+ FREE NZD100 meal credit per room for stays of 4 nights.

## Rydges Lakeland Resort Queenstown ★★★★★



Queenstown's largest hotel is situated on the shores of beautiful Lake Wakatipu, with views over the lake and surrounding mountains.

Town Centre 300m  
Map page 71 Ref. 5

38-54 Lake Esplanade, Queenstown

## PROPERTY FEATURES:

- 24 hour reception
- Restaurant ■ Bar
- Room service (limited)
- Pool (heated outdoor) ■ Spa
- Internet facilities (broadband)
- Parking

## ACCOMMODATION FEATURES:

- Heating
- Tea/coffee making facilities
- Mini bar ■ Cable TV
- Ironing facilities ■ Hair dryer

Room serviced daily



From **\$127** PER ROOM PER NIGHT\*

1 APR – 30 JUN 11	ADULTS	1 NT	3 NTS	5 NTS
Superior Lakeview	1 to 2	127	379	631
Deluxe Lakeview	1 to 2	142	426	710
1 JUL – 31 AUG 11	ADULTS	1 NT	3 NTS	5 NTS
Superior Lakeview	1 to 2	156	466	777
Deluxe Lakeview	1 to 2	177	530	883
1 NOV 11 – 31 MAR 12	ADULTS	1 NT	3 NTS	5 NTS
Superior Lakeview	1 to 2	184	551	918
Deluxe Lakeview	1 to 2	205	615	1025

Other prices apply for Rugby World Cup. Lakeview Suite and Room and Breakfast prices also available.

**Children** 0 to 12 years – up to 2 children free when sharing with an adult and using existing bedding. Cot free of charge.

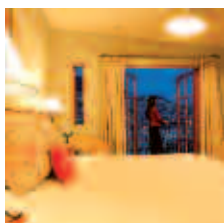
**Max capacity** 4.

RYDZQN

## TRAVELPOINT BONUS

FREE Night Offer: Stay 4 nights, pay for 3, valid 1 Apr – 30 Jun, 1 Nov – 31 Dec 11.

## Browns Boutique Hotel ★★★★★☆



A stylish boutique hotel in a quiet central location with stunning views, just two minutes walk to the town centre using a private access way.

Town Centre 800m  
Map page 71 Ref. 10

26 Isle Street, Queenstown

## PROPERTY FEATURES:

- Fireplace ■ DVD library ■ Patio
- Internet access (wireless)
- Dining room ■ Guest lounge
- Laundry service ■ Safety deposit box
- Parking ■ Non smoking

## ACCOMMODATION FEATURES:

- French doors ■ Balcony or patio
- Fan ■ Tea/coffee making facilities
- Refrigerator ■ CD/DVD player
- Ironing facilities
- Bathrobes ■ Hair dryer

Room serviced daily



From **\$209** PER ROOM PER NIGHT\*

1 – 30 APR 11	ADULTS	1 NT	3 NTS	5 NTS
Deluxe	1 to 2	254	762	1269
1 MAY – 30 SEP 11	ADULTS	1 NT	3 NTS	5 NTS
Deluxe	1 to 2	209	627	1044
1 OCT 11 – 31 MAR 12	ADULTS	1 NT	3 NTS	5 NTS
Deluxe	1 to 2	272	816	1360

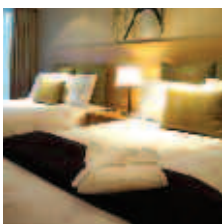
**Includes** Light breakfast daily.

**Children** 0 to 11 years – free when sharing with an adult and using existing bedding.

**Max capacity** 2.

BROZQN

## Crowne Plaza Queenstown ★★★★★



Centrally located, right in the heart of Queenstown boasting spectacular views and complemented by world class facilities and unique dining.

Town Centre 50m  
Map page 71 Ref. 9

Beach Street, Queenstown

### PROPERTY FEATURES:

- 24 hour reception ■ Restaurant ■ Bar
- Café ■ Room service (24 hour)
- Internet access (wireless) ■ Sauna
- Fireplace ■ Guest laundry ■ Parking
- Laundry/dry cleaning service

### ACCOMMODATION FEATURES:

- Air-conditioning ■ Balcony
- Tea/coffee making facilities ■ Mini bar
- In-room movies (pay to view) ■ Cable TV
- Internet access (broadband)
- Ironing facilities ■ Safe ■ Hair dryer

Room serviced daily



From **\$137** PER ROOM PER NIGHT\*

1 APR – 30 JUN 11	ADULTS	1 NT	3 NTS	6 NTS
Courtyard Lake View^	1 to 2	164	490	979
	1 to 2	205	409	817
1 JUL – 8 SEP, 12 SEP, 19 – 22 SEP, 26 – 30 SEP, 4 OCT – 29 DEC 11	ADULTS	1 NT	3 NTS	5 NTS
Courtyard Lake View	1 to 2	193	577	962
	1 to 2	250	750	1249
2 JAN – 31 MAR 12	ADULTS	1 NT	3 NTS	5 NTS
Courtyard Lake View	1 to 2	237	710	1182
	1 to 2	328	984	1639

Other prices apply 30 Dec 11 – 1 Jan 12 and Rugby World Cup. Mountain View room and Room and Breakfast prices also available.

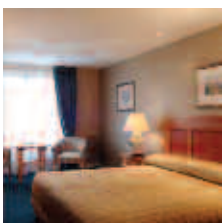
**Children** 0 to 19 years – free when sharing with an adult and using existing bedding. Cot free of charge.

**Max capacity** 3 adults or 2 adults/2 children. **CROZQN**

### TRAVELPOINT BONUS

^ FREE Night Offer: Stay 3 nights, pay for 2 or Stay 6 nights pay for 4. (3 and 6 night prices include 1 free night)

## Millennium Hotel Queenstown ★★★★★



Located in the heart of Queenstown close to the central shopping and entertainment area; the hotel is elegantly and classically furnished.

Town Centre 1km  
Map page 71 Ref. 23

Cnr Frankston Rd and Stanley St, Queenstown

### PROPERTY FEATURES:

- 24 hour reception ■ Restaurant ■ Bar
- Room service (24 hour) ■ Gymnasium
- Internet access (wireless) ■ Sauna
- Spa ■ Laundry/dry cleaning service
- Lift ■ Parking (undercover)
- Courtesy shuttle to town centre (9am to 9pm)

### ACCOMMODATION FEATURES:

- Air-conditioning ■ Ironing facilities
- Tea/coffee making facilities
- Mini bar ■ Internet access (broadband)
- In-room movies (pay to view) ■ Hair dryer

Room serviced daily



From **\$109** PER ROOM PER NIGHT\*

1 – 30 APR, 1 JUL – 30 SEP, 26 – 31 OCT, 1 DEC 11 – 31 JAN 12	ADULTS	1 NT	3 NTS	5 NTS
Superior	1 to 2	172	516	859
1 MAY – 30 JUN 11	ADULTS	1 NT	3 NTS	5 NTS
Superior	1 to 2	145	435	725
1 – 30 NOV 11, 1 FEB – 31 MAR 12	ADULTS	1 NT	3 NTS	5 NTS
Superior	1 to 2	206	617	1029

Other prices apply 29 Dec 11 – 2 Jan 12 and Rugby World Cup.

**Children** 0 to 13 years – free when sharing with 2 adults and using existing bedding.

**Max capacity** 3. **MILZQN**

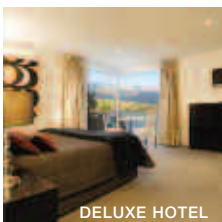
### TRAVELPOINT BONUS

FREE Night Offer: Stay 4 nights, pay for 3.

FREE breakfast for 2 adults for stays of 3 nights or more.

Offer valid 1 Apr – 30 Sep, 26 Oct 11 – 31 Jan 12 and are not combinable.

## Oaks Club Resort ★★★★★



Offering a range of contemporary hotel and apartment style accommodation with breathtaking views of Lake Wakatipu.

Town Centre 500m  
Map page 71 Ref. 27

171-179 Frankton Road, Queenstown

### PROPERTY FEATURES:

- Gymnasium ■ Sauna
- Laundry service ■ Lift
- Parking (undercover security)
- Non smoking

### ACCOMMODATION FEATURES:

- Balcony
- Kitchen with microwave (Apartments)
- Cable TV
- CD/DVD player (Apartments)
- Internet access (broadband)
- Ironing facilities ■ Hair dryer

Room serviced daily



From **\$119** PER ROOM PER NIGHT\*

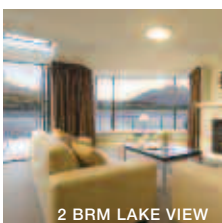
1 APR – 24 JUN, 30 SEP – 22 DEC 11, 8 JAN – 31 MAR 12	ADULTS	1 NT	2 NTS	7 NTS
Hotel	1 to 2	139	254	833
Deluxe Hotel	1 to 2	139	254	833
2 Bedroom	1 to 4	253	483	1633
2 Bedroom Lake View	1 to 4	273	522	1771
3 Bedroom Lake View	1 to 6	390	755	2587
25 JUN – 29 SEP, 23 DEC 11 – 7 JAN 12	ADULTS	2 NTS	4 NTS	7 NTS
Hotel	1 to 2	309	618	1026
Deluxe Hotel	1 to 2	428	855	1440
2 Bedroom	1 to 4	583	1166	1986
2 Bedroom Lake View	1 to 4	631	1261	2151
3 Bedroom Lake View	1 to 6	910	1819	3127

4 night minimum stay applies 25 Jun – 4 Sep 11. 3 night minimum stay applies 23 Dec 11 – 7 Jan 12. 1 night prices 5 – 29 Sep 11 and 4 Bedroom Lake View prices also available.

**Children** 0 to 11 years – free when sharing with an adult and using existing bedding.

**Max capacity** Hotel/Deluxe Hotel – 2, 2 Bedrooms – 4, 3 Bedroom – 6. **OACZQN**

## Oaks Shores ★★★★★



Located on Lake Wakatipu, with spacious hotel and apartment style accommodation, only a short distance from world-class ski fields.

Town Centre 700m  
Map page 71 Ref. 29

327-343 Frankton Road, Queenstown

### PROPERTY FEATURES:

- 24 hour reception
- Gymnasium ■ Sauna
- Laundry service
- Parking (undercover)

### ACCOMMODATION FEATURES:

- Balcony ■ Cable TV
- Kitchen with microwave and dishwasher (Apartments)
- CD/DVD player (Apartments)
- Internet access (broadband)
- Ironing facilities ■ Hair dryer

Room serviced daily



From **\$119** PER ROOM PER NIGHT\*

1 APR – 24 JUN, 30 SEP – 22 DEC 11, 8 JAN – 31 MAR 12	ADULTS	1 NT	2 NTS	7 NTS
Hotel	1 to 2	139	254	833
1 Bedroom Lake View	1 to 2	189	353	1181
2 Bedroom Courtyard Loft	1 to 4	253	483	1633
2 Bedroom Lake View	1 to 4	273	522	1771
3 Bedroom Lake View	1 to 6	390	755	2587
25 JUN – 29 SEP, 23 DEC 11 – 7 JAN 12	ADULTS	2 NTS	4 NTS	7 NTS
Hotel	1 to 2	309	618	1026
1 Bedroom Lake View	1 to 2	428	855	1440
2 Bedroom Courtyard Loft	1 to 4	583	1166	1986
2 Bedroom Lake View	1 to 4	631	1261	2151
3 Bedroom Lake View	1 to 6	910	1819	3127

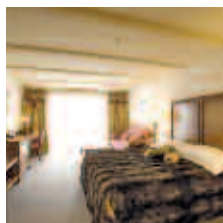
4 night minimum stay applies 25 Jun – 4 Sep 11. 3 night minimum stay applies 23 Dec 11 – 7 Jan 12. 1 night prices 5 – 29 Sep 11 and 4 Bedroom Penthouse prices also available.

**Children** 0 to 11 years – free when sharing with an adult and using existing bedding.

**Max capacity** Hotel/1 Bedroom – 2, 2 Bedrooms – 4, 3 Bedroom – 6. **OAKZQN**



## Distinction Nugget Point Boutique Hotel ◆◆◆◆◆



Stunning boutique hotel style accommodation located on the shores of Lake Wakatipu, overlooking the famous Shotover River.

Town Centre 6km  
Map page 71 Ref. 14

146 Arthurs Point Road, Queenstown

### PROPERTY FEATURES:

- 24 hour reception ■ Restaurant ■ Café
- Bar ■ Room service (limited)
- Barbecue area ■ Gymnasium
- Squash court ■ Tennis court
- Internet access (wireless)
- Laundry/dry cleaning service
- Courtesy shuttle bus to town centre

### ACCOMMODATION FEATURES:

- Fan ■ Balcony or patio
- Tea/coffee making facilities
- Internet access (wireless)
- Cable TV ■ CD/DVD player
- Spa bath (Superior River View Rooms)

Room serviced daily

From **\$242** PER ROOM PER NIGHT\*

1 MAY – 30 SEP 11	ADULTS	1 NT	3 NTS	5 NTS
Garden View	1 to 2	242	726	1210
River View	1 to 2	268	804	1340
Superior River View	1 to 2	373	1118	1864
2 Bedroom River View	1 to 4	420	1260	2100
1 OCT 11 – 31 MAR 12	ADULTS	1 NT	3 NTS	5 NTS
Garden View	1 to 2	268	804	1340
River View	1 to 2	342	1024	1706
Superior River View	1 to 2	468	1402	2336
2 Bedroom River View	1 to 4	583	1749	2915

Other prices apply 1 – 30 Apr 11.

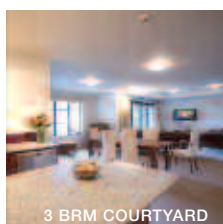
Includes	Full breakfast daily.
----------	-----------------------

**Children** 0 to 12 years – 1 child free when sharing with an adult and using existing bedding.

**Max capacity** Garden View/River View/Superior River View – 2, 2 Bedroom River View – 4.

**NUGZQN**

## The Glebe Apartments ★★★★★



Ideally located in the heart of Queenstown overlooking beautiful Lake Wakatipu, offering self-contained and spacious apartments.

Town Centre 300m  
Map page 71 Ref. 17

1 Beetham Street, Queenstown

### PROPERTY FEATURES:

- Barbecue area ■ Sauna ■ Steam room
- Gymnasium ■ Guest lounge
- DVD library ■ Sony PlayStation hire
- Dry cleaning service
- Parking (undercover security)
- Lift ■ Non smoking

### ACCOMMODATION FEATURES:

- Fan ■ Patio ■ Cable TV
- Kitchen with microwave and dishwasher
- CD/DVD player
- Internet access (wireless)
- Ironing facilities ■ Washer/dryer

Apartment serviced daily



From **\$188** PER ROOM PER NIGHT\*

1 APR – 15 AUG 11	ADULTS	1 NT	3 NTS	5 NTS
1 Bedroom Courtyard	1 to 2	192	575	958
2 Bedroom Courtyard	1 to 4	252	754	1257
2 Bedroom Mountain/Lake View	1 to 4	287	861	1434
2 Bedroom 2 Bathroom	1 to 4	293	877	1462
3 Bedroom Courtyard	1 to 6	327	981	1635
3 Bedroom Mountain/Lake View	1 to 6	424	1270	2116
16 AUG 11 – 31 MAR 12	ADULTS	1 NT	3 NTS	5 NTS
1 Bedroom Courtyard	1 to 2	188	563	938
2 Bedroom Courtyard	1 to 4	249	747	1245
2 Bedroom Mountain/Lake View	1 to 4	289	866	1442
2 Bedroom 2 Bathroom	1 to 4	289	866	1442
3 Bedroom Courtyard	1 to 6	323	967	1612
3 Bedroom Mountain/Lake View	1 to 6	407	1220	2033

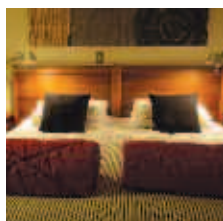
Other room types also available.

**Children** 0 to 1 years – cot/bed charge payable direct.  
2 to 14 years – adult prices apply.

**Max capacity** 1 Bedroom – 2, 2 Bedrooms – 5, 3 Bedrooms – 7.

**GLEZQN**

## Hotel St Moritz ★★★★★



A stylish hotel superbly positioned in a spectacular mountain and lake setting, within walking distance of Queenstown's attractions.

Town Centre 1.5km  
Map page 71 Ref. 7

10-18 Brunswick Street, Queenstown

### PROPERTY FEATURES:

- 24 hour reception ■ Restaurant
- Bar ■ Room service (24 hour)
- Fitness centre ■ Sauna ■ Jacuzzi
- Internet access (wireless)
- Laundry/dry cleaning service
- Parking (valet)

### ACCOMMODATION FEATURES:

- Tea/coffee making facilities
- Mini bar ■ Cable TV
- In-room movies (pay to view)
- Internet access (wireless)
- Ironing facilities ■ Hair dryer

Room serviced daily



From **\$152** PER ROOM PER NIGHT\*

1 APR – 30 JUN 11^	ADULTS	1 NT	3 NTS	5 NTS
St Moritz Guest Room	1 to 2	190	568	757
1 JUL – 31 AUG 11, 1 – 27 DEC 11, 3 – 31 JAN 12	ADULTS	1 NT	3 NTS	5 NTS
St Moritz Guest Room	1 to 2	217	650	1084
1 SEP – 30 NOV 11, 1 FEB – 31 MAR 12	ADULTS	1 NT	3 NTS	5 NTS
St Moritz Guest Room	1 to 2	229	686	1143

Other prices apply 28 Dec 11 – 2 Jan 12. Lakeview, 1 Bedroom Alpine Suite and 2 Bedroom prices also available.

**Children** 0 to 11 years – free when sharing with 2 adults and using existing bedding.

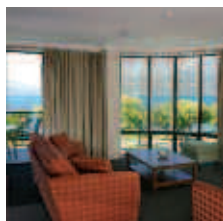
**Max capacity** 3. **STMZQN**

### TRAVELPOINT BONUS

^ FREE Night Offer: Stay 5 nights, pay for 4.  
(5 night price includes 1 free night)

^ FREE upgrade to a Lake View room or 1 Bedroom Alpine Suite (subject to availability).

## Peppers Beacon ★★★★★



A stylish resort located on the shores of Lake Wakatipu offering superb garden, lake or mountain views.

Town Centre 200m  
Map page 71 Ref. 6

33 Lake Esplanade, Queenstown

### PROPERTY FEATURES:

- 24 hour reception
- Barbecue area
- Restaurant (breakfast only)
- Gymnasium ■ Spa ■ Sauna
- Laundry/dry cleaning service
- Parking (undercover security)

### ACCOMMODATION FEATURES:

- Tea/coffee making facilities
- Cable TV
- Internet access (broadband)
- Ironing facilities ■ Hair dryer

Room serviced daily



From **\$126** PER ROOM PER NIGHT\*

1 APR – 24 JUN 11	ADULTS	1 NT	3 NTS	5 NTS
Hotel	1 to 2	157	376	627
Studio	1 to 2	173	424	706
1 Bedroom Suite	1 to 2	205	518	863
2 Bedroom Garden Suite	1 to 4	228	589	981
3 Bedroom Hotel/3 Bedroom Studio	1 to 6	437	1215	2025
25 JUN – 16 OCT, 23 OCT 11 – 31 MAR 12	ADULTS	1 NT	3 NTS	5 NTS
Hotel	1 to 2	208	565	942
Studio	1 to 2	223	613	1021
1 Bedroom Suite	1 to 2	255	707	1178
2 Bedroom Garden Suite	1 to 4	279	778	1296
3 Bedroom Hotel/3 Bedroom Studio	1 to 6	487	1404	2340

Other prices apply 17 – 22 Oct 11. 2 Bedroom Lakeview Suite, 2 Bedroom Junior Suite and 4 Bedroom Penthouse prices also available.

**Children** 0 to 12 years – free when sharing with an adult and using existing bedding.

**Max capacity** Hotel/Studio/1 Bedroom Suite – 2, 2 Bedroom Garden Suite – 4, 3 Bedroom Hotel/3 Bedroom Studio – 6. **PEPZQN**



## Sofitel Queenstown Hotel & Spa ★★★★★



8 Duke Street, Queenstown

French antique chic sits aside New Zealand's sophisticated modern designs at this centrally located boutique hotel. Providing exceptional personal service, the hotel truly embodies the Sofitel concept 'art de vivre' – the art of living. The lobby and lounge flow into a resplendent reception enclave, invoking the panache of Paris and warm hospitality inherent to any Queenstown stay.

Hotel facilities include signature restaurant, Vie, intimate Nue Lounge and luxurious Left Bank Café – part French kitchen, part tea room – open for breakfast and lunch in charming Paris fashion. The 'piece de resistance' is LeSpa, a relaxing haven where mind, body and spirit unite.

### PROPERTY FEATURES:

- LeSpa Day Spa ■ Restaurant
- Bar ■ Room service (24 hour)
- Fitness centre ■ Spa
- Internet access (wireless)
- Laundry/dry cleaning service
- Parking (valet)

### ACCOMMODATION FEATURES:

- Air-conditioning ■ Underfloor heating
- Spa bath (double with TV)
- Tea/coffee making facilities
- In-room movies (pay to view)
- Mini bar ■ Cable TV
- Internet access (wireless and broadband)
- Ironing facilities ■ Hair dryer
- Evening turndown service

Room serviced daily

Town Centre 230m

Map page 71 Ref. 12



From **\$259** PER ROOM PER NIGHT\*



1 APR – 30 JUN 11 <sup>^</sup>	ADULTS	1 NT	3 NTS	7 NTS
Superior Spa	1 to 2	259	776	1809
Executive Spa	1 to 2	440	1319	3078
Sofitel Spa Suite	1 to 2	621	1863	4346
1 JUL – 26 DEC 11, 3 JAN – 31 MAR 12	ADULTS	1 NT	3 NTS	5 NTS
Superior Spa <sup>+</sup>	1 to 2	428	1282	2136
Executive Spa	1 to 2	609	1825	3042
Sofitel Spa Suite	1 to 2	788	2364	3940
27 DEC 11 – 2 JAN 12	ADULTS	1 NT	3 NTS	7 NTS
Superior Spa	1 to 2	658	1972	4600
Executive Spa	1 to 2	838	2513	5863
Sofitel Spa Suite	1 to 2	1019	3057	7131

Penthouse Suite prices also available.

**Children** 0 to 11 years – 1 child free when sharing with an adult and using existing bedding.

**Max capacity** 3.

**SOFZQN**

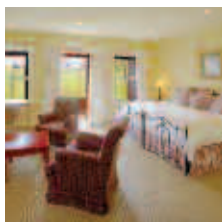
### TRAVELPOINT BONUS

<sup>^</sup> FREE NZD100 food and beverage voucher per room for stays of 3 nights or more.

<sup>+</sup> FREE Night Offer: Stay 6 nights, pay for 5, valid 15 Jun – 15 Sep 11.

FREE TSS Earnslaw cruise for 2 adults for stays of 3 nights or more, valid 1 Oct – 30 Nov 11.

## Millbrook Resort, Arrowtown ★★★★★



A golf resort with outstanding facilities set in 500 acres of park-like grounds and surrounded by stunning alpine scenery.

Shop 2km  
Queenstown 20km  
Map page 71 Ref. 13

Malaghans Road, Arrowtown

### PROPERTY FEATURES:

- Golf course (27 hole) ■ Day spa
- 24 hour reception ■ Restaurant
- Café ■ Room service (limited)
- Pools (4) ■ Sauna ■ Spa
- Tennis court ■ Gymnasium
- Bicycle hire ■ Internet access (wireless)
- Shuttle bus to Queenstown (7am to 11pm)

### ACCOMMODATION FEATURES:

- Fireplace ■ Tea/coffee making facilities
- Mini bar ■ Cable TV ■ Ironing facilities
- Kitchen with microwave and dishwasher (2 Bedroom Cottages)

Room serviced daily



From **\$158** PER ROOM PER NIGHT\*

1 – 30 APR, 1 JUL – 31 AUG, 1 NOV – 20 DEC 11	ADULTS	1 NT	3 NTS	5 NTS
Village Inn	1 to 2	201	603	1005
Villa Suite	1 to 2	280	840	1399
2 Bedroom Cottage	1 to 4	N/A	1154	1923
1 MAY – 30 JUN 11	ADULTS	1 NT	3 NTS	5 NTS
Village Inn	1 to 2	158	473	788
Villa Suite	1 to 2	233	698	1163
2 Bedroom Cottage	1 to 4	N/A	965	1608
1 SEP – 31 OCT, 21 DEC 11 – 31 MAR 12	ADULTS	1 NT	3 NTS	5 NTS
Village Inn	1 to 2	241	721	1202
Villa Suite	1 to 2	296	887	1478
2 Bedroom Cottage	1 to 4	N/A	1274	2124

2 night minimum stay applies 30 Dec 11 – 2 Jan 12. Other room types also available.

**Children** 0 to 12 years – free when sharing with an adult and using existing bedding. Cot free of charge.

**Max capacity** Village Inn – 2, Villa Suite – 2 adults or 1 adult/2 children, 2 Bedroom Cottage – 4 adults or 3 adults/2 children.

**MBRZQN**



The Remarkables, Queenstown

## Skyline Gondola



An easy five minute walk from central Queenstown, the Skyline Gondola carries you high above Queenstown. Sit back and relax as the views unfold while you journey to the Skyline complex. Enjoy the vistas from numerous observation decks including Coronet Peak, The Remarkables, Queenstown, Lake Wakatipu to Cecil and Walter Peaks.

The Skyline Restaurant serves up a mouth-watering buffet nightly. Feast on South Island salmon, seafoods, salads, roast meats and delicious desserts. Tiered seating guarantees stunning views from every table.

Journey through the mythical legends and step into the world of Maori with a unique live show. Experience the fearsome haka and the stunning poi display. Feel the spirit and history celebrated in traditional song and dance.

**INCLUDES:**

- Return scenic gondola ride
- Kiwi haka performance (Gondola, Dinner and Haka)
- Buffet dinner including desserts (Gondola and Dinner, Gondola, Dinner and Haka)

**Operates:** Daily  
Gondola: 9am to late  
Dinner: Set sitting times between 5:45pm – 8:45pm  
Dinner and Haka: Set times between 5:15pm – 8pm

PRICE:	1 APR – 30 SEP 11		1 OCT 11 – 31 MAR 12	
	ADULT	CHILD 5-14 YEARS	ADULT	CHILD 5-14 YEARS
Gondola	\$19	\$10	\$20	\$12
Gondola and Dinner	\$59	\$28	\$60	\$29
Gondola, Dinner and Haka	\$86	\$42	\$87	\$43

Order of dinner and haka performance may vary.

SKYLINE GONDOLA AND RESTAURANT

SKYZQN

## Shotover Jet



Nothing will prepare you for the thrill and excitement of a Shotover Jet ride; it's an adrenaline rush you'll never forget! From the moment the accelerator hits the floor your adrenaline hits the roof as you speed in mere centimetres of water along the famous Shotover River and deep into the spectacular Shotover River Canyons.

As the rocky walls tower over you, your expert driver puts the 'Big Red' through its paces and skilfully whips the jet boat past rocky outcrops, skims around crags and boulders and through the narrow canyons at breathtaking speeds. Then hold on tight for the famous Shotover Jet full 360 degree spins, where your driver spins a full 360 degrees within the boat's own length and keeps speeding along the river.

**INCLUDES:**

- 25 minute jet boat ride
- Use of life jackets and full length spray jackets
- Return transfers from Queenstown Station Building

**Departs:** Daily from The Station, Corner Camp and Shotover Streets, Queenstown every 15 minutes between 9am and 4:30pm

**Duration:** 1 hour 30 minutes

**PRICE:**

Adult	\$94
Child 5-15 years	\$54

SHOTOVER JET

SHOZQN

## Dart River Jet Safari



Enjoy the excitement of river jet boating and witness the breathtaking scenery of Lake Wakatipu, the pristine Dart River Valley and spectacular Mount Aspiring National Park. Choose between two amazing safari options.

The Wilderness Safari allows you to discover the magnificent area through jet boating, a guided walk and a picturesque drive. Immerse yourself in the surroundings of snow capped mountains, ancient native forest, waterfalls, glacial valleys and see some of the scenery from the 'Lord of the Rings' movies.

The Funyak Safari begins with an exhilarating jet boat ride up the Dart River, then a journey in the unique 'Funyak' canoes. Paddle and drift downstream taking in the awe-inspiring sights while discovering hidden streams and rock pools. Enjoy a delicious buffet lunch amongst the ancient beech forest.

**INCLUDES:**

- Life jacket and spray jacket
- Jet boat ride
- Buffet lunch (Funyak Safari)

**Departs:** Daily from Queenstown  
Wilderness Safari: 8am, 12 noon (Apr – May, Oct – Mar), 8am (Jun – Sep)  
Funyak Safari: 8am

**Duration:** Wilderness Safari: 6 hours  
Funyak Safari: 9 hours

PRICE:	1 APR – 30 SEP 11		1 OCT 11 – 31 MAR 12	
	ADULT	CHILD 5-15 YEARS	ADULT	CHILD 5-15 YEARS
Wilderness Safari	\$169	\$87	\$173	\$94
Funyak Safari	\$228	\$149	\$228	\$149

Family prices also available.

DART RIVER JET SAFARIS

DRSZQN

## Shotover River Rafting



Take the winding road up into Skippers Canyon, famous for its incredible twists and turns, tight corners and exciting cliff edges. Rafting from Deep Creek over peaceful waters, head towards the exhilarating rapids of the lower canyon. The adrenaline pumps as you paddle Rock Garden, Sharks Fin, Toilet, Pinball and Jaws to name but a few. Raft the 170 metre Oxenbridge Tunnel before shooting Cascade Rapid to complete your adventure. No experience is required. Before returning to Queenstown, enjoy a sauna and hot shower at Cavell's Rafting base.

Or take the Triple Challenge – a great value outdoor adventure package, combining three awesome activities: the exhilarating Shotover Jet, an action-packed helicopter ride and an adrenaline fuelled white water rafting adventure.

**INCLUDES:**

- Rafting on the Shotover River
- Wetsuit rafting clothing and safety equipment
- Extensive safety briefing
- Return transfers from Queenstown accommodation

**TRIPLE CHALLENGE ALSO INCLUDES:**

- Shotover jet boat ride
- Helicopter transfer to rafting start point

**Departs:** From Queenstown Rafting Shop, 35 Shotover Street, Queenstown  
River Rafting: Daily at 8:15am, 1:15pm (Apr – May, Oct – Mar)  
Triple Challenge: Daily at 7:30am, 12:15pm (Apr – May, Oct – Mar), 8:15am, 12:15pm (Jun – Sep)

**Duration:** 4 hours 30 minutes

PRICE:	RIVER RAFTING		TRIPLE CHALLENGE	
	1 APR – 31 MAY 11	1 OCT 11 – 31 MAR 12	1 APR – 30 SEP 11	1 OCT 11 – 31 MAR 12
Adult	\$146	\$154	\$295	\$311

Not suitable for children under 13 years.

QUEENSTOWN RAFTING

QRLZQN



# Tours from Queenstown

## TSS Earnslaw and Walter Peak High Country Farm



Relive the elegance of turn-of-the-century travel with a cruise on board the vintage steamship TSS Earnslaw. Today, the TSS Earnslaw is believed to be the largest and only coal-fired passenger carrying vessel still operating in the southern hemisphere. Travel across Lake Wakatipu to Walter Peak High Country Farm to experience New Zealand's farming lifestyle. On the lunch tour, explore the farm and join in the farmyard walking tour, which includes dog handling and sheep shearing demonstrations as well as a barbecue lunch cooked on the terrace in front of the homestead.

On the evening dinner tour, enjoy a traditional carvery style buffet in the Colonel's Homestead at Walter Peak. The buffet features New Zealand specialties – roast meats and seafood followed by traditional desserts. Following the meal, there is the option of a brief farm show before returning on board the TSS Earnslaw to Queenstown.

### INCLUDES:

- 1 hour 30 minute scenic cruise ■ Farm tour and farm demonstration
- Barbecue lunch or evening dinner

**Departs:** Daily from Real Journeys Visitor Centre, Steamer Wharf, Queenstown  
Barbecue Lunch: 10am and 12 noon (1 – 15 Apr, 1 Oct 11 – 31 Mar 12),  
12 noon (16 Apr – 31 May, 1 – 30 Sep 11)  
Evening Dinner: 6pm (1 Apr – 31 May, 1 Oct 11 – 31 Mar 12)

**Duration:** Barbecue Lunch: 3 hours 30 minutes  
Evening Dinner: 4 hours

### PRICE:

	1 APR – 31 MAY, 1 – 30 SEP 11		1 OCT 11 – 31 MAR 12	
	BBQ LUNCH	EVENING DINNER	BBQ LUNCH	EVENING DINNER
Adult	\$71	\$91	\$75	\$95
Child 5-14 years	\$29	\$46	\$29	\$47

REAL JOURNEYS

REAQZN

## Shotover Canyon Swing



Shotover Canyon Swing is an intense, adrenaline stimulating activity achieved by launching from a 109 metre high cliff-mounted platform. Reach speeds of up to 150 kilometres per hour as the rocky cliff face rushes past in a 60 metre vertical freefall. The ropes then smoothly pendulum you into a giant 200 metre swing across the famous Shotover River.

There are two basic launch methods: jump yourself or be released from the special launch boom. With over 70 different solo and tandem jump styles, experienced staff will expertly manage the scariness for everyone – from knitting nana's to adrenaline junkies, there's a style for you!

Located only 15 minutes from Queenstown, there is no rushing, it's all about you and there is often time for more than one swing. Gravity is a toy, come out and play!

### INCLUDES:

- One jump on the Shotover Canyon Swing
- Small group with maximum of 9 jumpers
- Return transfers from Shotover Canyon Swing Shop

**Departs:** Daily from Shotover Canyon Swing Shop, 37 Shotover Street, Queenstown  
at 8:30am<sup>^</sup>, 9:30am, 11am, 12 noon, 2pm, 3pm, 4:30pm<sup>^</sup>, 5:30pm<sup>^</sup>

<sup>^</sup> Departure times subject to availability during May – Sep.

**Duration:** 2 hours 30 minutes

### PRICE:

Adult	\$157
Spectator	\$16
Time permitting, a second swing may available at an extra charge, payable direct.	

SHOTOVER CANYON SWING

SCSZQN

## AJ Hackett Bungy



The Kawarau Bridge Bungy is home to the original 43 metre bungy jump. The choice is yours: tandem or solo, bob above the water, touch it, or be fully immersed.

The Ledge Bungy allows you to enjoy the best views. Equipped with a 'runway', launch out 400 metres over Queenstown. Vary your jump style with numerous options designed to provide a different bungy experience. Or try it at night with the lights of Queenstown below!

For extreme highs, try The Nevis Bungy – 134 metres above the rugged Nevis River. After a 4WD drive through the backcountry, then with 8½ seconds of falling, it's a breathtaking rush like no other.

### INCLUDES:

- Bungy jump ■ T-shirt ■ Certificate
- Return transfers from the Station Building (except The Ledge Bungy)

**Departs:** Daily  
Kawarau Bridge Bungy: From Station Building at 9am, 12pm, 3pm  
The Ledge Bungy: From Skyline Gondola, on demand between 3pm – 7pm  
Nevis Bungy: From Station Building every 40 minutes between 8am – 2:30pm

**Duration:** Kawarau Bridge Bungy: 2 hours 30 minutes, The Ledge Bungy: 1 hour, Nevis Bungy: 4 hours

### PRICE:

	ADULT	CHILD 10-15 YEARS
Kawarau Bridge Bungy 43m	\$142	\$103
The Ledge Bungy 47m <sup>^</sup>	\$142	\$103
Nevis Bungy 134m	\$205	\$205

<sup>^</sup> Skyline Gondola must be purchased separately.

AJ HACKETT BUNGY

AJHZQN

## NZONE Skydive Queenstown



Queenstown is the premium place to jump out of a perfectly good aeroplane!

Choose to skydive from any of the following altitudes and freefall at a terminal velocity of 200 kilometres per hour! 9,000 feet for 25 seconds freefall, 12,000 feet for 45 seconds freefall or 15,000 feet for 60 seconds freefall.

Your flight to altitude will take you high above the Wakatipu basin where you will have a bird's-eye view of the dramatic mountains including the famous Remarkables and lakes. Jumping directly above the dropzone you will experience freefall of up to 60 seconds before your Tandem Master deploys the parachute and together you glide back to earth. The canopy ride takes approximately five minutes.

It takes courage to jump from an aircraft into thin air, but Nzone know a thing or two about how to give you the thrill of a lifetime with the highest level of operation and customer satisfaction. This is a skydiving experience that will not be forgotten... achievement doesn't come sweeter!

### INCLUDES:

- Scenic flight over Queenstown ■ All equipment and gear
- Experienced Tandem Master

**Departs:** Daily from Nzone Skydive Centre, 35 Shotover Street, hourly between 8:30am – 2:30pm

**Duration:** 3 hours

### PRICE:

	9,000 FEET	12,000 FEET	15,000 FEET
Adult	\$212	\$259	\$338

Maximum weight 100kg per person applies.

NZONE SKYDIVE

NZOZQN



## Milford Sound Nature Cruise



Journey by coach from Queenstown, via the Milford Road between Te Anau and Milford, and experience one of the finest alpine drives in the world offering magnificent scenery. Stop for short walks and plenty of photo opportunities along the way.

Join an extended leisurely and relaxing two hour nature cruise of Milford Sound. An on board nature guide with specialist knowledge of the region's history, flora and fauna provides detailed interpretation with a roving microphone.

There is plenty of time available to explore points of interest and view stunning scenery including waterfalls, rainforest and the towering peaks. Keep a look out for wildlife including seals, dolphins and penguins when in season.

### INCLUDES:

- 2 hour 15 minute nature cruise at Milford Sound
- Full commentary ■ Picnic lunch (optional extra)
- Tea and coffee ■ Return transfers from Queenstown accommodation

**Departs:** Daily from Real Journeys Visitor Centre, Steamer Wharf, Queenstown at 6:55am (May – Sep), 7:30am (Oct – Apr)

**Returns:** 7:30pm (May – Sep), 8:30pm (Oct – Apr)

PRICE:	1 APR – 30 SEP 11		1 OCT 11 – 31 MAR 12	
	NO LUNCH	WITH LUNCH	NO LUNCH	WITH LUNCH
Adult	\$181	\$194	\$192	\$203
Child 5-14 years	\$91	\$103	\$96	\$109

Scenic flight transfer from Milford Sound also available.

REAL JOURNEYS

REAQZN

## Milford Sound Overnight Cruise



An overnight cruise in Milford Sound on board the Milford Mariner is the ultimate dinner, bed and breakfast experience. Departing Queenstown by coach, enjoy a relaxing trip along the shores of Lake Wakatipu and rolling countryside to Te Anau and along the spectacular Milford Road. At Milford Sound, board the vessel and settle in to a private cabin with ensuite bathroom. The Milford Mariner cruises the length of Milford Sound to the Tasman Sea offering stunning views of waterfalls, wildlife, rainforest and mountains with commentary from an experienced on board nature guide. The vessel features spacious deck areas for viewing the wilderness scenery and seasonal wildlife, such as fur seals, dolphins and rare penguins. Anchor overnight in a sheltered cove with kayaking and tender craft excursions available. Enjoy a three course dinner and cooked breakfast before cruising the sound back to Milford Sound Wharf and returning back to Queenstown by coach.

### INCLUDES:

- Scenic cruise on Milford Sound ■ On board accommodation
- Use of linen and bath towels ■ Buffet dinner ■ Full breakfast
- Return transfers from Queenstown accommodation

**Departs:** From Real Journeys Visitor Centre, Steamer Wharf, Queenstown at 9am Mon, Wed, Fri (May, Sep), Daily (Oct – Apr),

**Returns:** 3:30pm

PRICE PER PERSON:	1 APR – 31 MAY, 1 – 30 SEP 11	1 – 31 OCT 11	1 NOV 11 – 31 MAR 12
Adult twin share	\$349	\$366	\$523
Adult sole use	\$579	\$548	\$827
Child 5-14 years	\$174	\$183	\$262

Milford Wanderer twin share with shared facilities and scenic flight from Milford Sound also available.

REAL JOURNEYS

REAQZN

## Discover Milford Sound



Journey to Milford Sound and enjoy the stunning sights along the way. Drive along the edge of Lake Wakatipu to the village of Te Anau, 'The Key' to the Fiordland National Park. Travel through the famous Homer Tunnel and then onto Eglington Valley and see alpine forest and beautiful waterfalls. Stop for an opportunity to take photos of the stunning Mirror Lakes.

On arrival in Milford Sound, join Southern Discoveries for your 1 hour 45 minute cruise of a lifetime. Marvel at the sheer rock faces towering hundred of metres over you, experience the cascading waterfalls as the spray hits the front deck. Travel the full length of the fiord and out to the Tasman Sea, stopping at points of interest along the way. Join the skipper in on the bridge for a bird's-eye view of Milford Sound.

Discover the fiord on a modern, spacious catamaran; dolphins love the twin hull boats. An open top deck allows for panoramic viewing or venture onto the front deck for up close wildlife and waterfall encounters. Spacious seating indoors and large windows provide optimum viewing for 'wet' days. The local crew provides a full commentary on the natural history and wildlife of the area.

### INCLUDES:

- 1 hour 45 minute Milford Sound cruise ■ Te Anau
- Eglington Valley ■ Fiordland National Park
- Full commentary ■ Buffet lunch
- Return transfers from Queenstown accommodation

**Departs:** Daily from Queenstown at 7:20am

**Returns:** 7:45pm

PRICE:	1 APR – 30 SEP 11		1 OCT 11 – 31 MAR 12	
	NO LUNCH	WITH LUNCH	NO LUNCH	WITH LUNCH
Adult	\$190	\$217	\$187	\$210
Child 3-12 years	\$95	\$111	\$94	\$106

Prices from Te Anau and coach and scenic flight option also available.

GREAT SIGHTS NEW ZEALAND

GRENZL

# Tours from Queenstown

## Doubtful Sound Wilderness Day Cruise



Doubtful Sound is a massive wilderness area of rugged peaks, rainforest and twisting, hidden fiords – all deep in the heart of the Fiordland National Park. Depart Queenstown by luxury coach along the shores of Lake Wakatipu and through farmland to Manapouri. Then cruise across the crystal waters of Lake Manapouri to West Arm before boarding a coach and crossing the alpine route of Wilmot Pass through some of Fiordland's most dense rainforest. On reaching Deep Cove, board a modern catamaran vessel for a three hour cruise exploring the waterways of this serene and isolated fiord. It is home to bottlenose dolphins and fur seals – both of which are often seen, and in season, the rare Fiordland crested penguin. An on board nature guide with specialist knowledge of the region's history, flora and fauna provides detailed interpretation with a roving microphone. There is also an opportunity to visit the Manapouri Underground Power Station by coach before retracing your journey back to Queenstown.

### INCLUDES:

- Three hour scenic wildlife cruise ■ Fiordland National Park
- Full commentary ■ Deluxe picnic lunch (optional extra)
- Return transfers from Queenstown accommodation

**Departs:** Daily from Real Journeys Visitor Centre, Steamer Wharf, Queenstown at 6:55am

**Returns:** 7:30pm

PRICE:	WITH LUNCH			
	1 APR – 30 SEP 11	1 OCT 11 – 31 MAR 12	1 APR – 30 SEP 11	1 OCT 11 – 31 MAR 12
Adult	\$276	\$291	\$295	\$310
Child 5-14 years	\$138	\$146	\$158	\$165

REAL JOURNEYS

REAQZN

## Doubtful Sound Overnight Cruise



Indulge in an overnight cruise in the long southern twilight providing a very special dinner, bed and breakfast experience in magnificent surroundings. Begin with a short cruise across Lake Manapouri and a coach trip over Wilmot Pass. Purpose built for these waters, the Fiordland Navigator offers private cabins, spacious viewing decks, a comfortable dining salon and the opportunity to launch kayaks or explore in tender crafts. Enjoy a leisurely exploration of Doubtful Sound offering stunning views of waterfalls, abundant wildlife, rainforest and mountains. Commentary is provided by an experienced on board nature guide. The vessel anchors overnight in one of Doubtful Sound's hidden arms. Enjoy a three course evening meal and a cooked breakfast before cruising to Deep Cove and retracing your journey back to Queenstown.

### INCLUDES:

- Scenic wilderness cruise ■ On board accommodation
- Three course dinner ■ Breakfast ■ Bed linen and bath towels
- Return transfers from Queenstown accommodation

**Departs:** Real Journeys Visitor Centre, Steamer Wharf, Queenstown  
Daily at 9am (1 – 30 Apr, 1 Oct 11 – 31 Mar 12),  
Mon, Wed, Fri at 9am (1 – 16 May, 20 – 30 Sep 11)

**Returns:** 3:30pm

PRICE PER PERSON:	1 APR – 16 MAY, 20 – 30 SEP 11	1 – 31 OCT 11	1 NOV 11 – 31 MAR 12
Adult twin share	\$430	\$451	\$645
Adult sole use	\$723	\$759	\$1084
Child 1-14 years	\$215	\$226	\$323

Quad share prices also available.

REAL JOURNEYS

REAQZN

## Famous Routeburn Track



This full day walk in the ancient beech forest of the Mount Aspiring National Park starts with a scenic drive to the northern end of Lake Wakatipu and into the Routeburn Valley. The high snow capped mountains provide a magnificent backdrop for the walk up this beautiful river valley.

The walk begins among towering ancient beech forest, climbing gradually through blankets of forest moss and fern and skirting the thundering Routeburn through the gorge it has carved over the millennia. The woodland eventually parts to reveal the rich grassland of Routeburn Flats, overlooked on all sides by cloud-scraping mountains, some so high they have permafrost and small glaciers. The 'flats' is a pristine site for a well earned lunch, as is the next stop, Routeburn Falls, a short stride through more alpine forest.

The Routeburn Track is a well formed and easy walking track. Total walking distance is 16 kilometres and takes between three to five hours.

### INCLUDES:

- Knowledgeable local guides ■ Picnic lunch ■ Tea and coffee
- Day pack and wet weather gear available for hire (free)
- Return transfers from Queenstown accommodation

**Departs:** Daily from Queenstown at 8am

**Returns:** 5pm

PRICE:	1 APR – 30 SEP 11	1 OCT 11 – 31 MAR 12
Adult	\$185	\$189
Child 0-14 years	\$102	\$106

Moderate level of fitness required. Lakeshore, Forest and Bird half day walk also available.

GUIDED NATURE WALKS NEW ZEALAND

GUIQZN

## 2 Night Stewart Island Experience



Stewart Island is a haven for nature lovers, walkers and for those wanting a peaceful retreat from the modern world. Most of the island is protected within Rakiura National Park, making it a sanctuary for native birds and plants.

Enjoy a two night excursion to this remote part of New Zealand. Enjoy a Village and Bays orientation tour of the island and a Paterson Inlet Cruise to visit Ulva Island, a renowned open wildlife sanctuary where many rare and endangered native birds live in a predator-free environment.

The package also includes return transport from Queenstown to Bluff, onward return ferry transfer to Stewart Island and two nights at Stewart Island Lodge, a bed and breakfast retreat nestled in native bush.

### INCLUDES:

- 2 nights accommodation
- Village and Bays tour
- Paterson Inlet Cruise
- Return transfers from Queenstown accommodation
- Return ferry transfers from Bluff to Stewart Island

**Departs:** Daily from The Station Building, corner Camp and Shotover Streets, Queenstown at 7am (1 – 30 Apr, 27 Oct 11 – 31 Mar 12)

**Returns:** 2pm

PRICE PER PERSON:	1 – 30 APR 11	27 – 31 OCT 11	1 NOV 11 – 31 MAR 12
Adult twin share	\$539	\$565	\$647
Child 5-14 years	\$368	\$384	\$467

REAL JOURNEYS

REAQZN