



Mt Hay, Blue Mountains

Our Favourites

Follow one of the many walking tracks into the Blue Mountains National Park

See the spectacular Three Sisters at Echo Point in Katoomba

Experience Katoomba's Scenic Skywalk, a glass bottom carriage that glides 270m above the valley

Take a guided tour of the limestone Jenolan Caves

Browse the antique stores and galleries in Leura and Katoomba

Amazing views are just the beginning of the Blue Mountains' allure. Less than two hours out of Sydney, a whole world of spectacular landscape, village life, adventure sports and pampering spas awaits. Simple pleasures can be enjoyed between villages that offer country hospitality and wonderful local produce.

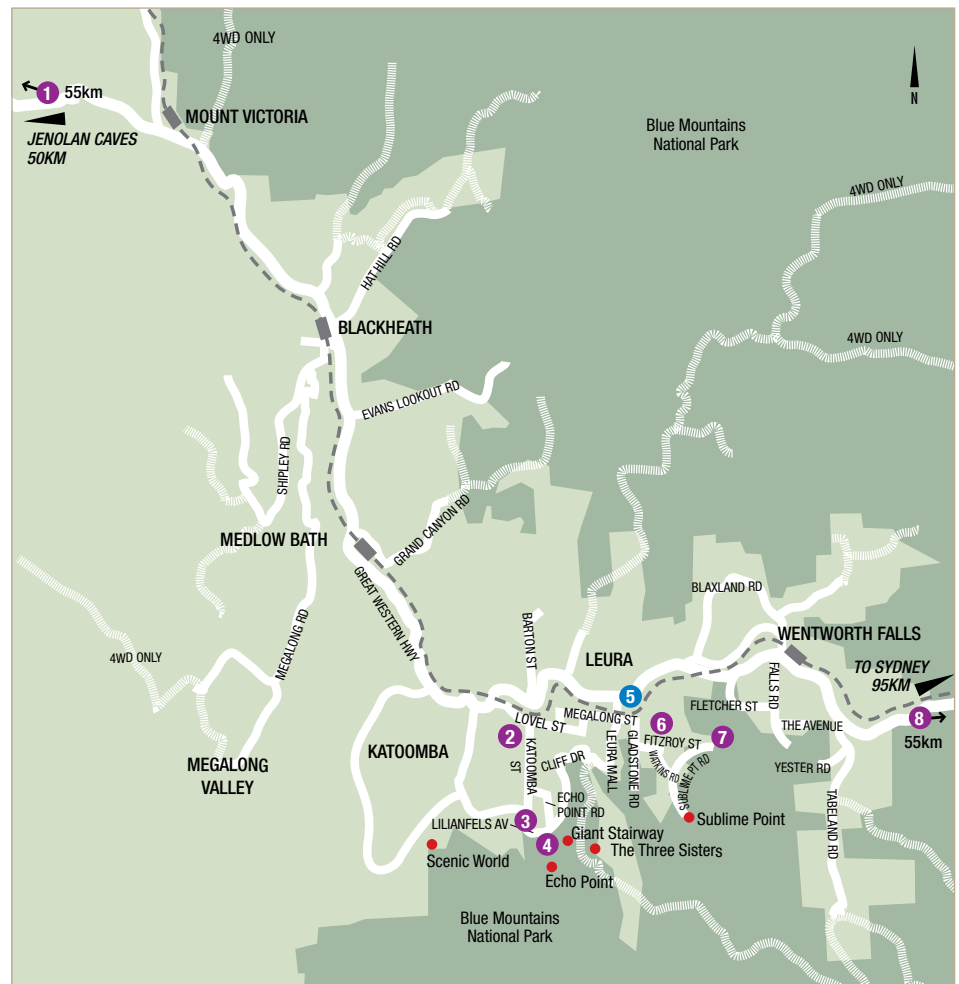
Be captivated by the scenery starting at Echo Point in Katoomba. The Three Sisters stand tall surrounded by the Megalong Valley, discover the Giant Stairway and take in the breathtaking views across to the Ruined Castle. Bushwalking is a favourite pastime here and is the best way to see the whole area. The historic town of Wentworth Falls is fantastically picturesque, go exploring by foot and be rewarded with sensational views over the Jamison Valley, home to the breathtaking waterfall for which the area is named.

Ready for adventure? Get the adrenalin pumping as you abseil down cliff faces or ride the Scenic World railway 415 metres down into the ancient rainforest. Spend some time walking through the forest before climbing aboard the steepest aerial cable car in the southern hemisphere for the 545 metre ascent out of the Jamison Valley rainforest – a truly amazing experience.

Just out of town near Lithgow, be fascinated by the limestone Jenolan Caves, intriguing travellers for more than a century.

FIND YOUR ACCOMMODATION

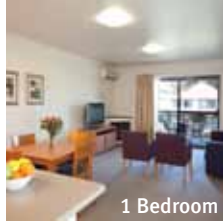
| REF. | APARTMENTS | PAGE |
|------|--|------|
| 5 | Leisure Inn Spires ◆◆◆◆ | 66 |
| REF. | HOTELS | PAGE |
| 2 | The Carrington Hotel ◆◆◆◆ | 66 |
| 3 | Echoes' Boutique Hotel & Restaurant ★★★★★☆ | 68 |
| 1 | Emirates Wolgan Valley Resort & Spa ◆◆◆◆◆ | 68 |
| 7 | Fairmont Resort – a Member of the MGallery Collection ★★★★★☆ | 67 |
| 4 | Lilianfels Blue Mountains Resort & Spa ★★★★★ | 67 |
| 8 | The Sebel Resort & Spa Hawkesbury Valley ★★★★★☆ | 68 |
| 6 | Waldorf Leura Gardens Resort ◆◆◆◆◆ | 66 |



Wentworth Falls, Blue Mountains

Blue Mountains

Leisure Inn Spires ◆◆◆◇



1 Bedroom

Perfectly located close to golf courses, the Three Sisters and the Scenic Railway. Just a short stroll to shops, galleries, cafés and restaurants.

Town Centre 100m
Map page 65 Ref. 5

100 Leura Mall, Leura

PROPERTY FEATURES:

- Landscaped central courtyard
- Parking (undercover – security)

ROOM FEATURES:

- Wi-Fi (extra charge)
- Air-conditioning
- Balcony or patio
- Tea/coffee making facilities
- Kitchen (1 and 2 Bedrooms)
- Spa bath (1 and 2 Bedrooms)
- Laundry (1 and 2 Bedrooms)

Mini service daily

BASED ON
STAY 3, PAY 2

From **\$114** PER ROOM
PER NIGHT*

| 1 APR – 5 JUN, 10 JUN – 2 OCT, 7 OCT – 22 DEC 14, 5 JAN – 31 MAR 15 | ADULTS | 1 NT | 2 NTS | 3 NTS |
|--|--------|------|-------|-------|
| Studio | 1 to 2 | 164 | 328 | 492 |
| 1 Bedroom | 1 to 2 | 207 | 414 | 621 |
| 2 Bedroom | 1 to 4 | 279 | 558 | 837 |
| 6 – 9 JUN, 3 – 6 OCT, 23 DEC 14 – 4 JAN 15 | ADULTS | 1 NT | 2 NTS | 3 NTS |
| Studio | 1 to 2 | N/A | 558 | 837 |
| 1 Bedroom | 1 to 2 | N/A | 642 | 963 |
| 2 Bedroom | 1 to 4 | N/A | 786 | 1179 |

Room and Breakfast prices also available.

Children 0 to 2 years – cot/bed charge payable direct.
3 to 11 years – adult prices apply.

Max capacity Studio – 2, 1 Bedroom – 3, 2 Bedroom – 5.

SPIBLU

BONUS OFFER

FREE Night Offer: Stay 3 nights, pay for 2, valid 1 May – 5 Jun,
10 Jun – 30 Aug, 1 Nov – 22 Dec 14, 5 Jan – 28 Feb 15.

The Carrington Hotel ◆◆◆◆



BASED ON
1 NIGHT STAY

From **\$207** PER ROOM
PER NIGHT*



15-47 Katoomba Street, Katoomba

The historic Carrington Hotel is situated in the heart of Katoomba, amidst cafés, restaurants, art galleries and gift stores, and only a few minutes walk from Katoomba Railway Station.

Recently restored to its former grandeur, this Heritage Listed hotel is a local landmark, offering the elegance, luxury and charm of yesteryear.

The hotel features a Grand Dining Room (open Thursday to Saturday plus extra nights during school holidays), The Old City Bank Brasserie (at street level), Cocktail Bar, Billiards Room, guest lounges with open fires, Day Spa, free guest parking and more.

The Carrington Hotel is the perfect destination for a romantic getaway or a convenient base to enjoy the surrounding World Heritage Listed Blue Mountains National Park.

PROPERTY FEATURES:

- Free Wi-Fi (public areas)
- Day spa
- 24 hour reception
- Restaurants (2)
- Bars (3) ▪ Billiards room
- Nightclub ▪ Guest lounge
- Library ▪ Fireplace
- Parking

ROOM FEATURES:

- Tea/coffee making facilities
- Ironing facilities
- Hair dryer

Room serviced daily

Town Centre 50m
Map page 65 Ref. 2



| 1 APR 14 – 31 MAR 15 | ADULTS | 1 NT | 2 NTS | 3 NTS |
|----------------------|--------|------|-------|-------|
| Colonial | 2 | 207 | 414 | 621 |
| Premier Spa View | 2 | 273 | 546 | 819 |
| Junior Suite | 2 | 340 | 680 | 1020 |

2 night minimum stay applies when stay includes a Saturday night.

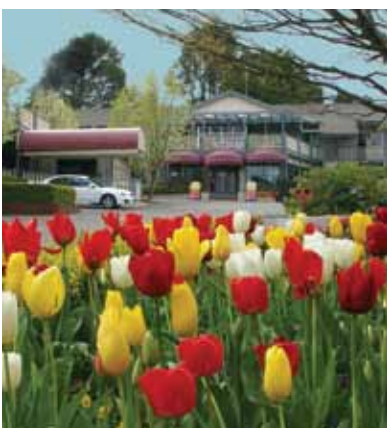
Includes Light breakfast daily.

Children 0 to 5 years – cot/bed charge payable direct.
6 to 12 years – \$40 per child per night.

Max capacity 3.

CARBLU

Waldorf Leura Gardens Resort ◆◆◆◆



Set amidst four and a half acres of landscaped gardens and only minutes from all the attractions of the Blue Mountains.

Town Centre 2km
Map page 65 Ref. 6

20-28 Fitzroy Street, Leura

PROPERTY FEATURES:

- Massage facilities
- Restaurants (2 – selected opening times)
- Bar ▪ Guest lounge ▪ Fireplace
- Pool ▪ Squash court
- DVD library ▪ Parking

ROOM FEATURES:

- Air-conditioning
- Tea/coffee making facilities ▪ Mini bar
- Limited cooking facilities with microwave (Family Resort rooms)
- Cable TV ▪ In-room movies (free)
- CD/DVD player ▪ Hair dryer

Room serviced daily



BASED ON
STAY 3, PAY 2

From **\$129** PER ROOM
PER NIGHT*

| 1 APR – 30 SEP 14, 1 FEB – 31 MAR 15 | ADULTS | 1 NT | 3 NTS | 5 NTS |
|--------------------------------------|--------|------|-------|-------|
| Resort | 1 to 2 | 193 | 386 | 772 |
| Deluxe Resort | 1 to 2 | 220 | 440 | 880 |
| Family Resort | 1 to 2 | 247 | 741 | 1235 |
| 1 OCT 14 – 31 JAN 15 | ADULTS | 1 NT | 3 NTS | 5 NTS |
| Resort | 1 to 2 | 213 | 426 | 852 |
| Deluxe Resort | 1 to 2 | 240 | 480 | 960 |
| Family Resort | 1 to 2 | 267 | 801 | 1335 |

Includes Full buffet breakfast daily.

Children 0 to 2 years – cot/bed charge payable direct.
3 to 15 years – \$40 per child per night.

Max capacity Resort – 2, Deluxe Resort – 3, Family Resort – 4.

LEUBLU

BONUS OFFER

FREE Night Offer: Stay 3 nights in a Resort room or Deluxe Resort room, pay for 2.
(3 and 5 night prices include 1 free night)

Fairmont Resort – a Member of the MGallery Collection ★★★★★☆



1 Sublime Point Road, Leura

Fairmont Resort is a unique property located in the World Heritage Listed Blue Mountains, on the edge of the beautiful Jamison Valley, just 90 minutes west of Sydney.

Featuring 210 deluxe rooms with views over the beautiful Jamison Valley or the adjoining Leura Golf Course, the Fairmont Resort is the perfect place for a romantic escape, a get together with a group of friends or family retreat. The Fairmont Resort is a destination in itself with an extensive array of leisure facilities including two restaurants, a bar lounge, indoor and outdoor pool, tennis and squash courts, table tennis, gymnasium and spa treatment facilities. Enjoy its scenic walking tracks along Australian bushland and golf at Leura Golf Course.

The resort is the ideal base to explore local attractions including the Three Sisters, Scenic World and the charming historic villages of Leura, Katoomba, Blackheath and Wentworth Falls.

PROPERTY FEATURES:

- Wi-Fi (public areas – extra charge)
- Massage and spa treatment facilities
- 24 hour reception ■ Restaurants (2)
- Café ■ Bar ■ Guest lounge ■ Spa
- Pools (2 – indoor, outdoor including children's wading)
- Sauna ■ Tennis courts (2) ■ Gymnasium
- Non smoking ■ Guest laundry ■ Lift

ROOM FEATURES:

- Wi-Fi (extra charge) ■ Air-conditioning ■ Mini bar
- Tea/coffee making facilities ■ Cable TV
- In-room movies (pay to view) ■ Bath
- Ironing facilities ■ Hair dryer

Room serviced daily

Town Centre 4km

Map page 65 Ref. 7



BASED ON
1 NIGHT STAY

From **\$219** PER ROOM
PER NIGHT*



| | ADULTS | 1 NT | 2 NTS | 3 NTS |
|--|--------|------|-------|-------|
| 1 – 16 APR, 27 APR – 31 MAY, 1 SEP 14 – 31 MAR 15 | | | | |
| SUNDAY TO THURSDAY | | | | |
| Fairmont Superior | 1 to 2 | 219 | 438 | 657 |
| | 1 to 2 | 269 | 538 | 807 |
| FRIDAY TO SATURDAY | | | | |
| Fairmont Superior | 1 to 2 | 240 | 480 | N/A |
| | 1 to 2 | 290 | 580 | N/A |
| 1 JUN – 31 AUG 14 | ADULTS | 1 NT | 2 NTS | 3 NTS |
| SUNDAY TO THURSDAY | | | | |
| Fairmont Superior | 1 to 2 | 240 | 480 | 720 |
| | 1 to 2 | 290 | 580 | 870 |
| FRIDAY TO SATURDAY | | | | |
| Fairmont Superior | 1 to 2 | 281 | 562 | N/A |
| | 1 to 2 | 331 | 662 | N/A |

Other prices apply 17 – 26 Apr 14.

Children 0 to 14 years – free when sharing with an adult and using existing bedding.

Max capacity 3.

FAIBLU

BONUS OFFER

FREE full buffet breakfast for 2 adults and 2 children 0 to 14 years daily for stays of 2 nights or more.

Lilianfels Blue Mountains Resort & Spa ★★★★★



5–19 Lilianfels Avenue, Echo Point, Katoomba

Set on a spectacular cliff top overlooking the Jamison Valley in the World Heritage Listed Blue Mountains and only a short 90 minute drive from Sydney, Lilianfels Resort & Spa offers an incredible experience.

The resort is surrounded by two acres of manicured gardens and features the renowned fine dining restaurant Darley's, Lilianfels Day Spa and a welcoming fireplace in the featured lounge area. With 85 well appointed, stylish and individually decorated rooms, Lilianfels provides a unique opportunity to relax and indulge in natural surrounds.

PROPERTY FEATURES:

- Wi-Fi (public areas – extra charge)
- Lilianfels Day Spa
- 24 hour reception
- Restaurants (2) ■ Bar
- Room service (24 hour)
- Fireplaces (2)
- Pools (2) ■ Spa
- Sauna ■ Games room
- Laundry/dry cleaning service
- Parking (undercover and valet)
- Non smoking

ROOM FEATURES:

- Air-conditioning
- Tea/coffee making facilities
- Mini bar ■ Cable TV
- CD/DVD player
- iPod docking station
- Bathrobes
- Ironing facilities ■ Hair dryer

Room serviced daily

Town Centre 1km

Map page 65 Ref. 4



BASED ON
1 NIGHT STAY

From **\$311** PER ROOM
PER NIGHT*



| | ADULTS | 1 NT | 2 NTS | 3 NTS |
|---|--------|------|-------|-------|
| 1 – 11 APR, 28 APR – 5 JUN, 9 JUN – 2 OCT, 6 – 31 OCT 14 | | | | |
| SUNDAY TO THURSDAY | | | | |
| Deluxe Resort View | 1 to 2 | 339 | 678 | 1017 |
| Deluxe Valley View | 1 to 2 | 477 | 954 | 1431 |
| FRIDAY TO SATURDAY | | | | |
| Deluxe Resort View | 1 to 2 | 436 | 872 | N/A |
| Deluxe Valley View | 1 to 2 | 575 | 1150 | N/A |
| 1 NOV – 23 DEC 14, 5 – 22 JAN, 27 JAN – 31 MAR 15 | ADULTS | 1 NT | 2 NTS | 3 NTS |
| SUNDAY TO THURSDAY | | | | |
| Deluxe Resort View | 1 to 2 | 311 | 622 | 933 |
| Deluxe Valley View | 1 to 2 | 449 | 898 | 1347 |
| FRIDAY TO SATURDAY | | | | |
| Deluxe Resort View | 1 to 2 | 408 | 816 | N/A |
| Deluxe Valley View | 1 to 2 | 547 | 1094 | N/A |

Other prices apply 12 – 27 Apr, 6 – 8 Jun, 3 – 5 Oct, 24 Dec 14 – 4 Jan, 23 – 26 Jan 15. Other room types and Room and Breakfast prices also available.

Children 0 to 12 years – free when sharing with an adult and using existing bedding. Cot free of charge.

Max capacity Deluxe Resort View – 4, Deluxe Valley View – 2.

LILBLU

BONUS OFFER

FREE full buffet breakfast for 2 adults daily for stays of 3 nights or more.

FREE admission to Waradah Aboriginal Culture Centre per person for stays of 2 nights or more.

Offers not combinable.

Blue Mountains, Hawkesbury Valley and Wolgan Valley

Echoes' Boutique Hotel & Restaurant ★★★★★



Perched at the edge of the Jamison Valley at Echo Point in the Blue Mountains, offering stunning views from every room.

Town Centre 1km
Map page 65 Ref. 3

3 Lillianfels Avenue, Katoomba

PROPERTY FEATURES:

- Echoes Spa (day spa) ▪ Restaurant ▪ Bar
- Room service (limited) ▪ Internet facilities
- Guest lounge ▪ Fireplace
- Use of facilities at Lillianfels Blue Mountains Resort & Spa ▪ Parking

ROOM FEATURES:

- Air-conditioning ▪ Balcony
- Tea/coffee making facilities ▪ Mini bar
- Cable TV ▪ CD/DVD player
- iPod docking station
- Bathrobes ▪ Ironing facilities ▪ Hair dryer

Room serviced daily



BASED ON
1 NIGHT STAY

From **\$380** PER ROOM PER NIGHT*

| | ADULTS | 1 NT | 2 NTS | 3 NTS |
|---|--------|------|-------|-------|
| 1 – 11 APR, 28 APR – 5 JUN, 9 JUN – 2 OCT, 6 – 31 OCT 14 | | | | |
| SUNDAY TO THURSDAY Deluxe View | 1 to 2 | 408 | 816 | 1224 |
| FRIDAY TO SATURDAY Deluxe View | 1 to 2 | 504 | 1008 | N/A |
| 1 NOV – 23 DEC 14, 5 – 22 JAN, 27 JAN – 17 FEB, 23 FEB – 31 MAR 15 | | | | |
| SUNDAY TO THURSDAY Deluxe View | 1 to 2 | 380 | 760 | 1140 |
| FRIDAY TO SATURDAY Deluxe View | 1 to 2 | 477 | 954 | N/A |

Children 0 to 12 years – free when sharing with an adult and using existing bedding. Cot free of charge.

Max capacity 2. **ECHBLU**

BONUS OFFER

FREE entry to cultural centre for stays of 2 nights or FREE breakfast for 2 adults daily for stays of 3 nights or more.

The Sebel Resort & Spa Hawkesbury Valley ★★★★★



Beautifully appointed rooms located in the foothills of the Blue Mountains. An ideal choice for a relaxing weekend.

Town Centre 1km
Wentworth Falls 55km
Map page 65 Ref. 8

61 Hawkesbury Valley Way, Windsor

PROPERTY FEATURES:

- Villa Thalgo Day Spa
- 24 hour reception
- Restaurants (2) ▪ Bar
- Room service (24 hour)
- Pool (heated indoor)
- Spa ▪ Sauna
- Tennis courts (2 – floodlit)
- Gymnasium ▪ Parking

ROOM FEATURES:

- Air-conditioning ▪ Mini bar
- Tea/coffee making facilities
- Cable TV ▪ Ironing facilities ▪ Hair dryer

Room serviced daily



BASED ON
1 NIGHT STAY

From **\$176** PER ROOM PER NIGHT*

| | ADULTS | 1 NT | 2 NTS | 3 NTS |
|--------------------------------------|--------|------|-------|-------|
| 1 APR – 28 DEC 14, 3 JAN – 31 MAR 15 | | | | |
| SUNDAY TO THURSDAY Barracks | 1 to 2 | 176 | 352 | 528 |
| Courtyard | 1 to 2 | 217 | 434 | 651 |
| Courtyard Spa | 1 to 2 | 217 | 434 | 651 |
| Deluxe Spa | 1 to 2 | 256 | 512 | 768 |
| FRIDAY TO SATURDAY Barracks | 1 to 2 | 232 | 464 | N/A |
| Courtyard | 1 to 2 | 272 | 544 | N/A |
| Courtyard Spa | 1 to 2 | 272 | 544 | N/A |
| Deluxe Spa | 1 to 2 | 313 | 626 | N/A |

Other prices apply 29 Dec 14 – 2 Jan 15.

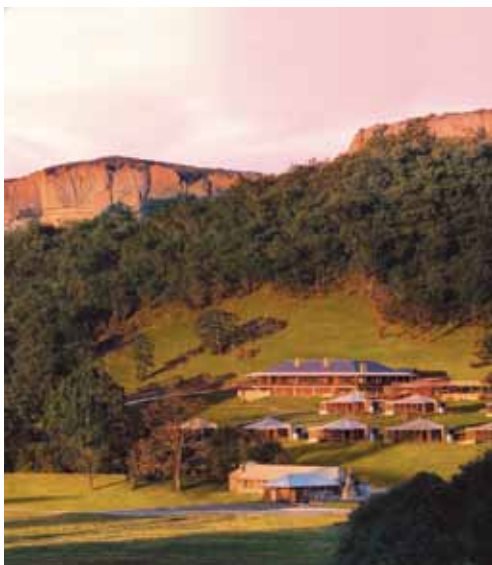
Children 0 to 11 years – free when sharing with an adult and using existing bedding.

Max capacity Barracks – 2, Courtyard/Courtyard Spa/ Deluxe Spa – 3. **SEBHKB**

BONUS OFFER

FREE full buffet breakfast for 2 adults daily for stays of 3 nights or more.

Emirates Wolgan Valley Resort & Spa ◆◆◆◆



2600 Wolgan Road, Wolgan Valley

Experience the breathtaking beauty of the Australian wilderness at Emirates Wolgan Valley Resort & Spa, located in the Greater Blue Mountains less than three hours by road from Sydney. The resort lies within its own 4,000 acre wildlife and conservation reserve and features distinctive dining, the superb Timeless Spa and 40 luxury stand alone suites, each with its own private swimming pool.

This is the quintessential Australian bush experience – a unique and enriching combination of wildlife, dramatic natural beauty, conservation, heritage and a spectacular Australian bush setting, which can be explored through a range of nature based activities including four wheel drives, heritage tours, wildlife spotting and horse riding.

PROPERTY FEATURES:

- Timeless Spa (day spa)
- 24 hour reception ▪ Restaurant ▪ Café
- Bar ▪ Room service (24 hour)
- Pool ▪ Gymnasium ▪ Sauna ▪ Steam room
- Tennis court ▪ Mountain bikes ▪ DVD library
- Resort shop ▪ Business facilities
- Lift ▪ Laundry/dry cleaning service

ROOM FEATURES:

- Private pool ▪ Air-conditioning ▪ Gas fireplace
- Mini bar ▪ Tea/coffee making facilities
- In-room movies (free) ▪ Cable TV
- iPod docking station ▪ CD/DVD player
- Walk-in dressing room ▪ Bathrobes
- 2 bathrooms (Wollemi Suites)
- 3 bathrooms (Wolgan Suites)
- All rooms non smoking

Room serviced daily

Town Centre 35km
Map page 65 Ref. 1



BASED ON
3 NIGHT STAY

From **\$1640** PER ROOM PER NIGHT*



| | ADULTS | 1 NT | 3 NTS | 5 NTS |
|--------------------------------------|--------|-------|-------|-------|
| 1 APR – 21 DEC 14, 5 JAN – 31 MAR 15 | | | | |
| Heritage Suite | 1 to 2 | 2053 | 4920 | 8200 |
| Wollemi Suite | 1 to 4 | 3700 | 8880 | 14800 |
| Wolgan Suite | 1 to 6 | 5700 | 13680 | 22800 |
| 22 DEC 14 – 4 JAN 15 | | | | |
| Heritage Suite | 1 to 2 | 4106 | 6159 | 10265 |
| Wollemi Suite | 1 to 4 | 7400 | 11100 | 18500 |
| Wolgan Suite | 1 to 6 | 11400 | 17100 | 28500 |

3 night minimum stay applies 22 – 27 Dec 14.

Includes All meals and non-alcoholic beverages, regional beers and wine with meals daily. Two on-site activities daily.

Children 0 to 2 years – cot free of charge. 3 to 16 years – adult prices apply.

Max capacity Heritage Suite – 2, Wollemi Suite – 5, Wolgan Suite – 7.

WLGNSW