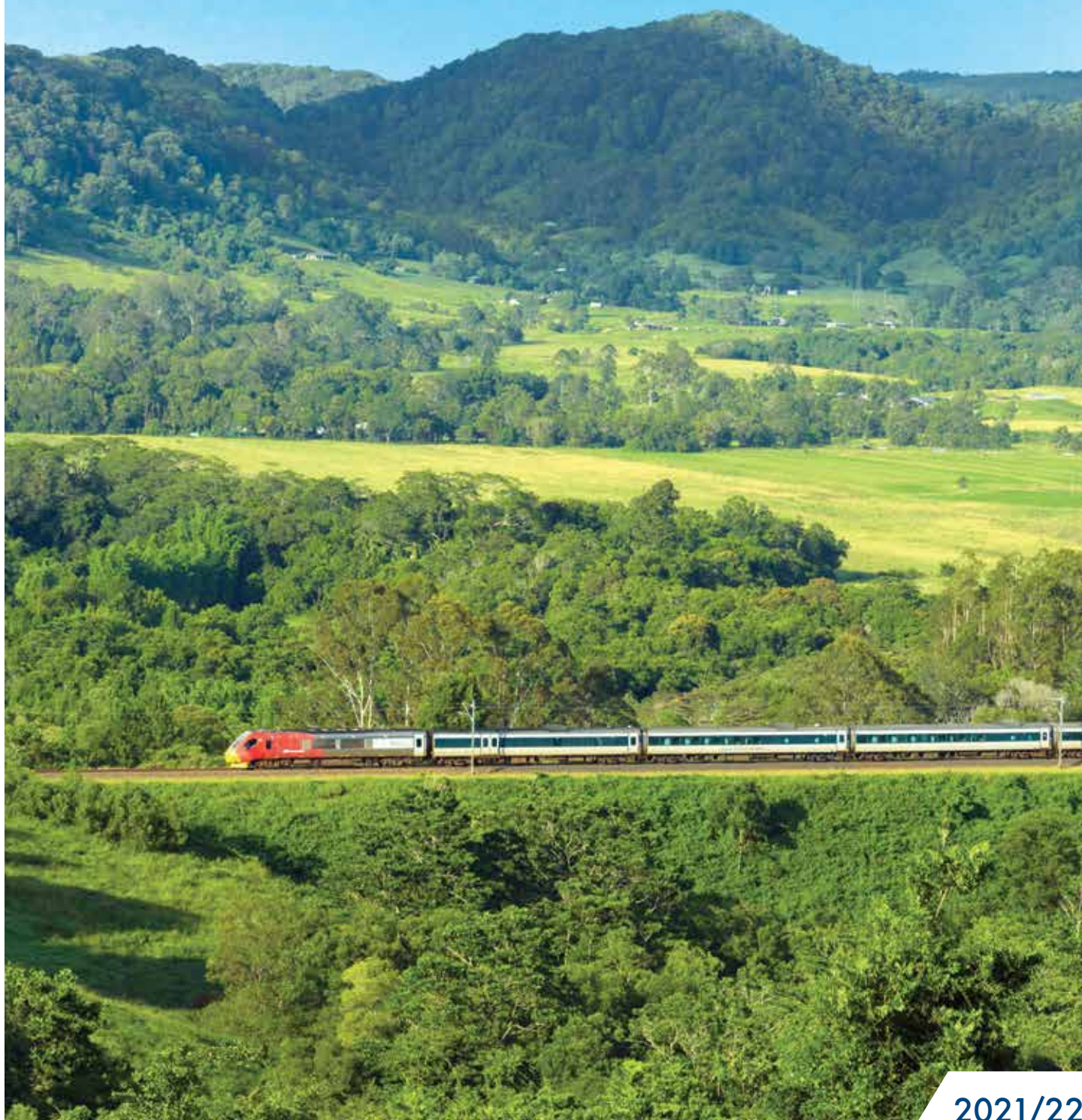


QUEENSLAND RAIL HOLIDAYS



QUEENSLAND RAIL HOLIDAYS

Sunlover Holidays loves Queensland and you will too. Discover the beautiful coastline and marvel at spectacular outback landscapes as you traverse Queensland on an unforgettable rail holiday. We have combined a great range of accommodation and tour options with these iconic rail journeys to create your perfect holiday.

Whether you're planning a short break, a romantic getaway or the ultimate family adventure, **Sunlover Holidays** can tailor-make your dream holiday. Use this brochure for inspiration, then let our travel experts assist you to experience Queensland your way – happy travelling!





Enjoy hearty Outback inspired cuisine and unparalleled service on the Spirit of the Outback



Lawn Hill Gorge, Queensland



Michaelmas Cay, Tropical North Queensland

CONTENTS

Planning Your Rail Holiday	5
COASTAL RAIL	6
Tilt Train	7
Tilt Train Holiday Packages	8
Spirit of Queensland	10
Spirit of Queensland Holiday Packages	12
Kuranda Scenic Railway	17
GULF SAVANNAH RAIL	18
Gulflander	19
Gulf Savannah Holiday Packages	20
OUTBACK RAIL	23
Spirit of the Outback	24
Ultimate Outback Queensland Adventure – Fully Escorted	26
Spirit of the Outback Holiday Packages	28
Westlander	33
Westlander Holiday Packages	33
Inlander	34
Inlander Holiday Packages	34
Booking Conditions	35

Take the track less travelled
onboard the Inlander





PLANNING YOUR RAIL HOLIDAY

Queensland has so much to offer – from the Islands of the Whitsundays and the ancient rainforests of Tropical North Queensland, to the rugged landscapes of the outback. And one of the best ways to see these iconic destinations is by train, where all you have to do is sit back, relax and enjoy the passing scenery. Queensland Rail Travel offers one of the most comprehensive rail networks in Australia, with five long distance services and two tourist trains, taking you to every corner of Queensland.

This brochure will provide you with all the information you need to plan your perfect rail holiday, including the specific features on board each train, timetables, as well as a range of holiday packages designed to showcase the very best of Queensland.

FULLY ESCORTED OUTBACK RAIL TOUR

Let our experienced tour guide take care of you on our fully escorted Ultimate Outback Queensland Adventure. You can sit back, relax and watch the scenery go by as you journey on the legendary Spirit of the Outback. See pages 26 and 27 for full details.

LUGGAGE CHECK-IN

At attended stations, luggage check-in facilities open one hour prior to departure for 30 minutes. At unattended stations, on board staff will assist with checking luggage upon the train's arrival.

ACCESSIBILITY INFORMATION

The level of accessibility varies at each station across the long-distance network, and onboard the trains. To assist you with planning your journey, further information is available through your travel agent.

CONCESSION FARES

On presentation of a current Australian state or territory Government Seniors Card, you will receive up to 50% off the full adult rail fare on Queensland Rail Travel's long distance services. Queensland Pension Concession Card holders are eligible to receive four Queensland Pension rail travel entitlements each calendar year. An administration charge applies for the use of rail travel entitlements. Meals and upgrades to Sleeper or RailBed accommodation are an additional cost to concession rail fares.

Queensland Pension entitlements include one of the following:

- RailBed: Two one-way trips using two entitlements for each journey.
- First Class Sleeper: Two one-way trips using two entitlements for each journey.
- Business Seat: Two one-way trips using two entitlements for each journey.
- Economy and Premium Economy Seats: four one-way trips using one entitlement for each journey.



Kuranda Railway Station, Tropical North Queensland



Be inspired by the unspoilt tropical paradise of Ellis Beach, Tropical North Queensland



Heart Reef, Whitsundays, Queensland



Central Station, Fraser Island, Queensland

COASTAL RAIL

From stunning beaches and the Great Barrier Reef to tropical rainforests and laidback cities, discover it all and more on a coastal rail journey. Travel on the Spirit of Queensland or the Tilt Train to uncover the hidden treasures and must-sees of Queensland's coastline.

FRASER COAST

Take the Tilt Train and connect to the coastal town of Hervey Bay, a playground for Humpback whales. From August to October, enjoy a whale watch cruise from Hervey Bay and glimpse these majestic mammals up close. Explore the world's largest sand island, Fraser Island. Wander through towering, ancient rainforests, swim in pristine freshwater lakes, drive along endless Seventy Five Mile Beach and discover the Maheno Shipwreck.

WHITSUNDAY COAST

Located midway along the Queensland Coast, the Whitsunday Coast is one of the world's ultimate travel destinations. Easily accessible by a short coach transfer from Proserpine Station, it combines white sand beaches, blue waters, colourful reefs and a range of activities for everyone. Take a cruise to Whitehaven Beach, snorkel on the Great Barrier Reef, relax on an island resort, or soak up the village atmosphere of Airlie Beach.

SOUTHERN GREAT BARRIER REEF

Bundaberg is the starting point of the Southern Great Barrier Reef and a 15 minute drive from the seaside town of Bargara. Discover the untouched paradise of the Town of 1770 and Agnes Water, famous for its surf beaches. Journey north and you'll find Rockhampton, known for its historic Queensland architecture. Head to the nearby coastal town of Yeppoon and explore the many sandy beaches that make up the Capricorn Coast.

TROPICAL NORTH QUEENSLAND

Whether you're beginning or ending your rail experience in Cairns, this vibrant city truly is the ideal base to explore Tropical North Queensland. Snorkel or dive the Great Barrier Reef or join a 4WD safari and discover the rainforest splendour of the Daintree and Cape Tribulation. From Townsville, explore all of North Queensland's attractions including ancient rainforests, waterfalls and Magnetic Island.



Burnett Bridge, Bundaberg, Queensland

TILT TRAIN RAIL JOURNEY

Designed to ensure a comfortable and smooth journey, the Tilt Train is a high speed electric train offering regular services from Brisbane to Bundaberg and Rockhampton. Take the Tilt Train to connect to Hervey Bay for a spot of whale watching or explore World Heritage Listed Fraser Island. Or travel further north to the beaches of 1770 and the Capricorn Coast.

Enjoy the passing scenery in the comfort of a Business or Economy seat, with complimentary Wi-Fi available. Stretch your legs and visit the Galley, where you can purchase a selection of meals and refreshments. Alternatively, an in-seat trolley service is available throughout the journey.



Business Seat



Economy Seat

ECONOMY SEAT

The Economy Seat Carriage features reclinable seats, with two by two seating configuration.

- Comfortable recline seat
- Fold down table, reading light and foot rest
- Overhead lockers and luggage racks
- USB charging port available at each seat
- Drinking fountains and toilet facilities located at the end of each carriage

BUSINESS SEAT

The Business Seat Carriage features roomy reclinable seats, allowing you to stretch out.

- Comfortable larger recline seat
- Complimentary juice and newspaper when onboard
- Fold down table, reading light and foot rest
- Overhead lockers and luggage racks
- 240-volt power point
- Drinking fountain and toilet facilities located at the end of the carriage



Galley

RAIL FARES

BRISBANE TO BUNDABERG

Adult Economy Seat	\$54*
Senior Economy Seat	\$45*
Adult Business Seat	\$69*
Senior Business Seat	\$58*

BRISBANE TO ROCKHAMPTON

Adult Economy Seat	\$102*
Senior Economy Seat	\$68*
Adult Business Seat	\$158*
Senior Business Seat	\$93*

TIMETABLE

BRISBANE TO BUNDABERG

Distance:	351 kms
Duration:	4 hrs 30 mins

Brisbane to Bundaberg

Departs Mon, Tue, Wed, Thu, Fri, Sun

Brisbane	4:55pm
Arrive Bundaberg	9:25pm

Bundaberg to Brisbane

Departs Mon, Tue, Thu, Fri, Sat

Bundaberg	5:15am
Arrive Brisbane	9:55am

BRISBANE TO ROCKHAMPTON

Distance:	639 kms
Duration:	7 hrs 30 mins

Brisbane to Rockhampton

Departs Mon, Tue, Thu, Fri, Sat, Sun

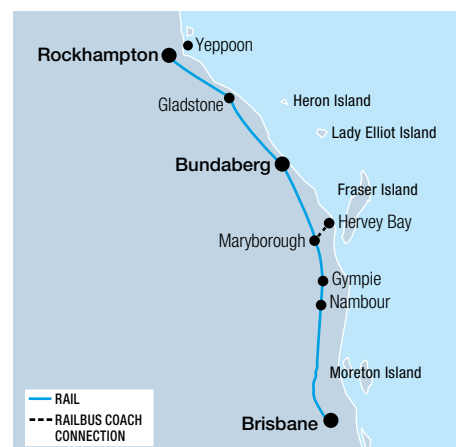
Brisbane	11:00am	4:55pm [^]
Arrive Rockhampton	6:45pm	12:30am [^]

Rockhampton to Brisbane

Departs Daily

Rockhampton	7:10am
Arrive Brisbane	2:50pm

Timetable is correct at time of printing and is subject to change without notice. [^]Tues, Sun departures only.



TILT TRAIN HOLIDAY PACKAGES



Lake McKenzie, Fraser Island, Queensland

HERVEY BAY & FRASER ISLAND GETAWAY 4 DAYS

Day 1: Tilt Train – Brisbane to Hervey Bay

Journey on the Tilt Train this morning and travel north to Maryborough West, your connection to the Fraser Coast. Transfer to Hervey Bay. Stay the next three nights at Ramada Resort by Wyndham Hervey Bay.

Day 2: Fraser Island (BL)

After breakfast, join a full day 4WD guided tour of Fraser Island. Learn about the natural and cultural history of Fraser Island. Swim in the crystal clear, blue waters of Lake McKenzie, the island's most beautiful perched lake. Enjoy lunch and a drive along spectacular Seventy Five Mile Beach. Stop to swim in the cool fresh waters of Eli Creek and marvel at the coloured sands of the Pinnacles.

Day 3: Hervey Bay (B)

Spend the day at leisure exploring the beautiful coastal town of Hervey Bay. Perhaps take a bicycle ride along the picturesque foreshore, visit the Fraser Coast Discovery Sphere, or from July to October enjoy a whale watching cruise (Whale Watch Adventure option).

Day 4: Hervey Bay to Brisbane (B)

After breakfast, meet your RailBus Coach Connection transfer to Maryborough West Railway Station for the Tilt Train journey back to Brisbane. Relax in your reclining seat and take in the passing scenery of South East Queensland.

(B = breakfast, L = lunch)

4 DAY WHALE WATCH ADVENTURE

Add an afternoon Whale Watch cruise to your Hervey Bay and Fraser Island Experience and see the Humpback whales in the calm waters of Hervey Bay.

Adult **From \$1032***[^] Senior **From \$953***[^]
per person twin share per person twin share

[^]Prices valid 1 Aug – 15 Oct 21. Sole use prices also available.

4 DAYS | BRISBANE TO BRISBANE

TRAVEL TYPE: Tilt Train

DEPARTS: Mon, Tue, Thu, Fri, Sat, Sun
(1 Apr 21 – 31 Mar 22)⁺

Adult **From \$769***[^]
per person twin share

Senior **From \$701***[^]
per person twin share

HIGHLIGHTS

- Walk along the Urangan Pier
- See the Maheno Shipwreck on Fraser Island
- Take in the spectacular views from Indian Head

INCLUDES

- Return travel on the Tilt Train from Brisbane to Maryborough West – Economy Seat
- 3 nights 4½ star accommodation in Hervey Bay
- Meals as specified
- Full day 4WD Fraser Explorer Day Tour
- Return RailBus Coach Connection from Maryborough West Railway Station to Hervey Bay

[^]Prices valid 6 Apr – 4 Jul, 12 – 29 Jul, 18 Oct – 15 Dec 21, 10 Jan – 31 Mar 22. ⁺Blockout dates apply. Sole use prices also available.



Bundaberg Rum Distillery, Queensland

BUNDABERG BREAKAWAY 4 DAYS

Day 1: Tilt Train – Brisbane to Bundaberg

Join the Tilt Train in Brisbane and sit back and relax as you travel north to Bundaberg. Arrive in Bundaberg in the afternoon and transfer to your accommodation in the seaside town of Bargarra.

Make a quick stop at the Hummock Look Out where you can take in the spectacular views of the ocean to the east and the sugar cane fields to the west. Stay the next three nights at Kellys Beach Resort, Bargarra.

Day 2: Bundaberg (BLD)

The morning is yours to enjoy at leisure. Take a walk along the picturesque foreshore or stroll through Kelly's Creek Reserve. Enjoy a visit to the famous Bundaberg Rum Distillery in the afternoon. Tour the interactive Bundaberg Rum Museum and discover the rich history of Bundaberg Rum. After exploring the Bundaberg Rum Museum, join an expert Distillery Guide on a guided journey deep into the heart of the fully operational distillery. Enjoy dinner at the resort's restaurant.

Day 3: Bargarra (B)

Spend today at leisure exploring the beautiful seaside village of Bargarra. Take a walk along the picturesque foreshore or visit the Amandine Lavender farm (own expense). From January to March see the baby turtle hatchlings emerge from their nest at Mon Repos Conservation Park (own expense).

Day 4: Tilt Train – Bundaberg to Brisbane (B)

Transfer to Bundaberg Railway Station for the Tilt Train journey back to Brisbane.

(B = breakfast, L = lunch, D = dinner)

4 DAYS | BRISBANE TO BRISBANE

TRAVEL TYPE: Tilt Train

DEPARTS: Fridays (9 Apr – 23 Dec 21, 28 Jan – 31 Mar 22)

Adult **From \$635***[^]
per person twin share

Senior **From \$570***[^]
per person twin share

HIGHLIGHTS

- Explore the town of Bargarra
- Tour the Bundaberg Rum Distillery

INCLUDES

- Return travel on the Tilt Train from Brisbane to Bundaberg – Economy Seat
- 3 nights 3½ star accommodation in Bargarra
- Meals as specified
- Entry to Bundaberg Rum Museum and Distillery Experience Tour
- Return coach transfers from Bundaberg Railway Station to Bargarra

[^]Prices valid 9 Apr – 23 Dec 21, 28 Jan – 31 Mar 22. Sole use prices also available.





Town of 1770, Queensland

TOWN OF 1770 HIGHLIGHTS 4 DAYS

Day 1: Tilt Train – Brisbane to Miriam Vale

Journey on the Tilt Train this morning and travel from Brisbane to Miriam Vale. Relax in your reclining seat and enjoy the onboard entertainment, or simply take in the panoramic views of Queensland's changing landscape.

On arrival in Miriam Vale, be transferred to your accommodation at Town of 1770. Stay the next three nights at 1770 Lagoons Central Resort & Spa.

Day 2: Town of 1770 (BD)

Spend the morning exploring the Town of 1770 on a guided tour. Wander through the Paperbark Forest Walk, visit the Agnes Water Museum and learn about the region's unique history.

Take a bushwalk up to the scenic Agnes Water lookout and enjoy stunning views of the surrounding beaches, spot dolphins, turtles, whales, birds and watch the

surfers ride the waves. Visit the historic Captain Cook Monument before exploring the famous 1770 headland.

Watch the spectacular sun set over the ocean before heading to the resort's Plantation Bar and Restaurant for dinner. Sit back and enjoy an innovative Australian dining experience overlooking the lagoon pool.

Day 3: Town of 1770 (BL)

Explore the National Parks and waterways bordering the picturesque Town of 1770 on an amphibious craft, the LARC! Climb the Bustard Head Lighthouse tower and take a guided tour of the lightkeeper's cottage museum and restored engine room. End the day sandboarding down 35 metre sand dunes at Middle Island.

Day 4: Miriam Vale to Brisbane (B)

Transfer to Miriam Vale Railway Station for the Tilt Train journey back to Brisbane.

(B = breakfast, L = lunch, D = dinner)

4 DAYS | BRISBANE TO BRISBANE

TRAVEL TYPE: Tilt Train

DEPARTS: Mon, Thu, Sat (1 Apr – 15 Dec 21, 10 Jan – 31 Mar 22)

Adult	From \$965* [^] per person twin share
Senior	From \$902* [^] per person twin share

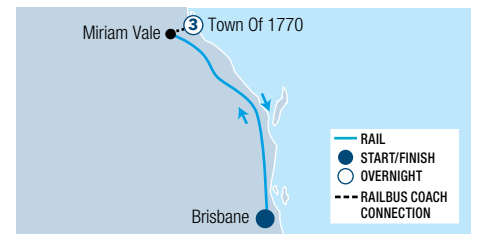
HIGHLIGHTS

- Visit the coastal Town of 1770
- Agnes Water Museum
- Tour of Bustard Head Lighthouse

INCLUDES

- Return travel on the Tilt Train from Brisbane to Miriam Vale – Economy Seat
- 3 nights 4½ star accommodation in Town of 1770
- Meals as specified • Half day Town of 1770 Tour
- 2 day Town of 1770 bus pass
- Full day LARC! Paradise Tour
- Return coach transfers from Miriam Vale Railway Station to Town of 1770

[^]Prices valid 1 Apr – 15 Dec 21, 10 Jan – 31 Mar 22 and include Bustard Head Lightstation Association management fee of \$9 per person and Queensland Parks & Wildlife Service entry fee of \$2 per person to be paid directly to the tour operator on the day of the tour by you. Sole use prices also available.



Yeppoon, Queensland

CAPRICORN COAST DISCOVERY 5 DAYS

Day 1: Tilt Train – Brisbane to Rockhampton

This morning depart on the Tilt Train and enjoy a smooth and comfortable journey between Brisbane and Rockhampton. Stay the next two nights at Empire Apartment Hotel, Rockhampton.

Day 2: Rockhampton

Spend today at leisure exploring the town of Rockhampton. Stroll along the beautiful Fitzroy River and discover the many restored sandstone Victorian-era buildings. Visit the beautiful Botanic Gardens or head to the Rockhampton Art Gallery where you will find mid-twentieth century Australian art.

Day 3: Capricorn Caves

Transfer by coach to Yeppoon, en route visit the Capricorn Caves. These amazing tropical limestone caves offer a beauty different to that of deep underground caves. Take a tour through large caverns with remarkable decorations, rare ferns and massive

tree roots and occasionally small bats. The domed Cathedral Cave is renowned for its acoustics. At the end of the tour, walk through the pioneer passage on to a swinging suspended bridge in the rainforest. In the afternoon spend time discovering the township of Yeppoon. Stay the next two nights at Salt Yeppoon.

Day 4: Great Keppel Island (L)

Cruise to Great Keppel Island and explore the outstanding beauty of its 17 beaches. Enjoy the many activities on offer including nature walks or spend time relaxing by the water. You'll have the choice of one hour stand up paddle board, kayak or a full day snorkel hire.

Day 5: Tilt Train – Rockhampton to Brisbane

This morning transfer to Rockhampton Railway Station for your return rail journey to Brisbane.

(L = lunch)

5 DAYS | BRISBANE TO BRISBANE

TRAVEL TYPE: Tilt Train

DEPARTS: Mon, Tue, Fri, Sun (19 – 28 Apr, 7 May – 24 Jun, 11 Jul – 2 Aug, 15 Aug – 16 Sep, 30 Oct – 9 Dec 21, 30 Jan – 31 Mar 22)

Adult	From \$1049* [^] per person twin share
Senior	From \$982* [^] per person twin share

HIGHLIGHTS

- Explore Rockhampton's historic Quay Street
- Take a Cathedral Cave Tour
- Swim in the crystal clear waters at Great Keppel Island

INCLUDES

- Return travel on the Tilt Train from Brisbane to Rockhampton – Economy Seat
- 2 nights 4½ star accommodation in Rockhampton
- 2 nights 4½ star accommodation in Yeppoon
- Meals as specified • Capricorn Caves Tour
- Full day Great Keppel Island cruise
- Return coach transfers from Rockhampton to Yeppoon

[^]Prices valid 19 – 28 Apr, 7 May – 24 Jun, 11 Jul – 2 Aug, 15 Aug – 16 Sep, 30 Oct – 9 Dec 21, 30 Jan – 31 Mar 22. Sole use prices also available.





Spirit of Queensland

SPIRIT OF QUEENSLAND RAIL JOURNEY

The Spirit of Queensland takes you along Queensland's coast between Brisbane and Cairns, covering over 1681 kilometres. Travel in comfort while enjoying modern conveniences and friendly services. Stop along the way and experience the amazing diversity and colours of Queensland's coastal towns.

Explore the town of Hervey Bay or enjoy the white sandy beaches of Fraser Island. Discover the islands of the Whitsundays and soak up the vibrant village atmosphere of Airlie Beach. See where rainforest meets the reef in Tropical North Queensland. Wherever you're heading along the coast, the Spirit of Queensland will have you relaxed from the moment you step onboard until you arrive at your destination.

Spend time in the Galley Car with fellow travellers where a range of light refreshments can be purchased throughout the journey. Or if you are travelling in a RailBed, enjoy all-inclusive meals served directly to your seat.

ECONOMY SEAT

Take in the passing scenery from the comfort of a Economy Seat, with generous leg room, on-demand entertainment and food and beverages available from the Galley Car.

- Seat including footrest
- On-demand entertainment
- 240-volt power point, reading light, drink holder
- Showers, toilets and drinking fountains available at the end of each carriage
- Luggage – one item checked-in and one item of carry-on luggage (refer to page 35 for weight and size limits)

RAILBED

Relax in an innovative RailBed, a spacious and comfortable seat by day that converts to a lie-flat bed at night. The bed is made up with fresh linen and pillow by friendly staff. A complimentary towel and amenities pack is provided for your comfort. Each RailBed includes a wide flat screen with on-demand entertainment options.

- All-inclusive meals served directly to your seat
- RailBed turn-down with fresh bed linen, towel and amenities pack
- On-demand entertainment
- 240-volt power point, reading light and drink holder
- Showers, toilets and drinking fountains available at the end of each carriage
- Luggage – two items checked-in and one item of carry-on luggage (refer to page 35 for weight and size limits)



RailBed by Night

RAILBUS COACH CONNECTION

The RailBus Coach Connection offers a convenient transfer from Proserpine Station to Airlie Beach and from Maryborough West to Hervey Bay (Southbound journeys) and can be booked as part of your rail travel.



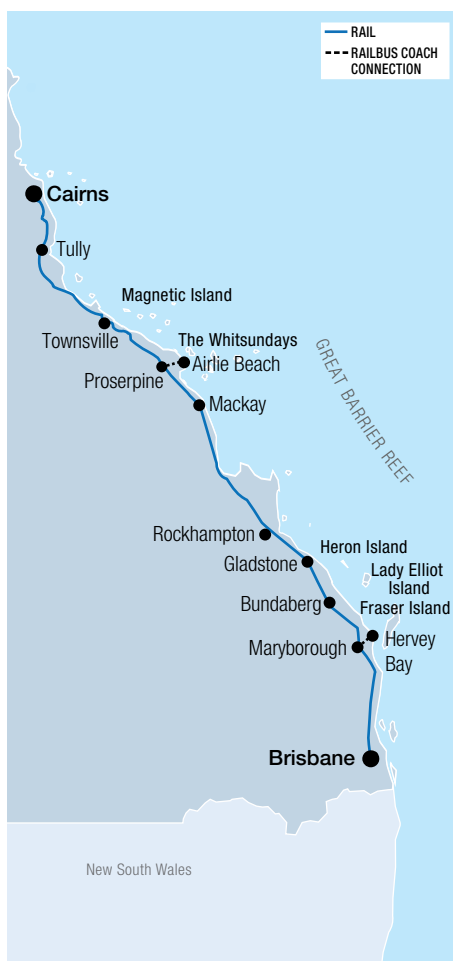
RailBed by Day



Economy Seat



Airlie Beach, Queensland



RAIL FARES

BRISBANE TO AIRLIE BEACH (VICE VERSA)

Adult Economy Seat	\$190*
Senior Economy Seat	\$153*
Adult RailBed	\$329*
Senior RailBed	\$280*

BRISBANE TO TOWNSVILLE

Adult Economy Seat	\$189*
Senior Economy Seat	\$158*
Adult RailBed	\$332*
Senior RailBed	\$285*

BRISBANE TO CAIRNS

Adult Economy Seat	\$222*
Senior Economy Seat	\$185*
Adult RailBed	\$390*
Senior RailBed	\$335*

CAIRNS TO AIRLIE BEACH

Adult Economy Seat	\$122*
Senior Economy Seat	\$96*

CAIRNS TO HERVEY BAY

Adult Economy Seat	\$224*
Senior Economy Seat	\$181*
Adult RailBed	\$375*
Senior RailBed	\$314*

TOWNSVILLE TO BUNDABERG

Adult Economy Seat	\$162*
Senior Economy Seat	\$135*
Adult RailBed	\$285*
Senior RailBed	\$245*

TIMETABLE

BRISBANE TO CAIRNS

Distance:	1681 kms
Duration:	25 hrs

Brisbane to Cairns (overnight)

Departs Mon, Tue, Wed, Fri, Sat

Brisbane	3:45pm
Proserpine	6:32am [^]
Townsville	9:53am
Arrive Cairns	4:30pm

Cairns to Brisbane (overnight)

Departs Mon, Wed, Thu, Fri, Sun

Cairns	8:35am
Townsville	2:54pm
Proserpine	6:11pm [^]
Maryborough West	4:50am [^]
Arrive Brisbane	9:20am

Timetable is correct at time of printing and is subject to change without notice. [^]RailBus Coach Connection service available.

SPIRIT OF QUEENSLAND HOLIDAY PACKAGES



AIRLIE BEACH ESCAPE 5 DAYS

Day 1: Spirit of Queensland – Brisbane to Proserpine (D)
Join the Spirit of Queensland this afternoon and travel north overnight to Proserpine. Sit back and relax in your spacious RailBed while an ever-changing landscape unfolds through your panoramic window. Overnight on board the Spirit of Queensland.

Day 2: Proserpine to Airlie Beach (B)
On arrival in Proserpine, transfer to Airlie Beach on the RailBus Coach Connection to your accommodation. Spend the morning at leisure exploring the village of Airlie Beach. Soak up its relaxed atmosphere and visit the vast collection of eclectic shops and cafés or cool off in the Airlie Beach lagoon.
In the afternoon take in a Whitsunday sunset as you cruise around Pioneer Bay on a 62 foot rigged schooner. Enjoy a welcome glass of sparkling wine and nibbles. Stop at Turtle Bay for some turtle spotting. Stay the next three nights at Water's Edge Resort, Airlie Beach.

Day 3: Whitehaven Beach and Hamilton Island (BL)
Take a full day cruise to Whitehaven Beach and Hamilton Island. Find out why Whitehaven is one of the most photographed beaches in Australia. Step ashore and enjoy the warm crystal clear waters and the fine white silica sand of Whitehaven Beach. Explore Hamilton Island and discover all its attractions before lunch at the Marina Tavern.
Day 4: Airlie Beach (B)
Today is free for you to explore more of the beautiful Whitsunday region. Hike to the top of Mount Whitsunday for panoramic views of the marina and islands or spend the day relaxing by the pool.
Day 5: Airlie Beach (B)
Your holiday concludes this morning upon check-out from the hotel.
(B = breakfast, L = lunch, D = dinner)

5 DAYS | BRISBANE TO AIRLIE BEACH

TRAVEL TYPE: Spirit of Queensland	
DEPARTS: Mon, Tue, Wed, Fri, Sat (1 Apr – 20 Dec 21, 8 Jan – 31 Mar 22)	
Adult	From \$905*[^] per person twin share
Senior	From \$849*[^] per person twin share

- HIGHLIGHTS**
- Discover Airlie Beach
 - Spend time at Hamilton Island Marina
 - Walk along the fine white sand at Whitehaven Beach
- INCLUDES**
- One way overnight travel on the Spirit of Queensland from Brisbane to Proserpine – RailBed
 - 3 nights 4 star accommodation in Airlie Beach
 - Meals as specified • Sunset Sail
 - Full day Hamilton Island and Whitehaven Tour
 - One way RailBus Coach Connection from Proserpine Railway Station to Airlie Beach accommodation
- [^]Prices valid 1 Apr – 20 Dec 21, 8 Jan – 31 Mar 22. Sole use prices also available.**



HAMILTON ISLAND GETAWAY 6 DAYS

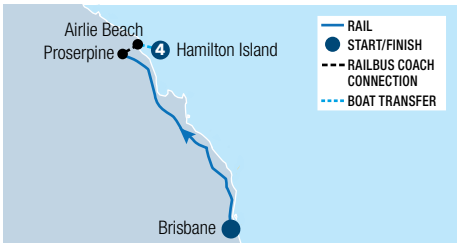
Day 1: Spirit of Queensland – Brisbane to Proserpine (D)
Travel on board the Spirit of Queensland this afternoon to Proserpine. Unwind in your RailBed as you take in the stunning scenery. Overnight on board the Spirit of Queensland.
Day 2: Proserpine to Hamilton Island (B)
Arrive in Proserpine and be transferred to Airlie Beach for your launch transfer over to Hamilton Island. Spend the remainder of the day exploring the island. Stay the next four nights at the Reef View Hotel.
Day 3: Hamilton Island (B)
Hamilton Island is surrounded by idyllic coral fringed beaches and is the perfect base for the ultimate Great Barrier Reef experience. Explore the many facilities, shops and eateries on the island.
Day 4: Hamilton Island (B)
Today discover the many watersports activities available including, snorkelling, catamarans, windsurfing

and stand-up paddle boards. This evening, take a captivating sunset sail cruise. Relax as you watch the shoreline slip away as you cruise around the Whitsundays Islands. Enjoy light nibbles and a drink, as you gaze at the sunset.
Day 5: Hamilton Island (B)
Spend the day exploring the island or join one of the many excursions available to explore the Whitsundays (own expense). On the island, be spoiled for choice with many activities including beach volleyball, sea kayaking, round of golf and scenic helicopter flights (own expense). Or perhaps you'd prefer to do nothing at all and simply relax around one of six pools or on stunning Catseye Beach.
Day 6: Hamilton Island (B)
This morning check-out from the hotel and take the return launch back to Airlie Beach, where your holiday concludes.
(B = breakfast, D = dinner)

6 DAYS | BRISBANE TO HAMILTON ISLAND

TRAVEL TYPE: Spirit of Queensland	
DEPARTS: Mon, Tue, Wed, Fri, Sat (6 Apr – 16 Aug, 27 Aug – 16 Dec 21, 8 Jan – 31 Mar 22)	
Adult	From \$1309*[^] per person twin share
Senior	From \$1259*[^] per person twin share

- HIGHLIGHTS**
- Enjoy a sunset sail cruise
 - Use of the many facilities and activities on Hamilton Island
 - Relax on Catseye Beach
- INCLUDES**
- One way overnight travel on the Spirit of the Queensland from Brisbane to Proserpine – RailBed
 - 4 nights 4 star accommodation on Hamilton Island
 - Meals as specified
 - Sunset Sail Cruise
 - Return launch transfer from Airlie Beach to Hamilton Island
- [^]Prices valid 6 Apr – 16 Aug, 27 Aug – 16 Dec 21, 8 Jan – 31 Mar 22. Sole use prices also available.**



***Prices** are a guide only, subject to change and availability and are in Australian Dollars. From prices for rail packages are per person per package twin share, unless otherwise specified and based on the lowest room category for travel in low season. For full terms and conditions including pricing, conditions and senior concession eligibility, refer to the Booking Conditions at the back of this brochure.



Alma Bay, Magnetic Island, Queensland

TOWNSVILLE & MAGNETIC ISLAND EXPERIENCE 7 DAYS

Day 1: Spirit of Queensland – Brisbane to Townsville (D)
Join the Spirit of Queensland this afternoon and travel north overnight to Townsville. Overnight on board the Spirit of Queensland.

Day 2: Townsville (B)

Arrive in Townsville this morning and spend the rest of the day at leisure. Stay the next two nights at Rydges Southbank Townsville.

Day 3: Townsville (B)

Enjoy a leisurely day exploring the city. Choose to take in the iconic sites of Townsville including Palmer Street, Castle Hill and The Strand. Spend time at the Museum of Tropical Queensland where you can learn about the history and heritage of North Queensland (own expense).

Day 4: Townsville to Magnetic Island (B)

Cruise to beautiful Magnetic Island on board a high speed catamaran and pre-check into your hotel located walking

distance from the ferry terminal. Stay the next three nights at Peppers Blue on Blue Resort, Magnetic Island.

Day 5: Magnetic Island

Spend the morning discovering the iconic beauty of Magnetic Island from above and below the water on a personalised tour. Snorkel fringing reefs, explore many of the 23 bays and beaches and learn about the rich history of Magnetic Island as you travel around the island.

Day 6: Magnetic Island

Today explore the island at leisure. Visit the Bungalow Bay Koala Sanctuary located on the island and meet native wildlife (own expense).

Day 7: Magnetic Island to Townsville

Travel by ferry back to the mainland, where your holiday concludes.

(B = breakfast, D = dinner)

7 DAYS | BRISBANE TO TOWNSVILLE

TRAVEL TYPE: Spirit of Queensland

DEPARTS: Fri, Sat (2 Apr 21 – 31 Mar 22)*

Adult	From \$1019*[^] per person twin share
Senior	From \$974*[^] per person twin share

HIGHLIGHTS

- Take a walk up Castle Hill
- Visit The Strand beachfront promenade
- Explore Magnetic Island's beautiful beaches

INCLUDES

- One way overnight travel on the Spirit of Queensland from Brisbane to Townsville – RailBed
- 2 nights 4 star accommodation in Townsville
- 3 nights 4½ star accommodation on Magnetic Island
- Meals as specified
- Half day Magnetic Island Discovery Tour
- Return ferry transfers to Magnetic Island
- One way transfer from Townsville Railway Station to Townsville accommodation

[^]Prices valid 2 – 29 Apr, 5 Nov – 24 Dec 21,

7 Jan – 31 Mar 22.

+Blockout dates apply. Sole use prices also available.



Palm Cove, Tropical North Queensland

PALM COVE DISCOVERY 6 DAYS

Day 1: Spirit of Queensland – Brisbane to Cairns (D)

Join the Spirit of Queensland this afternoon and travel north overnight to Cairns. Enjoy the culinary delights prepared using the freshest of Queensland produce, sourced from within 100 kilometres of the rail corridor. Overnight on board the Spirit of Queensland.

Day 2: Cairns (BL)

This morning the train passes through the sugar cane fields of North Queensland. Sit back and relax as you watch the changing landscapes. Arrive into Cairns this afternoon and transfer by coach to your accommodation in Palm Cove. Stay the next four nights at The Reef House & Spa Palm Cove.

Day 3: Palm Cove (B)

Spend the day at leisure. Explore the village of Palm Cove, wander the foreshore, take in some shopping or relax over a long lunch at one of the many restaurants and cafés situated along the esplanade.

Day 4: Atherton Tableland (BL)

Today embark on a delicious Gourmet Food and Wine tasting tour showcasing the spectacular Atherton Tablelands. Visit eight unique sites and throughout the day you will sample wines, spirits, cheeses, coffee, rainforest condiments, chocolates, tropical fruits and kangaroo and crocodile meat.

Day 5: Palm Cove (B)

A full day of leisure to discover the natural attractions of Tropical North Queensland. Explore the Daintree Rainforest, see ancient rock art or snorkel the Great Barrier Reef (own expense). In the afternoon head to Palm Cove's beautiful beachfront and enjoy a spectacular sunset.

Day 6: Palm Cove (B)

Your holiday concludes this morning upon check-out from the hotel.

(B = breakfast, L = lunch, D = dinner)

6 DAYS | BRISBANE TO CAIRNS

TRAVEL TYPE: Spirit of Queensland

DEPARTS: Mon, Tue, Wed, Sat (3 Apr 21 – 31 Mar 22)*

Adult	From \$1235*[^] per person twin share
Senior	From \$1177*[^] per person twin share

HIGHLIGHTS

- Food and wine tasting on the Atherton Tablelands
- Stroll along the Palm Cove Esplanade

INCLUDES

- One way overnight travel on the Spirit of Queensland from Brisbane to Cairns – RailBed
- 4 nights 4½ star accommodation in Palm Cove
- Meals as specified
- Full day Brett's Outback Tasting Adventures Tour
- One way transfer from Cairns Railway Station to Palm Cove

[^]Prices valid 1 Nov – 19 Dec 21, 4 Jan – 31 Mar 22.

+Blockout dates apply. Sole use prices also available.



SPIRIT OF QUEENSLAND HOLIDAY PACKAGES



Outer Barrier Reef, Tropical North Queensland

CAIRNS RAIL & REEF 7 DAYS

Day 1: Spirit of Queensland – Brisbane to Cairns (D)
Join the Spirit of Queensland and travel to Cairns. Overnight on board the Spirit of Queensland.

Day 2: Cairns (BL)

Arrive into Cairns this afternoon and make your own way to your accommodation. Stay the next five nights at Hilton Cairns.

Day 3: Great Barrier Reef (BL)

Today make your own way to the Reef Fleet Terminal for your reef cruise. Take a fast catamaran cruise to a floating activity platform situated right on the Outer Great Barrier Reef. Snorkel, visit the underwater observatory, cruise in a semi-sub or just relax on the sundeck with a delicious buffet lunch.

Day 4: Cairns (B)

Spend the day at leisure exploring the city of Cairns. Take a stroll along Cairns Esplanade and cool off in the lagoon. Admire indigenous art at the Pandanus Aboriginal

Art Gallery or see thousands of fish and reptiles at the Cairns Aquarium (own expense).

Day 5: Kuranda (B)

Today experience the historic Kuranda Scenic Railway journey to Kuranda. There is plenty of time to explore the village of Kuranda with many attractions and local markets. This afternoon return on the Skyrail Rainforest Cableway, gliding silently over the rainforest as you enjoy beautiful views along the way.

Day 6: Cairns (B)

Explore Cairns at leisure. Visit the wide range of shops and restaurants, spend time at the Cairns Esplanade Lagoon and visit the Cairns Night Markets.

Day 7: Cairns (B)

Your holiday concludes this morning upon check-out from the hotel.

(B = breakfast, L = lunch, D = dinner)

7 DAYS | BRISBANE TO CAIRNS

TRAVEL TYPE: Spirit of Queensland

DEPARTS: Mon, Wed, Sat (2 Apr – 20 Dec 21, 3 Jan – 31 Mar 22)

Adult **From \$1479*[^]**
per person twin share

Senior **From \$1425*[^]**
per person twin share

HIGHLIGHTS

- Snorkel on the Great Barrier Reef
- Visit the popular Kuranda Markets
- Ride on the Skyrail Rainforest Cableway

INCLUDES

- One way overnight travel on the Spirit of Queensland from Brisbane to Cairns – RailBed
- 5 nights 4 star accommodation in Cairns
- Meals as specified
- Full day Great Barrier Reef Cruise
- Full day Kuranda, Scenic Rail and Skyrail Tour

[^]Prices valid 2 Apr – 20 Dec 21, 3 Jan – 31 Mar 22.
Sole use prices also available.



Cape Tribulation, Tropical North Queensland

CAPE TRIBULATION & COOKTOWN ADVENTURE 7 DAYS

Day 1: Spirit of Queensland – Brisbane to Cairns (D)
Depart on the Spirit of Queensland this afternoon and travel north overnight to Cairns. Overnight on board the Spirit of Queensland.

Day 2: Cairns (BL)

Arrive into Cairns and stay overnight at DoubleTree by Hilton.

Day 3: Cairns to Cape Tribulation (BL)

Travel north along the scenic route to Mossman Gorge and take a guided walk through the World Heritage listed rainforest. Embark on a one hour Daintree River cruise. Stay overnight in the Daintree, Cape Tribulation.

Day 4: Cape Tribulation to Cooktown (L)

Today continue travelling through the heart of this World Heritage Listed area on the Bloomfield Track. Discover Black Mountain which is steeped in Aboriginal legend before arriving in Cooktown. Stay overnight in Cooktown.

Day 5: Cooktown to Cairns (L)

Enjoy the morning at leisure and spend time discovering Cooktown. Experience the unspoilt beauty of the area, which remains much the same as Cook knew it in 1770.

This afternoon depart Cooktown via the inland road, The Mulligan Highway, travelling through a diverse landscape of cattle stations and the Palmer River Gold mine region. Arrive back into Cairns this evening. Stay the next two nights at DoubleTree by Hilton.

Day 6: Cairns (B)

Spend the day at leisure exploring Cairns. Visit the wide range of shops and restaurants or relax at Cairns Esplanade Lagoon.

Day 7: Cairns (B)

Your holiday concludes upon check-out from the hotel.

(B = breakfast, L = lunch, D = dinner)

7 DAYS | BRISBANE TO CAIRNS

TRAVEL TYPE: Spirit of Queensland

DEPARTS: Mon, Fri (3 May – 30 Nov 21)⁺

Adult **From \$1795*[^]**
per person twin share

Senior **From \$1740*[^]**
per person twin share

HIGHLIGHTS

- Drive through the rainforest on the Bloomfield Track
- Spot crocodiles on a Daintree River cruise
- Explore Cooktown

INCLUDES

- One way overnight travel on the Spirit of Queensland from Brisbane to Cairns – RailBed
- 3 nights 4 star accommodation in Cairns
- 1 night 3½ star accommodation in Cape Tribulation
- 1 night 4 star accommodation in Cooktown
- Meals as specified
- 4WD touring of Daintree, Cape Tribulation and Cooktown

[^]Prices valid 3 May – 27 Jun, 3 Sep – 30 Nov 21. ⁺Blockout dates apply. Sole use prices also available.





Port Douglas, Tropical North Queensland



Mossman Gorge, Tropical North Queensland



Barron Falls, Tropical North Queensland

PORT DOUGLAS ESCAPE 8 DAYS

Day 1: Spirit of Queensland – Brisbane to Cairns (D)

Venture from Brisbane to Cairns on the Spirit of Queensland. Relax in your comfortable RailBed and enjoy your evening meal served to your seat. Overnight on board the Spirit of Queensland.

Day 2: Port Douglas (BL)

Arrive into Cairns this afternoon and transfer to your Port Douglas accommodation. Stay the next three nights at Regal Port Douglas.

Day 3: Cape Tribulation and Daintree (BL)

Enjoy a day exploring the World Heritage Listed Daintree and Cape Tribulation National Park. Discover the secrets of the ancient rainforest and pristine waters of Mossman Gorge on a guided walk. Take a relaxing cruise along the Daintree River, keeping an eye out for crocodiles and other wildlife. Marvel at the spectacular views from Alexandra Lookout before a delicious tropical lunch at a private rainforest setting. After lunch, discover Cape Tribulation on a guided rainforest and beach walk.

Day 4: Port Douglas (B)

Spend the day at leisure exploring the vibrant village of Port Douglas. Discover the many cafés and galleries along Macrossan Street or take a stroll along palm fringed Four Mile Beach. During the late afternoon, unwind on a twilight cruise and witness a tropical sunset over the Coral Sea.

Day 5: Port Douglas to Cairns (B)

This morning transfer to Cairns on one of the most scenic drives in Australia. Stay the next three nights at DoubleTree by Hilton Cairns.

Day 6: Kuranda (B)

Today travel on board the Kuranda Scenic Railway and be amazed by the breathtaking views as you wind your way up to Kuranda. Once in Kuranda, visit the popular markets or spend time at the Kuranda Butterfly Sanctuary (own expense).

Depart Kuranda on the Skyrail and glide above the canopy of the World Heritage Listed rainforest. Take advantage of the two stops en route to enjoy a walk through the rainforest or visit the CSIRO Interpretive Centre.

Day 7: Cairns (B)

Today you are free to explore the city of Cairns. Take a relaxing stroll along the foreshore, spend time at one of the many cafés and restaurants on the Cairns Esplanade or take a dip in the lagoon. Alternatively, take a tour to the Great Barrier Reef to make the most of your time in Tropical North Queensland (own expense).

Day 8: Cairns (B)

Your holiday concludes after breakfast.

(B = breakfast, L = lunch, D = dinner)

8 DAYS | BRISBANE TO CAIRNS

TRAVEL TYPE: Spirit of Queensland

DEPARTS: Mon, Tue, Fri, Sat (1 Apr – 16 Dec 21, 10 Jan – 31 Mar 22)

Adult	From \$1859* [^] per person twin share
Senior	From \$1806* [^] per person twin share

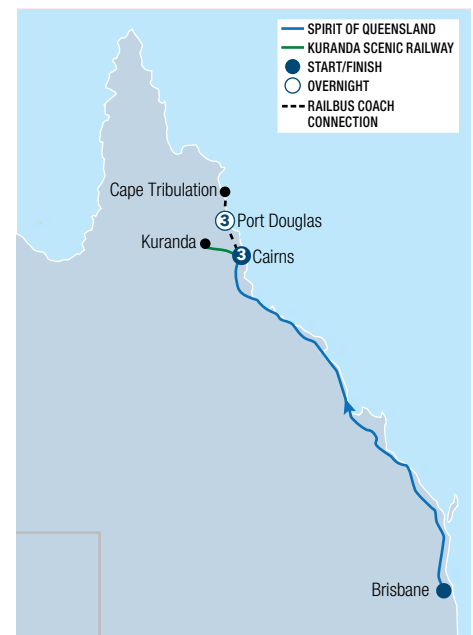
HIGHLIGHTS

- Take a guided walk through Mossman Gorge
- Cruise on the Daintree River
- See where the rainforest meets the reef at Cape Tribulation
- Enjoy a sunset sail cruise
- Discover the tropical town of Port Douglas
- Swim in the calm waters of Four Mile Beach
- Explore the city of Cairns
- Ride on the Skyrail Rainforest Cableway
- Visit the rainforest village of Kuranda
- Stop at Barron Falls and take in the stunning views of this picturesque waterfall

INCLUDES

- One way overnight travel on the Spirit of Queensland from Brisbane to Cairns – RailBed
- 3 nights 4 star accommodation in Port Douglas
- 3 nights 4½ star accommodation in Cairns
- Meals as specified
- Full day Cape Tribulation and Daintree Rainforest Tour
- Sailaway Sunset Sail Cruise
- Full day Kuranda, Scenic Rail and Skyrail Tour
- One way transfer from Cairns Railway Station to Port Douglas
- One way transfer from Port Douglas to Cairns accommodation

[^]Prices valid 1 Apr – 16 Dec 21, 10 Jan – 31 Mar 22 and include Environmental Management Charge of \$3.50 per person to be paid directly to the tour operator on the day of the tour by you. Sole use prices also available.



SPRIT OF QUEENSLAND HOLIDAY PACKAGES



Mission Beach, Tropical North Queensland



Heart Pontoon, Whitsundays, Queensland



Castaways Resort and Spa, Mission Beach, Tropical North Queensland

SOUTHERN COASTAL RAIL EXPLORER 8 DAYS

Day 1: Spirit of Queensland – Cairns to Tully

Board the Spirit of Queensland this morning and travel from Cairns to Tully. On arrival in Tully, be transferred to your accommodation at Mission Beach. Stay the next three nights at Castaways Resort and Spa, Mission Beach.

Day 2: Dunk Island (BL)

Today take a ten minute ride on the water taxi to Dunk Island. Enjoy a picnic lunch and spend the day discovering the pristine beaches and natural beauty of the island. There are plenty of scenic walking trails on the island to be explored.

Day 3: Mission Beach (B)

Enjoy a leisurely day exploring Mission Beach. Nestled against lush tropical rainforest, Mission Beach is home to a variety of restaurants, galleries, gift stores and boutiques.

Explore the beaches by kayak or fish from the beach (all own expense). Walk up to the top of Bicton Hill for spectacular views over to Dunk and Hinchinbrook Islands while hopefully spotting a Cassowary on the way.

Day 4: Spirit of Queensland – Tully to Proserpine (B)

Transfer from your accommodation back to Tully to re-join the Spirit of Queensland. Sit back and relax as you wind your way down the coast and arrive in the early evening at Proserpine.

Transfer by RailBus Coach Connection to your accommodation in Airlie Beach. Stay the next three nights at Water's Edge Resort, Airlie Beach.

Day 5: Great Barrier Reef (BL)

Experience the underwater playground of the Great Barrier Reef on a full day cruise. Venture out to a permanent pontoon adjacent to spectacular coral walls. View the reef and its colourful marine life as you snorkel in the clear blue waters or discover the amazing underwater world from the semi-submersible submarine.

Day 6: Airlie Beach (B)

Spend the day at leisure discovering the village of Airlie Beach with its palm-fringed beaches, waterfront parks and outdoor dining. Walk along the Bicentennial Boardwalk from Port of Airlie to Cannonvale Beach or swim in the Airlie Beach Lagoon. Venture further a field and take a day trip to Whitehaven Beach (own expense).

Day 7: Spirit of Queensland – Proserpine to Brisbane (BD)

This morning is free for you to explore more of Airlie Beach, before transferring back to Proserpine to re-join the Spirit of Queensland to continue your southbound trip. Overnight on board the Spirit of Queensland.

Day 8: Brisbane (B)

Arrive into Brisbane this morning, where your holiday concludes.

(B = breakfast, L = lunch, D = dinner)

8 DAYS | CAIRNS TO BRISBANE

TRAVEL TYPE: Spirit of Queensland

DEPARTS: Mon, Thu, Fri (1 Apr – 19 Dec 21, 6 Jan – 31 Mar 22)

Adult **From \$1679*[^]**
per person twin share

Senior **From \$1598*[^]**
per person twin share

HIGHLIGHTS

- Explore Mission Beach
- Take a picnic lunch to Dunk Island
- Walk to the top of Mt Kootaloo on Dunk Island
- Pass through sugar-cane fields as you travel from Mission Beach to Proserpine
- Snorkel the Great Barrier Reef and see magnificent corals and marine life
- Cruise through Whitsunday Islands National Park on your way to the Outer Great Barrier Reef
- Visit Airlie Beach Lagoon

INCLUDES

- One way travel on the Spirit of Queensland from Cairns to Tully – Economy Seat
- One way travel on the Spirit of Queensland from Tully to Proserpine – Economy Seat
- One way overnight travel on the Spirit of Queensland from Proserpine to Brisbane – RailBed
- 3 nights 4 star accommodation in Mission Beach
- 3 nights 4 star accommodation in Airlie Beach
- Meals as specified
- Return water taxi, transfers to Dunk Island
- Full day Great Barrier Reef Tour
- Return transfers from Tully Railway Station to Mission Beach accommodation
- Return RailBus Coach Connection from Proserpine Railway Station to Airlie Beach accommodation

[^]Prices valid 1 Apr – 19 Dec 21, 6 Jan – 31 Mar 22.
Sole use prices also available.





Kuranda Scenic Railway, Tropical North Queensland

KURANDA SCENIC RAILWAY

The Kuranda Scenic Railway is an iconic rail journey that meanders through the World Heritage Listed rainforest of the Barron Gorge National Park to the village of Kuranda.

Whether you join at Cairns, Freshwater or Kuranda Station, the journey aboard the historic red timber carriages takes you through breathtaking scenery, towering waterfalls and deep ravines. The train slowly winds its way through 15 hand-made tunnels and over 37 bridges.

Hear about the journey, the flora and fauna and the incredible history of the railway line through the available audio commentary or via Kuranda Scenic Railway app. A journey on the Kuranda Scenic Railway will leave you with unforgettable memories.

HERITAGE CLASS

Experience old world charm in refurbished original, red-wooden heritage carriages.

- Souvenir trip guide
- Audio commentary

- 10 minute photo stop at Barron Falls viewing platform
- Filtered water available in each carriage
- Toilets available in each carriage

GOLD CLASS

Travel in the splendour of Gold Class aboard Kuranda Scenic Railway. The heritage carriages are adorned in handcrafted Victorian inspired décor with club lounge style seating.

- Welcome drink served prior to departure
- Dedicated host service
- Individual lounge-style seating
- Souvenir trip guide
- 10 minute photo stop at Barron Falls viewing platform
- Kuranda Scenic Railway gift pack
- Morning or Afternoon Tea featuring a selection of Queensland and local Tablelands produce and beverages
- Toilets available in each carriage



KURANDA, SCENIC RAIL & SKYRAIL

From Cairns, board the Kuranda Scenic Railway and explore the quaint village of Kuranda. Depart Kuranda on the Skyrail and glide above the canopy of World Heritage Listed rainforest.

Duration: 8 hours 15 minutes
Departs: Daily from Cairns at 7:30am



KURANDA & HARTLEY'S CROCODILES

Combine the Kuranda Scenic Railway and Skyrail Rainforest Cableway with Hartley's Crocodile Adventures. Spend the afternoon exploring the park and enjoy a boat cruise on Hartley's lagoon.

Duration: 10 hours 30 minutes
Departs: Daily from Cairns at 7am

RAIL FARES

CAIRNS TO KURANDA

Adult Heritage Class	\$50*
Senior Heritage Class	\$40*
Adult Gold Class	\$99*
Senior Gold Class	\$89*

TIMETABLE

CAIRNS TO KURANDA

Distance:	34 kms
Duration:	1 hr 55 mins

Departs Daily

Cairns	8:30am 9:30am
--------	------------------

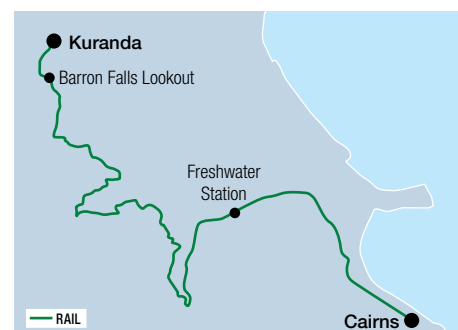
Departs Daily

Freshwater	8:55am 9:55am [^]
------------	-------------------------------

Departs Daily

Kuranda	2:00pm 3:30pm [^]
---------	-------------------------------

Timetable is correct at time of printing and is subject to change without notice. [^]Gold Class operates on these services.



KURANDA, SCENIC RAIL, RAINFORESTATION & SKYRAIL

Travel on the historic Kuranda Scenic Rail to Kuranda. Spend time exploring the 40 hectares of lush gardens and wildlife at Rainforestation, Transfer back to Cairns on the Skyrail Rainforest Cableway.

Duration: 11 hours
Departs: Daily from Cairns at 7:15am

1 Apr 21 – 31 Mar 22

\$171*

1 Apr 21 – 31 Mar 22

\$221*

1 Apr 21 – 31 Mar 22

\$235*

*Prices are a guide only, subject to change and availability and are in Australian Dollars. Prices for rail and tours are per person, unless otherwise specified. For full terms and conditions including pricing, conditions and senior concession eligibility, refer to the Booking Conditions at the back of this brochure.



Admire the emerald waterways framed by towering red sandstone cliffs as you cruise along Lawn Hill Gorge, Queensland



Savannahlander



Undara Lava Caves, Mount Surprise, Queensland

GULF SAVANNAH RAIL

Venture deep into Gulf Savannah Country and discover where the outback meets the sea. Rugged by nature, the Gulf Savannah is home to great fishing, pioneer heritage and unique landscapes. Travel in the footsteps of the early explorers and drovers as you experience this fascinating region on the Gulflander and Savannahlander.

NORMANTON & CROYDON

Established as a Gold Rush port, Normanton is the Gulf Savannah's largest town. Stop by the Victorian era Normanton Station or venture just out of town and visit Burke and Wills Camp 119 to learn of this ill fated expedition. Explore the historic gold mining township of Croydon. Peek into pioneering history as you wander through Croydon's Heritage Precinct and visit the courthouse which dates back to 1887.

KARUMBA

Situated on the Gulf of Carpentaria, Karumba is Australia's commercial prawning and Barramundi capital. Take a tour of the Barramundi Discovery Centre and learn about its live breeding program or take a cruise through the Port of Karumba estuary. Enjoy some of Australia's best seafood as you watch the sun sink into the Gulf of Carpentaria at Karumba.

SAVANNAH COUNTRY

Embark on a rail trip from Cairns to the remote heart of Queensland's Gulf Country on the Savannahlander. On this unique rail journey, spend time exploring the historic outback towns of Almaden, Mount Surprise and Forsyth at a relaxed pace. Take the opportunity to silently cruise through the breathtaking sandstone escarpments of Cobbold Gorge on a solar-powered boat. Walk into the world's largest volcanic lava tubes formed 190,000 years ago at Undara National Park.

BOODJAMULLA NATIONAL PARK

Travel towards the Northern Territory border and be rewarded with a stunning lush oasis set in a landscape of dry semi-arid countryside at Boodjamulla National Park. Meander the waterways of the national park by canoe or discover waterholes and panoramic views of sandstone cliffs on one of six walking tracks. Learn about the connection between the Waanyi Aboriginal people and their land on the Rainbow Serpent track and marvel at rock art on the Wild Dog Dreaming track.



Gulflander

THE GULFLANDER RAIL JOURNEY

Step back in time and discover a rich pioneering history and the incredible Gulf Savannah country aboard the Gulflander. From wetlands and grasslands to the arid Savannah, the 1950 railmotor ventures through countryside that most people would never see.

Experience a friendly atmosphere and be entertained along the way with a unique insight into the rich history, fascinating trivia, species identification, amusing stories and colourful characters through interpretative commentary provided by the accredited Savannah Guide driver.

Affectionately said to go from “nowhere to nowhere”, the Heritage-listed railway line from Normanton to Croydon was never connected to

the state rail network and remains the only line in Queensland still measured in miles. The line retains the original rail and sleepers laid between 1888 and 1891, when it was constructed to connect the once bustling port of Normanton to the rich gold fields of Croydon.

GULFLANDER SEAT

- Informative driver trip commentary
- Complimentary souvenir trip guide
- Morning tea refreshment at Blackbull Siding, the traditional stop since 1891
- Drinking water and toilet facilities available



Normanton Railway Station, Queensland

RAIL FARES

NORMANTON TO CROYDON (VICE VERSA)

Adult Economy Seat	\$82*
Senior Economy Seat	\$48*

INCLUDES

- Morning Tea

TIMETABLE

NORMANTON TO CROYDON

Distance:	152 kms
Duration:	5 hrs

Normanton to Croydon

Departs Wed

Normanton	8:30am
Arrive Croydon	1:30pm

Croydon to Normanton

Departs Thu

Croydon	8:30am
Arrive Normanton	1:30pm

Timetable is correct at time of printing and is subject to change without notice.

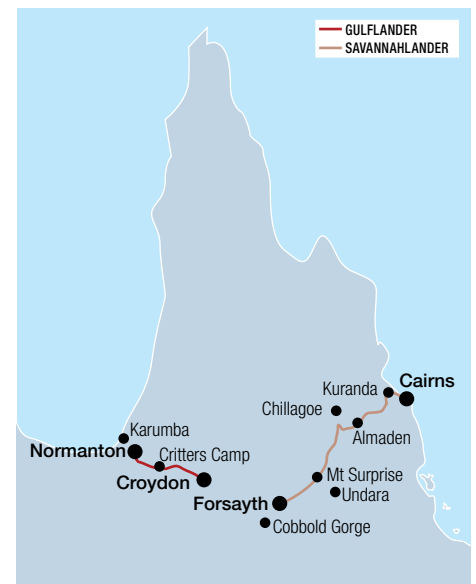
SAVANNAHLANDER RAIL JOURNEY

Experience the heritage and rugged natural beauty of the Savannah Country as you travel from Cairns to Forsyth on the Savannahlander.

Departing once a week from March to November, the Savannahlander stops overnight at three different outback towns, including Almaden, Forsyth and Mount Surprise.

Enjoy the hospitality of the locals along the tracks when you check-in to your accommodation or relax with a hearty meal at one of the local businesses.

Ask your travel agent for timetable and prices.



GULF SAVANNAH HOLIDAY PACKAGES



Cobbold Gorge, Queensland

GULF SAVANNAH EXPERIENCE 6 DAYS

Explore the Gulf Savannah region of North Queensland as you journey through a vast range of landscapes from lush tropical rainforest, savannah plains to semi-arid spinifex ranges and experience some of Queensland's most spectacular natural attractions. Discover a rich history of Aboriginal culture, tales of explorers and pioneers and the excitement of the gold rush era as you travel on the Gulflander and Savannahlander.

Day 1: Cairns to Karumba

Depart this morning by coach from Cairns to Karumba. Travel over 700 kilometres, as you cross from coast to coast. Sit back and relax as the landscapes change from the World Heritage Listed rainforest past Kuranda, Atherton Tablelands, then onto remote, untamed reaches of the outback. Arrive into Karumba this afternoon and settle into your accommodation. Stay the next two nights in Karumba.

Day 2: Karumba (B)

Situated on the Gulf of Carpentaria, Karumba is famous for Barramundi fishing. Head to the Karumba Barramundi Hatchery this morning and join a behind the scenes tour. Get to see the hatchery operations and learn about the species of the Southern Gulf strain of Barramundi and spend time hand feeding the fingerlings.

Spend the afternoon at leisure. Perhaps try your luck with a fishing tour or join a nature cruise on the Norman River and Six Mile Cree (all own expense). Finish the day with a sunset cruise on the Norman River (own expense).

Day 3: Karumba to Forsyth (BLD)

This morning transfer from Karumba to Normanton Railway Station. Departing from Normanton Station, embark on the legendary Gulflander for a 140 kilometre journey to Croydon, taking in the diverse Gulf landscape and its rich history.

Enjoy a stop at Blackbull Siding for morning tea, before arriving into Croydon. Spend time exploring the main street of Croydon. Walk around the Croydon

Historic Precinct and learn of the famous Croydon Gold Rush and visit the general store which began operating in 1894.

In the afternoon travel to Forsyth. Enjoy dinner at the Goldfields Hotel followed by a one hour Forsyth By Night tour. Stay the next two nights at Finnigan's Rest, Forsyth.

Day 4: Cobbold Gorge Cruise (BLD)

Transfer from Forsyth to Cobbold Gorge. After lunch, gain an informative insight in to the geology of the rugged sandstone formations before taking a guided bushwalk to the top of the escarpment. It's a relatively easy walk with the reward of a magnificent view of the gorge below.

Then explore Cobbold Gorge as you glide through the spectacular sculpted gorge walls on a boat cruise. This gorge is vastly different from others owing to its extreme narrowness, measuring a mere two metres width in places and featuring spectacular 30 metre cliffs on either side. After the cruise, return to Forsyth and spend the remainder of the afternoon at leisure.

Day 5: Forsyth to Mount Surprise (BD)

Depart on the Savannahlander from Forsyth. The train travels through the Einasleigh Ranges before arriving at Mount Surprise.

Arrive at Mount Surprise and join an afternoon tour of the Undara Lava Tubes. Explore the world's largest, longest and most accessible lava tube system. Overnight at Bedrock Village, Mount Surprise.

Day 6: Mount Surprise to Cairns (B)

This morning join the Savannahlander. Along the way, stop at Bullock Creek Café for a morning tea break (own expense) and then onto Almaden in time for lunch (own expense).

After lunch, the Savannahlander will travel through World Heritage Listed rainforest, stopping briefly at Kuranda and Barron Falls before travelling down the range to Cairns.

(B = breakfast, L = lunch, D = dinner)



Karumba, Queensland



Undara Lava Tubes, Queensland

GULF SAVANNAH HOLIDAY PACKAGES



Savannahlander, Einasleigh, Queensland



Gulflander, Glenore, Queensland



Normanton, Queensland

6 DAYS | CAIRNS TO CAIRNS

TRAVEL TYPE: Gulflander, Savannahlander

DEPARTS: Apr 5, 12, 19, 26 • May 3, 10, 17, 24, 31 • Jun 7, 14, 21, 28 • Jul 5, 12, 19, 26 • Aug 2, 9, 16, 23, 30 • Sep 6, 13, 20, 27 • Oct 4, 11, 18, 25

Adult **From \$1819*[^]**
per person twin share

Senior **From \$1751*[^]**
per person twin share

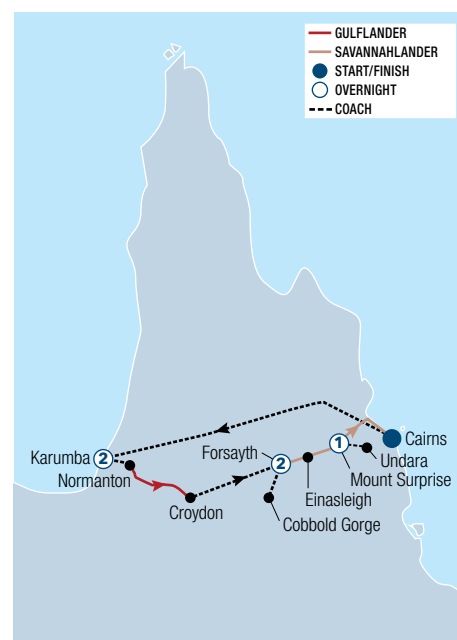
HIGHLIGHTS

- Watch the spectacular sunset over the Gulf of Carpentaria
- Discover the fishing village of Karumba
- Step back in time and stroll through Croydon's general store
- Visit Normanton Railway Station
- Travel from Normanton to Croydon on the iconic Gulflander
- Embark on the scenic journey through semi-arid spinifex ranges on the Savannahlander
- Experience historic Forsyth
- Take a cruise through Cobbold Gorge a hidden oasis
- Walk along Australia's first glass bridge at Cobbold Gorge
- Explore the oldest standing lava tubes on earth
- Learn the rich history of Aboriginal culture

INCLUDES

- One way travel on the Gulflander from Normanton to Croydon
- One way travel on the Savannahlander from Forsyth to Cairns
- 2 nights 3½ star accommodation in Karumba
- 2 nights 3 star accommodation in Forsyth
- 1 night 4 star accommodation in Mount Surprise
- Meals as specified
- Karumba Hatchery Behind-The-Scenes Tour and Hand Feeding Experience
- 1 hour Forsyth By Night Tour
- 3 hour Cobbold Gorge Cruise
- Afternoon Undara Lava Tubes Tour
- One way transfer from Cairns to Karumba
- One way transfer from Karumba to Normanton
- One way transfer from Croydon to Forsyth
- Return transfers from Forsyth to Cobbold Gorge
- Return transfer from Mount Surprise to Undara

[^]Prices valid 5 Apr – 25 Oct 21. Sole use prices also available.



*Prices are a guide only, subject to change and availability and are in Australian Dollars. From prices for rail packages are per person per package twin share, unless otherwise specified and based on the lowest room category for travel in low season. For full terms and conditions including pricing and conditions, refer to the Booking Conditions at the back of this brochure.

GULF SAVANNAH HOLIDAY PACKAGES



Savannahlander, Einasleigh, Queensland



Lawn Hill Gorge, Queensland



Karumba, Queensland

GULF SAVANNAH ADVENTURE 14 DAYS

Day 1: Spirit of the Outback – Brisbane to Longreach (D)

This afternoon depart on the Spirit of the Outback. Overnight on board the Spirit of the Outback.

Day 2: Longreach (BLD)

Arrive into Longreach this afternoon and transfer to your accommodation. Stay the next two nights at Longreach Motor Inn.

Day 3: Longreach (BLD)

Visit the Qantas Founders Museum and the Australian Stockman's Hall of Fame. Late afternoon, join the Drover's Sunset Cruise followed by the entertaining Smithy's Outback Dinner and Show, live on the river stage.

Day 4: Longreach to Cloncurry (BLD)

Follow the Matilda Highway and travel to Cloncurry. Along the way meet outback characters at Aussie pubs, the Blue Heeler and Walkabout Creek. Discover the great Australian story of our Royal Flying Doctor Service at John Flynn Place. Overnight at Gidgee Inn, Cloncurry.

Day 5: Cloncurry to Adels Grove (BLD)

Head north to Adels Grove, an oasis in the outback and just 10 kilometres from the spectacular Boodjamulla National Park. Stay the next two nights at Adels Grove.

Day 6: Adels Grove (BLD)

Today embark on a solar powered cruise through Lawn Hill Gorge and observe the bird life, culture and history of this region.

Day 7: Karumba (BLD)

Travel overland through changing landscapes to Karumba via Normanton. Stay the next two nights at End of the Road Motel, Karumba.

Day 8: Karumba (BLD)

Tour the Barramundi Discovery Centre and learn about the live breeding program. Late afternoon, cruise the

Port of Karumba to a special sand island in the Gulf of Carpentaria for a magnificent gulf sunset.

Day 9: Karumba to Cobbold Gorge (BLD)

Travel to Normanton for a nostalgic rail journey on the famous Gulflander. Visit the historic gold mining townships of Croydon and Georgetown, including an impressive mineral collection display at the TerrEstrial Centre. Arrive at the hidden outback oasis, Cobbold Gorge. Stay the next two nights at Cobbold Gorge Resort.

Day 10: Cobbold Gorge (BLD)

Cruise the magnificent sandstone gorge stocked with a variety of native fish and freshwater crocodiles. Glide silently between towering cliffs in a custom designed punt. Join an optional walk to the top of the escarpment for awesome panoramic views.

Days 11-12: Mount Surprise (BLD)

Board the Savannahlander in Forsyth for a highly personalised rail tour. Travel on this classic 1960s 'silver-bullet' railmotor to Einasleigh and Mount Surprise. Explore the Undara Lava Tubes, part of the world's longest lava flow from a single volcanic crater. Stay the next two nights at Bedrock Village, Mount Surprise.

Day 13: Mount Surprise to Cairns (BLD)

Visit Woodleigh Station, relax with lunch and stroll the expansive gardens. Cruise on Lake Barrine, an enchanting natural lake hidden in World Heritage rainforest. Overnight at Rydges Esplanade, Cairns.

Day 14: Cairns (B)

After breakfast your tour comes to an end.

(B = breakfast, L = lunch, D = dinner)

14 DAYS | BRISBANE TO CAIRNS

TRAVEL TYPE: Spirit of the Outback, Gulflander, Savannahlander

DEPARTS: Apr 27 • May 11 • Jun 8, 22
• Aug 17 • Sep 14, 28

Adult

From \$7475*[^]
per person twin share

Senior

From \$7408*[^]
per person twin share

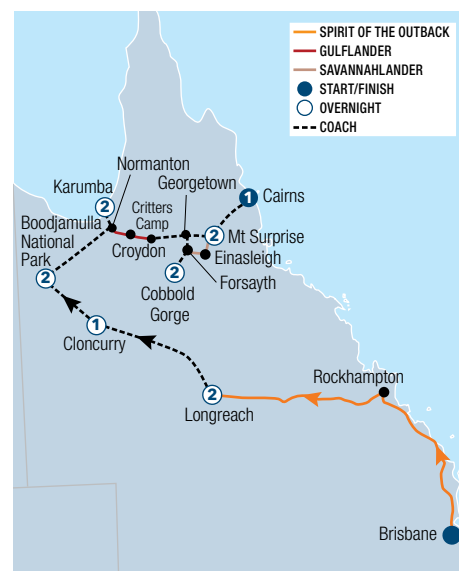
HIGHLIGHTS

- Unwind on a sunset cruise along the Thomson River
- Visit John Flynn Place Museum and discover the Australian story of the Royal Flying Doctor Service
- Travel aboard the Gulflander and Savannahlander trains
- Cruise the crystal waters of Lawn Hill Gorge
- Glide through Cobbold Gorge on an electric powerboat
- Walk along the path of an extinct volcano at Undara

INCLUDES

- One way overnight travel on the Spirit of the Outback from Brisbane to Longreach – First Class Sleeper
- Gulflander and Savannahlander scenic rail tours
- 2 nights 3½ star accommodation in Longreach
- 1 night 4 star accommodation in Cloncurry
- 2 nights 3 star accommodation at Adels Grove
- 2 nights 4 star accommodation at Karumba
- 2 nights 4 star accommodation in Cobbold Gorge
- 2 nights 4 star accommodation in Mount Surprise
- 1 night 4 star accommodation in Cairns
- Meals as specified
- Admission to Australian Stockman's Hall of Fame
- Admission to Qantas Founders Museum
- Drover's Sunset Cruise with Smithy's Outback Dinner & Show
- Admission to Cloncurry Unearthed and John Flynn Place Museum
- Lawn Hill Gorge Cruise
- Sand Island at Sunset Cruise
- Admission to Barramundi Discovery Centre
- Cobbold Gorge Cruise
- Lake Barrine Cruise
- Travel by luxury 4WD coach
- Savannah Guides Operator driver and host
- All coach transfers (excluding arrival and departure transfers)

[^]Prices valid 27 Apr – 28 Sep 21. Sole use prices also available.



For an unforgettable experience head to Winton in Queensland's Outback and witness a spectacular sunset



OUTBACK RAIL

Discover the pioneering spirit of the early settlers as you take an extraordinary rail journey deep into the sunburnt land of Outback Queensland. This is a region of vast landscapes, endless blue skies, country pubs and outback characters. Combine the nostalgia and charm of rail travel on the Spirit of the Outback, Westlander or Inlander with an Outback adventure.

LONGREACH

In the legendary township of Longreach, be welcomed by the warm outback hospitality at family-run homesteads. Learn of the pioneering years through innovative museums, attractions and exhibitions at The Australian Stockman's Hall of Fame and Qantas Founders Museum. Cruise along the Thomson River and take in a breathtaking sunset.

SOUTH WEST QUEENSLAND

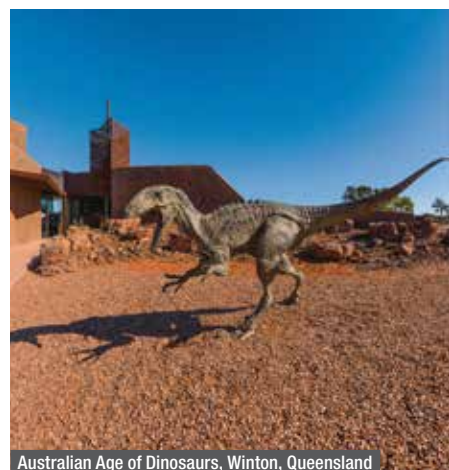
Explore the heart of the outback including Charleville, Roma and Birdsville. Cast your eyes to the sky in Charleville at the Cosmos Centre and Observatory. Roma is peppered with prehistoric sites and Aboriginal rock art. Between the Simpson and Sturt Deserts is Birdsville, best known for its famous pub and annual race meeting.

WINTON

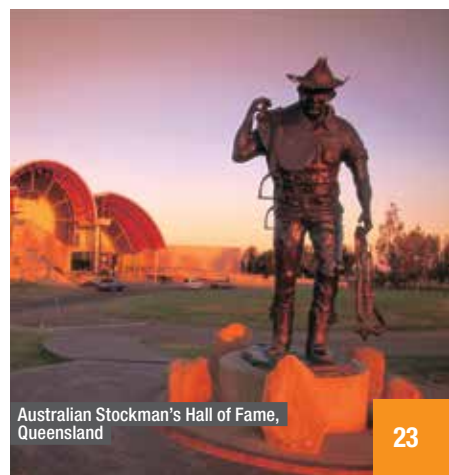
Best known as the place that Banjo Paterson wrote Waltzing Matilda in 1895, Winton is also where Qantas was founded in 1920. A short distance from Winton, discover the 93 million year old fossils of Lake Quarry which captures the only recorded dinosaur stampede. Visit the Australian Age of Dinosaurs, home to the world's largest collection of Australian dinosaur fossils.

MOUNT ISA

Discover the colourful characters and rich history of Mount Isa. Take in the history and sights that make up this iconic outback mining town, including the unique Underground Hospital and Beth Anderson Museum. Join in the fun and excitement of the Mount Isa Mines Rotary Rodeo, held annually during August.



Australian Age of Dinosaurs, Winton, Queensland



Australian Stockman's Hall of Fame, Queensland



Spirit of the Outback

SPIRIT OF THE OUTBACK RAIL JOURNEY

The perfect Outback Queensland experience begins onboard the Spirit of the Outback, a journey through remote towns and stunning landscapes between Brisbane and Longreach. Travel to the heart of the Outback and learn about the heritage and culture that shaped the nation.

From Brisbane or Longreach, the Spirit of the Outback travels through rugged terrain and spectacular scenery and the remote towns of Blackwater, Emerald and Barcaldine.

First Class guests have exclusive access to the Shearer's Rest Lounge, the perfect spot to relax with a cold drink, chat with fellow travellers and simply enjoy the passing scenery. The Tuckerbox Restaurant provides delicious and hearty outback-inspired meals for breakfast, lunch and dinner, prepared using some of Queensland's best produce.

Step aboard the Spirit of the Outback and watch the outback come to life.

FIRST CLASS SLEEPER

Enjoy the comfort of a private Sleeper with a seat by day, bed by night and a large panoramic window to take in the passing scenery.

- All-inclusive meals in the Tuckerbox Restaurant
- Single and Twin Sleeper options
- Fresh bed linen, towel and amenities pack
- Relax in the Shearer's Rest Lounge
- Entertainment Tablets available
- 240-volt power point, reading light, wash basin
- Luggage – two items checked-in and one item of carry-on luggage (refer to page 35 for weight and size limits)

ECONOMY SEAT

Relax in a comfortable Economy Seat as you travel to Longreach. You can purchase a selection of meals, light refreshments and beverages from the Shearer's Rest Galley.

- Two by two seating configuration
- Comfortable recline seat
- Fold down table, reading light, foot rest
- Overhead luggage racks
- Purchase meals and light refreshments from Shearer's Rest Galley
- Showers, toilets and drinking fountains available at the end of each carriage
- Luggage – one item checked-in and one item of carry-on luggage (refer to page 35 for weight and size limits)

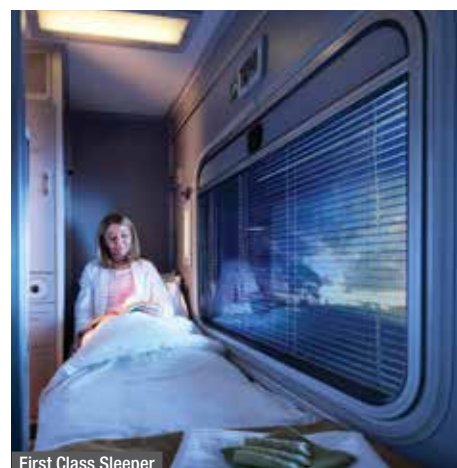
RAILBUS COACH CONNECTION

Enjoy the convenience of the RailBus Coach Connection to make getting to your holiday destination even easier.

The RailBus Coach Connection service provides a transfer from Longreach Railway Station to Winton, your gateway to the prehistoric dinosaurs at Lark Quarry.



First Class Sleeper



First Class Sleeper



RAIL FARES

BRISBANE TO LONGREACH

Adult Economy Seat	\$141*
Senior Economy Seat	\$118*
Adult First Class Sleeper	\$427*
Senior First Class Sleeper	\$359*

BUNDABERG TO LONGREACH

Adult Economy Seat	\$120*
Senior Economy Seat	\$100*
Adult First Class Sleeper	\$392*
Senior First Class Sleeper	\$334*

ROCKHAMPTON TO LONGREACH

Adult Economy Seat	\$87*
Senior Economy Seat	\$73*

TIMETABLE

BRISBANE TO LONGREACH

Distance:	1325 kms
Duration:	26 hrs

Brisbane to Longreach (overnight)

Departs Tue

Brisbane	6:10pm
Bundaberg	12:13am
Rockhampton	4:40am
Arrive Longreach	7:20pm

Brisbane to Longreach (overnight)

Departs Sat

Brisbane	1:55pm
Bundaberg	8:36pm
Rockhampton	1:03am
Arrive Longreach	3:40pm

Longreach to Brisbane (overnight)

Departs Mon, Thu

Longreach	10:00am
Rockhampton	1:17am
Bundaberg	5:26am
Arrive Brisbane	11:55am

Timetable is correct at time of printing and is subject to change without notice.



Shearer's Rest Lounge



RAILBUS COACH CONNECTION

LONGREACH TO WINTON

Departs Wed

Longreach	7:25pm
Arrive Winton	9:25pm

Departs Sun

Longreach	3:45pm
Arrive Winton	5:45pm

WINTON TO LONGREACH

Departs Mon, Thu

Winton	6:45am
Arrive Longreach	8:55am

OUTBACK RAIL FULLY ESCORTED RAIL TOUR

7 DAY FULLY ESCORTED RAIL TOUR

- ✓ 6 Breakfasts
- ✓ 4 Lunches
- ✓ 6 Dinners
- ✓ Guaranteed Departures+

Spirit of the Outback

ULTIMATE OUTBACK QUEENSLAND ADVENTURE 7 DAYS

Venture into the heart of Queensland's outback on our fully escorted Ultimate Outback Queensland Adventure. Your journey begins when you board the Spirit of the Outback and travel through the ever-changing scenery and rugged landscape between Brisbane and Longreach. Follow in the footsteps of the early pioneers and get ready for the holiday of a lifetime.

Explore Australia's rich heritage and gain genuine insights into pioneer life on this fabulous outback quest. Meet fascinating local characters who will captivate and charm you with their stories of life in the outback.

All the iconic outback experiences are covered on this trip of a lifetime! Visit the popular Australian Stockman's Hall of Fame and Qantas Founders Museum. Take a tour of a 747 and 707 jet. Cruise along the Thomson River at sunset and experience a Stockman's dinner around the campfire. Witness a shearer at work at the Outback Stockman's show and follow the dinosaur trail at Winton. Dine under the stars in true Outback style.

Our experienced tour guide will be with you every step of the way so you can relax and fully immerse yourself in this incredible outback adventure.

Day 1 Saturday: Spirit of the Outback – Brisbane to Longreach (D)

Be greeted by your tour leader at Roma Street Station, Brisbane prior to boarding the Spirit of the Outback. Spend time getting to know your tour leader and fellow travellers over a refreshment in the Shearers Rest as you venture into the heart of the rugged Queensland Outback. You'll be captivated by the vast landscapes and historic towns between Brisbane and Longreach on this fascinating journey. Overnight on board the Spirit of the Outback.

Day 2 Sunday: Longreach (BLD)

This morning the train passes through the open landscapes of Outback Queensland. Arrive into Longreach for the start of your Outback Queensland adventure. You will be met at the Longreach Railway Station by your Savannah Guides Operator driver and transferred to your accommodation in Longreach. End the day with a welcome dinner at the Birdcage Hotel. Stay the next five nights in Longreach.

Day 3 Monday: Longreach (BD)

Witness a 'totally different way of schooling' at the Longreach School of Distance Education. Visit the Qantas Founders Museum, eloquently telling the story of the founding of Qantas. View marvellous interpretive and interactive exhibits then join a guided Airpark Tour. In the late afternoon board the MV Explorer for the Drovers Sunset cruise on the Thomson River. Sit back and unwind on board with nibbles and drinks. After the cruise enjoy a two course table service dinner under the stars as you watch the entertaining Smithy's Outback Dinner and Show.

Day 4 Tuesday: Longreach (BLD)

This morning meet the owners of Strathmore Station on a tour of the property. Wander through their tranquil gardens and indulge in a delicious home baked morning tea at the homestead. Visit the Australian Stockman's Hall of Fame to discover the inspiring stories of the men, women and children of the pioneering era of Outback Queensland, then enjoy the Outback Stockman's Show with lunch. This afternoon transfer to Camden Park Station and tour through the historic homestead before sitting down to a barbecue dinner.

Day 5 Wednesday: Winton (BLD)

Today embark on a full day tour to Winton. Visit the Australian Age of Dinosaurs perched on the magnificent mesa overlooking the plains where it is said that dinosaurs once roamed. Be guided on an interpretive tour of the laboratory, collection room and the Dinosaur Canyon by dinosaur enthusiasts. Tour the main street of Winton and see the quirky Arnos wall and learn the story behind the unofficial national anthem at the Waltzing Matilda Centre. Return to Longreach late afternoon. Dinner tonight will be at the Harry's Restaurant at Longreach Motor Inn.

Day 6 Thursday: Ilfracombe (BLD)

Take a short drive to the nearby town of Ilfracombe for a town tour and lunch at the historic Wellshot Hotel. Learn about the iconic hat collection and the money on the roof. Enjoy free time in downtown Longreach before a farewell dinner at historic Rosebank Station Homestead.

Day 7 Friday: Longreach to Brisbane (B)

Transfer to Longreach Airport for your flight to Brisbane.

(B = breakfast, L = lunch, D = dinner)

OUTBACK RAIL FULLY ESCORTED RAIL TOUR



7 DAYS | BRISBANE TO BRISBANE

TRAVEL TYPE: Spirit of the Outback

DEPARTS: Jun 12 • Jul 10 • Sep 18 • Oct 9

Adult	From \$3669*[^] per person twin share
Senior	From \$3619*[^] per person twin share

HIGHLIGHTS

- Journey on the legendary Spirit of the Outback from Brisbane to Longreach
- Learn about the hat collection at the historic Wellshot Hotel
- Explore the iconic Australian Stockman's Hall of Fame
- Toast the sunset as you cruise along the majestic Thomson River
- Experienced tour guide for the duration of the tour

INCLUDES

- One way overnight travel on the Spirit of the Outback from Brisbane to Longreach – First Class Sleeper
- One way economy class airfare from Longreach to Brisbane
- Services of an experienced tour guide from day one to departure from Longreach Airport
- 5 nights 3½ star accommodation in Longreach
- Meals as specified
- Welcome dinner at the Birdcage Hotel
- Admission to Longreach School of Distance Education
- Qantas Founders Museum & guided Airpark Tour
- Drivers Sunset Cruise including Smithy's Outback Dinner and Show
- Strathmore Smoko Tour
- Admission to Australian Stockman's Hall of Fame & Outback Stockman's Show & Lunch
- Camden Park Station Sunset Dinner Tour
- Australian Age of Dinosaurs Laboratory, Collection Room and Dinosaur Canyon
- Half Day Winton Tour
- Admission to Waltzing Matilda Centre
- Ilfracombe Town Tour and Wellshot Hotel lunch
- Exclusive Rosebank Station Farewell dinner
- All coach transfers (excluding Brisbane arrival and departure transfers)

[^]Price valid 12 Jun – 9 Oct 21. Sole use price also available. ⁺Guaranteed departures based on minimum of 2 passengers.



Tuckerbox Restaurant, Spirit of the Outback



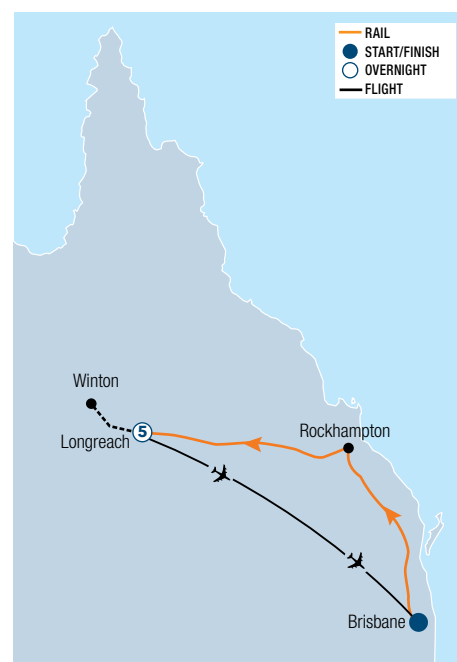
Qantas Founders Museum, Longreach, Queensland



Smithy's Outback Dinner and Show, Longreach, Queensland



Australian Age of Dinosaurs, Winton, Queensland



*Prices are a guide only, subject to change and availability and are in Australian Dollars. From prices for rail packages are per person per package twin share, unless otherwise specified and based on the lowest room category for travel in low season. For full terms and conditions including pricing, conditions and senior concession eligibility, refer to the Booking Conditions at the back of this brochure.

SPRIT OF THE OUTBACK HOLIDAY PACKAGES



Thomson River, Longreach, Queensland



Qantas Founders Museum, Longreach, Queensland



Carisbrooke Station, Winton, Queensland

OUTBACK ESCAPE 7 DAYS

Day 1: Spirit of the Outback – Brisbane to Longreach (D)

Depart on the Spirit of the Outback and be captivated as the landscape changes on this fascinating journey. Overnight on board the Spirit of the Outback.

Day 2: Longreach (BLD)

Arrive in Longreach, the heartland of Queensland's Outback. Meet your Savannah Guide Operator Driver and be transferred to your hotel. Tonight, join your guide for a dinner at the Birdcage Hotel. Stay the next four nights at Longreach Motor Inn.

Day 3: Longreach (BD)

Experience the warm hospitality of local graziers with a visit to Camden Park Station. Wander the Qantas Founders Museum and join a tour of the Airpark. Late afternoon, board the Longreach Explorer for the Drover's Sunset Cruise on the Thomson River. Unwind with onboard nibbles and drinks, watching a magnificent outback sunset. Enjoy a two-course table service dinner under the stars as you watch the entertaining Smithy's Outback Dinner and Show. Top off the evening with billy-tea and freshly baked damper.

Day 4: Longreach (BD)

Take a short drive west to Lily Lagoon and spend time exploring the lily-filled waterhole. Enjoy a traditional billy-tea before touring the nearby cattle sale yards. Visit the Australian Stockman's Hall of Fame and discover the world of the Aussie Stockman as you sit back and watch the Cinematic Experience. This afternoon, take a short drive to Ilfracombe and wander through the fascinating Machinery Mile and enjoy dinner at historic Wellshot Hotel. After dinner take in the Luminescent Longreach Sound and Light Show.

Day 5: Winton (BLD)

Marvel at the changing landscapes as you travel from Longreach to Winton. Visit the Australian Age of Dinosaurs perched on a magnificent mesa overlooking the plains where dinosaurs once roamed. Join a dinosaur enthusiast on an interpretive tour of the laboratory, collection room and Dinosaur Canyon.

Take a short town tour of Winton and view the quirky Arno's Wall, the Musical Fence before visiting the Waltzing Matilda Centre. After returning to Longreach, enjoy a delicious dinner at Harry's Restaurant at Longreach Motor Inn.

Day 6: Spirit of the Outback – Longreach to Brisbane (BLD)

Enjoy breakfast before departing Longreach on board the Spirit of the Outback. Share stories with your fellow travellers as you journey overnight on the Spirit of the Outback to Brisbane.

Day 7: Brisbane (B)

This morning breakfast is served on board before arriving in Brisbane, where your journey concludes.

(B = breakfast, L = lunch, D = dinner)

7 DAYS | BRISBANE TO BRISBANE

TRAVEL TYPE: Spirit of the Outback

DEPARTS: Apr 3, 10 • May 15, 29 • Jun 12, 26
• Jul 3, 24 • Aug 7, 21 • Sep 18 • Oct 2

Adult	From \$2985* [^] per person twin share
Senior	From \$2847* [^] per person twin share

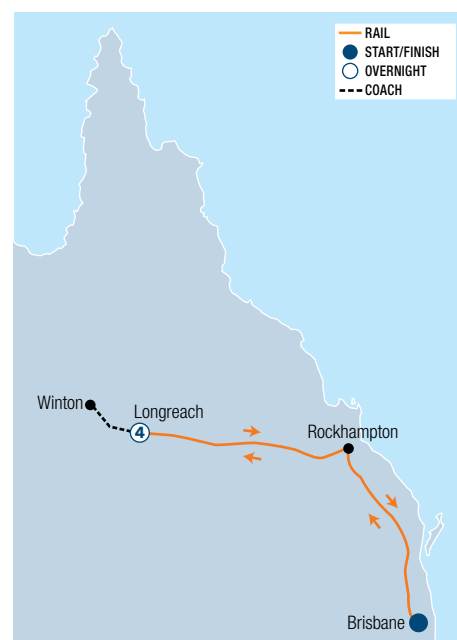
HIGHLIGHTS

- Experience country hospitality at the historic Wellshot Hotel in Ilfracombe
- Enjoy a guided Airpark Tour at the Qantas Founders Museum
- Discover Queensland's pioneering past at the Australian Stockman's Hall of Fame
- View the beauty of the Outback night sky as you dine on a Stockman's dinner
- Cruise along the mighty Thomson River

INCLUDES

- One way overnight travel on the Spirit of the Outback from Brisbane to Longreach – First Class Sleeper
- One way overnight travel on the Spirit of the Outback from Longreach to Brisbane – First Class Sleeper
- 4 nights 3½ star accommodation in Longreach
- Meals as specified
- Camden Park Station Smoko Tour
- Admission to Longreach School of Distance Education
- Admission to Qantas Founders Museum
- Guided Airpark Tour
- Drover's Sunset Cruise with Smithy's Outback Dinner & Show
- Lily Lagoon & Longreach Saleyards Tour
- Admission to Australian Stockman's Hall of Fame
- Outback Stockman's Show
- Historic Wellshot Hotel Dinner
- Winton Town Tour
- Admission to Australian Age of Dinosaurs
- Admission to Waltzing Matilda Centre
- Savannah Guides Operator driver/guide
- All coach transfers (excluding arrival and departure transfers)

[^]Prices valid 3 Apr – 2 Oct 21. Sole use prices also available.



SPRIT OF THE OUTBACK HOLIDAY PACKAGES



Australian Age of Dinosaurs, Winton, Queensland



Winton, Queensland



Carisbrooke Station, Winton, Queensland

WINTON ADVENTURE 7 DAYS

Day 1: Spirit of the Outback – Brisbane to Longreach (D)

Get to know your fellow travellers over a refreshment in the Shearer's Rest Lounge as you venture into the heart of the Queensland Outback. You'll be captivated by the ever-changing landscapes on your journey between Brisbane and Longreach. Overnight on board the Spirit of the Outback.

Day 2: Longreach to Winton (BLD)

Follow in the footsteps of the early pioneers as you travel through historic outback towns on your way to Longreach. Arrive into Longreach this afternoon and travel by coach to your accommodation in Winton. Enjoy dinner outback style at the Tattersall's Hotel. Stay the next four nights at the Winton Outback Motel.

Day 3: Winton (BL)

Journey through Winton's mesa country to the Dinosaur Stampede where 3300 dinosaur footprints were preserved 95 million years ago. Visit Carisbrooke Station and discover the hidden treasures of the Merton Gorge and Lookout. See the Three Sisters, fossick for opal and learn how this vast landscape came to be and how the pioneers lived off the land.

Day 4: Winton (BD)

Travel to Bladensburg National Park and visit the old homestead and shearing shed. Wander through the Australian Age of Dinosaurs with the largest collection of Australian dinosaur bones in the world.

Check out how the fossils are looked after in the Fossil Preparation Laboratory, then take a trip to Dinosaur Canyon, where you can walk through four exhibits with life-size dinosaur replicas. Hear the history of dinosaur discoveries and digs as you walk through

the canyon. Enjoy a memorable sunset from high up on a mesa with spectacular views over the surrounding landscape.

Day 5: Winton (B)

Today you have time to wander town at leisure and soak up the outback atmosphere. Spend time exploring the Waltzing Matilda Centre and learn about the history of Winton. Visit the Corfield and Fitzmaurice building which is a heritage listed building housing a wool industry display with history of the Shearers Strikes of the 1890's. There is a display about the opal mining industry centred on Opalton and an historic account of the Corfield and Fitzmaurice general merchants store.

This afternoon take a tour to Rangelands Station and walk through the Rangelands Rifts. Enjoy a glass of wine and nibbles at sunset.

Day 6: Spirit of the Outback – Longreach to Brisbane (BLD)

Enjoy breakfast before transferring by coach to Longreach for the return journey on board the Spirit of the Outback. Overnight on board the Spirit of the Outback.

Day 7: Brisbane (B)

Arrive in Brisbane where your tour concludes.

(B = breakfast, L = lunch, D = dinner)

7 DAYS | BRISBANE TO BRISBANE

TRAVEL TYPE: Spirit of the Outback

DEPARTS: Saturdays (11 Apr – 17 Sep, 25 Sep – 20 Nov 21)

Adult	From \$2115*[^] per person twin share
Senior	From \$1948*[^] per person twin share

HIGHLIGHTS

- See the Dinosaur Stampede at Lark Quarry Conservation Park
- Take in the natural beauty of Carisbrooke Station
- Tour the fossil preparation laboratory at the Australian Age of Dinosaurs
- Visit the old Homestead at Bladensburg National Park

INCLUDES

- One way overnight travel on the Spirit of the Outback from Brisbane to Longreach – First Class Sleeper
- One way overnight travel on the Spirit of the Outback from Longreach to Brisbane – First Class Sleeper
- 4 nights 4 star accommodation in Winton
- Meals as specified
- Australian Age of Dinosaurs Tour, including Dinosaur Canyon and the Collection Room
- Dinosaur Stampede at Lark Quarry Tour
- Bladensburg National Park Half Day Tour
- Rangelands Sunset Tour
- Winton Historic Town Tour
- Admission to Waltzing Matilda Centre
- Admission to the Royal Open Air Theatre
- Admission to the Corfield and Fitzmaurice Sheep and Wool display
- Return RailBus coach connection transfers from Longreach Railway Station to Winton
- Savannah Guides Enterprise and accredited guide
- All coach transfers (excluding arrival and departure transfers)

[^]Prices valid 11 Apr – 17 Sep, 25 Sep – 20 Nov 21.
Sole use prices also available.



*Prices are a guide only, subject to change and availability and are in Australian Dollars. From prices for rail packages are per person per package twin share, unless otherwise specified and based on the lowest room category for travel in low season. For full terms and conditions including pricing, conditions and senior concession eligibility, refer to the Booking Conditions at the back of this brochure.

SPRIT OF THE OUTBACK HOLIDAY PACKAGES



Starlight's Cruise Experience, Thomson River, Queensland



Cobb & Co Stage Coach Experience, Longreach, Queensland



Australian Stockman's Hall of Fame, Longreach, Queensland

EXPLORE OUTBACK LONGREACH & WINTON 8 DAYS

Day 1: Spirit of the Outback – Brisbane to Longreach (D)

Depart on this fascinating rail journey between Brisbane and Longreach and gain an insight into the history and culture of early Australia as you travel through the heritage towns of Blackwater, Emerald and Barcaldine. Overnight on board the Spirit of the Outback.

Day 2: Longreach (BL)

Enjoy a hearty breakfast in the Tuckerbox Restaurant as you make your way to the heart of the Queensland Outback, Longreach. Arrive in the afternoon and transfer to your accommodation. Stay the next five nights at Kinnon & Co's The Staging Post Accommodation, Longreach.

Day 3: Longreach (BD)

After breakfast, travel to historic Nogo Station and spend the morning exploring this working cattle and sheep station. Head to the shearing sheds and watch a champion sheep shearer at work before embarking on a Station Safari across the sunlit plains. See the ruins of Captain Starlight's stockyards and a re-creation of his camp by the billabong before enjoying a home-baked 'smoko' (morning tea). Transfer to the Qantas Founders Museum and join a guided tour of the 747 and 707 planes. Spend the afternoon relaxing at your accommodation before dinner at Ringers Restaurant, where you will be treated to a Stonegrill Dining Experience.

Day 4: Longreach (BLD)

Take your seat for a ride of your life at the only place in the world where you can experience what it's like to gallop in a Cobb & Co stagecoach. Enjoy morning tea before watching a classic Australian movie followed by the Harry Redford Old Time Tent Show. A Billy Can lunch is served during the show.

This afternoon you will have time to enjoy the main street of Longreach. Wander back to your accommodation at your leisure. Transfer to the Thomson River and board a historic paddlewheeler for a sunset cruise followed by a hearty stockman's dinner around the campfire with bush poetry and the authentic Starlight's Spectacular Sound-and-Light Picture Show.

Day 5: Winton (BLD)

Today travel west and spend the day exploring Winton. Visit the Australian Age of Dinosaurs Museum including the exciting new Dinosaur Canyon and the Collection Room.

Spend time at the Winton Opal Gems before enjoying lunch at the historic North Gregory Hotel. Visit the landmark Waltzing Matilda Centre before heading back to Longreach. Dine at Ringers Restaurant in the evening.

Day 6: Longreach (B)

Today visit the popular Australian Stockman's Hall of Fame. Spend time exploring the five galleries of the museum and marvel at the achievements of the early settlers.

Day 7: Spirit of the Outback – Longreach to Brisbane (BLD)

Enjoy breakfast before the return rail journey. Overnight on board the Spirit of the Outback.

Day 8: Brisbane (B)

Your holiday concludes after breakfast.

(B = breakfast, L = lunch, D = dinner)

8 DAYS | BRISBANE TO BRISBANE

TRAVEL TYPE: Spirit of the Outback

DEPARTS: Tuesdays (7 Apr – 26 Oct 21)

Adult	From \$2969* [^] per person twin share
Senior	From \$2774* [^] per person twin share

HIGHLIGHTS

- Take a stagecoach ride on the old Longreach to Wintonah mail route
- Board a paddlewheeler for a sunset cruise on the Thomson River
- Witness a shearer at work on historic Nogo Station
- Follow in the footsteps of dinosaurs as you walk through Dinosaur Canyon
- Be charmed by local bush theatre at The Harry Redford Old Time Tent Show
- Visit the iconic Australian Stockman's Hall of Fame

INCLUDES

- One way overnight travel on the Spirit of the Outback from Brisbane to Longreach – First Class Sleeper
- One way overnight travel on the Spirit of the Outback from Longreach to Brisbane – First Class Sleeper
- 5 nights 3 star accommodation in Longreach
- Meals as specified
- Nogo Station Experience
- Admission to Qantas Founders Museum and Jets Tour
- Cobb & Co Stagecoach Experience
- Starlight's Cruise Experience with 2 course campfire dinner
- Starlight's Spectacular Sound & Light Picture Show
- Australian Age of Dinosaurs Tour, including Dinosaur Canyon and the Collection Room
- Winton Town Tour
- Admission to Waltzing Matilda Centre
- Admission to Australian Stockman's Hall of Fame
- All coach transfers (excluding arrival and departure transfers)

[^]Prices valid 7 Apr – 26 Oct 21. Sole use prices also available.



SPirit OF THE OUTBACK Holiday Packages



Carisbrooke Station, Winton, Queensland



Thomson River, Longreach, Queensland



Camden Park Station, Longreach, Queensland

BEST OF LONGREACH & WINTON 8 DAYS

Day 1: Spirit of the Outback – Brisbane to Longreach (D)

This evening depart Brisbane on the Spirit of the Outback. Spend time getting to know your fellow travellers as you venture into the heart of the Queensland Outback. Overnight on board the Spirit of the Outback.

Day 2: Longreach (BLD)

Wake to a spectacular outback sunrise. Enjoy breakfast as you continue your journey into the outback. This evening arrive into Longreach and transfer to your accommodation.

The legendary town of Longreach is the perfect place to spend your first night surrounded by the history and heritage of the outback. Stay the next three nights at Saltbush Retreat, Longreach.

Day 3: Longreach (BLD)

Begin your day with the Strathmore Station tour for an insider's view into life on the land and to sample some delicious home-baked morning tea. Discover the inspiring stories of the men, women and children who pioneered Outback Queensland at the Australian Stockman's Hall of Fame. Sit back and be entertained by the story of a Stockman's adventure at the Outback Stockman's Show.

This afternoon experience the warm hospitality of local graziers on the Camden Park Station Sunset tour. Sit back and enjoy sunset drinks under the spectacular outback sky.

Day 4: Longreach (BLD)

Tour the Longreach School of Distance Education then visit historic Rosebank Station, settled as a sheep and cattle station some 100 years ago. Explore the Qantas Founders Museum and join the Jets Tour. Unwind on the Drover's Sunset Cruise with tasty on-board nibbles platters followed by a two-course table service dinner under the stars at Smithy's Outback Dinner and Show.

Day 5: Winton (BLD)

Travel west to Winton for a guided tour of the Waltzing Matilda Centre. Tour the Australian Age of Dinosaurs before a very special sunset barbecue overlooking the plains where the dinosaurs once roamed. Stay the next two nights at Boulder Opal Motor Inn, Winton.

Day 6: Winton (BLD)

Venture into the heart of Waltzing Matilda country and drive along private tracks to the beautiful Carisbrooke Station. Here we'll follow the scenic Cory's Range before driving to the Three Sisters rock formation to fossick for opals and enjoy a relaxed billy tea.

After, visit the Dinosaur Stampede, Lark Quarry Conservation Park and join an interpretive tour of the world's only recorded dinosaur stampede featuring over 3000 footprints frozen in time in ancient mudflats. Head back to Winton.

Day 7: Spirit of the Outback – Longreach to Brisbane (BLD)

Travel to Longreach for the return journey on board the Spirit of the Outback. Overnight on board the Spirit of the Outback.

Day 8: Brisbane (B)

Arrive in Brisbane where your tour concludes.

(B = breakfast, L = lunch, D = dinner)

8 DAYS | BRISBANE TO BRISBANE

TRAVEL TYPE: Spirit of the Outback

DEPARTS: Apr 13, 27 • May 4 • Jun 1, 15
Jul 6 • Aug 10, 24 • Sep 7, 21 • Oct 5

Adult	From \$3655* [^] per person twin share
Senior	From \$3517* [^] per person twin share

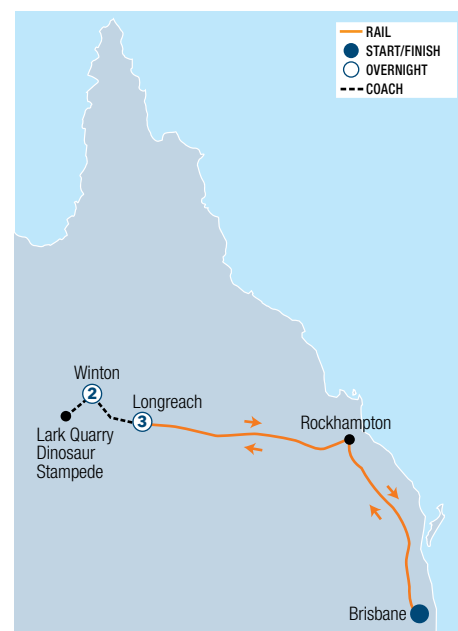
HIGHLIGHTS

- Explore the iconic Australian Stockman's Hall of Fame
- Enjoy sunset drinks at Camden Park Station
- Browse the Qantas Founders Museum to learn the history of Australian aviation
- Visit the Waltzing Matilda Centre and discover the secrets behind the song
- Step back 65 million years in time at the Australian Age of Dinosaurs

INCLUDES

- One way overnight travel on the Spirit of the Outback from Brisbane to Longreach – First Class Sleeper
- One way overnight travel on the Spirit of the Outback from Longreach to Brisbane – First Class Sleeper
- 3 nights 4 star accommodation in Longreach
- 2 nights 3½ star accommodation in Winton
- Meals as specified
- Strathmore Station Tour
- Admission to Australian Stockman's Hall of Fame
- Outback Stockman's Show
- Camden Park Station Sunset Tour
- Admission to Longreach School of Distance Education
- Rosebank Station Morning Tea
- Qantas Founders Museum Jets Tour
- Drover's Sunset Cruise with Smithy's Outback Dinner & Show
- Winton Town Tour
- Admission to Waltzing Matilda Centre
- Australian Age of Dinosaurs Tour including Dinosaur Canyon and Deluxe Sunset Barbecue
- Carisbrooke Station Tour
- Dinosaur Stampede National Monument at Lark Quarry Conservation Park
- Savannah Guides Operator driver and host
- All coach transfers (excluding arrival and departure transfers)

[^]Prices valid 13 Apr – 5 Oct 21. Sole use prices also available.



SPirit OF THE OUTBACK HOLIDAY PACKAGES



Big Red, Birdsville, Queensland



Birdsville Hotel, Queensland



Smithy's Outback Dinner & Show, Longreach, Queensland

BIRDSVILLE DESERT ADVENTURE 11 DAYS

Day 1: Spirit of the Outback – Brisbane to Longreach (D)

Get to know your fellow travellers over a refreshment in the Shearer's Rest as you venture into the heart of the Queensland Outback. Overnight on board the Spirit of the Outback.

Day 2: Longreach (BLD)

Arrive into Longreach this afternoon and transfer to your accommodation. Stay the next two nights at Albert Park Motor Inn, Longreach.

Day 3: Longreach (BLD)

Visit the Qantas Founders Museum and learn about the founding of Qantas through displays and interactive exhibits. Wander through the five themed galleries at the Australian Stockman's Hall of Fame. This afternoon relax on the Thomson River aboard the Drover's Sunset Cruise followed by a dinner under the stars at Smithy's Outback Dinner Show.

Day 4: Windorah (BLD)

Follow the mighty Thomson River floodplain to Windorah. Explore Welford National Park and enjoy a picnic lunch in the National Park beside one of the picturesque Coolibah-lined waterholes. Overnight at Windorah.

Day 5: Windorah to Birdsville (BLD)

Explore the JC Hotel Ruins, once part of the township site of Canterbury, before reaching the ghost town of Betoota and take in the spectacular views. See the Dreamtime Serpent Indigenous artwork before arriving in Birdsville. Stay the next two nights at Birdsville Hotel.

Day 6: Birdsville (BLD)

Stroll down to the banks of the tranquil Birdsville Billabong and see the Birdsville Racetrack. Tonight toast the sunset from Big Red. A 40 metre high sand dune marking the symbolic eastern edge of the Simpson Desert.

Day 7: Birdsville to Boulia (BLD)

En route to Boulia, take a close up look at the ancient Waddie Trees, visit the Carcory Ruins and see the nearby flowing Artesian Bore. You'll also explore the remote town of Bedourie and visit the historic Royal Hotel. Witness spectacular 360-degree views from the Vaughan Johnson Lookout. Overnight in Boulia.

Day 8: Boulia to Winton (BLD)

As the tour continues, stop in at Boulia's Min Min Encounter and explore the Stonehouse Museum. Discover the impressive Marine Reptile Fossil exhibit and historic Middleton Hotel. Stay the next two nights at Boulder Opal Motor Inn, Winton.

Day 9: Winton (BLD)

Spend time at the Waltzing Matilda Centre, the only museum dedicated to a song. Late afternoon, visit the Australian Age of Dinosaurs laboratory, for a guided tour of the laboratory, collection room and Dinosaur Canyon, followed by a memorable sunset barbecue dinner.

Day 10: Spirit of the Outback – Longreach to Brisbane (BLD)

Travel to Longreach for the return journey on board the Spirit of the Outback. Overnight on board the Spirit of the Outback.

Day 11: Brisbane (B)

Arrive into Brisbane where your tour concludes.

(B = breakfast, L = lunch, D = dinner)

11 DAYS | BRISBANE TO BRISBANE

TRAVEL TYPE: Spirit of the Outback

DEPARTS: Apr 13, 20 • May 11 • Jun 8
• Aug 17 • Sep 14, 28

Adult	From \$5105* [^] per person twin share
Senior	From \$4967* [^] per person twin share

HIGHLIGHTS

- Browse the Qantas Founders Museum to learn the history of Australian aviation
- Take in the bygone days at the Australian Stockman's Hall of Fame
- Stroll through Betoota Ghost Town
- Enjoy a sunset drink on top of Big Red
- Visit the iconic Birdsville Track
- Stop by Boulia's Min Min Encounter

INCLUDES

- One way overnight travel on the Spirit of the Outback from Brisbane to Longreach – First Class Sleeper
- One way overnight travel on the Spirit of the Outback from Longreach to Brisbane – First Class Sleeper
- 2 nights 3½ star accommodation in Longreach
- 1 night 3½ star accommodation in Windorah
- 2 nights 3½ star accommodation in Birdsville
- 1 night 3½ or 4 star accommodation in Boulia
- 2 nights 3½ star accommodation in Winton
- Meals as specified
- Admission to Qantas Founders Museum
- Admission to Australian Stockman's Hall of Fame
- Drover's Sunset Cruise
- Smithy's Outback Dinner & Show
- Wirrari Centre and Inland Hospital Ruins
- Min Min Light Encounter and Boulia Heritage Complex
- Admission to Waltzing Matilda Centre
- Australian Age of Dinosaurs Tour and sunset barbecue
- Travel by quality 4WD coach
- Savannah Guides Master Operator driver and host
- All coach transfers (excluding arrival and departure transfers)

[^]Prices valid 13 Apr – 28 Sep 21. Sole use prices also available.





Westlander

WESTLANDER RAIL JOURNEY

Discover the pioneering spirit of Queensland's rugged outback as you follow in the path of Queensland's famed explorers on board the Westlander.

Travel west from Brisbane to Toowoomba and across the Great Dividing Range, through the rich farmlands of the Darling Downs to Charleville. The 777 kilometre scenic journey travels through the outback towns of Chinchilla, Roma and Mitchell.

ECONOMY SEAT

- Complimentary in-seat snack-packs delivered at meal times
- Comfortable recline seat
- Fold down table, reading light, and foot rest
- Entertainment tablets available
- Overhead luggage racks
- Showers, toilets and drinking fountains



Arch Rock, Carnarvon Ranges, Queensland

ROMA EXPERIENCE 5 DAYS

Day 1: Brisbane to Roma Board the Westlander and journey overnight to Roma.

Day 2: Roma Arrive into Roma and make your own way to your accommodation. Spend the morning at leisure exploring this outback town. In the afternoon join the Big Rig by Day and Night tour. Stay the next two nights at Roma Central Motel.

Day 3: Roma (B) This morning, embark upon a half day, guided Roma Town tour and see the largest cattle sale yards in the Southern Hemisphere.

Day 4: Carnarvon Ranges (BL) Today, head to the Carnarvon Ranges for a full day guided tour. With exclusive access to a large privately owned cattle property nestled in the Carnarvon Ranges, this is a great introduction to Outback Queensland. Explore secluded gorges, amazing rock formations, unique Aboriginal rock art. In the evening, make your own way to Roma Station for your journey back to Brisbane aboard the Westlander.

Day 5: Brisbane Arrive into Brisbane where your tour concludes.

(B = breakfast, L = lunch)

Includes:

- Return travel on the Westlander from Brisbane to Roma – Economy Seat • 2 nights 4 star accommodation in Roma • Meals as specified • Half day Roma Town Tour • Big Rig by Day and Night Tour • Full day Discover Carnarvon Ranges Tour

Departs: Tuesdays (7 Apr – 13 Dec 21, 1 Feb – 31 Mar 22)

	Adult	Senior
Twin Share	\$819*	\$774*

RAIL FARES

BRISBANE TO ROMA (VICE VERSA)

Adult Economy Seat	\$65*
Senior Economy Seat	\$54*

BRISBANE TO CHARLEVILLE (VICE VERSA)

Adult Economy Seat	\$90*
Senior Economy Seat	\$75*

TIMETABLE

BRISBANE TO CHARLEVILLE

Distance:	777 kms
Duration:	17 hrs

Brisbane to Charleville (overnight)

Departs Tue, Thu

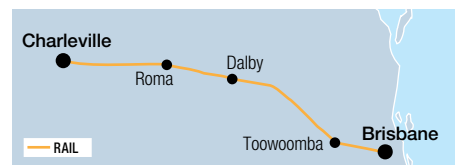
Brisbane	7:15pm
Roma	6:15am
Arrive Charleville	11:45am

Charleville to Brisbane (overnight)

Departs Wed, Fri

Charleville	6:15pm
Roma	11:35pm
Arrive Brisbane	11:25am

Timetable is correct at time of printing and is subject to change without notice. The RailBus Coach Connection provides a transfer from Charleville to Cunnamulla and Quilpie.



Cosmos Centre, Charleville, Queensland

CHARLEVILLE STARS & SECRETS 5 DAYS

Day 1: Brisbane to Charleville Board the Westlander this evening and journey to the outback town of Charleville.

Day 2: Charleville Arrive into Charleville and make your own way to your accommodation. Stay the next two nights at The Rocks Motel.

Day 3: Charleville (BL) Visit the Cosmos Observatory to view the sun through a specially designed solar telescope. Take a guided tour of the Cosmos Centre and learn about the solar system. After lunch, tour the remains of the WWII Top Secret USA Airfield. During the evening marvel at the clear night skies to where distant stars, galaxies and planets shine brightly.

Day 4: Charleville to Brisbane (B) Enjoy breakfast before the return rail journey. Overnight on board the Westlander.

Day 5: Brisbane Arrive into Brisbane where your tour concludes.

(B = breakfast, L = lunch)

Includes:

- Return travel on the Westlander from Brisbane to Charleville – Economy Seat
- 2 nights 4 star accommodation in Charleville
- Meals as specified
- Full day Outback Stars and Secrets Tour

Departs: Tuesdays (6 Apr – 27 Dec 21, 4 Jan – 31 Mar 22)

	Adult	Senior
Twin Share	\$605*	\$559*

*Prices are a guide only, subject to change and availability and are in Australian Dollars. From prices for rail packages are per person per package twin share, unless otherwise specified and based on the lowest room category for travel in low season. For full terms and conditions including pricing and conditions, refer to the Booking Conditions at the back of this brochure.

OUTBACK RAIL



Inlander

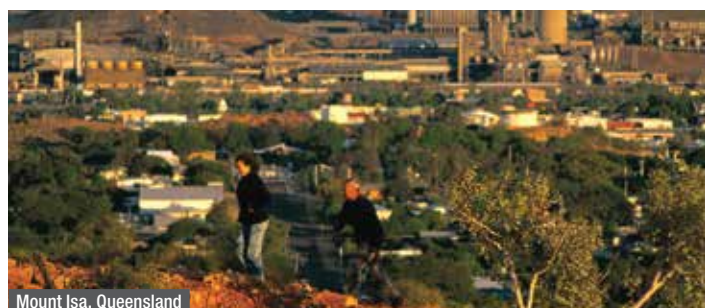
INLANDER RAIL JOURNEY

Experience the heritage and natural treasures of North Queensland's rugged yet beautiful country as you traverse the region on board the Inlander.

The 977 kilometre rail experience departs from the coastal town of Townsville and travels inland to the heart of Queensland mining country, Mount Isa. This historic journey takes you past Charters Towers over the Great Dividing Range and through the mining towns of Hughenden and Julia Creek.

ECONOMY SEAT

- Complimentary in-seat snack-packs delivered at meal times
- Comfortable recline seat
- Fold down table, reading light, and foot rest
- Entertainment tablets available
- Overhead luggage racks
- Showers, toilets and drinking fountains



Mount Isa, Queensland

MOUNT ISA DISCOVERY 6 DAYS

Day 1: Townsville to Mount Isa Journey overnight to Mount Isa on board the Inlander.

Day 2: Mount Isa Arrive into Mount Isa and transfer to your accommodation. Stay the next three nights at Ibis Styles Mt Isa Verona.

Day 3: Mount Isa (B) Today discover the past and present of Mount Isa with a visit to the Outback at Isa. Experience life as an underground miner on the Hard Times mine tour and explore the interactive mine museum. End your day with a breathtaking sunset over a desert lake.

Day 4: Mount Isa (B) Spend the day at leisure exploring the town of Mount Isa.

Day 5: Mount Isa to Townsville (B) Transfer to Mount Isa Railway Station for the Inlander journey back to Townsville.

Day 6: Townsville Arrive into Townsville late morning.

(B = breakfast)

Includes:

- Return travel on the Inlander from Townsville to Mount Isa – Economy Seat
- 3 nights 3 star accommodation in Mount Isa
- Meals as specified • Full day Mount Isa Discovery Tour
- Return coach transfer from Mount Isa Railway Station to accommodation

Departs: Wednesdays (7 Apr – 10 Aug, 16 Aug – 22 Sep 21)

	Adult	Senior
Twin Share	\$795*	\$759*

RAIL FARES

TOWNSVILLE TO MOUNT ISA (VICE VERSA)

Adult Economy Seat	\$108*
Senior Economy Seat	\$90*

TIMETABLE

TOWNSVILLE TO MOUNT ISA

Distance:	977 kms
Duration:	21 hrs

Townsville to Mount Isa (overnight)

Departs Wed, Sat

Townsville	12:40pm
Arrive Mount Isa	9:35am

Mount Isa to Townsville (overnight)

Departs Sun, Thu

Mount Isa	1:30pm
Arrive Townsville	10:10am

Timetable is correct at time of printing and is subject to change without notice.



Adels Grove, Queensland

LAWN HILL GORGE EXPERIENCE 7 DAYS

Day 1: Townsville to Mount Isa Journey overnight to Mount Isa on board the Inlander.

Day 2: Mount Isa Arrive into Mount Isa and transfer to your accommodation. Stay overnight at Ibis Styles Mt Isa Verona.

Days 3-4: Mount Isa to Adels Grove (BLD) Embark on a guided tour to Adels Grove, with interpretive sightseeing along the way. Experience a bush walk in Boodjamulla National Park and cruise through Lawn Hill Gorge. Stay the next two nights at Adels Grove.

Day 5: Mount Isa (BL) Stay overnight at Ibis Styles Mt Isa Verona.

Day 6: Mount Isa to Townsville (B) Make your own way to Mount Isa Railway Station for the Inlander journey back to Townsville.

Day 7: Townsville Arrive into Townsville late morning.

(B = breakfast, L = lunch, D = dinner)

Includes:

- Return travel on the Inlander from Townsville to Mount Isa – Economy Seat
- 2 nights 3 star accommodation in Mount Isa
- Meals as specified • 3 Day Adels Grove & Lawn Hill Gorge Tour
- One way coach transfer from Mount Isa Railway Station to accommodation

Departs: Saturdays (1 May – 7 Aug, 15 Aug – 25 Sep 21)

	Adult	Senior
Twin Share	\$2109*	\$2072*

* Prices are a guide only, subject to change and availability and are in Australian Dollars. From prices for rail packages are per person per package twin share, unless otherwise specified and based on the lowest room category for travel in low season. For full terms and conditions including pricing and conditions, refer to the Booking Conditions at the back of this brochure.

BOOKING CONDITIONS

Please read these Booking Conditions carefully as they apply to all bookings with Sunlover Holidays.

HOW TO BOOK

Contact your ATAS travel agent and request a reservation. All verbal quotes provided are an estimate only and subject to change until confirmed in writing.

PRICES & CONDITIONS

This brochure was produced on 21 January 2021. The prices in this brochure are valid for travel from 1 April 2021 to 31 March 2022, unless otherwise stated, are in Australian dollars and include GST where applicable. All prices are subject to availability, subject to change and can be withdrawn or varied without notice. Price changes may occur by reason of matters outside our control which increase the cost of the Product or Service. Such factors include (without limitation) adverse currency fluctuations, fuel surcharges, taxes and airfare increases. Surcharges and minimum stays may apply due to demand, Christmas and New Year's Eve, school and public holidays, special events and other circumstances. All prices are the lowest available prices at the time of print and are a guide only. Please check all prices, availability, fees, conditions and information with your travel agent before booking.

If we must change any part of your booking for reasons beyond our control, for example, an Accommodation Supplier overbooks accommodation, or if there is an increase in taxes or Supplier charges, we will notify you. If any such changes result in your holiday costing more or otherwise being materially different from that originally booked, you may cancel the booking and we will refund any monies already paid less any charges levied by Suppliers.

PRICES DO NOT INCLUDE

Anything not specifically indicated as being an inclusion.

CONCESSION RAIL FARES

Australian Pension Concession Card holders, Government Senior Card holders, Queensland Pension Concession Card holders and Queensland Government Senior Card holders may be entitled to Concession Fares. To qualify for Concession Fares, an Australian Concession Card must be presented at the time of booking; must be valid at the time of travel and must be carried at all times during travel.

Queensland residents who hold a current Queensland Pension Concession Card are entitled to four Queensland Pension rail entitlements each calendar year. These entitlements may be combined to provide two return Economy seat journeys or one Business seat return journey. Additional charges apply for Sleepers, RailBeds and meals. A non-refundable administration fee applies for every entitlement. This entitlement can be combined with all holiday packages available in this brochure. Please check with us or your travel agent when booking.

Not all sectors are included in arrangements for the funding of concessions. Funding for concessions may be withdrawn subsequent to the production of this brochure and any prices quoted may therefore change, without notice.

OMISSIONS & ERRORS

While every effort is made to ensure the accuracy and currency of the information in the brochures, errors or omissions may occur. All errors and omissions identified post the date of publication are notified to our retail partners to advise you. Please check with your agent for all up-to-date corrections, including prices and inclusions.

DEPOSITS & FINAL PAYMENTS

Deposit

You will be required to pay a deposit or deposits upon confirmation of your booking. Your travel agent will advise you of how much that will be. All deposits are non-refundable for changes of mind or cancellations by you (subject to your rights under the Australian Consumer Law).

Final Payment

Final payment of your holiday cost is required at least 30 days (125 days for Ultimate Outback Queensland Adventure Tour) prior to departure or by sale end date or by the payment deadline specified in individual package conditions, whichever is earlier. Some services, including airfares, may require full payment at the time of booking. For bookings made less than 31 days (125 days for Ultimate Outback Queensland Adventure Tour) prior to travel, full payment of holiday cost is required at the time your booking is confirmed.

Please ensure payments are made by the due dates. If this does not happen, our system will automatically cancel the booking without notice or liability to you.

Only upon payment of the full cost of your holiday do you have a final booking with the Supplier of the relevant good and/or service. In arranging your booking, Sunlover Holidays is acting as the agent of the Supplier of the relevant Product and at no time do you have a contract with Sunlover Holidays.

CREDIT & DEBIT CARD SURCHARGES

A fee will apply for payments made by debit and credit cards. Fees may vary depending on card type. Please check this fee with us or your travel agent when booking.

FEES

Amendment Fees

If you wish to change your booking prior to departure, an amendment fee of \$30 will be charged if the overall value of the booking remains the same or decreases, in addition to any fees imposed by the Supplier of each service booked.

Air Ticket Reissue Fees

If you wish to change your flight booking after the ticket has been issued, a reissue fee of \$22 per ticket will be charged, in addition to any fees imposed by the Airline.

Late Booking Fees

A fee of \$30 will be charged for all bookings made less than 7 days prior to travel.

All fees can be varied without notice.

CANCELLATIONS & REFUNDS

Prior to Final Payment

Your deposit is forfeited.

After Final Payment

There will be no refund of your deposit, in addition to any fees imposed by the Supplier, which may be up to 100% of monies paid.

After Travel

There will be no refund for cancellation once travel has commenced. There will be no refund for unused services, except for OPEN DATED services where the service was not booked with the Supplier. Requests for refunds received more than 6 months after departure date will not be accepted.

RESPONSIBILITY

Sunlover Holidays acts as an agent for the Suppliers (transport, tour, event or accommodation providers) who provide the various goods and/or services (Products). All bookings are subject to the terms and conditions and limitations of liability imposed by each Supplier. It is therefore important for you to obtain and read the applicable Supplier's terms and conditions as they may limit or exclude their liability to you.

In producing this brochure, we have used information provided by Suppliers. Irrespective of any measures taken by us to ensure the information contained in this brochure is accurate at the time of printing, Sunlover Holidays disclaims and will be exempt from liability in respect of anything misleading, false, incomplete or inaccurate and any errors, misdescription and all associated disappointment, loss, expense, damage, inconvenience, delay, death, shock, illness or injury, however caused.

Sunlover Holidays does not control the manner in which Products featured within this brochure are provided. Sunlover Holidays disclaims and will be exempt from liability for anything to do with the supply of such Products. This includes liability (whether as a matter of contract, tort, statute, restitution, or otherwise) for any direct, indirect or consequential loss, liability, claim, cost, expense, proceeding, demand, penalty, disappointment, death, injury, illness, shock, inconvenience or delay. This limitation of liability also applies irrespective of the cause, including negligence of us or a Supplier, withdrawal, cancellation or failure to provide a Product, delay, any variation in the Product, the provision of substitute Products or a change in the Supplier. Without limitation, Sunlover Holidays will not be responsible if the Product is not available due to inclement weather conditions or other acts of God, civil disturbances, fire, floods, acts of Government or any other authorities, accident to or failure of machinery or equipment or industrial action.

CONDITIONS OF CARRIAGE

Full Queensland Rail Travel terms and conditions may be obtained from Sunlover Holidays. By booking train travel through Sunlover Holidays you agree to be bound by Queensland Rail Travel's conditions of carriage.

MAPS & PHOTOGRAPHS

The maps in this brochure are intended as a guide only and are not to scale. They do not necessarily reflect actual routings or accommodation or attraction locations. Accommodation room photographs are representative only and actual rooms occupied may vary in decor and inclusions from those shown.

Some images in this brochure are supplied courtesy of hotels, tour operators, Queensland Rail, Tourism and Events Queensland, Tourism Tropical North Queensland, Outback Queensland Tourism, Tourism Whitsundays, Tourism Australia, Darren Jew, Erik Williamson Photography, Ezra Patchett, Peter Lik, Nathan White Images, Ray Miller, Paul Ewart, Aaron Spence, Reichlyn Aguilar, Rowan Bestmann, Brad Newton, Charlie Ferguson, Ian Beattie/Alamy Stock Photo, Tony Brown, Paul Beutel, Andrew Watson, Jesse and Belinda Lindemann, Garry Norris, Phill Gordon, Jules Ingall, Oliver Strewé, Caroline and Craig Makepeace, Phil Warren, Paul Maughan, Mark Clinton.

PRODUCT DESCRIPTIONS

Product descriptions and accommodation ratings featured in this brochure are provided by the individual Suppliers. Facilities, features or ratings are subject to change at any time. Tours may not operate on certain dates and durations and departure times are approximate only. You should check at the time of booking for any changes to published information of which we may be aware.

BONDS

Bonds or credit card imprints are required by most Suppliers at the time of check-in to cover incidentals and fees not included in your holiday cost.

AIRFARES

Airfares are not included unless otherwise specified. A number of airfares can be used in conjunction with your holiday package. All airfares are subject to availability and have special conditions. In most instances airfares must be paid in full at the time of booking and some may be non-refundable.

TRANSFERS & TOURS

Some Accommodation Suppliers provide courtesy transfers to/from the airport. It is essential that these transfers are pre-booked. Some Tour Suppliers provide complimentary pick up and return to your holiday accommodation and require a minimum number of passengers to operate. If minimum numbers are not achieved tours may be cancelled at short notice. Additionally, some Suppliers reserve the right to cancel departures for other reasons, including bad weather. Some tours and itineraries may also vary and attractions may be substituted due to seasonal conditions. Sunlover Holidays will not be held liable for a service variation, cancellation, delay or withdrawal, or a Supplier's failure to notify you. A full refund applies for the cancelled tour.

TRAVEL INSURANCE

We strongly recommend you take out appropriate travel insurance to cover your travel arrangements.

LUGGAGE

For Economy Seats a total of one item of checked-in luggage per person is allowed on the train (not exceeding 20kg and 180 linear cm). For Twin and Single First Class Sleepers, RailBeds and Business Seats a total of two items of checked-in luggage per person is allowed on the train (not exceeding 20kg and 180 linear cm per item).

An additional fee may apply to excess luggage (subject to approval). Checked-in luggage cannot be accessed during the journey, so you should bring a carry on bag containing everything needed for the journey.

In addition to the checked-in luggage allowances, one item of carry on luggage per person is allowed on the train (not exceeding 20kg). The maximum size for carry on luggage to fit under the seat or in the overhead luggage racks is 23cm x 34cm x 48cm per item.

It is recommended that customers check in larger luggage items (20 kg maximum) that they are unable to carry easily themselves. If staff assistance is needed with carry-on luggage please limit the weight to 7kg or less. Please check the Queensland Rail Travel website for more information.

PRIVACY

Sunlover Holidays collects information about you (including health information where necessary) to provide products and services to you, process your travel arrangements, facilitate your participation in loyalty programs and conduct marketing activities and market research. If the information is not provided, Sunlover Holidays may not be able to provide the Service requested. Sunlover Holidays may disclose your personal information to its related companies, carriers, travel service providers, organisations which provide services to Sunlover Holidays (more details are available in our Privacy Statement on our website sunloverholidays.com.au) and various law enforcement agencies, airports and governments around the world for security, customs and immigration purposes. You may gain access to the information Sunlover Holidays holds about you by contacting our Privacy Officer in writing at 179 Normanby Road, South Melbourne VIC 3205 Australia or on privacyofficer@sunloverholidays.com.au.

MONIES NOT HELD ON TRUST

All monies paid by you to us will be the property of Sunlover Holidays and will be a debt due and payable to the relevant Supplier (contingent on availing) once the services to which the money relates have been availed, or the relevant booking is cancelled (subject to cancellation fees). You agree and acknowledge that such monies will not be held by Sunlover Holidays on trust for or on behalf of you, and we may hold such monies in any account as we see fit, including with our own and/or other customer monies.

GOVERNING LAW

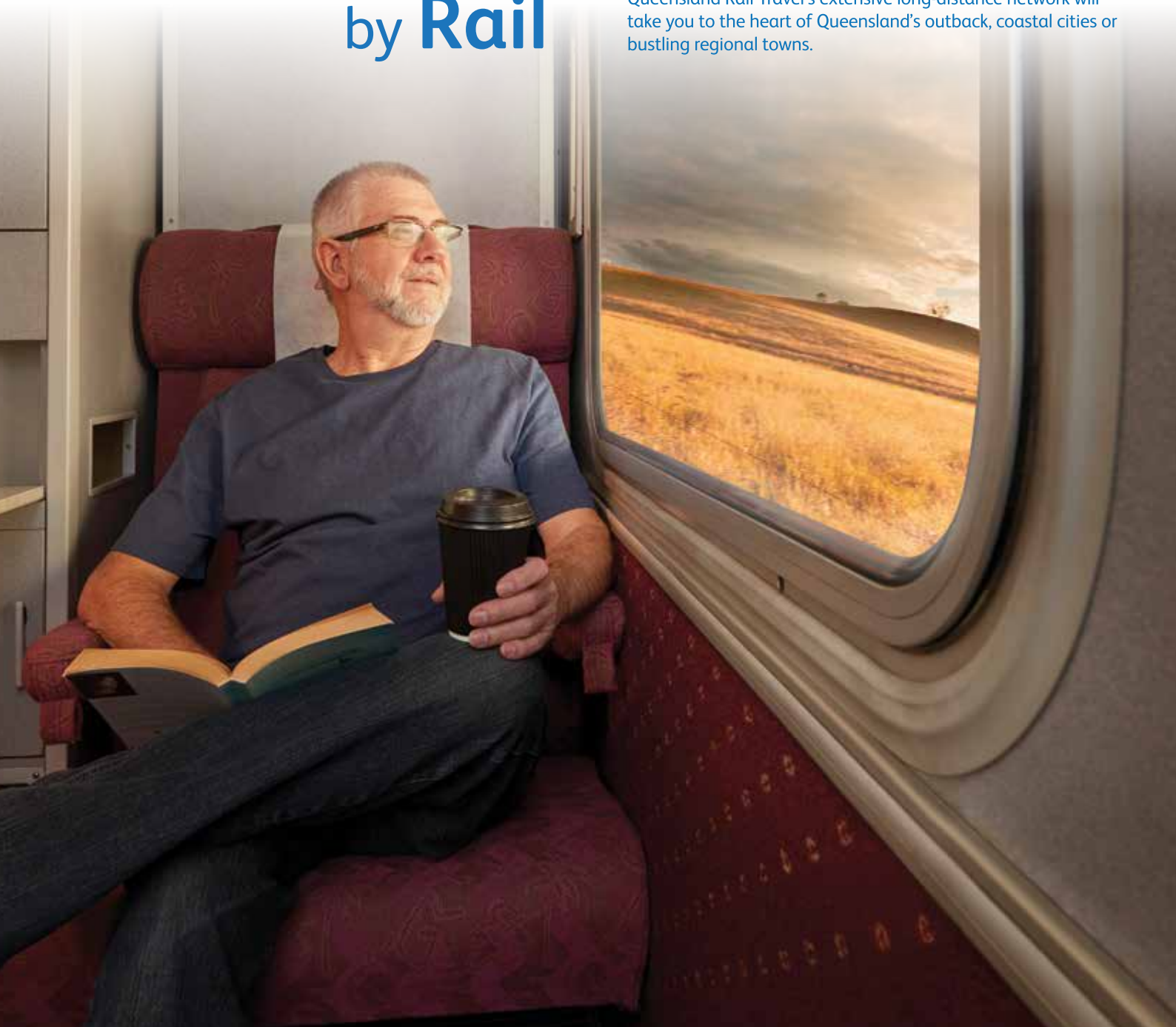
These conditions are governed by the laws of New South Wales, Australia and any action arising under them or in any way connected with a booking may be brought only in a court in New South Wales, Australia, subject to any law which is expressly inconsistent with this.

You acknowledge that you are 18 years of age or older and that you understand and agree with the above terms and conditions and our Privacy Policy. Please read our full booking terms and conditions at sunloverholidays.com.au/terms_conds.php.

Discover Queensland by Rail

For the first-time traveller or experienced train enthusiast, a train journey is the picture-perfect way to explore all that the great Sunshine State has to offer.

Queensland Rail Travel's extensive long-distance network will take you to the heart of Queensland's outback, coastal cities or bustling regional towns.



Click, call us or see your preferred Travel Agent. sunloverholidays.com.au ☎ 1300 738 833

YOUR SUNLOVER HOLIDAYS PREFERRED AGENT:

Travel Agent Bookings and Enquiries

Web: agents.sunloverholidays.com.au

Phone: 1300 738 830

Group Reservations 1300 738 838



WE'RE
PROUD TO BE
ATAS
travel accredited

sunlover HOLIDAYS